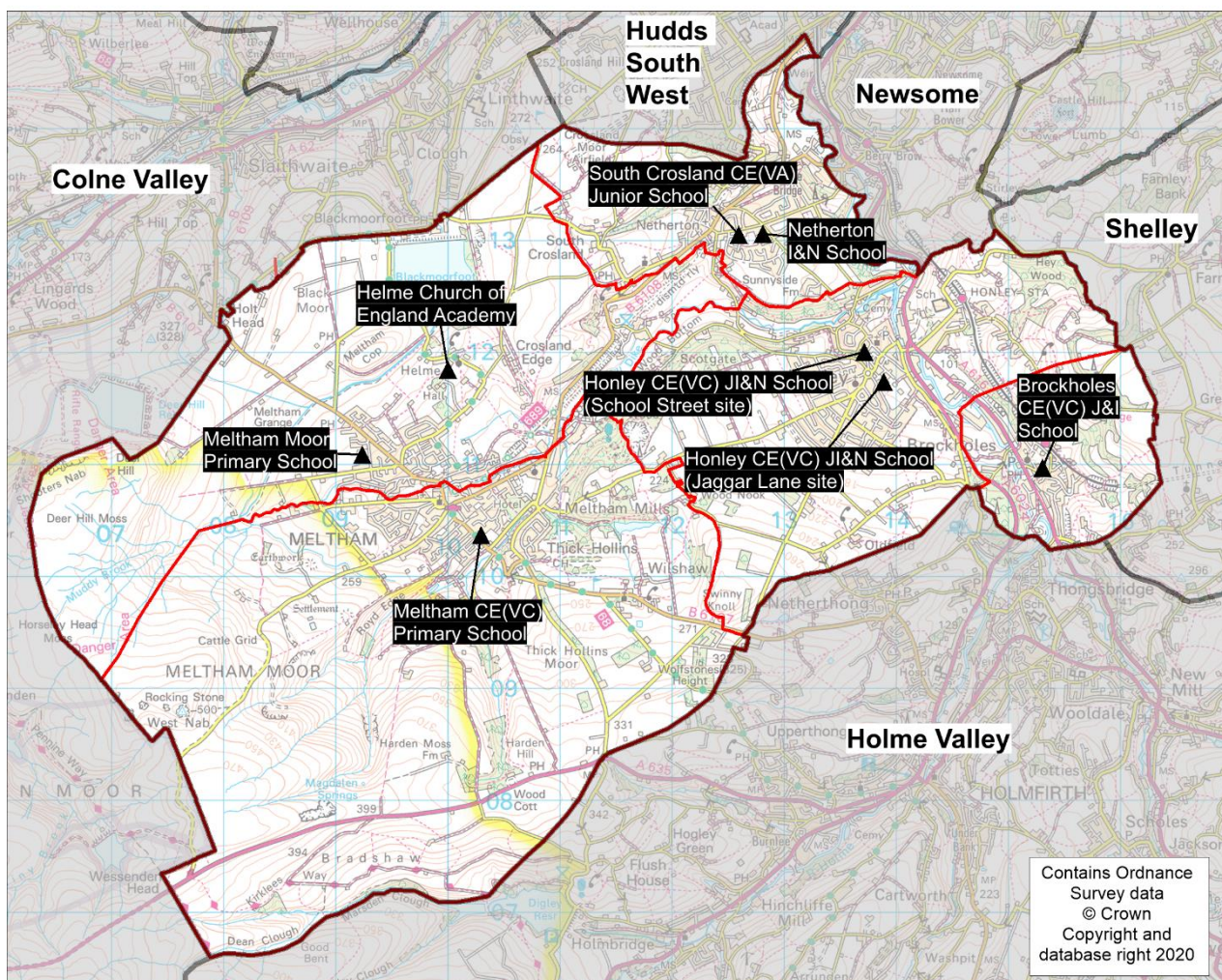


## Planning Area 13: Honley & Meltham




- ❖ Brockholes CE(VC) J & I School
- ❖ Helme Church of England Academy
- ❖ Honley CE(VC) Junior, Infant & Nursery School
- ❖ Meltham CE(VC) Primary School
- ❖ Meltham Moor Primary School
- ❖ Netherton I & N School
- ❖ South Crosland CE(VA) Junior School

**Overview:** The chart on page 125 (and Table B on page 126) suggests that the demand for Reception places from children resident in this planning is expected to decline slightly.

**In 2019/20** there were a number of unfilled Reception places.

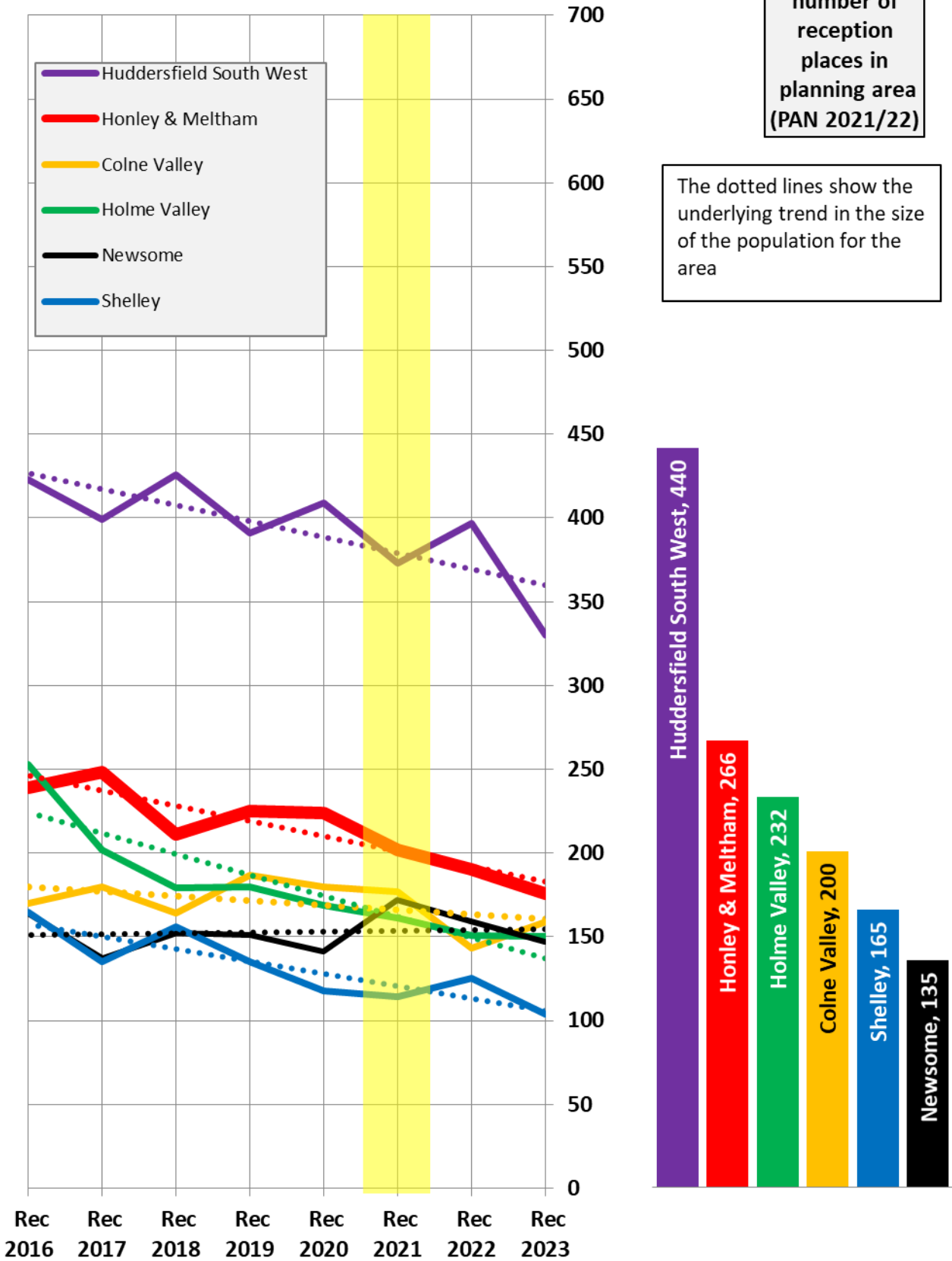
**In 2020/21** there were sufficient places available to meet basic need demand, with a number of unfilled Reception places available at national offer day. The pattern of pupil distribution illustrates that the vast majority of children (87%) living in the planning area attend schools in the area, with a number of pupils (13%) attending schools here from neighbouring planning areas.

**For 2021, 2022 and 2023** population data indicate a continuation of a previous declining trend in population. There is no need for establishing additional places. There are two sites, totalling approximately 150 dwellings, where house building has commenced and is expected to be completed by 2022.

Place planning summary for Planning Area 13. Honley & Meltham	
Place planning data for three cohorts of children: Reception, Y1 and Y2 From NHS Jan 2020 and School Census Jan 2020 <i>Note numbers in [square brackets] show the average number of children per year group</i>	
<b>698 [233] children live in this PA (NHS)</b> <ul style="list-style-type: none"> <li>• 610 [203] go to schools in <b>this</b> PA</li> <li>• 67 [22] go to schools in <b>other</b> Kirklees PAs</li> <li>• 21 [7] go to schools in <b>other LAs</b> or have <b>no school information available</b> (at 2020/21 national offer day none was allocated a reception place in another LA)</li> </ul>	<b>704 [235] children go to school in this PA (Census)</b> <ul style="list-style-type: none"> <li>• 610 [203] Live in <b>this</b> PA</li> <li>• 93 [31] Live in <b>other</b> PAs</li> <li>• 1 [0] Live <b>outside Kirklees</b></li> </ul>
Average number of places used per year group Number of Reception places available (PAN 2021/22) Trend in number of children living in this PA per year group	233 266 <b>decline</b> 
Place planning strategy (assuming current patterns of migration, housing occupancy, parental preference etc) <ul style="list-style-type: none"> <li>• Based on population data the projected need for places is <b>below</b> the capacity of available places</li> <li>• On balance, more children travel <b>IN</b> to schools in the PA from neighbouring PAs</li> <li>• No need for additional places</li> </ul>	

**Planning Area 13. Honley and Meltham**  
**Chart showing pupil population trends and available school places**

**population trends in neighbouring planning areas**  
**Reception 2016 to Reception 2023 (NHS)**



**number of reception places in planning area (PAN 2021/22)**

The dotted lines show the underlying trend in the size of the population for the area

The chart above shows the size of each year group in the child population in the planning area and the neighbouring planning areas for Reception cohorts Sep 2016 to Sep 2023. The dotted line shows the underlying trend in the size of the pupil population for each area.

The bar chart shows the number of Reception class places available in each planning area, based on the Published Admission Numbers (PANs) of the schools in the area. The yellow shading highlights the data for Reception classes in September 2021.

Planning Area 13. Honley and Meltham																
Table A. Number on roll - pupil census January 2020																
School Name	PAN 2021/22		Nursery					Primary							Total Pupils	
	KS1	KS2	< 2 PT	2+ PT	3+ PT	4+ PT	FT	4+ PT	4+ FT	5+	6+	7+	8+	9+		10+
Brockholes CE(C) J & I School	30	30	0	0	0	0	0	0	30	28	30	31	29	29	30	207
Helme Church of England Academy	20	20	0	0	0	0	0	0	11	13	17	15	16	18	16	106
Honley CE (VC) J I & N School	66	68	0	0	0	0	0	0	48	57	63	71	66	55	61	421
Meltham C.E. (VC) Primary School	60	60	0	0	0	0	0	0	59	59	59	56	59	58	60	410
Meltham Moor Primary School	30	30	0	5	22	0	0	0	23	26	30	31	29	26	27	219
Netherton Infant and Nursery School	60		0	1	25	0	5	2	56	38	53	1	0	0	0	181
South Crosland CE (A) Junior School		60	0	0	0	0	0	0	0	0	0	59	60	56	60	235
	266	268	0	6	47	0	5	2	227	221	252	264	259	242	254	

Planning Area 13. Honley and Meltham															
Table B. Number of pupils in each year cohort resident in the planning area - school year 2019-20 - (NHS Jan 2020)															
future reception year groups				infant 2019/20			junior 2019/20				secondary 2019/20				
Reception Sep 2023	Reception Sep 2022	Reception Sep 2021	Reception Sep 2020	Early years/KS1			Key Stage 2				Key Stage 3			KS4	
				Reception 2019/20	Year 1	Year 2	Year 3	Year 4	Year 5	Year 6	Year 7	Year 8	Year 9	Year 10	Year 11
176	190	202	224	225	211	248	239	242	238	241	256	243	280	215	274

Planning Area 13. Honley & Meltham Table C. Where do children living in the Honley & Meltham planning area go to school? Reception - Year 6 (Jan 2020) School Attended	PAA of Residence						
	Brockholes CE (VC) J & I School	Honley CE (VC) J, I & N School	Meltham CE (VC) Primary School	Meltham Moor Primary School	Netherthorpe I & N School	New Mill Infant School / New Mill Junior School	Grand Total
Beaumont Primary Academy					1		1
Berry Brow Infants and Nursery School		1					1
Birdsedge First School				1			1
Brockholes CE(C) J & I School	106	36		3	2	1	148
Clough Head Junior & Infant School			4				4
Dalton School J I N		2	1				3
Farnley Tyas C E (C) First School	1	1	1				3
Grange Moor Primary School	1						1
Hade Edge Junior and Infant School		1					1
Helme Church of England Academy		2	14	52	5		73
Hillside Primary School		1					1
Hinchliffe Mill Junior & Infant School		1	3				4
Holme J & I School			5	1			6
Holmfirth Junior Infant & Nursery School	5		1	7			13
Honley CE (VC) J I & N School	5	353	6	7	9		380
Kirkburton Middle School	1	1					2
Lepton CE(C) JIN School		1					1
Linthwaite Ardrone Church of England (Voluntary Aided) Junior & Infant School		1	4	1			6
Linthwaite Clough J I & Early Years Unit		1		4	2		7
Lowerhouses C. E. (VC) J. I. & EY School					1		1
Marsden I & N School				2			2
Marsden Junior School			1	4			5
Meltham C.E. (VC) Primary School		11	260	119	1		391
Meltham Moor Primary School	1		18	159	2		180
Mount Pleasant Primary School					1		1
Netherthorpe Primary School	1	15	17	7			40
Netherthorpe Infant and Nursery School		4		5	94		103
New Mill Infant School	3	2					5
Newsome Junior School		3			6		9
Nields Junior Infant & Nursery School			3	1			4
Netherhall Learning Campus Junior School				1			1
Luck Lane, A SHARE Primary Academy			2				2
Scholes (Holmfirth) J & I School	1						1
Shepley First School		1					1
Skelmanthorpe Academy					3		3
Slaithwaite CE (VC) J&I School				3			3
South Crosland CE (A) Junior School	1	8	2	3	143		157
St Joseph's Catholic Primary School (Huddersfield)				1			1
Thurstonland Endowed (VC) First School	3	2					5
Upperthorpe J & I School	3		9	4			16
Wellhouse J & I School			1	1			2
New Mill Junior School	6	2		2			10
<b>Grand Total</b>	<b>138</b>	<b>450</b>	<b>352</b>	<b>388</b>	<b>270</b>	<b>1</b>	<b>1,599</b>

Planning Area 13. Honley & Meltham Table D. Where do children attending school in Honley & Meltham live? Reception - Year 6 (Jan 2020) PAA of Residence	School Attended							
	Brockholes CE(C) J & I School	Helme Church of England Academy	Honley CE (VC) J I & N School	Meltham C.E. (VC) Primary School	Meltham Moor Primary School	Netherthorpe Infant and Nursery School	South Crosland CE (A) Junior School	Grand Total
All Hallows' CE VA Primary School / Hill View Academy	4		2					6
Hill View Academy			2					2
Beaumont Primary Academy / Oak CE Primary School	1	13	4	4		26	39	87
Berry Brow I & N School / Newsome Junior School	3		11			5	6	25
Birkby I & N School / Birkby Junior School			2		1			3
Brockholes CE (VC) J & I School	106		5		1		1	113
Christ Church CE Academy				1				1
Woodside Green, A SHARE Primary Academy	2				2		1	5
Crow Lane Primary and Foundation Stage School		1						1
Dalton School J I N	1						1	2
Golcar J I & N School	1		1					2
Hepworth J & I School	1							1
Hillside Primary School	4		1	1		5	6	17
Hinchliffe Mill J & I School	1		1					2
Holmfirth J I & N School		1		2	1		1	5
Honley CE (VC) J, I & N School	36	2	353	11		4	8	414
Kirkheaton Primary School			2					2
Lindley CE Infant School / Lindley Junior School				1				1
Linthwaite Clough J I & EY School		7	1	1		1	1	11
Lowerhouses CE (VC) J, I & EY School							1	1
Marsden I & N School / Marsden Junior School		4		1	3		2	10
Meltham CE (VC) Primary School		14	6	260	18		2	300
Meltham Moor Primary School	3	52	7	119	159	5	3	348
Mount Pleasant Primary School						8	15	23
Netherthong Primary School	3		5	2				10
Netherthorpe I & N School	2	5	9	1	2	94	143	256
New Mill Infant School / New Mill Junior School	31		7	2		1	1	42
Nields J I & N School		4		2				6
Paddock J I & N School		1						1
Netherhall St James (VC) C of E Infant and Nursery School / Netherhall Learning Campus Junior School							1	1
Reinwood I & N School / Reinwood Community Junior School				1				1
Scholes (Holmfirth) J & I School	2	1			3		2	8
Shepley First School	1							1
Slaithwaite CE (VC) J & I School		1			1		1	3
Spring Grove J I & N School			1					1
Thurstonland Endowed (VC) First School	1							1
Upperthong J & I School	2		1					3
Wellhouse J & I School				1		1		2
<b>Grand Total</b>	<b>205</b>	<b>106</b>	<b>421</b>	<b>410</b>	<b>191</b>	<b>150</b>	<b>235</b>	<b>1,718</b>