

To be read in conjunction with
Accepted Options Policies Map

Green Belt and Green Infrastructure

- Peak District National Park
- Green Belt
- Strategic Green Infrastructure Proposal (SGI)
- Urban Green Space (UGS)
- Local Green Space (LocGS)

Housing, Employment & Other Significant Development

- Employment (E)
- Housing (H)
- Mixed Use (MX)
- Land at Storches Hall (MDGB)
- Gypsies And Travellers & Travelling Showpeople (GTTs)

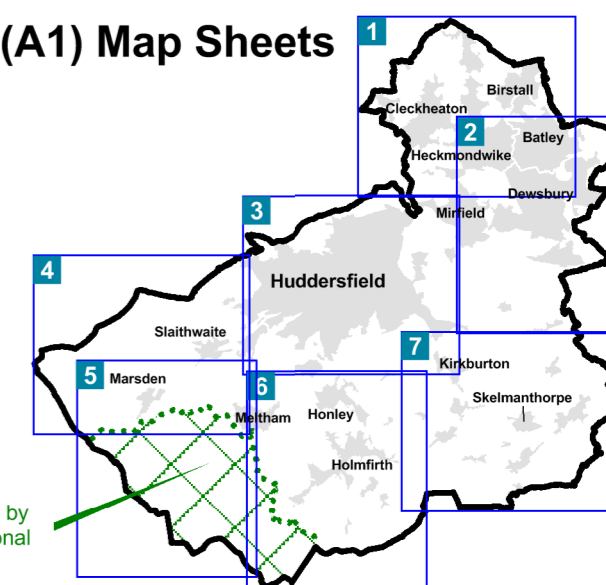
Minerals & Waste

- Mineral Extraction Site (ME)

Additional Rejected Options

- Local Wildlife Site (LWS)
- Safeguarded Land (SL)

Index to (A1) Map Sheets



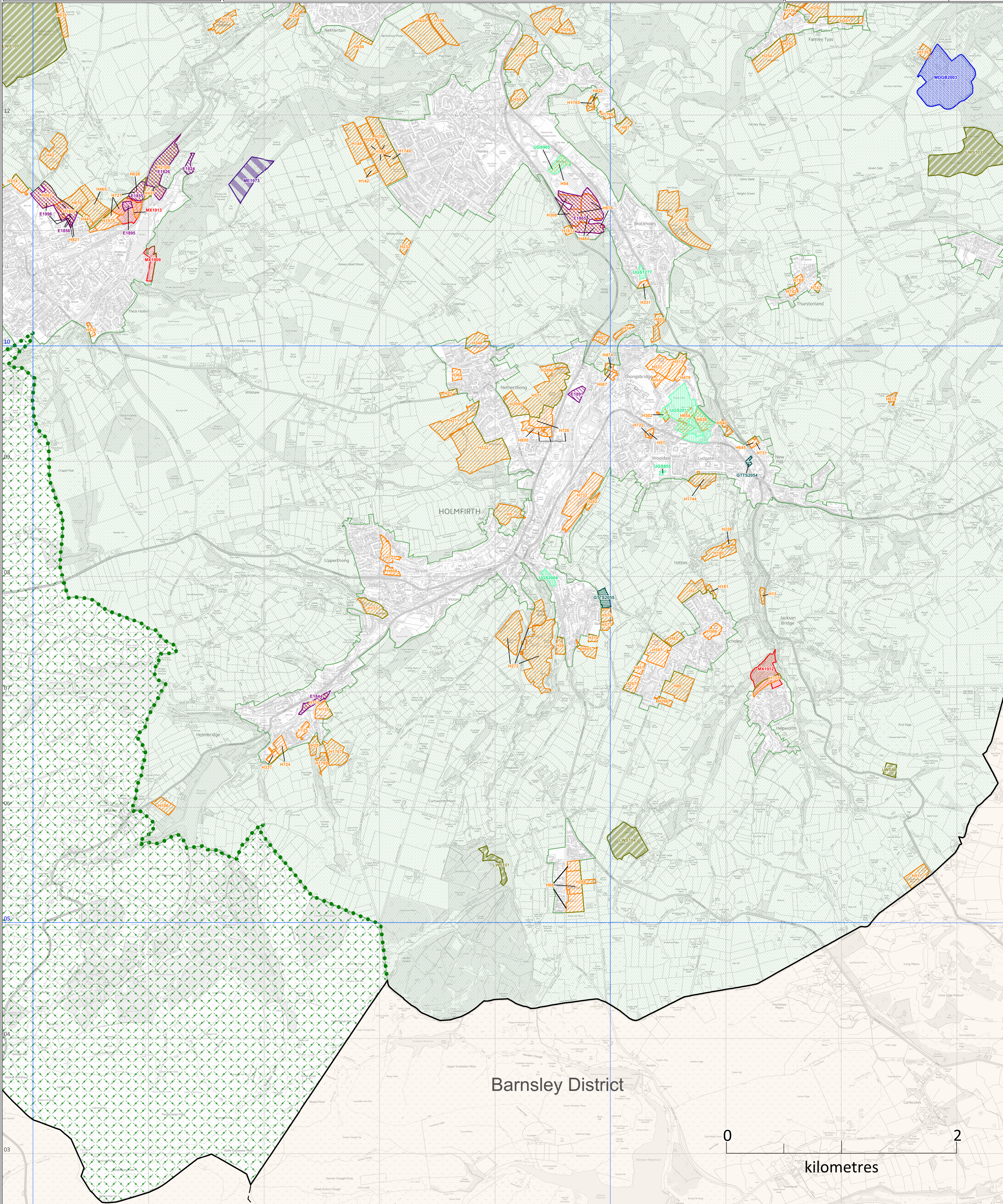
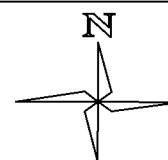
Area administered by
Peak District National
Park Authority

Please note:

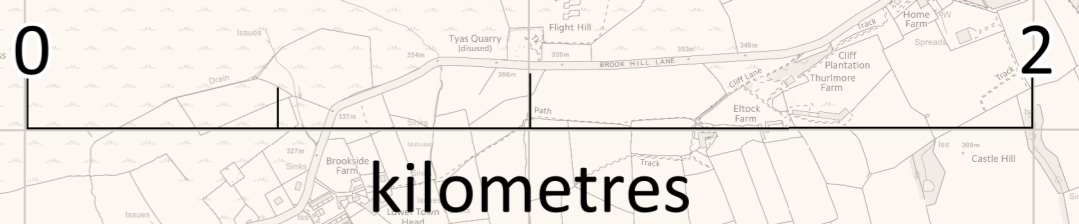
- (i) Only sites of 0.4 ha and over are shown. Site references relate to allocations and policies in: Draft Local Plan - Allocations and Designations and Draft Local Plan - Strategy and Policies
- (ii) A number of the rejected-site options shown on this map overlap. Not all such overlaps have been comprehensively labelled here and the interpretation of actual site boundaries can, therefore, be problematic. Where interpretation of site boundaries proves difficult, further details can be found online - www.kirklees.gov.uk/localplan

Map scale: 1:15,000 @ A1

© Crown Copyright and database
right 2015. Ordnance Survey 100019241



Barnsley District



kilometres