

Kirklees (West)

Policies Map (Rejected Options)
Publication Draft Local Plan - November 2016

To be read in conjunction with
Accepted Options Policies Map

Green Belt and Green Infrastructure

- Peak District National Park. Not rejected
- Green Belt. Not rejected. Shown for context only.
- Strategic Green Infrastructure Proposal (SGI)
- Urban Green Space (UGS)
- Remove Urban Greenspace (RUGS)
- Local Green Space (LocGS)
- Add to Green Belt (AGB)
- Remove from Green Belt (RGB)

Housing, Employment & Other Significant Development

- Employment (E)
- Priority Employment Areas (PEA)
- Housing (H)
- Mixed Use (MX)
- Land at Storthes Hall (MDGB)
- Gypsies And Travellers & Travelling Showpeople (GTTs)

Minerals & Waste

- Minerals Areas of Search (ME)
- Minerals Extraction Site (ME)
- Minerals Preferred Areas (ME)

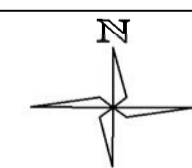
Additional Rejected Options

- Local Wildlife Site (LWS)
- Safeguarded Land (SL)
- Transport Scheme (TS)

Please note:

(i) Only sites of 0.4 ha and over are shown.
Site references relate to allocations and policies in: Draft Local Plan - Allocations and Designations and Draft Local Plan - Strategy and Policies

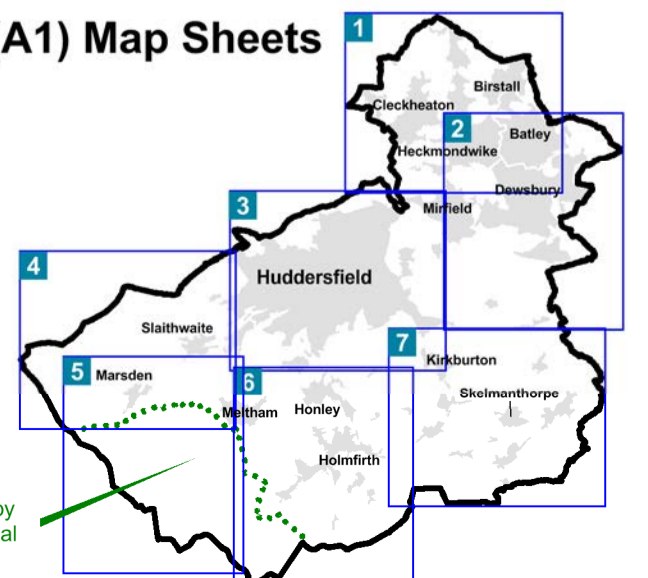
(ii) A number of the rejected-site options shown on this map overlap. Not all such overlaps have been comprehensively labelled here and the interpretation of actual site boundaries can, therefore, be problematic. Where interpretation of site boundaries proves difficult, further details can be found online - www.kirklees.gov.uk/localplan



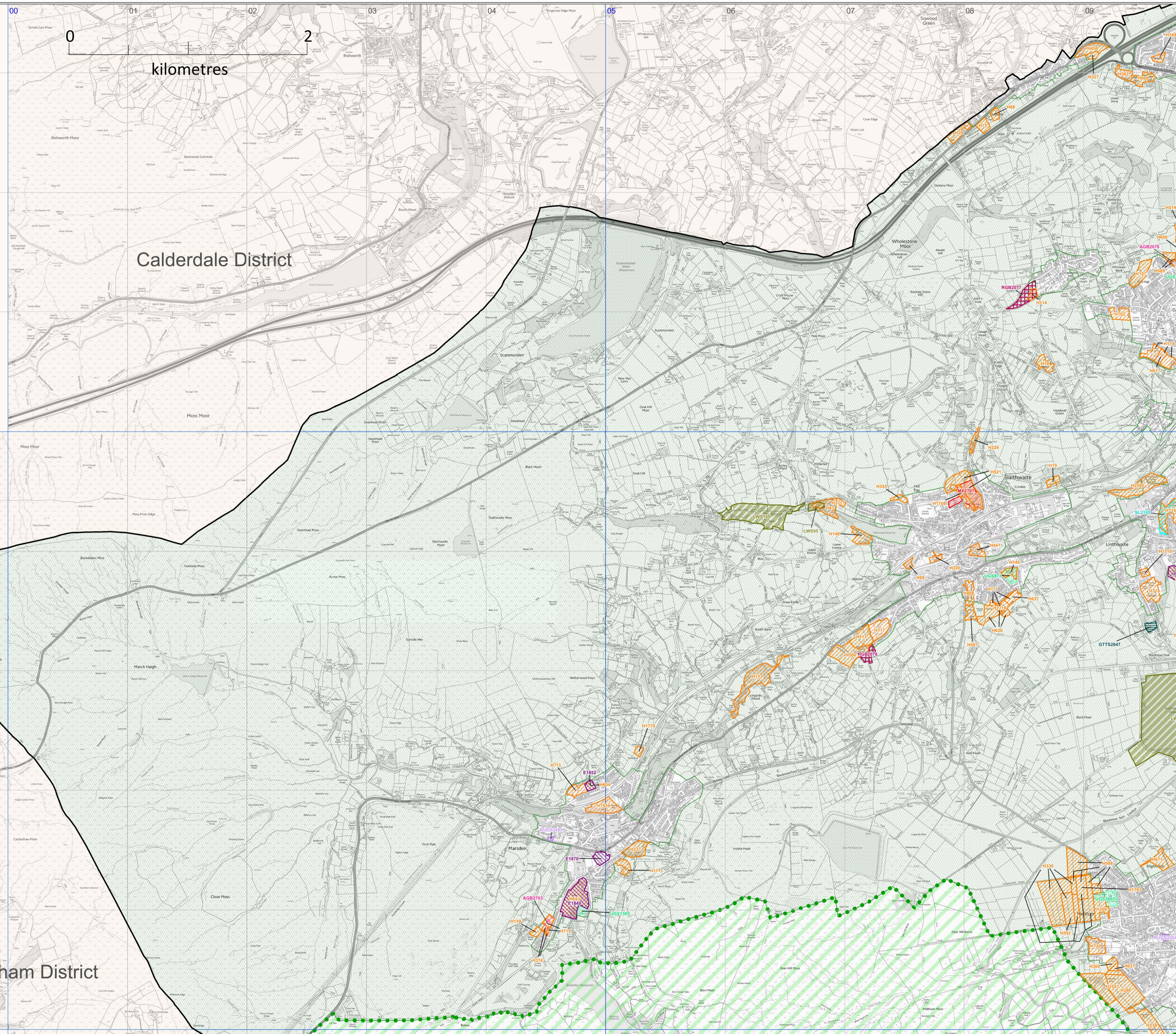
Map scale: 1:15,000 @ A1

© Crown Copyright and database right 2016. Ordnance Survey 100019241

Index to (A1) Map Sheets



Area administered by
Peak District National
Park Authority



Calderdale District

Oldham District

kilometres

