

Kirklees (West)

Policies Map (Accepted Options)  
Draft Local Plan - November 2015

Green Belt and Green Infrastructure

- Peak District National Park
- Green Belt
- Strategic Green Infrastructure Proposal (SGI)
- Urban Green Space (UGS)
- Local Green Space (LocGS)

Housing, Employment & Other Significant Development

- Employment (E)
- Priority Employment Areas (B&S, D&M, HUD, KR)
- Housing (H)
- Mixed Use (MX)
- Land at Storthes Hall (MDGB)
- Gypsies And Travellers & Travelling Showpeople (GTTS)

Additional Accepted Options

- Safeguarded Land (SL)

Heritage Assets

- Archaeological Sites (Class 2) (AS)
- Conservation Area
- Registered Battlefield (RB)
- Registered Parks and Gardens (RPG)
- Scheduled Monuments (SM)

Minerals & Waste

- Mineral Extraction Site (ME)
- Waste Site (W)
- Waste Site (Safeguarded) (WS)

Natural Environment

- Special Protection Area
- Special Area of Conservation
- Site of Special Scientific Interest
- Local Wildlife Sites (LWS)
- Local Geological Sites (LGS)

Shopping Centres

- Principal Town Centre
- Town Centre
- District Centre
- Local Centre

Transport

- Highways England Transport Scheme

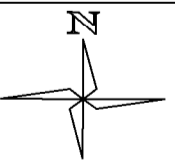
Core Walking, Cycling and Riding Network

- Existing
- Proposed
- Indicative

Transport Scheme (TS)

- Improvement to transport junction
- Committed transport improvement scheme
- Dewsbury Area Integrated Transport Improvement Strategy

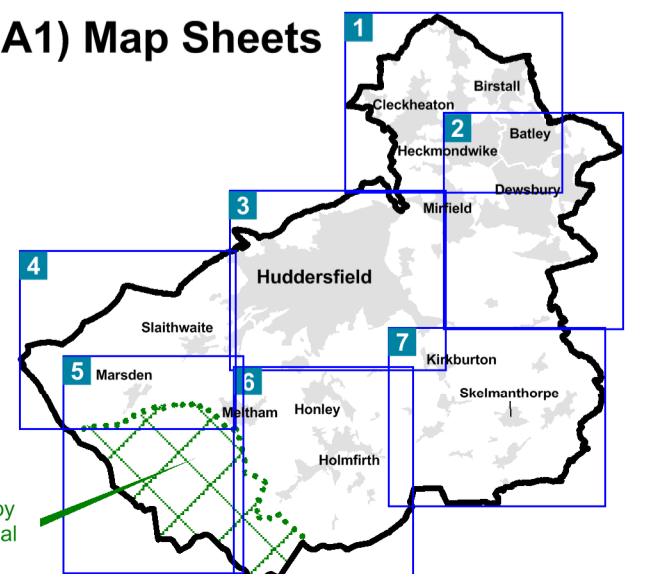
\* Only sites of 0.4 ha and over are shown.  
Site references relate to allocations and policies in: Draft Local Plan  
- Allocations and Designations and Draft Local Plan - Strategy and Policies



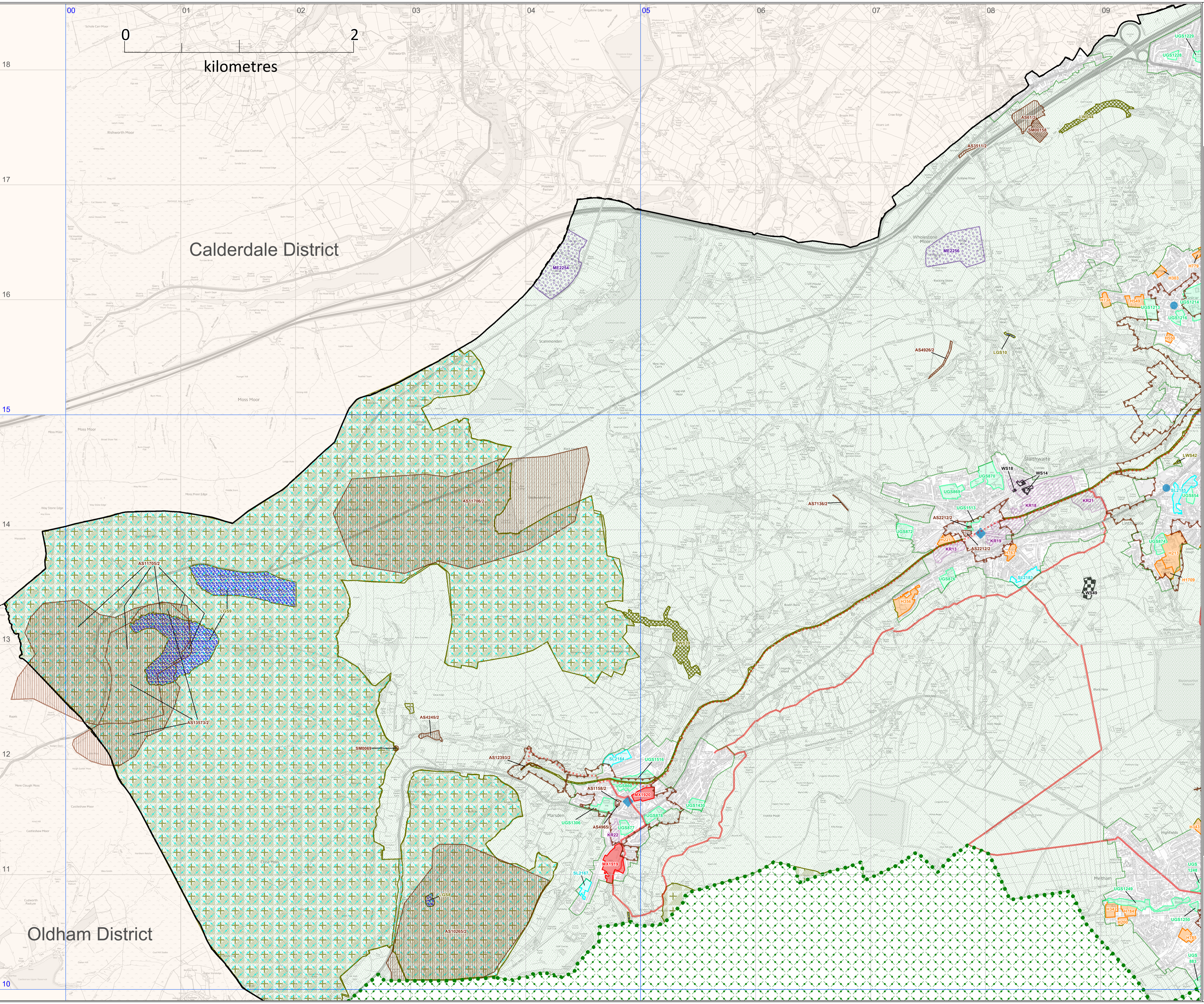
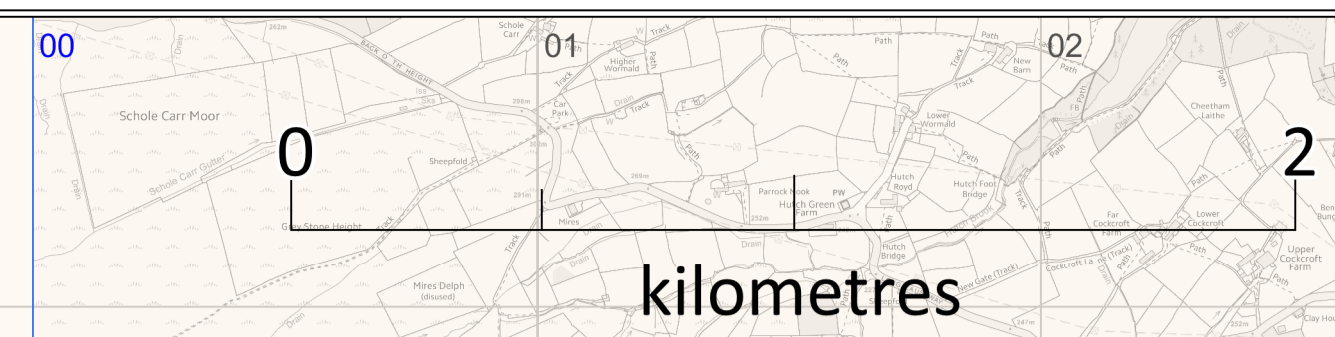
Map scale: 1:15,000 @ A1

© Crown Copyright and database right 2015. Ordnance Survey 100019241

Index to (A1) Map Sheets



Area administered by  
Peak District National  
Park Authority



Calderdale District

Oldham District