



Strategic Environmental Assessment Screening Statement for the Highway Design Guide Supplementary Planning Document (SPD)

June 2017

**Planning Policy Group
Investment and Regeneration Service
Kirklees Council
PO Box B93
Civic Centre III
Huddersfield
HD1 2JR**

Contents

1. Introduction	1
2. Scope of the Highway Design Guide SPD	2
3. Structure of the Highway Design Guide SPD	3
4. SA/SEA of the Local Plan	7
5. Screening Assessment	8
6. Conclusion	13
Appendix 1: Application of the SEA Directive	14
Appendix 2: SA of Local Plan policies	15

1. Introduction

1.1 Kirklees Council is in the process of preparing a Supplementary Planning Document (SPD) to provide further guidance on Highway Design and relevant policies within its Local Plan.

1.2 Kirklees Council has prepared a Screening Statement for the Highway Design Guide SPD to assess the need to undertake Strategic Environmental Assessment (SEA) of the SPD. The SEA Screening Statement will be consulted on with the relevant Statutory Environmental Bodies.

1.3 This SEA Screening Statement has been prepared in accordance with the requirements of Directive 2001/42/EC of the European Parliament and of the Council on the Assessment of the Effects of Certain Plans and Programmes on the Environment and the Environmental Assessment of Plans and Programmes Regulations 2004.

1.4 The following guidance has also been taken into account:

- The National Planning Policy Framework (NPPF) (DCLG, 2012).
- The National Planning Practice Guidance (PPG ID: 11) in relation to SEA/SA (DCLG, 2015).
- A Practical Guide to the Strategic environmental Assessment Directive (ODPM, 2005).

1.5 This screening consultation has been prepared to enable the specified Statutory Environmental Bodies (Natural England, Historic England and the Environment Agency) to comment on the appropriateness of the screening process and its conclusion for the proposed SPD.

2. Scope of the Highway Design Guide SPD

2.1 The SPD is being prepared to provide greater detail on Local Plan policies relevant to Highway Design. The SPD's primary purpose is to outline how development can achieve the Local Plan priorities and to provide additional guidance on the types and forms of Highway Design that are appropriate. The SPD will also explain how particular Local Plan policies should be interpreted and applied in a Kirklees context.

2.2 The overall purpose of the SPD will be to:

- Supplement the policies within the Local Plan
- Provide further guidance on key considerations for applications within Kirklees
- Outline Kirklees Council's priorities with respect to Highway Design
- Provide guidance on how to bring forward policy-compliant schemes
- Assist developers in the early development of schemes by identifying the matters for consideration which are likely to be raised within pre-application discussions

3. Structure of the Highway Design Guide SPD

3.1 As outlined in Section 2, the purpose of the SPD will be to provide a guide for developers wishing to develop land within Kirklees, and indicate what planners will expect to see during pre-application discussions. It will not create any new policy or amend it; however it will supplement the existing Local Plan policies relevant to Highway Design. In particular the SPD will explain how particular policies should be interpreted in order to overcome the access, drainage and topographical constraints evident within Kirklees District.

3.2 Table 1 sets out the proposed structure of the Highway Design Guide SPD. Once produced, a draft of the Highway Design Guide SPD will be subject to formal public consultation.

Table 1: Proposed Highway Design Guide SPD Structure

<u>Introduction:</u>	<ul style="list-style-type: none">- Purpose: Highway/Planning Authority aims and rationale for preparation- Supplementary Policies: PLP 4, PLP 5, PLP 20, PLP21, PLP 22, PLP 23, PLP 24, PLP 27, PLP 28, PLP 31, PLP 33, PLP34 and PLP 47.- Current Guidance: Manual for Streets 1 and 2 and Kirklees HDG (1986)- Role: SPD content and areas of guidance
<u>Preparing Applications:</u>	<ul style="list-style-type: none">- Design Process: Pre-application design stage considerations and amendments- Validation Requirements: Design and Access Statements/Transport Assessments/Transport Statements/Travel Plans/Quality Audits/Safety Audits
<u>Design Guidance:</u>	<ul style="list-style-type: none">- Key Objectives- Street Types:<ul style="list-style-type: none">o General Approacho Typology Hierarchy – Connector/Local Residential/Shared Space/Level Surface/Home Zone/Industrial Roadso Typology Guidance<ul style="list-style-type: none">▪ No. of dwellings/no. of vehicular access points/access arrangements/highway width/notional carriageway width/footway width/verge width/max. length between speed restraint features/min. forward visibilities/min.

	<p>centreline radius/direct vehicular access/pedestrian provision/pedestrian routes/max. dwellings/design speed/speed limit</p> <ul style="list-style-type: none"> ○ Measurements of forward visibility methodology for all street typologies ○ Carriageway widths ○ Private (non-adopted) Streets or Drives ○ Industrial Developments (inc. forecourt depths for various floor areas) ○ Mixed Use Schemes - Speed Restraint, e.g. <ul style="list-style-type: none"> ○ Gateways ○ Speed Control Bends ○ Carriageway Narrowing ○ Junction Speed Tables ○ Ramps ○ Vertical elements/contrasting textured surfacing/white lining/landscape islands - Vertical Alignment for street typologies <ul style="list-style-type: none"> ○ (Design speed, minimum K Value, Minimum Curve Length) - Junctions and Visibility <ul style="list-style-type: none"> ○ Principles ○ Measurement of Splays ○ X - Distance ○ Y – Distance (for ‘known’ and ‘unknown’ speeds) Derive visibilities from MfS ○ Obstacles to Visibility ○ Junction Layouts <ul style="list-style-type: none"> ▪ Recommended radii (radius in metres) and visibilities for intersections (X and Y Distance in metres) between Primary Routes (External Road Network/Major Industrial Road/Minor Industrial Road) and each street typology ▪ Recommended radii and visibilities for intersections between one typology and another typology ▪ Visibility Radius in metres by Kerb Radius (4/6/10 metres) for various Junction Deflections (80/90/100 degrees)
--	---

	<ul style="list-style-type: none"> ○ Minimum Junction Spacing in metres (for Consecutive/Staggered junctions) for each typology ○ Other matters: Gradients and Pedestrian Friendliness - Pedestrian Movement <ul style="list-style-type: none"> ○ Footways/footpath principles ○ Widths ○ Gradients and Crossfalls ○ Vertical Clearance ○ Steps ○ Crossing Points - Cycling <ul style="list-style-type: none"> ○ Principles ○ Widths ○ Access controls ○ Visibility ○ Parking - Inclusive Design <ul style="list-style-type: none"> ○ Principles ○ Ramps ○ Tactile Paving ○ Parking - Car Parking <ul style="list-style-type: none"> ○ Principles ○ Calculating Provision and Standards ○ Garages and Driveways ○ Communal Parking Areas ○ Car Free Developments ○ Commercial or Industrial Developments ○ TROs/Resident Parking Schemes - Servicing, Vehicle Tracking and Turning Spaces <ul style="list-style-type: none"> ○ Principles ○ Servicing - Emergency Access - Landscape Considerations within the Highway - Public Utilities - Drainage - Highway Structures - Public Transport - Road Markings and Signage
--	---

	<ul style="list-style-type: none"> - TROs - Adoption Procedures - Street Lighting - Crime and Disorder
<u>Materials and Construction:</u>	<ul style="list-style-type: none"> - General Approach - Specification - Carriageways <ul style="list-style-type: none"> ○ Design Criteria ○ Design Traffic Loading ○ Ground Conditions (Equilibrium CBR value to be used for design proposes) ○ Foundation (Pavement Foundation Design) ○ Pavement Design <ul style="list-style-type: none"> ▪ Acceptable Materials for Surface to Carriageways ▪ Acceptable Materials for Surface to Shared Surfaces ▪ Alternative Materials for Surface to Carriageways ▪ Alternative Materials for Surface to Shared Surfaces ▪ Pavement Construction for typologies and industrial roads (Base/Binder/Surface course in mm) ○ Footways, Kerbs and Crossings <ul style="list-style-type: none"> ▪ Acceptable Materials for Footways, Kerbs, and Crossings ▪ Alternative Materials for Footways, Kerbs, and Crossings ▪ Footway Construction (Base/sub-base, Binder course, Surface course) for Pedestrian footway or footpath / Vehicular footway crossing. - Drainage - Conservation Areas
<u>Appendices:</u>	<ul style="list-style-type: none"> - Parking standards by Use Class - Adoption Procedures - Section 278 Procedures - Structural Procedures - Street Lighting Procedures - Drainage Procedures

4. SA/SEA of the Local Plan

4.1 The Local Plan has itself been the subject of Sustainability Appraisal (including SEA) and this has included an assessment of the policies relevant to Highway Design against the SA Objectives. This SA/SEA process was undertaken throughout the Local Plan preparation process. The relevant Sustainability Appraisal documents and the Local Plan can be found on the Council's website at: <http://www.kirklees.gov.uk/beta/planning-policy/local-plan-submission-documents-2017.aspx> (see SD5 - SD9).

4.2 An extract of the assessment matrix for the relevant policies (i.e. PLP 4, PLP 5, PLP 20, PLP21, PLP 22, PLP 23, PLP 24, PLP 27, PLP 28, PLP 31, PLP 33, PLP34 and PLP 47) is shown in Appendix 2.

National Planning Policy Framework (NPPF) (March 2012)

4.3 Paragraph 165 of the NPPF states "A sustainability appraisal which meets the requirements of the European Directive on strategic environmental assessment should be an integral part of the plan preparation process, and should consider all the likely significant effects on the environment, economic and social factors". Paragraph 166 states that "Assessments should be proportionate, and should not repeat policy assessment that has already been undertaken".

National Planning Practice Guidance (NPPG)

4.4 The NPPG states that supplementary planning documents do not require a sustainability appraisal but may in exceptional circumstances require a strategic environmental assessment if they are likely to have significant environmental effects that have not already been assessed during the preparation of the Local Plan.

4.5 A strategic environmental assessment is unlikely to be required where a supplementary planning document deals only with a small area at a local level (see regulation 5(6) of the Environmental Assessment of Plans and Programmes Regulations 2004), unless it is considered that there are likely to be significant environmental effects.

4.6 Before deciding whether significant environment effects are likely, the local planning authority should take into account the criteria specified in Schedule 1 to the Environmental Assessment of Plans and Programmes Regulations 2004 and consult the consultation bodies.

5. Screening Assessment

5.1 The document “A Practical Guide to the Strategic Environmental Assessment Directive” (ODPM, 2005), sets out eight criteria that should be taken into account when screening a plan or programme to determine whether it will require SEA. Tables 2 and 3 below provide the screening assessment using these criteria and the recommended methodology within the guide.

Table 2: Application of the SEA Directive to the proposed SPD

	<u>Screening Question</u>	<u>Screening Assessment</u>
1.	Is the SPD subject to preparation and/or adoption by a national, regional or local authority OR prepared by an authority through legislative procedure by Parliament or Government?	Yes. The SPD will be prepared and adopted by Kirklees Council in its role as Local Planning Authority.
2.	Is the SPD required by legislative, regulatory or administrative provisions?	No. Preparation of SPD is not a requirement of legislation, regulatory or administrative provisions.
3.	Is the SPD prepared for agricultural, forestry, fisheries, energy, industry, transport or waste management, telecommunications, tourism, town and country planning or land-use, AND does it set a framework for future development consent of projects in Annexes I and II to the EIA Directive?	Yes. The SPD is intended to provide further guidance to the Kirklees Council Local Plan which is the planning policy framework for its area, including policy for land-use. The Local Plan has been subject to full Sustainability Appraisal (including SEA).
4.	Will the SPD, in view of its likely effects on sites, require an assessment under Article 6 or 7 of the Habitats Directive?	No. The local plan HRA (March 2017) rules out any adverse effects on Natura 2000 sites. As the SPD will not change or add to policy, proposals or designations within the Local Plan, it is not considered that further screening for such assessment is necessary as there would be no likely effects on European Sites.
5.	Does the SPD determine the use of small areas at local level, OR is it a minor modification of a plan subject to Article 3.2?	No. The policies, proposals and allocations that determine use within the SPD area have already been set within the Local Plan. It is not a modification but provides much detailed guidance on existing policies and the approach to highway design.
6.	Does the SPD set the framework for future development consent of projects (not just projects in Annexes to the EIA Directive)?	No. This framework is already set within the Local Plan. The SPD does not allocate new sites and is consistent with the Local Plan. The SPD will provide additional guidance on the existing policies, proposals or allocations

		within the Local Plan. It will also provide tailored policy guidance with respect to highway design.
7.	Is the SPD's sole purpose to serve the national defence or civil emergency, OR is it a financial or budget plan, OR is it co-financed by structural funds or EAGGF programmes 2000-2006/7?	No.
8.	Is it likely to have a significant effect on the environment?	<p>It is not likely that the SPD will have any significant effect within Kirklees that has not already been assessed through Sustainability Appraisal (including SEA) of the Local Plan. The assessment of Local Plan policies relevant to Highway Design concluded that there were predominantly positive impacts and no overall negative impacts when assessed against the Local Plan SA Objectives. The additional guidance which supplements each policy in the SPD will provide further detail tailored to inform highway design. Although there may be some environmental effects of providing specific guidance, the assessment of significant effects has already been covered in principle in the SA of the Local Plan. Therefore it is considered that the SPD does not need to be subject to further SEA. In addition, each policy has already been assessed through Sustainability Appraisal (including SEA) of the Local Plan. Local Plan policies that are likely to be specifically within the scope of the further guidance within the SPD are as follows:</p> <p>PLP 4: Providing infrastructure PLP 5: Masterplanning sites PLP 20: Sustainable travel PLP21: Highway safety and access PLP 22: Parking PLP 23: Core walking and cycling network PLP 24: Design PLP 27: Flood Risk PLP 28: Drainage PLP 31: Strategic Green Infrastructure Network PLP 33: Trees PLP34: Conserving and enhancing the water</p>

	environment PLP 47: Healthy, active and safe lifestyles
--	--

Table 3: Determining the likely significance of effects

	<u>SEA Directive Annex II: Criteria for determining likely significance of effects referred to in Article 3(5)</u>	<u>Comment</u>
The characteristics of plans and programmes, having regard, in particular, to:		
1a)	The degree to which the plan or programme sets a framework for projects and other activities, either with regard to the location, nature, size and operating conditions or by allocating resources	The SPD will provide further guidance to the policies, proposals and the allocations that are contained within the Local Plan which already sets the framework for the development projects and activities that could occur within the Kirklees area. The Local Plan as a whole, including those policies relevant to highway design, have been fully assessed for the purposes of SA/SEA. There will be no new policies or site allocations contained in the SPD. The SPD provides further information and guidance on implementation and interpretation of the existing policies through specific design details (for example materials, street widths, parking requirements etc.)
1b)	The degree to which the plan or programme influences other plans and programmes including those in a hierarchy	The Highway Design Guide SPD, in providing further guidance to the framework set within the Local Plan, does not directly affect other specific public sector plans or programmes but rather is influenced by the Local Plan and other higher tier planning policy, including the NPPF.
1c)	The relevance of the plan or programme for the integration of environmental considerations in particular with a view to promoting sustainable development	The Local Plan and other higher level policies set the context for achieving sustainable development. The SPD will provide further guidance as to how this can be achieved (for example by designing out flood risk). The SPD will not revisit or change the higher level policy requirements which have been subject to SA/SEA. The SA Report (October 2016) shows that the policies relevant to highway design have a positive impact overall and a specifically positive impact for the majority of the SA objectives when assessed against these. Environmental considerations such as flood risk, access, and

		safety will be taken one step further in the SPD when developing the design principles for the area, and are also considered largely positive.
1d)	Environmental problems relevant to the plan or programme	The Local Plan SA did not identify any negative effects against the SA Objectives for the policies relevant to highways design.
1e)	The relevance of the plan or programme for the implementation of Community legislation on the environment (e.g. plans and programmes linked to waste management or water protection).	It is unlikely that there would be any significant impact resulting from the further guidance for Highway Design.
Characteristics of the effects and of the area likely to be affected, having regard, in particular, to:		
2a)	The probability, duration, frequency and reversibility of the effects	The SPD will cover the same period of time as the Local Plan. A Sustainability Appraisal was undertaken for the Local Plan which included an assessment of the policies relevant to Highway Design that will be supplemented by the SPD. The evidence to support the SA for the Local Plan continues to be updated and the assessment looked at the probability, duration, frequency and reversibility of effects. Whilst the SPD will provide further guidance and supplement the existing policies in the Local Plan (and have largely positive effect), the probability, duration, frequency and reversibility of the effects from the implementation of the SPD will remain the same.
2b)	The cumulative nature of the effects	There are no likely cumulative effects that would result from the production of the Highway Design Guide SPD.
2c)	The trans-boundary nature of the effects	There will be no national trans boundary effects resulting from the Highway Design Guide SPD given that it will only apply on a district wide basis. Local administrative trans boundary effects were considered as part of the SA/SEA of the Local Plan.
2d)	The risks to human health or the environment (e.g. due to accidents)	Human health effects were assessed in the SA for the Local Plan (SA Objective 4. Improve the health of local people and ensure that they can access the health and social care they need). No risks to human health or the environment were identified in relation to the policies relative to highway

		design. Further specific guidance on highway design will provide more certainty that the probable positive effects already assessed in the SA for the Local Plan will arise.
2e)	The magnitude and spatial extent of the effects (geographical area and size of the population likely to be affected)	The spatial extent of the SPD will be the same as the area covered in the Local Plan. The potential impacts of development proposals in this geographical area have been assessed as part of the SA/SEA of the Local Plan. The SPD will focus on the comprehensive approach to development delivery in a way which will enhance the consideration given to highway design and in turn reduce the likelihood of adverse impacts arising with respect to safety, access, parking, cycling, walking, flood risk and drainage.
2f)	The value and vulnerability of the area likely to be affected due to: I. special natural characteristics or cultural heritage, II. exceeded environmental quality standards or limit values III. intensive landuse	The value and vulnerability of the area of the SPD have been considered as part of the SA/SEA of the Local Plan. The intensiveness of the proposed use of land is a factor for which information was available at the time of the SA/SEA assessment of the Local Plan and no significant impacts were identified in relation to this.
2g)	The effects on areas or landscapes which have a recognised national, Community or international protection status	The Local Plan does not allocate land for development within landscapes or areas of recognised national, community or international protection status.

6. Conclusion

6.1 In considering the scope of the Highway Design Guide SPD against the eight criteria from the guidance document “A Practical Guide to the Strategic Environmental Assessment Directive” (ODPM, 2005), it is concluded that the SPD will not change or introduce new planning policy over and above the Local Plan. Whilst there may be some environmental effects, these have already been covered in principle in the SA of the Local Plan.

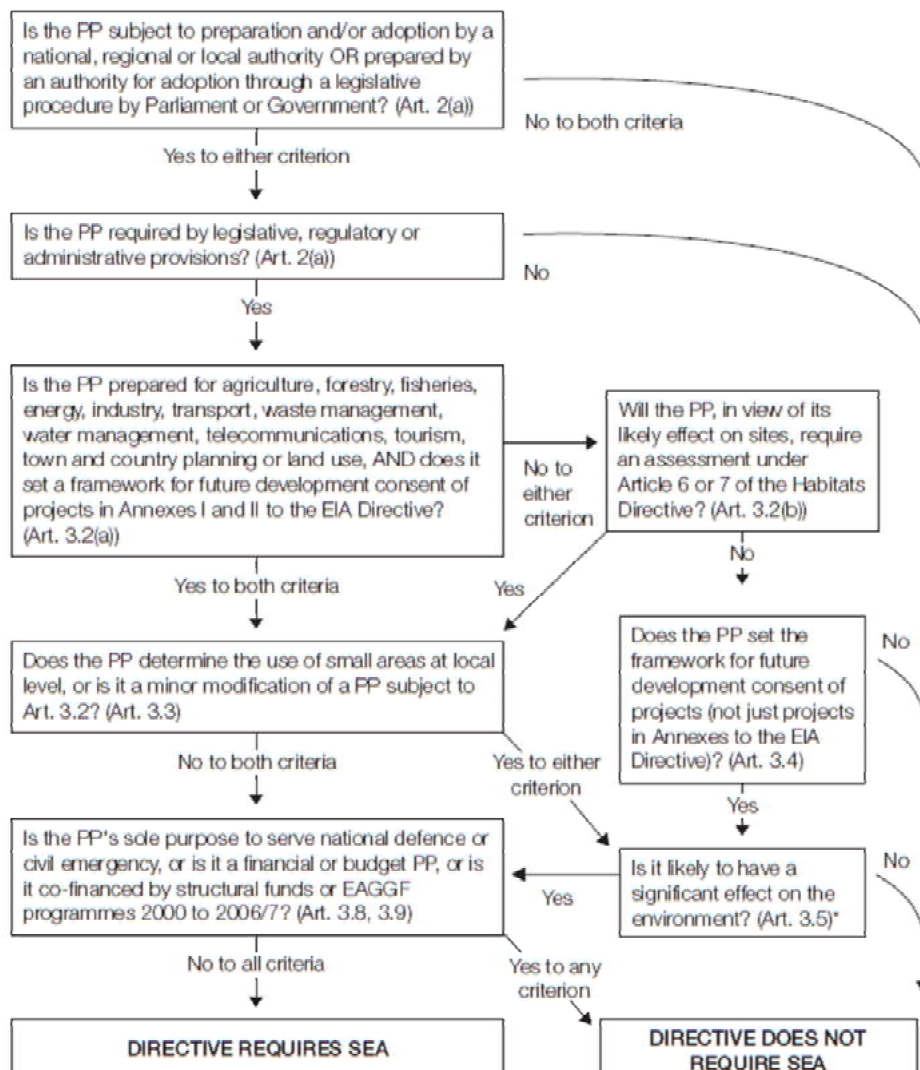
6.2 Therefore, it is considered that the SPD does not need to be subject to further SEA. The key areas where the SPD adds to the Local Plan policy is in terms of guidance for Highway Design with respect to infrastructure, masterplanning, sustainable travel, access, parking, design, drainage, walking/cycling networks, flood risk, green infrastructure, trees, and water management.

6.3 To conclude, it is not considered that SEA or SA is a formal requirement given that the principles within the SPD have already been covered in the Local Plan SA.

Appendices

Appendix 1: Application of the SEA Directive to plans and programmes

This diagram is intended as a guide to the criteria for application of the Directive to plans and programmes (PPs). It has no legal status.



*The Directive requires Member States to determine whether plans or programmes in this category are likely to have significant environmental effects. These determinations may be made on a case by case basis and/or by specifying types of plan or programme.

Appendix 2: Sustainability Appraisal of Local Plan Policies

PLP 4: Providing infrastructure

PLP 5: Masterplanning sites

PLP 20: Sustainable travel

PLP21: Highway safety and access

PLP 22: Parking

PLP 23: Core walking and cycling network

PLP 24: Design

PLP 27: Flood Risk

PLP 28: Drainage

PLP 31: Strategic Green Infrastructure Network

PLP 33: Trees

PLP34: Conserving and enhancing the water environment

PLP 47: Healthy, active and safe lifestyles

PLP4:

SA Objectives	SA score	Justification
1. Increase the number and range of employment opportunities available for local people, and ensure that they are accessible.	++	This policy would ensure that infrastructure is provided to support economic development and the development of new employment sites in the District. This approach would also result in the provision of transport infrastructure which may help residents to access employment sites in Kirklees. A significant positive effect is therefore expected on this SA objective.
2. Achieve an economy better capable of growth through increasing investment, innovation and Entrepreneurship.	++	This policy would result in the provision of appropriate infrastructure to support economic development in the District. This approach would also result in the provision of transport infrastructure which would support forthcoming economic development in Kirklees and make it more attractive to developers in the long term. A significant positive effect is therefore expected on this SA objective.
3. Ensure education facilities are available to all.	++	This policy would require the provision of infrastructure to support new development in Kirklees. This is likely to include education facilities, which will help to avoid existing schools becoming overloaded as a result of the population growth that will result from the Local Plan. A significant positive effect is therefore expected on this SA objective.
4. Improve the health of local people and ensure that they can access the health and social care they need.	++	This policy would require the provision of infrastructure to support new development in Kirklees. This is likely to include healthcare facilities, which will help to avoid existing facilities becoming overloaded as a result of the population growth that will result from the Local Plan. It is also likely to include walking and cycle routes and open space which could help to encourage and facilitate healthier and more active lifestyles. A significant positive effect is therefore expected on this SA objective.
5. Protect local amenity including avoiding noise and light pollution.	0	This policy would not have a direct effect on this SA objective.
6. Retain and enhance access to local services and facilities.	++	This policy would require the provision of infrastructure to support new development in Kirklees. This is likely to include community services and facilities, which will help to avoid existing services and facilities becoming overloaded as a result of the population growth that will result from the Local Plan. A significant positive effect is therefore expected on this SA objective.
7. Make our communities safer by reducing crime, anti-social behaviour and the fear of crime.	0	This policy would not have a direct effect on this SA objective.
8. Protect and enhance existing and support the provision of new recreation facilities and areas of open space and encourage their usage.	++	This policy would require the provision of infrastructure to support new development in Kirklees. This is likely to include open space, sports and recreation facilities, which will help to avoid existing facilities becoming overloaded as a result of the population growth that will result from the Local Plan. A significant positive effect is therefore expected on this SA objective.
9. Ensure all people are able to live in a decent home which meets their needs.	0	This policy would require infrastructure or associated financial contributes be provide to support new development in Kirklees. Although the provision of this infrastructure could potentially increase the profitability of residential developments, the policy requires that the infrastructure requirements do not compromise the financial viability of the development. Therefore, a negligible effect is expected on this SA objective.
10. Secure an effective and safe transport network which encourages	++	This policy would require the provision of infrastructure to support new development. This is likely to include sustainable transport infrastructure which would help to avoid a significant increase in car use as a result of the

SA Objectives	SA score	Justification
people to make use of sustainable and active modes of transport.		growth proposed in Kirklees. A significant positive effect is therefore expected on this SA objective.
11. Secure the efficient and prudent use of land.	0	This policy would not have a direct effect on this SA objective.
12. Protect and enhance the character of Kirklees and the quality of the landscape and townscape.	0	This policy would not have a direct effect on this SA objective.
13. Conserve and enhance the historic environment, heritage assets and their settings.	0	This policy would not have a direct effect on this SA objective.
14. Maximise opportunities to protect and enhance biodiversity and geodiversity.	0	This policy would not have a direct effect on this SA objective.
15. Reduce air, water and soil pollution.	++	This policy would require the provision of infrastructure to support new development in the Borough. This is likely to include sustainable transport infrastructure which would help to avoid a significant increase in car use and the associated emissions as a result of the growth proposed in Kirklees. It is also likely to include water treatment infrastructure which will help to avoid adverse impacts on water quality. A significant positive effect is therefore expected on this SA objective.
16. Prevent inappropriate new development in flood risk areas and ensure development does not contribute to increased flood risk for existing property and people.	++	This policy would require the provision of infrastructure to support new development in Kirklees. This is likely to include infrastructure relating to flood risk management including flood defences, which will help to avoid an increase in flood risk resulting from the new development proposed through the Local Plan. A significant positive effect is therefore expected on this SA objective.
17. Increase prevention, re-use, recovery and recycling of waste close to source.	0	This policy would not have a direct effect on this SA objective.
18. Increase efficiency in water, energy and raw material use.	0	This policy would not have a direct effect on this SA objective.
19. Reduce the contribution that the district makes to climate change.	+	This policy would require the provision of infrastructure to support new development. This may include public transport infrastructure and new community services and community facilities which may result in a reduced need for people to travel by car. A minor positive effect is therefore likely in relation to this SA objective.

PLP5:

SA Objectives	SA score	Justification
1: Increase the number and range of employment opportunities available for local people, and	+	PLP5 would have a positive effect on enabling people to access jobs as it requires developments (through Masterplanning) to reduce the need for car use, encourage sustainable transport use and make provision for public transport, walking and cycle routes. These measures would be required in developments that incorporate

SA Objectives	SA score	Justification
ensure that they are accessible.		employment, so should help ensure that people (including those without a car) can access jobs.
2. Achieve an economy better capable of growth through increasing investment, innovation and Entrepreneurship.	+	PLP5 may have an indirect minor positive effect on encouraging inward investment in Kirklees as it would help to ensure that new sites are built to high standards of design and are well-connected via sustainable transport. This may encourage companies to locate in Kirklees.
3. Ensure education facilities are available to all.	+	PLP5 requires developments to include facilities to serve the growing population, including schools; therefore a minor positive effect is likely.
4. Improve the health of local people and ensure that they can access the health and social care they need.	+	PLP5 requires developments to include facilities to serve the growing population, including healthcare facilities. It also requires developments to incorporate walking and cycle paths which should help people to use those active modes of travel; therefore a minor positive effect is likely.
5. Protect local amenity including avoiding noise and light pollution.	0	PLP5 will not have a direct effect on amenity.
6. Retain and enhance access to local services and facilities.	+	PLP5 requires developments to include facilities to serve the growing population. It also requires developments to incorporate sustainable transport links which will help to ensure that people including those without a car, have access to services and facilities further afield. A minor positive effect is therefore likely.
7. Make our communities safer by reducing crime, anti-social behaviour and the fear of crime.	0	PLP5 will not have a direct effect on crime and safety.
8. Protect and enhance existing and support the provision of new recreation facilities and areas of open space and encourage their usage.	+	PLP5 requires developments to include facilities to serve the growing population, including community halls (which may serve a recreational/cultural purpose) and open space, walking and cycle routes which may be used for recreational purposes. Therefore, a minor positive effect is likely.
9. Ensure all people are able to live in a decent home which meets their needs.	++	PLP5 requires development sites to provide a mix of housing that meets a range of needs. The requirements for Masterplanning of development sites should ensure that they are high quality and the housing is therefore 'decent'. A significant positive effect is therefore likely.
10. Secure an effective and safe transport network which encourages people to make use of sustainable and active modes of transport.	++	PLP5 requires sites to incorporate sustainable transport links, walking and cycle routes. In addition, providing services and facilities as part of the development will help to reduce the need for people to travel further afield for schools, healthcare etc. A significant positive effect is therefore likely.
11. Secure the efficient and prudent use of land.	0	PLP5 will not have a direct effect on the efficient use of land.
12. Protect and enhance the character of Kirklees and the quality of the landscape and	++	PLP5 includes a number of measures seeking to ensure that new development makes a positive contribution to the character and distinctiveness of the surrounding area. High standards of design must be used, respecting the character of the landscape, and accessible open space should be provided as part of the development which will

SA Objectives	SA score	Justification
townscape.		help to ensure that it's appearance is of high quality. A significant positive effect is therefore likely.
13. Conserve and enhance the historic environment, heritage assets and their settings.	++	PLP5 requires high standards of design to be used in developments, respecting local heritage. It should demonstrate a good understanding of and respect for heritage assets and their setting both within the site and the wider locality. This refers to both designated and undesignated assets, and Masterplans should include details of how heritage assets will be conserved and enhanced. A significant positive effect is therefore likely.
14. Maximise opportunities to protect and enhance biodiversity and geodiversity.	++	PLP5 requires developments to demonstrate a good understanding of and respect for the natural environment (taken to cover biodiversity and geodiversity). The measures in the policy seeking to mitigate flood risk will help to avoid the potential negative effects of flooding on the natural environment and the requirements for open space to be incorporated will help to provide habitat and avoid fragmentation. A significant positive effect is therefore likely.
15. Reduce air, water and soil pollution.	+	PLP5 requires the timely delivery of infrastructure into developments, including sewage connections, which will help to avoid existing infrastructure becoming overloaded and potential impacts on the water environment. The measures seeking to incorporate sustainable transport links will also help to reduce emissions from traffic. A minor positive effect is therefore likely.
16. Prevent inappropriate new development in flood risk areas and ensure development does not contribute to increased flood risk for existing property and people.	+	The requirement for open space to be incorporated into developments will help to ensure that permeable surfaces remain, to assist with infiltration and reduce the risk of surface water flooding. The policy also specifically requires appropriate measures to mitigate flood risk to be included in Masterplans. A minor positive effect is therefore likely.
17. Increase prevention, re-use, recovery and recycling of waste close to source.	0	PLP5 will not have a direct effect on waste.
18. Increase efficiency in water, energy and raw material use.	+	The requirement in PLP5 for Masterplans to assess the potential for energy efficient design including renewable energy schemes will have a minor positive effect on this SA objective.
19. Reduce the contribution that the district makes to climate change.	++	PLP5 requires sites to incorporate sustainable transport links, walking and cycle routes. In addition, providing services and facilities as part of the development will help to reduce the need for people to travel further afield for schools, healthcare etc. This will help to reduce emissions from vehicles. The requirement for Masterplans to assess the potential for energy efficient design including renewable energy schemes will also help to address emissions from built development and the impacts of increased demand for energy. A significant positive effect is therefore likely.

PLP20:

SA Objectives	SA score	Justification
1: Increase the number and range of employment opportunities available for local people, and ensure that they are accessible.	++	<p>Locating employment development in areas that are safely and conveniently accessible by sustainable modes of transport may improve levels of access to employment opportunities as people without a car would have the potential to access the site. Additionally, PLP20 promotes development that would utilise existing sustainable transport links, therefore possibly encouraging new employment developments to come forward in locations that are accessible to most people. Furthermore, the Policy requires developers to contribute to planned public transport, cycling and walking improvement schemes.</p> <p>Travel plan measures such as the incorporation of changing rooms and cycle parking are also encouraged by the policy to be included in new developments, which should increase the attractiveness of sustainable travel for employees including those who have a longer commuting distance. The range of employment opportunities for</p>
SA Objectives	SA score	Justification
		local people may also be increased as the policy identifies home working requirements to be included in new developments which would reduce journeys and possibly provide those with limited mobility with job opportunities. As such, a significant positive effect is likely on this SA objective.
2. Achieve an economy better capable of growth through increasing investment, innovation and Entrepreneurship.	+	The provision and promotion of sustainable transport infrastructure which PLP20 promotes may help to support economic growth as commercial developments often require improved transport infrastructure connections for their establishment and subsequent success. A minor positive effect is therefore expected on this SA objective.
3. Ensure education facilities are available to all.	+	The measures included in PLP20 to improve the sustainable transport system in Kirklees could provide additional routes and links, which in turn would increase the accessibility of educational institutions providing residents with more choice. A minor positive is therefore likely on this SA objective.
4. Improve the health of local people and ensure that they can access the health and social care they need.	++	<p>PLP20 supports and promotes sustainable forms of transport such as walking and cycling. This should have a positive effect on health by encouraging people to lead more active lifestyles. Furthermore, the policy seeks to minimise car use by encouraging travel planning which incorporates sustainable modes of travel and home working (the latter reducing the need to travel); all of which reduce emissions improving air quality which can otherwise have detrimental effects on peoples' health.</p> <p>Improvements to the sustainable transport system could also provide additional routes and links, which in turn would increase the accessibility of health and social care facilities. A significant positive is therefore likely on this SA objective.</p>
5. Protect local amenity including avoiding noise and light pollution.	+	PLP20 includes a range of measures with the aim of minimising car use, which would in turn help to reduce noise associated with car traffic. A minor positive is therefore likely on this SA objective.
6. Retain and enhance access to local services and facilities.	+	PLP20 seeks to locate new development in areas where the need to travel is reduced and where sustainable transport links are available – this is likely to mean that development is directed towards urban areas where access to services and facilities is generally good. The policy also supports residential development which incorporates opportunities for day to day activities on site which may include services and facilities, dependent upon settlement size. Locating development in areas that are safely and conveniently accessible by sustainable modes of transport would also increase levels of access to services and facilities as more people (including those without a car and those with limited mobility and unable to carry heavy shopping) would be able to reach services and facilities. A minor positive effect is likely on this SA objective overall.
7. Make our communities safer by reducing crime, anti-social behaviour and the fear of crime.	0	The policy is not likely to have a direct effect on this SA objective.
8. Protect and enhance existing and support the provision of new recreation facilities and areas of open space and encourage their usage.	+?	PLP20 states that the Council will support, and developers are expected to contribute to, cycle and walking improvement schemes which themselves could have recreational value. However, this depends on their nature and location. A minor positive effect may therefore occur on this SA objective although this is uncertain.
9. Ensure all people are able to live	0	The policy is not likely to have a direct effect on this SA objective.

SA Objectives	SA score	Justification
in a decent home which meets their needs.		
10. Secure an effective and safe transport network which encourages people to make use of sustainable and active modes of transport.	++	<p>The primary aim of PLP20 is to ensure that development is located in areas where the need to travel can be minimised and sustainable forms of transport could be used instead of private cars. The policy states that the Council will support developments that encourage use of sustainable and active modes of transport and that developers are expected to contribute to planned public transport, cycling and walking improvement schemes. Both of these requirements should ensure that people have access to sustainable transport and are able to achieve modal shift. The policy also sets out a user hierarchy which prioritises pedestrians and cyclists over car users.</p> <p>Additionally, travel plan measures such as changing rooms and cycle parking are also encouraged by the Policy to be included in new developments which should increase the attractiveness of sustainable travel for commuters. Furthermore, the policy states that new major planning applications will be subject to evaluation travel plans that include monitoring arrangements to ensure sustainable travel patterns are maintained. The policy also notes that some developments located at strategic and popular destinations (for example railway stations and entertainment venues) will require tailored travel plans that address specific local travel issues. Overall, a significant positive effect is therefore expected on this SA objective.</p>
11. Secure the efficient and prudent use of land.	0	The policy is not likely to have a direct effect on this SA objective.
12. Protect and enhance the character of Kirklees and the quality of the landscape and townscape.	0	The policy is not likely to have a direct effect on this SA objective.
13. Conserve and enhance the historic environment, heritage assets and their settings.	0	The policy is not likely to have a direct effect on this SA objective.
14. Maximise opportunities to protect and enhance biodiversity and geodiversity.	0	Although PLP20 encourages the use of more sustainable forms of transport Kirklees which may help to avoid any disturbance to biodiversity from car traffic (e.g. as a result of noise, vibration or air pollution), any such effect is expected to be minimal and spread over a long time period. A negligible effect on this SA objective is therefore expected.
15. Reduce air, water and soil pollution.	++	PLP20 seeks to minimise private car use by facilitating the use of sustainable modes of transport and home working (the latter reducing the need to travel) which would in turn reduce levels of air pollution. This would be particularly beneficial in the vicinity of the two AQMAs that have been declared in Kirklees. The policy also encourages the use of low emission vehicles to improve areas with low levels of air quality. A significant positive effect is therefore likely for this SA objective.
16. Prevent inappropriate new development in flood risk areas and ensure development does not	0	The policy is not likely to have a direct effect on this SA objective.

SA Objectives	SA score	Justification
contribute to increased flood risk for existing property and people.		
17. Increase prevention, re-use, recovery and recycling of waste close to source.	0	The policy is not likely to have a direct effect on this SA objective.
18. Increase efficiency in water, energy and raw material use.	0	The policy is not likely to have a direct effect on this SA objective.
19. Reduce the contribution that the district makes to climate change.	++	PLP20 aims to focus development in areas where the requirement for travel will be minimised. Additionally the Policy will encourage development which allows for the use of sustainable forms of transport (for example through the promotion of travel plans, easier access to bus services and improvement to cycle and walking schemes). It is expected that these provisions would have a significant positive effect on this SA objective given that they would reduce the need to travel by private car and thus reduce the emission of associated greenhouse gases in Kirklees.

PLP 21:

SA Objectives	SA score	Justification
1. Increase the number and range of employment opportunities available for local people, and ensure that they are accessible.	+	PLP21 requires planning applications to demonstrate that the new development can be accessed effectively and safely by all sections of the community and by different modes of transport; therefore increasing the accessibility of employment opportunities, especially for those without a private car. A minor positive effect is therefore likely on this SA objective.
2. Achieve an economy better capable of growth through increasing investment, innovation and Entrepreneurship.	+	The provision of sustainable transport and improved transport infrastructure as promoted through PLP21 may support economic growth as commercial developments often require improved transport infrastructure connections for their establishment and subsequent success. The Policy requires proposals to ensure the safe and efficient flow of traffic within the development and on the surrounding highway network, which could benefit the local economy as congestion could otherwise have negative effects. A minor positive effect is therefore expected on this SA objective.
3. Ensure education facilities are available to all.	+	PLP21 requires new developments to be accessible easily and safely by all sections of the community and by different modes of transport. This requirement could result in the provision of new routes and additional services that would increase accessibility to educational institutions. A minor positive is therefore likely on this objective.
4. Improve the health of local people and ensure that they can access the health and social care they need.	++	PLP21 requires pedestrians and cyclists to be taken into consideration in the design of a development; therefore encouraging people to use those active forms of transport. This should have a positive effect on health by encouraging people to lead more active lifestyles. The policy should also help to reduce car use which will also reduce emissions, thus improving air quality which can otherwise have a negative effect on health. Improving modal connections would also increase the accessibility of health and social care facilities, in particular for people without a car. A significant positive is therefore likely on this objective overall.
5. Protect local amenity including avoiding noise and light pollution.	+	PLP21 seeks to minimise the car use resulting from new development. This would help to reduce noise from vehicle traffic and a minor positive effect is therefore likely on this SA objective. In addition, the policy requires

SA Objectives	SA score	Justification
		proposals to be accompanied by a supporting Transport Assessment or Transport Statement where the development would generate significant trip generation providing detail about the impact on highway safety, air quality, noise and light restrictions.
6. Retain and enhance access to local services and facilities.	+	PLP21 requires new developments to be accessible easily and safely by all sections of the community and by different modes of transport. This requirement could result in the provision of new routes and additional services that would increase accessibility to services and facilities. A minor positive is therefore likely on this objective.
7. Make our communities safer by reducing crime, anti-social behaviour and the fear of crime.	+	PLP21 requires that new developments should take into account the features of surrounding roads and footpaths and provide adequate layout and visibility to allow the development to be accessed safely. A minor positive effect is therefore likely for this SA objective.
8. Protect and enhance existing and support the provision of new recreation facilities and areas of open space and encourage their usage.	+?	PLP21 expects new developments to facilitate connectivity and accessibility to existing and proposed public transport modes, cycling and walking routes. Both the cycling and walking routes could potentially be used for recreational purposes and therefore a potential minor positive effect could occur on this SA objective.
9. Ensure all people are able to live in a decent home which meets their needs.	0	PLP21 is not likely to have a direct effect on this SA objective.
10. Secure an effective and safe transport network which encourages people to make use of sustainable and active modes of transport.	++	PLP21 states that new development will not be permitted if it adds to highway safety problems. Additionally, if new developments are likely to result in significant trip generation, they are required to provide Travel Assessments and Travel Statements which would provide detail with regards the development's impact on highway safety. PLP21 promotes walking and cycling by requiring that development proposals provide on-site safe, secure and convenient cycle parking/storage facilities. A significant positive effect on this SA objective is therefore expected.
11. Secure the efficient and prudent use of land.	0	The Policy is not likely to have a direct effect on this SA objective.
12. Protect and enhance the character of Kirklees and the quality of the landscape and townscape.	0	The Policy is not likely to have a direct effect on this SA objective.
13. Conserve and enhance the historic environment, heritage assets and their settings.	0	The Policy is not likely to have a direct effect on this SA objective.
14. Maximise opportunities to protect and enhance biodiversity and geodiversity.	0	The Policy is not likely to have a direct effect on this SA objective.
15. Reduce air, water and soil pollution.	+	PLP21 encourages the use of active and sustainable modes of transport which will minimise emissions thus reducing air pollution. A minor positive effect is therefore likely.
16. Prevent inappropriate new	0	The Policy is not likely to have a direct effect on this SA objective.

SA Objectives	SA score	Justification
development in flood risk areas and ensure development does not contribute to increased flood risk for existing property and people.		
17. Increase prevention, re-use, recovery and recycling of waste close to source.	0	The Policy is not likely to have a direct effect on this SA objective.
18. Increase efficiency in water, energy and raw material use.	0	The Policy is not likely to have a direct effect on this SA objective.
19. Reduce the contribution that the district makes to climate change.	+	If a development is predicted to increase the need to travel and the existing road network is unable to accommodate this, the Policy states that the development will not be permitted. Furthermore, new developments are to provide opportunities for electric car charging infrastructure. This would help to reduce greenhouse gas emissions from vehicles and therefore a minor positive effect is likely.

PLP 22:

SA Objectives	SA score	Justification
1. Increase the number and range of employment opportunities available for local people, and ensure that they are accessible.	+	PLP22 requires that peripheral long stay car parks will be managed to accommodate commuters, and therefore provide parking access for people travelling to work. Over time, the Policy outlines that long stay car parks will be reduced in conjunction with sustainable transport improvements, so access to employment opportunities will not be compromised as the quantity of long stay provision is reduced. As such a minor positive effect is likely on this SA objective.
2. Achieve an economy better capable of growth through increasing investment, innovation and Entrepreneurship.	+	PLP22 states that in town, district and local centres, car parks close to the main shopping area will be for short-stay use and peripheral car parks for long stay use. This should help to maintain the vitality and viability of town, district and local centres in Kirklees, thereby helping to encourage local inward investment. As such, a minor positive effect is likely on this SA objective.
3. Ensure education facilities are available to all.	0	The Policy is not likely to have a direct effect on this SA objective.
4. Improve the health of local people and ensure that they can access the health and social care they need.	+	The aim of PLP22 is to over time discourage private car use and encourage sustainable transport use, which is likely to include active modes of transport such as walking and cycling, which can improve health. The Policy requires that cycle parking is provided within new developments. Parking will also be provided to meet the needs of disabled people. A minor positive effect is therefore likely on this SA objective.
5. Protect local amenity including avoiding noise and light pollution.	+	The aim of PLP22 is to discourage private car use and encourage the use of sustainable and active modes of transport, which would help to reduce noise pollution associated with vehicle traffic in the District. A minor positive effect is therefore likely on this SA objective.

SA Objectives	SA score	Justification
6. Retain and enhance access to local services and facilities.	++	The PLP22 states that in town, district and local centres, car parks close to the main shopping area will be for short-stay use and peripheral car parks for long stay use, and they will have parking charges that will not undermine the vitality of the centres. This will help to ensure that people are easily able to access the services and facilities that are concentrated at central locations and a minor positive effect is therefore likely for this SA objective.
7. Make our communities safer by reducing crime, anti-social behaviour and the fear of crime.	0	The Policy is not likely to have a direct effect on this SA objective.
8. Protect and enhance existing and support the provision of new recreation facilities and areas of open space and encourage their usage.	0	The Policy is not likely to have a direct effect on this SA objective.
9. Ensure all people are able to live in a decent home which meets their needs.	0	The Policy is not likely to have a direct effect on this SA objective.
10. Secure an effective and safe transport network which encourages people to make use of sustainable and active modes of transport.	++	The primary aim of PLP22 is to discourage private car use and encourage the use of sustainable and active modes of transport. Various measures are set out to achieve this, including gradual reductions in long stay parking in town centres in conjunction with improvements to sustainable transport opportunities. Cycling provision is also required in new developments. As such, a significant positive effect is therefore likely on this SA objective.
11. Secure the efficient and prudent use of land.	0	The Policy is not likely to have a direct effect on this SA objective.
12. Protect and enhance the character of Kirklees and the quality of the landscape and townscape.	0	The Policy is not likely to have a direct effect on this SA objective.
13. Conserve and enhance the historic environment, heritage assets and their settings.	0	The Policy is not likely to have a direct effect on this SA objective.
14. Maximise opportunities to protect and enhance biodiversity and geodiversity.	+	The measures set out in PLP22 seeking to reduce car use and encourage modal shift could have an indirect beneficial impact on biodiversity as a result of reduced air pollution associated with private car journeys. A minor positive effect is therefore expected on this SA objective.
15. Reduce air, water and soil pollution.	+	The measures set out in PLP22 seeking to reduce car use and encourage modal shift are expected to have a beneficial impact on reducing air pollution from vehicle traffic. A minor positive effect is therefore recorded for this SA objective.
16. Prevent inappropriate new development in flood risk areas and	0	The Policy is not likely to have a direct effect on this SA objective.

SA Objectives	SA score	Justification
ensure development does not contribute to increased flood risk for existing property and people.		
17. Increase prevention, re-use, recovery and recycling of waste close to source.	0	The Policy is not likely to have a direct effect on this SA objective.
18. Increase efficiency in water, energy and raw material use.	0	The Policy is not likely to have a direct effect on this SA objective.
19. Reduce the contribution that the district makes to climate change.	+	The measures set out in PLP22 seeking to reduce car use and encourage modal shift are expected to have a beneficial impact on reducing greenhouse gas emissions from vehicle traffic. A minor positive effect is therefore recorded for this SA objective.

PLP 23:

SA Objectives	SA score	Justification
1: Increase the number and range of employment opportunities available for local people, and ensure that they are accessible.	+	PLP23 would improve access to employment opportunities as it seeks to protect and enhance the walking and cycling network which will help to provide access to employment sites. The policy specifically aims encourage walking and cycling to employment sites and seeks to link settlements and employment sites. A minor positive effect on this SA objective is therefore likely.
2. Achieve an economy better capable of growth through increasing investment, innovation and Entrepreneurship.	0	The Policy is not likely to have a direct effect on this SA objective.
3. Ensure education facilities are available to all.	+	PLP23 would have a positive effect on access to education as it seeks to protect and enhance the walking and cycling network which will help to provide access to schools and colleges, particularly for people without cars. The policy specifically aims to connect development sites with the sustainable transport network and seeks to link settlements and urban centres where the majority of schools and colleges are likely to be located. A minor positive effect on this SA objective is therefore likely.
4. Improve the health of local people and ensure that they can access the health and social care they need.	++	PLP23 would have a positive effect on access to healthcare facilities as it seeks to protect and enhance the walking and cycling network which will help to provide access to GPs etc., particularly for people without cars. The policy specifically aims to connect development sites with the sustainable transport network and seeks to link settlements and urban centres where the majority of healthcare facilities are located. In addition, encouraging and facilitating cycling and walking in the District will help to increase levels of physical activity which can further benefit health. A significant positive effect on this SA objective is therefore likely.
5. Protect local amenity including avoiding noise and light pollution.	+	PLP23 seeks to improve the walking and cycling and network in Kirklees and as such may help to reduce the number of car journeys undertaken locally. This may help to reduce the potential for congestion in the District which could otherwise affect residential amenity. This approach may also reduce noise pollution caused by private

SA Objectives	SA score	Justification
		cars. A minor positive effect is therefore expected on this SA objective.
6. Retain and enhance access to local services and facilities.	+	PLP23 would have a positive effect on access to services and facilities as it seeks to protect and enhance the walking and cycling network which will help to provide access to services, particularly for people without cars. The policy specifically aims to connect development sites with the sustainable transport network and seeks to link settlements and urban centres where the majority of services and facilities are located. A minor positive effect on this SA objective is therefore likely.
7. Make our communities safer by reducing crime, anti-social behaviour and the fear of crime.	0	The Policy is not likely to have a direct effect on this SA objective.
8. Protect and enhance existing and support the provision of new recreation facilities and areas of open space and encourage their usage.	++	PLP23 would have a positive effect on access to recreational and cultural facilities as it seeks to protect and enhance the walking and cycling network in Kirklees. Encouraging and facilitating walking and cycling will also enable more people to participate as a form of recreation. A significant positive effect on this SA objective is therefore likely.
9. Ensure all people are able to live in a decent home which meets their needs.	0	The Policy is not likely to have a direct effect on this SA objective.
10. Secure an effective and safe transport network which encourages people to make use of sustainable and active modes of transport.	++	The primary purpose of PLP23 is to provide people with good opportunities to walk and cycle in place of driving. The policy specifically aims to connect development sites with the sustainable transport network and seeks to link settlements and urban centres where the majority of jobs, services and facilities are located via these routes. A significant positive effect on this SA objective is therefore likely.
11. Secure the efficient and prudent use of land.	0	The Policy is not likely to have a direct effect on this SA objective.
12. Protect and enhance the character of Kirklees and the quality of the landscape and townscape.	0	The Policy is not likely to have a direct effect on this SA objective.
13. Conserve and enhance the historic environment, heritage assets and their settings.	0	The Policy is not likely to have a direct effect on this SA objective.
14. Maximise opportunities to protect and enhance biodiversity and geodiversity.	0	The Policy is not likely to have a direct effect on this SA objective.
15. Reduce air, water and soil pollution.	+	PLP23 would have a positive effect on reducing air pollution from vehicles as it seeks to protect and enhance the walking and cycling network which will help to encourage modal shift. The policy specifically aims to connect development sites with the sustainable transport network and seeks to link settlements and urban centres. A positive effect on this SA objective therefore likely.

SA Objectives	SA score	Justification
16. Prevent inappropriate new development in flood risk areas and ensure development does not contribute to increased flood risk for existing property and people.	0	The Policy is not likely to have a direct effect on this SA objective.
17. Increase prevention, re-use, recovery and recycling of waste close to source.	0	The Policy is not likely to have a direct effect on this SA objective.
18. Increase efficiency in water, energy and raw material use.	0	The Policy is not likely to have a direct effect on this SA objective.
19. Reduce the contribution that the district makes to climate change.	+	PLP23 would have a positive effect on reducing greenhouse gas emissions from vehicles as it seeks to protect and enhance the walking and cycling network which will help to encourage modal shift. The policy specifically aims to connect development sites with the sustainable transport network and seeks to link settlements and urban centres. A positive effect on this SA objective is therefore likely.

PLP 24:

SA Objectives	SA score	Justification
1: Increase the number and range of employment opportunities available for local people, and ensure that they are accessible.	+	PLP24 refers to the incorporation of good design into all development proposals in the District. Although it would not affect the number of employment opportunities in Kirklees the policy would require new developments to be adaptable to change, allowing for the accommodation of new infrastructure including access routes. The policy also specifically requires that development proposals allow for good access to high quality public transport facilities. As such it is expected that new developments (including those which provide employment opportunities in Kirklees) should be easily accessible to local residents. As such a minor positive effect is expected on this SA objective.
2. Achieve an economy better capable of growth through increasing investment, innovation and Entrepreneurship.	0	The Policy is not likely to have a direct effect on this SA objective.
3. Ensure education facilities are available to all.	0	The Policy is not likely to have a direct effect on this SA objective.
4. Improve the health of local people and ensure that they can access the health and social care they need.	+	PLP24 relates to the incorporation of good design into all development proposals in the District. Although the policy would not provide for additional healthcare facilities within Kirklees it does promote the use of innovative building materials which can help to create warm and safe homes to the benefit of physical and mental health. The policy also promotes development which will encourage walkable neighbourhoods which may be of benefit to

CONTINUED OVERLEAF

SA Objectives	SA score	Justification
		local people's health and wellbeing. The requirement of the policy to address the needs of a range of different users (for example older people and disabled people) through good design is expected to further benefit the health and wellbeing of the community. As such a minor positive effect is expected on this SA objective.
5. Protect local amenity including avoiding noise and light pollution.	+	This policy relates to the incorporation of good design into all development proposals in the District. The policy gives specific consideration to the amenity of residents and there is a requirement to allow for reasonable separation between buildings and development free buffer zones between areas of housing use and employment use. Extensions are expected to be subservient to the original building and should be designed to minimise impact on residential amenity of future and neighbouring properties. As such this approach should limit the potential for negative impacts on local amenity which might occur as a result of noise or light pollution for example. A minor positive effect is expected on this SA objective.
6. Retain and enhance access to local services and facilities.	+	Although PLP24 would not directly provide for increased numbers of local services and facilities it would require that good design in the District allows for the creation of places which are considerate to accommodating services and infrastructure and have access to high quality public transport. As such this approach should help to improve access to services for residents and a minor positive effect is expected on this SA objective.
7. Make our communities safer by reducing crime, anti-social behaviour and the fear of crime.	+	PLP24 relates to the incorporation of good design into all development proposals in the District. The policy would attempt to reduce the risk of crime through design by incorporating enhanced and well-designed security features and promoting well-defined routes, over-looked streets and places in all development proposals. The policy also gives specific consideration to the design of open space in the District requiring that it is safe and overlooked, as such minimising the potential for crime or anti-social behaviour. As such a minor positive effect is expected on this SA objective.
8. Protect and enhance existing and support the provision of new recreation facilities and areas of open space and encourage their usage.	+	PLP24 relates to the incorporation of good design into all development proposals in the District. The policy requires that the places created through the design of new development proposals are inclusive and accessible. New open space in the District is expected to be accessible, safe, overlooked and strategically located within the site and well integrated into wider green infrastructure networks. Additionally development should contribute to the enhancement of the natural environment which may include the incorporation of open spaces into new developments. As such a minor positive effect is expected on this SA objective.
9. Ensure all people are able to live in a decent home which meets their needs.	++	PLP24 relates to the incorporation of good design into all development proposals in the District, including housing. This approach would require that innovative building materials and methods are used in new developments which may result in dwellings within Kirklees being of a particularly high standard in terms of warmth and safety. The policy would require developers to adhere to specific design codes and produce masterplans to guide development. As such a significant positive effect is expected on this SA objective.
10. Secure an effective and safe transport network which encourages people to make use of sustainable and active modes of transport.	+	PLP24 relates to the incorporation of good design into all development proposals in the District. The policy requires that developments are accessible and inclusive and make walking and cycling more attractive. Development is expected to meet the needs of all users (including disabled people). Development is also expected to accommodate access to high quality public transport facilities through the policy. As such a minor positive effect is expected on this SA objective.
11. Secure the efficient and prudent use of land.	+	PLP24 requires that good design is promoted within development by encouraging high levels of sustainability. One of the ways in which this aim is to be achieved is through encouraging the re-use and adaption of existing

SA Objectives	SA score	Justification
		buildings in the District where practicable. A minor positive effect is therefore expected on this SA objective.
12. Protect and enhance the character of Kirklees and the quality of the landscape and townscape.	++	The primary purpose of PLP24 is to ensure that good design is incorporated into all development proposals in the District. The policy specifically requires that all development respects and enhances the character of the townscape and landscapes in Kirklees in terms of form, scale, layout and detail. As such a significant positive effect is expected on this SA objective.
13. Conserve and enhance the historic environment, heritage assets and their settings.	++	PLP24 relates to the incorporation of good design into all development proposals in the District. The policy requires that new developments have consideration for character of the townscape in terms of form, scale, layout and details and also construction materials. Good design of new development is also to be used to respect and enhance the character of heritage assets. As such the policy is likely to help protect not only the identified special character of Conservation Areas in Kirklees but also the settings of local designated historic assets. A significant positive effect is therefore expected on this SA objective.
14. Maximise opportunities to protect and enhance biodiversity and geodiversity.	++	PLP24 relates to the incorporation of good design into all development proposals in the District. The policy requires that development proposals in Kirklees contribute toward the enhancement of the natural environment, support biodiversity and enhance ecological systems. Tree planting and the incorporation of vegetation into development proposals is also encourage and these measures may benefit local biodiversity through the provision of additional habitat space. As such a significant effect is expected on this SA objective.
15. Reduce air, water and soil pollution.	+	PLP24 relates to the incorporation of good design into all development proposals in the District. The policy requires that developments are designed to provide for the use of renewable energy. This approach may result in more properties in the District using energy provided from renewable sources reducing potential for air pollution derived from the burning of fossil fuels. New developments are also expected to incorporate opportunities for high quality public transport facilities and more walkable neighbourhoods as well as encouraging the use of electric and low emission vehicles thus potentially reducing need for journeys by private car which rely on fossil fuels in Kirklees. As such a minor positive effect is expected on this SA objective.
16. Prevent inappropriate new development in flood risk areas and ensure development does not contribute to increased flood risk for existing property and people.	+	PLP24 relates to the incorporation of good design into all development proposals in the District. The policy requires that good design includes measures to ensure buildings are resilient and resistant to flood risk. The policy also allows for the incorporation of green infrastructure into new proposals which may allow for increased infiltration thus minimising the potential for surface water flooding in the District. As such a positive effect is expected on this SA objective.
17. Increase prevention, re-use, recovery and recycling of waste close to source.	+	PLP24 relates to the incorporation of good design into all development proposals in the District. The policy encourages the use of reclaimed and recycled materials when construction new buildings and also requires that new developments include facilities to separate and store recycling. As such a positive effect is expected on this SA objective.

SA Objectives	SA score	Justification
18. Increase efficiency in water, energy and raw material use.	+	PLP24 relates to the incorporation of good design into all development proposals in the District. The policy would encourage design which allows for the incorporation of renewable energy opportunities, as well as promoting the use of recycled and reclaimed building materials. The use of innovative building materials and techniques may also result in dwellings which have better heat retention which could result in more efficient energy use in the District. As such a minor positive effect is expected on this SA objective.
19. Reduce the contribution that the district makes to climate change.	++	PLP24 relates to the incorporation of good design into all development proposals in the District. The policy requires that developments are designed to provide for the use of renewable energy. This approach may result in more properties in the District using energy provided from renewable sources reducing potential for greenhouse gas emissions derived from the burning of fossil fuels. New developments are also expected to incorporate opportunities for high quality public transport facilities and electric vehicle charging and allow for walkable environments thus potentially reducing need for journeys by private car which are dependent upon fossil fuels in Kirklees. As such a significant positive effect is expected on this SA objective.

PLP 27:

SA Objectives	SA score	Justification
1: Increase the number and range of employment opportunities available for local people, and ensure that they are accessible.	0	PLP27 is not expected to have a direct effect on job creation. While the criteria set out in PLP27 could prove restrictive to commercial developments in certain locations, developments in areas of inappropriately high flood risk would not be suitable areas for job creation anyway. A negligible effect is therefore recorded for this SA objective.
2. Achieve an economy better capable of growth through increasing investment, innovation and Entrepreneurship.	+	While the criteria set out in PLP27 could prove restrictive to commercial developments in certain locations, developments in areas of inappropriately high flood risk would not be suitable areas for economic development anyway. Reducing the extent of flood risk in Kirklees and ensuring that development is appropriately located will reduce the potential for economic losses to result from flooding. A minor positive effect is therefore likely on this SA objective.
3. Ensure education facilities are available to all.	+	PLP27 aims to help reduce the potential for flood risk in the district. Reducing the extent of flood risk in Kirklees and ensuring that development is appropriately located will reduce the potential for education facilities to be affected by flooding. A minor positive effect on this SA objective is likely.
4. Improve the health of local	+	PLP27 seeks to manage flood risk in Kirklees by ensuring that development is not located in areas of

CONTINUED OVERLEAF

SA Objectives	SA score	Justification
people and ensure that they can access the health and social care they need.		inappropriately high flood risk; therefore a positive effect on health is likely as the risk of people's physical and mental health and wellbeing being affected by flooding is reduced. In addition, if open spaces are incorporated into developments to mitigate flood risk, these can encourage active outdoor recreation. The risk of flooding facing the district, including healthcare facilities, will also be reduced. A minor positive effect is therefore expected on this SA objective.
5. Protect local amenity including avoiding noise and light pollution.	0	The Policy is not likely to have a direct effect on this SA objective.
6. Retain and enhance access to local services and facilities.	+	While the criteria set out in PLP27 could prove restrictive to development in certain locations, sites in areas of inappropriately high flood risk would not be suitable areas for the provision of services and facilities anyway. Reducing the extent of flood risk in Kirklees and ensuring that development is appropriately located will reduce the potential for services and facilities to be affected by flooding, and a minor positive effect on this SA objective is therefore likely.
7. Make our communities safer by reducing crime, anti-social behaviour and the fear of crime.	0	The Policy is not likely to have a direct effect on this SA objective.
8. Protect and enhance existing and support the provision of new recreation facilities and areas of open space and encourage their usage.	+?	PLP27 could have a positive effect on open space provision, if the mitigation measures which the policy requires were to include areas of open green space that can be used for recreational purposes. A potential but uncertain minor positive effect is therefore identified on this SA objective.
9. Ensure all people are able to live in a decent home which meets their needs.	+	While the criteria set out in PLP27 could prove restrictive to residential developments in certain locations, sites in areas of inappropriately high flood risk would not be suitable areas for housing development anyway. Reducing the extent of flood risk in Kirklees and ensuring that development is appropriately located will reduce the potential for peoples' homes to be affected by flooding, thereby improving their quality. As such a minor positive effect on this SA objective is likely.
10. Secure an effective and safe transport network which encourages people to make use of sustainable and active modes of transport.	+	PLP27 seeks to manage flood risk in Kirklees by ensuring that development is not located in areas of inappropriately high flood risk; therefore a minor positive effect on the transport network and this SA objective is likely as the risk of such infrastructure being affected by flooding is reduced.
11. Secure the efficient and prudent use of land.	0	The Policy is not likely to have a direct effect on this SA objective.
12. Protect and enhance the character of Kirklees and the quality of the landscape and townscape.	+	PLP27 could have a positive effect on this objective if the mitigation measures that may be required within developments were to include areas of open green space that have wider benefits for the character and appearance of the development and its setting in the wider townscape. The Policy also supports the targeted planting of vegetation in the upper catchment and at river banks where appropriate. This approach may benefit the local landscape. A minor positive effect on this SA objective is therefore identified.
13. Conserve and enhance the	+	PLP27 seeks to manage flood risk in Kirklees by ensuring that development is not located in areas which may act

SA Objectives	SA score	Justification
historic environment, heritage assets and their settings.		to increase local flood risk; therefore a positive effect on the cultural heritage is likely as the risk of assets such as listed buildings being affected by flooding is reduced.
14. Maximise opportunities to protect and enhance biodiversity and geodiversity.	+	PLP27 could have a positive effect on biodiversity if the mitigation measures that may be required within developments were to include areas of open green space that have benefits for habitat creation and connectivity. It is also stated that proposals involving building over existing culverts or the culverting or canalisation of water courses will not be permitted unless it can be demonstrated that there will be no detrimental effect biodiversity. The Policy also supports the targeted planting of vegetation in the upper catchment and at river banks where appropriate which may benefit habitat provision. A potential minor positive effect on this SA objective is therefore identified.
15. Reduce air, water and soil pollution.	+	PLP27 seeks to manage flood risk in Kirklees by ensuring that development is not located in areas of inappropriately high flood risk and incorporates appropriate mitigation. This approach is expected to reduce the risk of water quality being affected by flooding. The Policy also supports the targeted planting of vegetation in the upper catchment and at river banks where appropriate to improve water quality. A minor positive effect on this SA objective is therefore likely.
16. Prevent inappropriate new development in flood risk areas and ensure development does not contribute to increased flood risk for existing property and people.	++	The primary purpose of the measures set out in PLP27 is to reduce and manage flood risk in Kirklees, by requiring developments to be sited in lower flood risk areas where possible (adhering to the sequential test set out in national policy) and to incorporate appropriate mitigation. PLP27 reflects the flood zones set out in the Strategic Flood Risk Assessment (SFRA), which take into account the fact that in Kirklees there are areas of flood zone 3b which already contain development and cannot perform their role as the functional floodplain. Reflecting this approach in the policy means that it is locally applicable and the policy sets out specific criteria for managing flood risk in those areas. A significant positive effect is therefore expected on this SA objective.
17. Increase prevention, re-use, recovery and recycling of waste close to source.	0	The Policy is not likely to have a direct effect on this SA objective.
18. Increase efficiency in water, energy and raw material use.	0	The Policy is not likely to have a direct effect on this SA objective.
19. Reduce the contribution that the district makes to climate change.	0	While this policy relates to flood risk management, this SA objective refers to how Kirklees addresses the impacts of climate change and is addressed under SA objective 16 above. A negligible effect has therefore been identified for this SA objective.

PLP 28:

SA Objectives	SA score	Justification
1: Increase the number and range of employment opportunities	0	The Policy is not likely to have a direct effect on this SA objective.

SA Objectives	SA score	Justification
available for local people, and ensure that they are accessible.		
2. Achieve an economy better capable of growth through increasing investment, innovation and Entrepreneurship.	0	The Policy is not likely to have a direct effect on this SA objective.
3. Ensure education facilities are available to all.	0	The Policy is not likely to have a direct effect on this SA objective.
4. Improve the health of local people and ensure that they can access the health and social care they need.	+	The measures in PLP28 seek to ensure that drainage is appropriately dealt with in developments and encourages the use of SuDS. This will help to reduce the risk of flooding which can otherwise have adverse impacts on peoples' physical and mental health and wellbeing. A minor positive effect is therefore likely.
5. Protect local amenity including avoiding noise and light pollution.	0	The Policy is not likely to have a direct effect on this SA objective.
6. Retain and enhance access to local services and facilities.	0	The Policy is not likely to have a direct effect on this SA objective.
7. Make our communities safer by reducing crime, anti-social behaviour and the fear of crime.	0	The Policy is not likely to have a direct effect on this SA objective.
8. Protect and enhance existing and support the provision of new recreation facilities and areas of open space and encourage their usage.	0	The Policy is not likely to have a direct effect on this SA objective.
9. Ensure all people are able to live in a decent home which meets their needs.	0	The Policy is not likely to have a direct effect on this SA objective.
10. Secure an effective and safe transport network which encourages people to make use of sustainable and active modes of transport.	0	The Policy is not likely to have a direct effect on this SA objective.
11. Secure the efficient and prudent use of land.	0	The Policy is not likely to have a direct effect on this SA objective.
12. Protect and enhance the character of Kirklees and the quality of the landscape and townscape.	0	The Policy is not likely to have a direct effect on this SA objective.

SA Objectives	SA score	Justification
13. Conserve and enhance the historic environment, heritage assets and their settings.	0	The Policy is not likely to have a direct effect on this SA objective.
14. Maximise opportunities to protect and enhance biodiversity and geodiversity.	+	The measures in PLP28 seek to ensure that drainage is appropriately dealt with in developments and encourages the use of SuDS – these may have biodiversity benefits, for example if they involve habitat creation. This approach is likely to reduce the potential for local flooding meaning threat to local habitats and biodiversity in general will be reduced. A minor positive effect is therefore likely.
15. Reduce air, water and soil pollution.	++	The measures in PLP28 seek to ensure that drainage is appropriately dealt with in developments and encourages the use of SuDS. Development is to have no negative impact on water quality and should result in its improvement where possible. Waste water is expected to be dealt with at infrastructure at new development thus reducing the potential for pollution to occur via this source. A significant positive effect is therefore likely.
16. Prevent inappropriate new development in flood risk areas and ensure development does not contribute to increased flood risk for existing property and people.	++	The primary purpose of PLP28 is to reduce the risk of flooding by ensuring that drainage is addressed in developments and SuDS incorporated. The policy requires demonstration that surface water management solutions are designed to meet the requirements of developments over their lifetimes and there must be proposals for water storage which meet national standards and best practice. A significant positive effect is therefore likely.
17. Increase prevention, re-use, recovery and recycling of waste close to source.	+	PLP28 requires that waste water infrastructure required is available or can be co-ordinated so as to meet the need generated by new development if it is to be permitted. As such waste water should be appropriately handled at new developments. A minor positive effect is therefore expected on this SA objective.
18. Increase efficiency in water, energy and raw material use.	0	The Policy is not likely to have a direct effect on this SA objective.
19. Reduce the contribution that the district makes to climate change.	0	The Policy is not likely to have a direct effect on this SA objective.

PLP31:

SA Objectives	SA score	Justification
1: Increase the number and range of employment opportunities available for local people, and ensure that they are accessible.	0	The Policy is not likely to have a direct effect on this SA objective
SA Objectives	SA score	Justification
2. Achieve an economy better capable of growth through increasing investment, innovation and Entrepreneurship.	0	The Policy is not likely to have a direct effect on this SA objective.
3. Ensure education facilities are available to all.	0	The Policy is not likely to have a direct effect on this SA objective.
4. Improve the health of local people and ensure that they can access the health and social care they need.	+	PLP31 would likely be of benefit to peoples' health and well-being, as safeguarding and enhancing green infrastructure networks, green infrastructure assets and the range of functions that they provide should encourage and facilitate active outdoor recreation as well as walking and cycling, which can help to ensure that people lead more active lifestyles. As such a minor positive effect is expected on this SA objective.
5. Protect local amenity including avoiding noise and light pollution.	0	The Policy is not likely to have a direct effect on this SA objective.
6. Retain and enhance access to local services and facilities.	0	The Policy is not likely to have a direct effect on this SA objective.
7. Make our communities safer by reducing crime, anti-social behaviour and the fear of crime.	0	The Policy is not likely to have a direct effect on this SA objective.
8. Protect and enhance existing and support the provision of new recreation facilities and areas of open space and encourage their usage.	++	The primary purpose of policy PLP31 is to safeguard and enhance green infrastructure networks, green infrastructure assets and the range of functions that they provide. This approach is expected to help to ensure that attractive and appropriate spaces are available for people to participate in active outdoor recreation. The policy requires that development within and adjacent to Strategic Green Infrastructure Networks is designed in such a way as to retain or replace the function and connectivity of green infrastructure networks and assets. The policy also supports proposals for the creation of new or enhanced green infrastructure provided this would not conflict with other Local Plan policies.. A significant positive effect is therefore likely on this SA objective.
9. Ensure all people are able to live in a decent home which meets their needs.	0	The Policy is not likely to have a direct effect on this SA objective.
10. Secure an effective and safe transport network which encourages people to make use of sustainable and active modes of transport.	+	PLP31 requires that development proposals which are within or adjacent to Strategic Green Infrastructure Networks are integrated into existing and proposed cycling and walking routes. As such this approach should help to improve connectivity by modes of sustainable transport in Kirklees and therefore a minor positive effect is expected on this SA objective.
11. Secure the efficient and prudent use of land.	0	The Policy is not likely to have a direct effect on this SA objective.
12. Protect and enhance the character of Kirklees and the quality of the landscape and townscape.	++	PLP31 supports proposals for the creation of new or enhanced green infrastructure provided this would not conflict with other local plan policies. Development proposals within and adjacent to Strategic Green Infrastructure Networks are required by the policy to provide new or enhanced green infrastructure as appropriate which is to include natural greenspace, woodland and street trees. This approach is likely to have a positive effect on helping

SA Objectives	SA score	Justification
		to mitigate any potential impacts on surrounding landscapes which may be sensitive to new development and therefore a significant positive effect is expected on this SA objective.
13. Conserve and enhance the historic environment, heritage assets and their settings.	+	PLP31 seeks to safeguard and enhance green infrastructure and it is expected that this approach is likely to have a positive effect on the setting of heritage features, given that it will help to improve the setting of development and the appearance of the wider landscape within which heritage features sit. The identified areas of strategic green infrastructure include a number of heritage features including large numbers of listed buildings. A minor positive effect is therefore likely.
14. Maximise opportunities to protect and enhance biodiversity and geodiversity.	++	Green infrastructure has significant biodiversity benefits and safeguarding and enhancing green infrastructure which PLP31 seeks to do within the identified areas will help to provide habitat and ensure habitat connectivity, avoiding fragmentation as a result of new development. The identified areas of strategic green infrastructure include a number of designated biodiversity sites including Local Wildlife Sites. The Policy also supports proposals for the creation of new or enhanced green infrastructure provided this would not conflict with other local plan policies. A significant positive effect is therefore likely on this SA objective.
15. Reduce air, water and soil pollution.	+	PLP31 should help to on encourage sustainable transport use in Kirklees given that it supports the provision of green infrastructure which is expected to be integrated into existing and proposed cycling and walking routes where the development is within and adjacent to Strategic Green Infrastructure Networks. This approach may help to encourage a modal shift in Kirklees and as such could help to reduce air pollution from car transport in the district. A minor positive effect is therefore likely on this SA objective.
16. Prevent inappropriate new development in flood risk areas and ensure development does not contribute to increased flood risk for existing property and people.	+	PLP31 supports proposals for the creation of new or enhanced green infrastructure provided this would not conflict with other local plan policies. Within Strategic Green Infrastructure Networks, priority is to be given to safeguarding and enhancing green infrastructure networks and green infrastructure assets. This approach should help to prevent loss of greenspaces which facilitate the infiltration of surface water. A minor positive effect is therefore expected on this SA objective.
17. Increase prevention, re-use, recovery and recycling of waste close to source.	0	The Policy is not likely to have a direct effect on this SA objective.
18. Increase efficiency in water, energy and raw material use.	0	The Policy is not likely to have a direct effect on this SA objective.
19. Reduce the contribution that the district makes to climate change.	+	PLP31 should help to on encourage sustainable transport use in Kirklees given that it supports the provision of green infrastructure which is expected to be integrated into existing and proposed cycling and walking routes where the development is within and adjacent to Strategic Green Infrastructure Networks. This approach may help to encourage a modal shift in Kirklees and therefore may reduce greenhouse gases emissions locally. A minor positive effect is therefore expected on this SA objective.

PLP 33:

SA Objectives	SA score	Justification
1: Increase the number and range of employment opportunities available for local people, and ensure that they are accessible.	0	The Policy is not likely to have a direct effect on this SA objective.
2. Achieve an economy better capable of growth through increasing investment, innovation and Entrepreneurship.	0	The Policy is not likely to have a direct effect on this SA objective.

SA Objectives	SA score	Justification
3. Ensure education facilities are available to all.	0	The Policy is not likely to have a direct effect on this SA objective.
4. Improve the health of local people and ensure that they can access the health and social care they need.	0	The Policy is not likely to have a direct effect on this SA objective.
5. Protect local amenity including avoiding noise and light pollution.	0	The Policy is not likely to have a direct effect on this SA objective.
6. Retain and enhance access to local services and facilities.	0	The Policy is not likely to have a direct effect on this SA objective.
7. Make our communities safer by reducing crime, anti-social behaviour and the fear of crime.	0	The Policy is not likely to have a direct effect on this SA objective.
8. Protect and enhance existing and support the provision of new recreation facilities and areas of open space and encourage their usage.	0	The Policy is not likely to have a direct effect on this SA objective.
9. Ensure all people are able to live in a decent home which meets their needs.	0	The Policy is not likely to have a direct effect on this SA objective.
10. Secure an effective and safe transport network which encourages people to make use of sustainable and active modes of transport.	0	The Policy is not likely to have a direct effect on this SA objective.
11. Secure the efficient and prudent use of land.	0	The Policy is not likely to have a direct effect on this SA objective.
12. Protect and enhance the character of Kirklees and the quality of the landscape and townscape.	+	PLP33 requires development proposals to normally retain valuable or important trees within the application site, where they make a contribution to the distinctiveness of the location. Mitigation schemes should be incorporated where tree loss is deemed to be acceptable. A minor positive effect on this objective is therefore likely.
13. Conserve and enhance the historic environment, heritage assets and their settings.	0	The Policy is not likely to have a direct effect on this SA objective.
14. Maximise opportunities to protect and enhance biodiversity and geodiversity.	++	The primary purpose of policy PLP33 is to protect trees. The Policy requires development proposals to normally retain valuable or important trees within the application site, where they contribute to the environment including the Wildlife Habitat Network. As such this may help to protect locally important habitats and therefore a

SA Objectives	SA score	Justification
		significant positive effect on this objective is likely.
15. Reduce air, water and soil pollution.	0	The Policy is not likely to have a direct effect on this SA objective.
16. Prevent inappropriate new development in flood risk areas and ensure development does not contribute to increased flood risk for existing property and people.	0	The Policy is not likely to have a direct effect on this SA objective.
17. Increase prevention, re-use, recovery and recycling of waste close to source.	0	The Policy is not likely to have a direct effect on this SA objective.
18. Increase efficiency in water, energy and raw material use.	0	The Policy is not likely to have a direct effect on this SA objective.
19. Reduce the contribution that the district makes to climate change.	+	PLP33 states that the Council will not grant planning permission for developments which directly or indirectly threaten trees or woodlands of significant amenity. Development proposals are normally to be required to retain valuable or important trees within the application site, where they make a contribution to the distinctiveness of the location. Retaining trees is expected to be of benefit in terms of climate change mitigation in the district and a minor positive effect is therefore likely on this SA objective.

PLP 34:

SA Objectives	SA score	Justification
1: Increase the number and range of employment opportunities available for local people, and ensure that they are accessible.	0	The Policy is not likely to have a direct effect on this SA objective.
2. Achieve an economy better capable of growth through increasing investment, innovation and Entrepreneurship.	0	The Policy is not likely to have a direct effect on this SA objective.
3. Ensure education facilities are available to all.	0	The Policy is not likely to have a direct effect on this SA objective.
4. Improve the health of local people and ensure that they can access the health and social care they need.	+	PLP34 seeks to conserve and enhance the water environment and provides for measures that will help to reduce the risk of flooding and water pollution which could otherwise have adverse impacts on local peoples' health. A minor positive effect is therefore likely on this SA objective.
5. Protect local amenity including	0	The Policy is not likely to have a direct effect on this SA objective.

SA Objectives	SA score	Justification
avoiding noise and light pollution.		
6. Retain and enhance access to local services and facilities.	0	The Policy is not likely to have a direct effect on this SA objective.
7. Make our communities safer by reducing crime, anti-social behaviour and the fear of crime.	0	The Policy is not likely to have a direct effect on this SA objective.
8. Protect and enhance existing and support the provision of new recreation facilities and areas of open space and encourage their usage.	0	The Policy is not likely to have a direct effect on this SA objective.
9. Ensure all people are able to live in a decent home which meets their needs.	0	The Policy is not likely to have a direct effect on this SA objective.
10. Secure an effective and safe transport network which encourages people to make use of sustainable and active modes of transport.	0	The Policy is not likely to have a direct effect on this SA objective.
11. Secure the efficient and prudent use of land.	0	The Policy is not likely to have a direct effect on this SA objective.
12. Protect and enhance the character of Kirklees and the quality of the landscape and townscape.	0	The Policy is not likely to have a direct effect on this SA objective.
13. Conserve and enhance the historic environment, heritage assets and their settings.	0	The Policy is not likely to have a direct effect on this SA objective.
14. Maximise opportunities to protect and enhance biodiversity and geodiversity.	+	PLP34 seeks to conserve and enhance the water environment – this is likely to have a positive effect on aquatic biodiversity. The policy specifies that proposals will be supported which conserve and enhance the ecological value of the water environment including the functionality of habitat networks; therefore a minor positive effect is likely on this SA objective.
15. Reduce air, water and soil pollution.	++	The primary aim of PLP34 is to conserve and enhance the water environment including water quality. The policy includes a range of measures seeking to achieve this, including stating that proposals will be supported where they conserve and enhance water quality and contribute towards achieving "good status or potential" under the Water Framework Directive. A significant positive effect is therefore likely on this SA objective.
16. Prevent inappropriate new development in flood risk areas and	+	PLP34 seeks to conserve and enhance the water environment and includes a number of measures which will help to reduce flood risk, including encouraging the incorporation of SuDS in developments and the provision of

SA Objectives	SA score	Justification
ensure development does not contribute to increased flood risk for existing property and people.		soakaways. A minor positive effect on this SA objective is therefore likely.
17. Increase prevention, re-use, recovery and recycling of waste close to source.	0	The Policy is not likely to have a direct effect on this SA objective.
18. Increase efficiency in water, energy and raw material use.	++	Policy PLP34 seeks to conserve and enhance the water environment and stipulates that proposals will be supported which manage water demand and improve water efficiency. Specific techniques such as rainwater harvesting and grey-water recycling have been identified in the text of the policy. A significant positive effect is therefore likely on this SA objective.
19. Reduce the contribution that the district makes to climate change.	0	The Policy is not likely to have a direct effect on this SA objective.

PLP 47:

SA Objectives	SA score	Justification
1. Increase the number and range of employment opportunities available for local people, and ensure that they are accessible.	+	PLP47 supports active and sustainable transport use as well as the incorporation of active design into new developments. These measures could provide additional transport routes and links, which in turn could increase the accessibility of employment opportunities. A minor positive is therefore likely on this SA objective.
2. Achieve an economy better capable of growth through increasing investment, innovation and Entrepreneurship.	0	The Policy is not likely to have a direct effect on this SA objective.
3. Ensure education facilities are available to all.	+	PLP47 supports active and sustainable transport use as well as encouraging the incorporation of active design into new developments. These measures could provide additional transport routes and links, which in turn could increase the accessibility of educational institutions providing residents with more choice. A minor positive is therefore likely on this SA objective.
4. Improve the health of local people and ensure that they can access the health and social care they need.	++	<p>PLP47 seeks to increase access to high quality and well maintained green spaces and green infrastructure, active designs, play, sports, leisure and cultural facilities to promote health and mental well-being. The creation of high quality environments which minimise and mitigate against potential harm from risks such as pollution and other environmental hazards is also encouraged.</p> <p>Additionally, PLP47 seeks to ensure that the air quality in the district is monitored and maintained and where required, instigate appropriate mitigation measures as part of new development proposals which will contribute to improving health (especially relating to respiratory conditions). The Policy promotes the co-location of recreation and sport facilities within close proximity to community facilities for education and health which should improve accessibility of such facilities meaning residents will be more likely to make use of them. PLP47 also supports initiatives that address poor health indicators. In relation to reducing obesity, PLP47 aims to support initiatives which enable or improve access to healthy food and manage the location of hot food takeaways, especially in poor areas of health.</p> <p>Health Impact Assessments will be carried out for all proposals that are likely to have a significant impact on the health and well-being of the local communities, or particular groups within it, in order to identify measures to maximise the health benefits of the development and avoid any potential adverse impacts. A significant positive effect is therefore expected on this this SA objective.</p>
5. Protect local amenity including avoiding noise and light pollution.	+	PLP47 seeks to create high quality environments that are free from pollution. Therefore a minor positive effect is likely on this objective.

SA Objectives	SA score	Justification
6. Retain and enhance access to local services and facilities.	+	PLP47 supports active and sustainable transport use as well as the incorporation of active design into new developments. These measures could provide additional transport routes and links, which in turn, could increase the accessibility of local services and facilities. A minor positive is therefore likely on this objective.
7. Make our communities safer by reducing crime, anti-social behaviour and the fear of crime.	+	PLP47 supports initiatives that address antisocial behaviour in the district. A minor positive is therefore likely on this SA objective.
8. Protect and enhance existing and support the provision of new recreation facilities and areas of open space and encourage their usage.	++	PLP47 seeks to increase access to high quality and well maintained green spaces and green infrastructure, play, sports and leisure facilities. In addition, PLP47 supports active transport modes as well as the incorporation of active design into new developments. This approach could provide additional routes and links, which could help to improve access to local recreation facilities. A significant positive effect is therefore likely on this SA objective.
9. Ensure all people are able to live in a decent home which meets their needs.	0	The Policy is not likely to have a direct effect on this SA objective.
10. Secure an effective and safe transport network which encourages people to make use of sustainable and active modes of transport.	++	PLP47 supports the use of active and sustainable modes of transport as well as encouraging the incorporation of active design into new developments. A significant effect is therefore likely on this SA objective.
11. Secure the efficient and prudent use of land.	0	The Policy is not likely to have a direct effect on this SA objective.
12. Protect and enhance the character of Kirklees and the quality of the landscape and townscape.	0	The Policy is not likely to have a direct effect on this SA objective.
13. Conserve and enhance the historic environment, heritage assets and their settings.	0	The Policy is not likely to have a direct effect on this SA objective.
14. Maximise opportunities to protect and enhance biodiversity and geodiversity.	+	Creating high-quality, inclusive and green environments, will contribute to enhancing biodiversity and improving local habitat provision in Kirklees. As such, a minor positive effect is likely on this SA objective.
15. Reduce air, water and soil pollution.	++	PLP47 aims to create high quality environments which minimise and mitigate against potential harm from risks such as pollution and other environmental hazards. Additionally, the Policy seeks to ensure that the air quality in the district is monitored and maintained and where required and instigate appropriate mitigation measures as part of new development proposals. A significant positive effect is therefore likely on this SA objective.
16. Prevent inappropriate new development in flood risk areas and ensure development does not	+	PLP47 seeks to increase access to open space and green infrastructure. These can be beneficial in relation to mitigating flood risk. A minor positive effect is therefore likely on this objective.

SA Objectives	SA score	Justification
contribute to increased flood risk for existing property and people.		
17. Increase prevention, re-use, recovery and recycling of waste close to source.	0	The Policy is not likely to have a direct effect on this SA objective.
18. Increase efficiency in water, energy and raw material use.	0	The Policy is not likely to have a direct effect on this SA objective.
19. Reduce the contribution that the district makes to climate change.	+	PLP47 supports active and sustainable modes of transport as well as encouraging the incorporation of active design into new developments. A minor effect is therefore likely on this SA objective as it promotes modal shift from private car use to sustainable forms of transport which should help to reduce the associated greenhouse gas emissions.