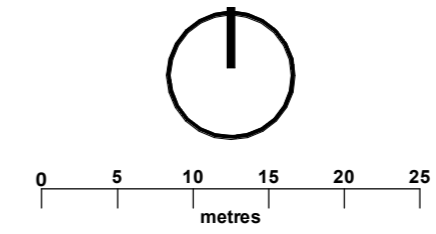


This drawing is not to be scaled. All dimensions to be checked on site. Discrepancies, ambiguities and / or omissions between this drawing and information given elsewhere must be reported immediately to head office for clarification before proceeding.



**Legend**

- Site Boundary
- Softworks**
- Proposed Ornamental Planting
- Proposed Wildflower Planting Emorsgate EL1 – Flowering Lawn Mixture
- Proposed Woodland Planting
- Proposed Green Roof
- Proposed Tree
- Existing Tree

**Ornamental Planting (Shade)**

Abbrev.	Species	Size	Specification	Density
AM	Alchemilla mollis (deciduous)	2L	Full Pot: C	9/m <sup>2</sup>
AHBB	Anemone x hybrid 'Honerie jobert' (deciduous)	2L	Full Pot: C	9/m <sup>2</sup>
ACP	Astilbe chinensis var. taquetii 'purpurlanze' (winter interest)	2L	Full Pot: C	9/m <sup>2</sup>
AR	Ajuga reptans (evergreen)	2L	Full Pot: C	9/m <sup>2</sup>
BO	Bergenia 'Overture' (evergreen)	2L	Full Pot: C	9/m <sup>2</sup>
AM	Astrantia major (deciduous)	2L	Full Pot: C	9/m <sup>2</sup>
PAS	Persicaria affinis 'Superba'	2L	Full Pot: C	9/m <sup>2</sup>
PTGP	Pachysandra terminalis 'Green Carpet' (evergreen)	2L	Full Pot: C	9/m <sup>2</sup>
HO	Helleborus orientalis (evergreen)	2L	Full Pot: C	9/m <sup>2</sup>
AS	Asplenium scolopendrium (evergreen)	2L	Full Pot: C	9/m <sup>2</sup>
DA	Dryopteris affinis (semi evergreen)	2L	Full Pot: C	9/m <sup>2</sup>
DFM	Dryopteris filix-mas	2L	Full Pot: C	9/m <sup>2</sup>
PS	Polystichum setiferum (evergreen)	2L	Full Pot: C	9/m <sup>2</sup>
DD	Dryopteris dilatata (semi evergreen)	2L	Full Pot: C	9/m <sup>2</sup>
AL	Anemanthe lessoniana (semi evergreen)	2L	Full Pot: C	9/m <sup>2</sup>
SC	Sesleria caerulea (evergreen)	2L	Full Pot: C	9/m <sup>2</sup>

**Woodland Herb Layer**

Number	Abbrev.	Species	Size	Specification	Density
tbc	AR	Ajuga reptans (Bugleherb)	1L	Full Pot: C	9/m <sup>2</sup>
tbc	AU	Allium ursinum (Ramsoms)	1L	Full Pot: C	9/m <sup>2</sup>
tbc	AN	Anemone nemorosa (Wood anemone)	1L	Full Pot: C	9/m <sup>2</sup>
tbc	AS	Anthriscus sylvestris (Cow Parsley)	1L	Full Pot: C	9/m <sup>2</sup>
tbc	AM	Arum maculatum (Cuckoo-pint)	1L	Full Pot: C	9/m <sup>2</sup>
tbc	AF	Athyrium filix-femina (Lady fern)	1L	Full Pot: C	9/m <sup>2</sup>
tbc	CT	Campanula trachelium (Nettle-leaved Bellflower)	1L	Full Pot: C	9/m <sup>2</sup>
tbc	CM	Convallaria majalis (Lily of the valley)	1L	Full Pot: C	9/m <sup>2</sup>
tbc	DA	Dryopteris affinis (Golden Shield Fern)	1L	Full Pot: C	9/m <sup>2</sup>
tbc	EC	Eupatorium cannabinum (Hemp-agrimony)	1L	Full Pot: C	9/m <sup>2</sup>
tbc	GO	Galium oderatum (Woodruff)	1L	Full Pot: C	9/m <sup>2</sup>
tbc	GS	Geranium sylvaticum (Wood crane's-bill)	1L	Full Pot: C	9/m <sup>2</sup>
tbc	GR	Geum rivale (Water avens)	1L	Full Pot: C	9/m <sup>2</sup>
tbc	HH	Hedera helix (Common ivy)	1L	Full Pot: C	9/m <sup>2</sup>
tbc	OA	Oxalis acetosella (Wood sorrel)	1L	Full Pot: C	9/m <sup>2</sup>
tbc	PVe	Primula veris (Cowslip)	1L	Full Pot: C	9/m <sup>2</sup>
tbc	PVu	Primula vulgaris (Primrose)	1L	Full Pot: C	9/m <sup>2</sup>
tbc	SD	Silene dioica (Red campion)	1L	Full Pot: C	9/m <sup>2</sup>

**Ornamental Planting (Sun)**

Abbrev.	Species	Size	Specification	Density
RFSG	Rudbeckia fulgida var. sullivantii 'Goldsturm'	2L	Full Pot: C	9/m <sup>2</sup>
AMP	Achillea millefolium paprika	2L	Full Pot: C	9/m <sup>2</sup>
PAA	Persicaria amplexicaulis 'Alba'	2L	Full Pot: C	9/m <sup>2</sup>
VVD	Veronicastrum virginicum 'Diana'	2L	Full Pot: C	9/m <sup>2</sup>
HMB	Helenium 'Moerheim beauty'	2L	Full Pot: C	9/m <sup>2</sup>
HRT	Helenium 'Ruby tuesday'	2L	Full Pot: C	9/m <sup>2</sup>
KPOV	Kniphofia popsicle 'Orange Vanilla'	2L	Full Pot: C	9/m <sup>2</sup>
VB	Verbena bonariensis	2L	Full Pot: C	9/m <sup>2</sup>
SC	Schizostylis coccinea Pink Princess	2L	Full Pot: C	9/m <sup>2</sup>
SS	Sisyrinchium striatum	2L	Full Pot: C	9/m <sup>2</sup>
AM	Anemanthe lessoniana	2L	Full Pot: C	9/m <sup>2</sup>
NS	Nassella tenuissima	2L	Full Pot: C	9/m <sup>2</sup>
MCM	Molinia caerulea 'moorhexe'	2L	Full Pot: C	9/m <sup>2</sup>
MSA	Miscanthus sinensis 'Abundance'	2L	Full Pot: C	9/m <sup>2</sup>
MCA	Molinia caerulea subsp. arundinacea 'transparent'	2L	Full Pot: C	9/m <sup>2</sup>
CAKF	Calamagrostis acutiflora 'Karl Foerster'	2L	Full Pot: C	9/m <sup>2</sup>

**Ornamental Tree Planting**

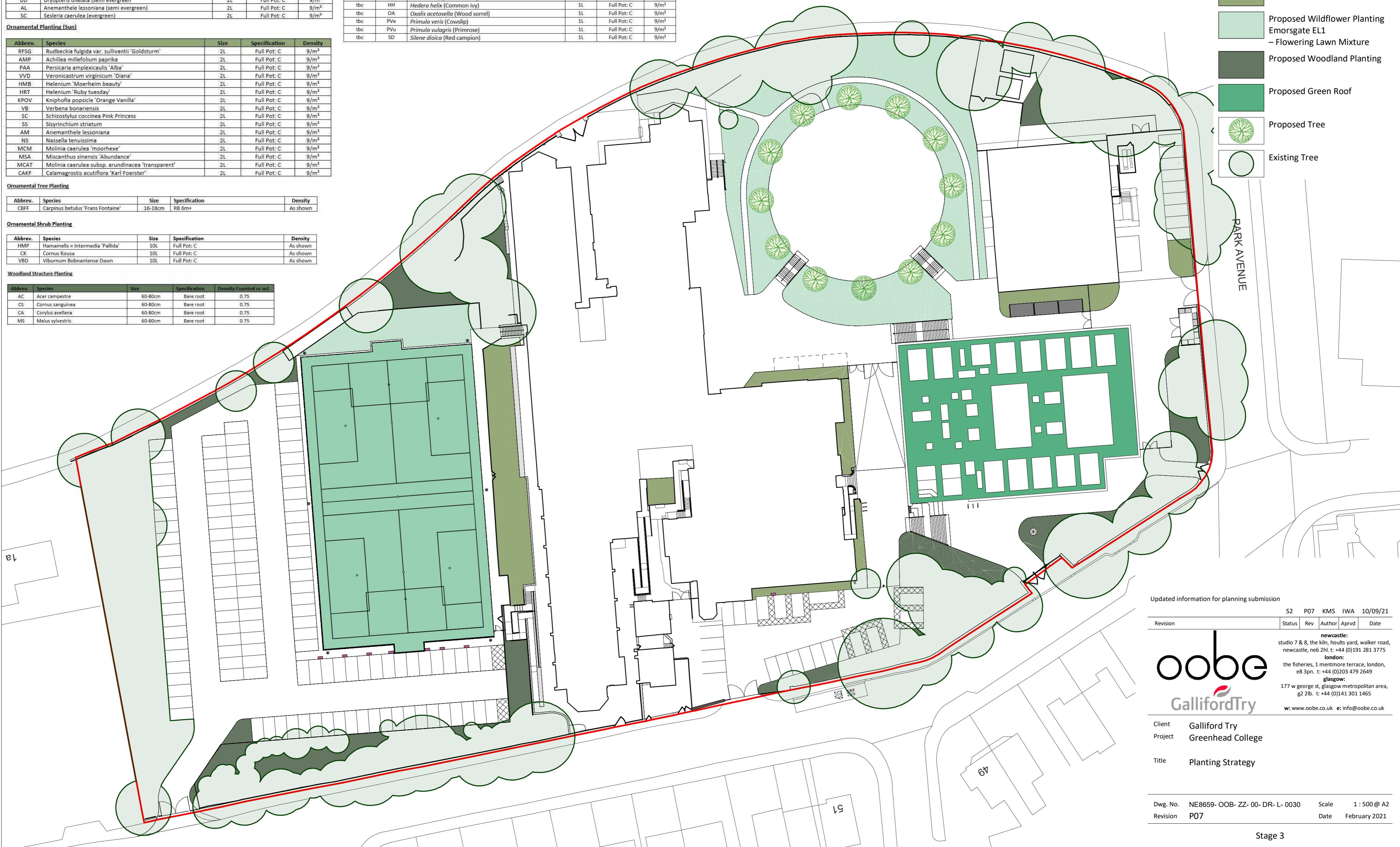
Abbrev.	Species	Size	Specification	Density
CBFF	Carpinus betulus 'Frans Fontaine'	16-18cm	RB 6m+	As shown

**Ornamental Shrub Planting**

Abbrev.	Species	Size	Specification	Density
HMP	Hamamelis x intermedia 'Pallida'	10L	Full Pot: C	As shown
CK	Cornus Kousa	10L	Full Pot: C	As shown
VBD	Viburnum Bobantense Dawn	10L	Full Pot: C	As shown

**Woodland Structure Planting**

Abbrev.	Species	Size	Specification	Density Counted on m2
AC	Acer campestre	60-80cm	Bare root	0.75
CS	Cornus sanguinea	60-80cm	Bare root	0.75
CA	Corylus avellana	60-80cm	Bare root	0.75
MS	Malus sylvestris	60-80cm	Bare root	0.75



Updated information for planning submission

Revision	Status	Rev	Author	Aprvd	Date
			S2	P07	KMS IWA 10/09/21

**oobe**  
GallifordTry

newcastle:  
studio 7 & 8, the kiln, hoults yard, walker road,  
newcastle, ne6 2hl. t: +44 (0)191 281 3775

london:  
the fisheries, 1 mentmore terrace, london,  
e8 3pn. t: +44 (0)203 479 2649

glasgow:  
177 w george st, glasgow metropolitan area,  
g2 2lb. t: +44 (0)141 301 1465

w: www.oobe.co.uk e: info@oobe.co.uk

Client Galliford Try  
Project Greenhead College  
Title Planting Strategy

Dwg. No.	NE8659- OOB- ZZ- 00- DR- L- 0030	Scale	1 : 500@ A2
Revision	P07	Date	February 2021