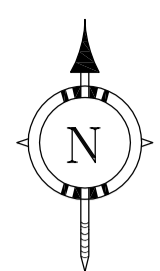
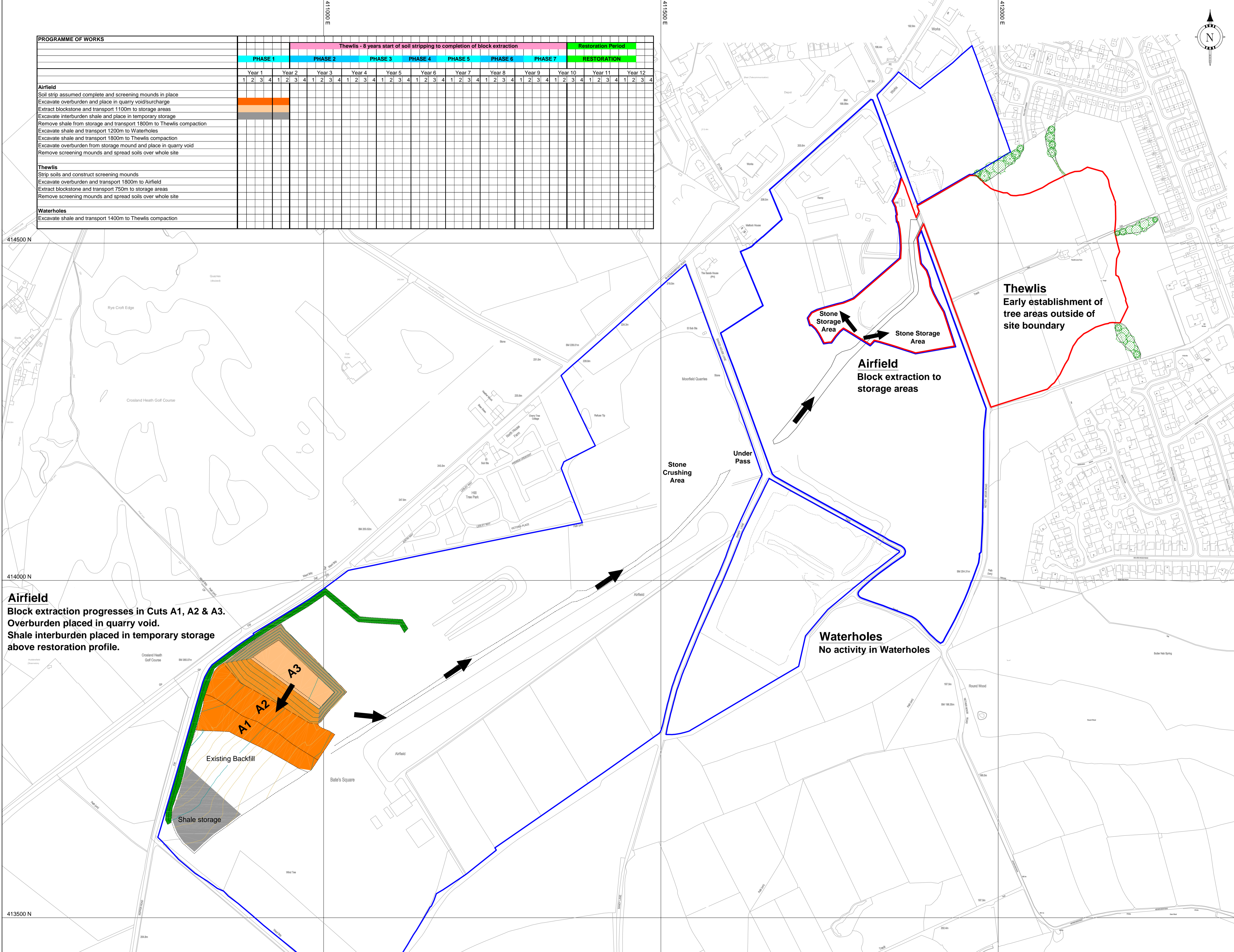


PROGRAMME OF WORKS	Thewlis - 8 years start of soil stripping to completion of block extraction												Restoration Period																						
	PHASE 1			PHASE 2			PHASE 3			PHASE 4			PHASE 5			PHASE 6			PHASE 7			RESTORATION													
	Year 1			Year 2			Year 3			Year 4			Year 5			Year 6			Year 7			Year 8			Year 9			Year 10			Year 11			Year 12	
Airfield	Soil strip assumed complete and screening mounds in place																																		
	Excavate overburden and place in quarry void/surcharge																																		
	Extract blockstone and transport 1100m to storage areas																																		
	Excavate interburden shale and place in temporary storage																																		
	Remove shale from storage and transport 1800m to Thewlis compaction																																		
	Excavate shale and transport 1200m to Waterholes																																		
	Excavate shale and transport 1800m to Thewlis compaction																																		
	Excavate overburden from storage mound and place in quarry void																																		
	Remove screening mounds and spread soils over whole site																																		
Thewlis	Strip soils and construct screening mounds																																		
	Excavate overburden and transport 1800m to Airfield																																		
	Extract blockstone and transport 750m to storage areas																																		
	Remove screening mounds and spread soils over whole site																																		
Waterholes	Excavate shale and transport 1400m to Thewlis compaction																																		



- Legend**
- Application boundary
 - Other land under the control of the Applicant
 - Traffic movement
 - Screening Mound
 - Excavation Area
 - Backfill Area
 - Shale Extraction/Storage/Compaction Area

Note
The local name Airfield or Airfield Quarry, where used, refers to Crosland Moor Quarry

Rev	Description	Date	By	Chkd



Project:
THEWLIS LANE QUARRY

Plan Title:
THEWLIS/AIRFIELD/WATERHOLES
METHOD OF WORKING - PHASE 1

Silkstone Environmental Ltd
www.silkstoneenvironmental.co.uk

7, Hall Annex, Thorncliffe Park, Chapeltown, Sheffield, S35 2PH
Tel (0114) 2573487 Fax (0114) 2573459

Project No. 10093	Dwg No. 10093/455	Rev
Date: July '12	Drawn: NC	Chkd: MB

Scale: 1:2500 @ A1
The copyright of this plan and its contents are the sole property of Silkstone Environmental Ltd and must not be copied or shown to third parties without prior consent of the Company or its clients.
Crown Copyright. All rights reserved. Licence Number 10008464