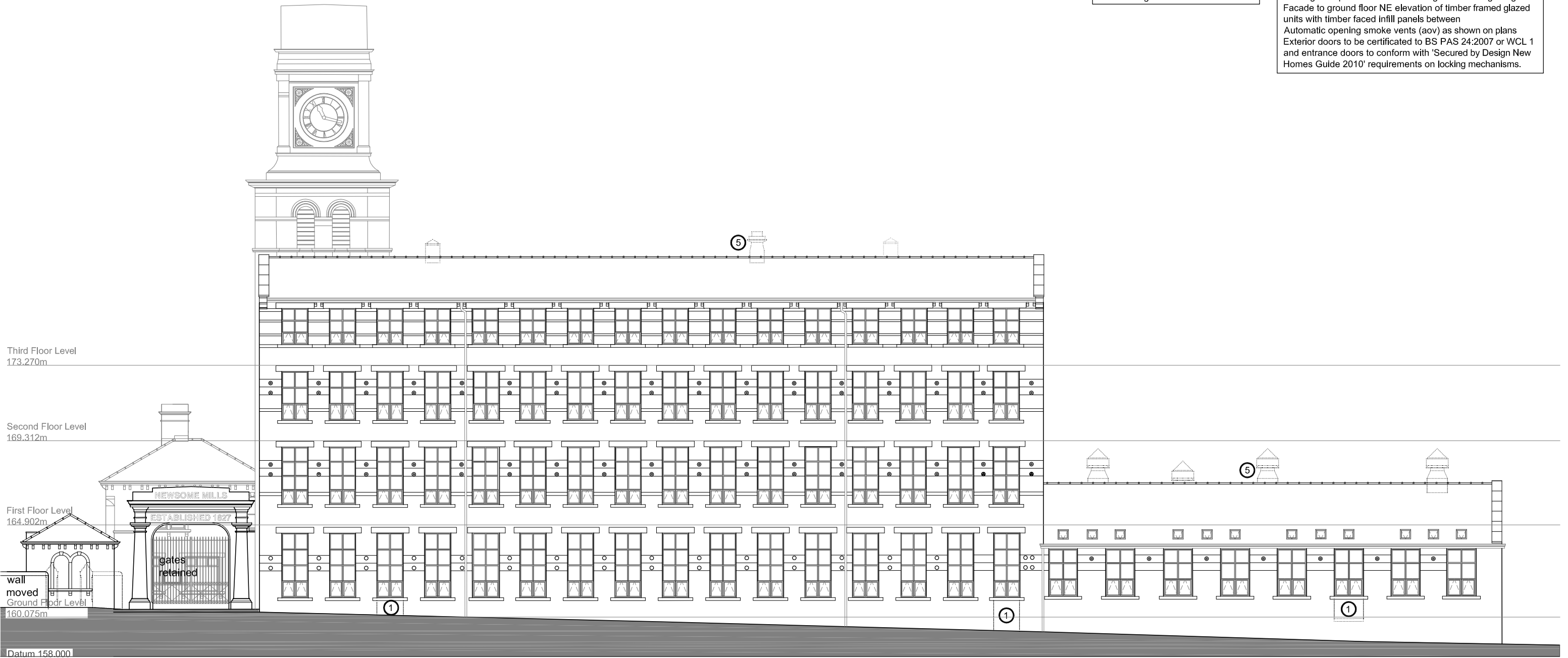


- Notes**
- ① remove door and frame, make good to stone and insert window to match existing
 - ② remove steps & make good to match existing
 - ③ reinsert window and make good to stone to match existing
 - ④ new timber framed glazed entrance door & fire exit
 - ⑤ roof vents removed and roof made good

- General**
- All work to LA approval
 Facades cleaned
 New stone work to match existing
 New skylights to be conservation type
 Roof slates reinstated/replaced to match existing
 External svp's removed
 External rwp's and guttering replaced with cast iron rainwater goods.
 Windows replaced with timber framed double glazed units
 Ground floor windows to be certificated to BS 7950:1997 or WCL1.
 Northlights replaced in timber framing and double glazing
 Facade to ground floor NE elevation of timber framed glazed units with timber faced infill panels between
 Automatic opening smoke vents (aov) as shown on plans
 Exterior doors to be certificated to BS PAS 24:2007 or WCL 1 and entrance doors to conform with 'Secured by Design New Homes Guide 2010' requirements on locking mechanisms.



South East (Ruth Street) Elevation