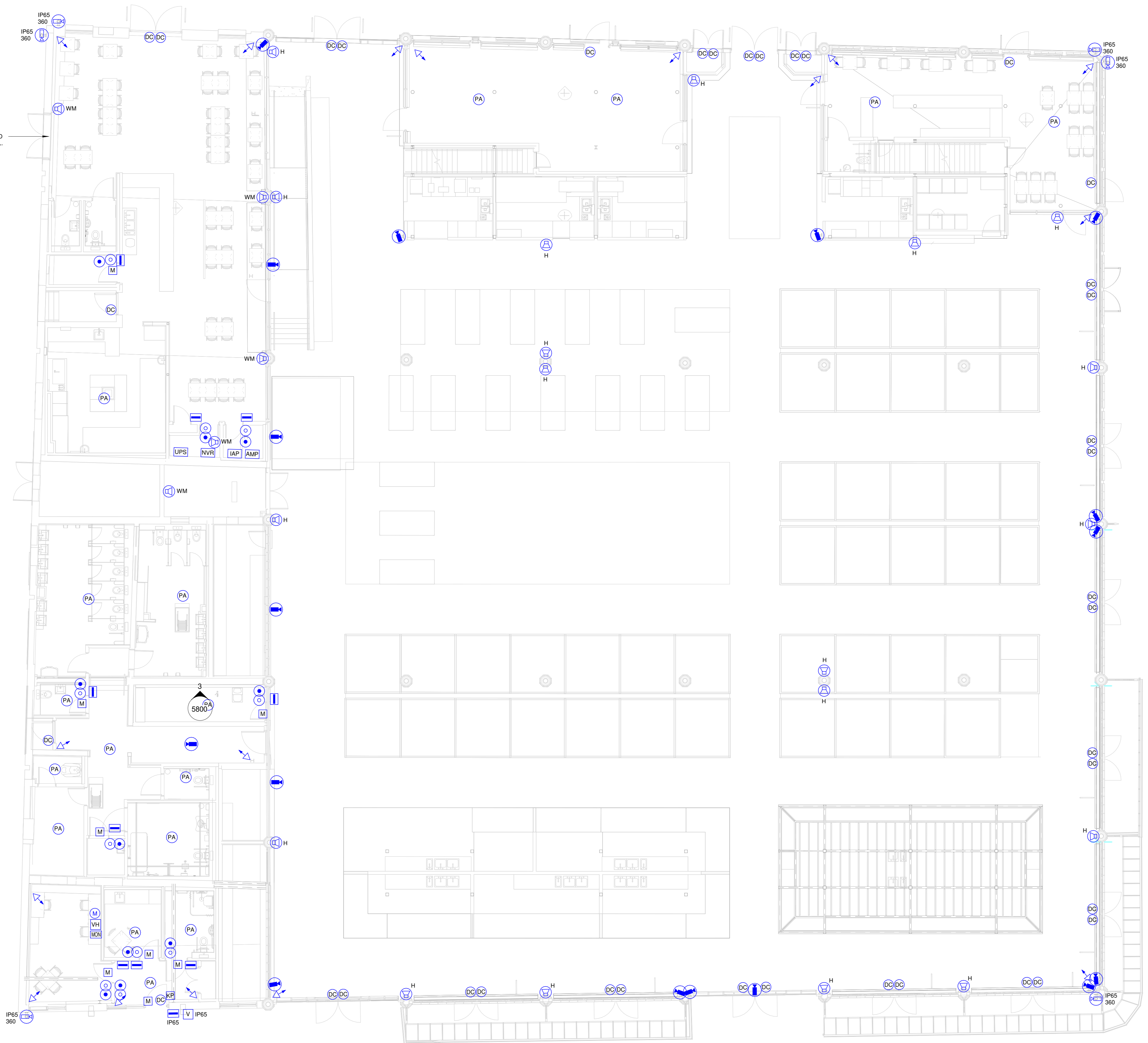


**SAFETY, HEALTH & ENVIRONMENTAL INFORMATION**  
Refer to the project specific risk assessment and design criteria for the MSE services installation. The installing contractor shall prepare method statements for the installation works and agree all works in advance with the main contractor.

- GENERAL NOTES**
- THIS DRAWING SHALL BE READ IN CONJUNCTION WITH ALL ASSOCIATED SERVICES DRAWINGS, ARCHITECTS AND STRUCTURAL DRAWINGS TOGETHER WITH THE SCHEMATIC DRAWINGS AND ALL MECHANICAL & ELECTRICAL SPECIFICATIONS
  - ALL SERVICES INSTALLATIONS SHALL BE CO-ORDINATED AND FULLY INTEGRATED WITH THE MECHANICAL & ELECTRICAL SERVICES, ARCHITECTURAL FEATURES, REFRIGERATION PLANT, STRUCTURAL ELEMENTS etc.
  - THE SERVICES CONTRACTORS SHALL FAMILIARISE THEMSELVES WITH THE MECHANICAL & ELECTRICAL SERVICES, ARCHITECTURAL FEATURES, REFRIGERATION PLANT, STRUCTURAL ELEMENTS etc.
  - THE INSTALLING SUB-CONTRACTOR SHALL ISSUE FULL "WORKING DRAWINGS" IN LINE WITH THE SPECIFICATION PROVIDED. THE "WORKING DRAWINGS" SHALL BE ISSUED TO ALL DESIGN TEAM MEMBERS FOR THEIR COMMENT PRIOR TO INSTALLATION. THE INSTALLATION AND CO-ORDINATION OF SERVICES WITH OTHER SERVICES, THIRD PARTY SUPPLIERS AND THE BUILDING FABRIC IS THE RESPONSIBILITY OF THE INSTALLING SUB-CONTRACTOR.
  - THE ELECTRICAL INSTALLATION SHALL BE INSTALLED IN ACCORDANCE WITH THE BS 7671 WIRING REGULATIONS BS 7671 18TH EDITION + A2.

- SECURITY NOTES**
- THE ACCESS CONTROL SYSTEM WILL BE NETWORKED WITH THE COUNCIL'S CENTRALY MANAGED SYSTEM. A PACS12 SYSTEM WILL BE USED THROUGHOUT AND PAIRED WITH HD IC CLASS CARD READERS OPERATING MIFAREWISAND PROTOCOLS.
  - ACCESS TO ALL NONE PUBLIC AREAS SHALL BE CONTROLLED BY CARD TO RECORD WHO HAS ENTERED WHAT AREAS AND WHAT TIMES. CARDS SHALL BE PROGRAMMED TO RESTRICT ACCESS TO CERTAIN ROOMS.
  - CCTV QUANTITIES HAVE BEEN DEVELOPED FROM STAGE 3 ALLOWANCE AND POSITIONED AS APPROPRIATELY TO SUIT LAYOUT. ARCHITECT TO CONFIRM FINAL POSITIONS AND QUANTITIES.
  - PA SPEAKER LOCATIONS, QUANTITIES AND TYPES HAVE BEEN IDENTIFIED BY PA SPECIALIST DATAFLOW. ARCHITECT TO CONFIRM FINAL POSITIONS AND TYPES.
  - THE CONTRACTOR SHALL MAKE ALLOWANCES FOR SECONDARY CONTAINMENT TO FINAL ACCESSORIES AND EQUIPMENT. CONSIDERATION SHALL BE GIVEN TO HERITAGE AREAS WITHIN THE MARKET HALL WHERE STANDARD PRACTICES FOR SECONDARY CONDUITS AND FIXINGS ARE NOT PRACTICAL.
  - THE CONTRACTOR SHALL UTILISE SECONDARY CONTAINMENT IN THE FORM OF MILLION BOXES ON PROPOSED CURTAIN WALLING PROMINENCY WHERE PRACTICAL. TO CONCEAL WIRING TO FINAL CONNECTION POINTS. FINAL CONNECTION POINTS SHALL BE APPROVED BY GREIG & STEPHENSON ARCHITECTS.
  - THE CONTRACTOR SHALL NOT DRILL DIRECTLY INTO HERITAGE IRON COLUMNS FOR FIXING OF SECONDARY CONTAINMENT. ALTERNATIVE FIXING METHODS E.G. CLAMPS SHALL BE PROPOSED FOR APPROVAL PRIOR TO PROCUREMENT / INSTALLATION.

- SECURITY LEGEND**
- CONCEPT PRO CP-HS0200-IPSM PTZ CCTV CAMERA
  - CONCEPT PRO CVPS0200-IPSM Z FIXED CCTV CAMERA
  - DOOR CONTACT FOR ALARMS
  - IP65 EXTERNALLY MOUNTED IP65 RATED MAGLOCK
  - PUSH TO EXIT BUTTON
  - CARD READER
  - EMERGENCY GREEN BREAKGLASS
  - DUAL TECHNOLOGY MOVEMENT DETECTOR
  - INTRUDER ALARM PANEL
  - KEYPAD
  - INTERNAL / EXTERNAL SOUNDER / BEACON BOX
  - AUDIO INTERCOM UNIT
  - NETWORK VIDEO HEADEND RECORDER
  - CCTV MONITOR
  - NVR UPS
  - PA AMPLIFIER
  - MICROPHONE
  - VIDEO INTERCOM
  - VIDEO INTERCOM HANDSET
  - CEILING MOUNTED PA SPEAKER
  - WALL MOUNTED PA SPEAKER
  - WALL MOUNTED HORN PA SPEAKER



1 Security & Public Address Layout  
1 : 100

P08	COMMENTS INCORPORATED	SS	01.05.26
P07	LATEST MODEL COORDINATION	SP	03.02.26
P06	COMMENTS INCORPORATED	SS	23.01.26
P05	COMMENTS INCORPORATED	SS	12.01.26
P04	COMMENTS INCORPORATED	SS	12.12.25
P03	COMMENTS INCORPORATED	SS	14.11.25
P02	STAGE 4 PRELIMINARY ISSUE	SS	31.10.25
P01	STAGE 3 VE ISSUE	SP	07.07.25
REV	DESCRIPTION	BY	DATE

**KAIZEN**  
Consulting Engineers  
www.kaizen-ce.com e: info@kaizen-ce.com

CLIENT

**WILLMOTT DIXON**

ARCHITECT **Greig & Stephenson** Architects

PROJECT **HUDDERSFIELD MARKETS**

DRAWING TITLE **ELECTRICAL SERVICES SECURITY & PA LAYOUT LEVEL 00 MAIN MARKET**

CHECKED	DATE	DRAWN	SCALE
SS	07/07/25	PR	1:100 @ A0

**PRELIMINARY**

DRAWING NUMBER: **HMH-KAI-MH-00-D-E-6800** STATUS: **REV S4 P08**