

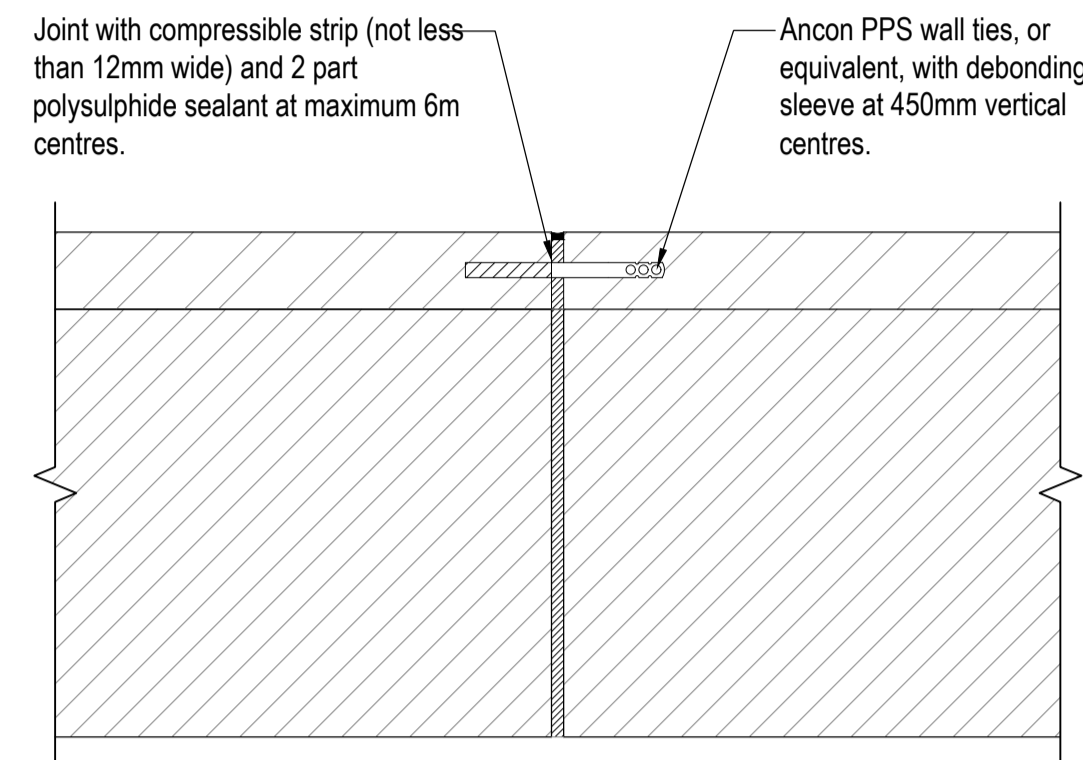
NOTES

- This drawing is to be read in conjunction with all relevant architects drawings as well as all relevant engineering drawings for each specific job.
- Masonry Retaining Wall Notes:
 - Mortar for retaining wall masonry to be group (ii) to BS 5628 and built in English bond.
 - Retaining wall to be cast on well rolled crushed stone on well rolled existing bearing material with a minimum bearing capacity of 75kN/m²
 - All mesh in retaining wall base to be deformed Type 2, high yield steel to BS 4483.
 - Masonry to have a minimum density of at least 1800kg/m³ and be frost resistant and suitable for use below ground/
 - Maximum surcharge behind wall to be 5kN/m², i.e garden or domestic driveway loading. For more onerous loading conditions, i.e highway retaining, consult Eastwood & Partners.
 - Movement joints to be provided in walls at maximum 6m centres for brick and stone facings.

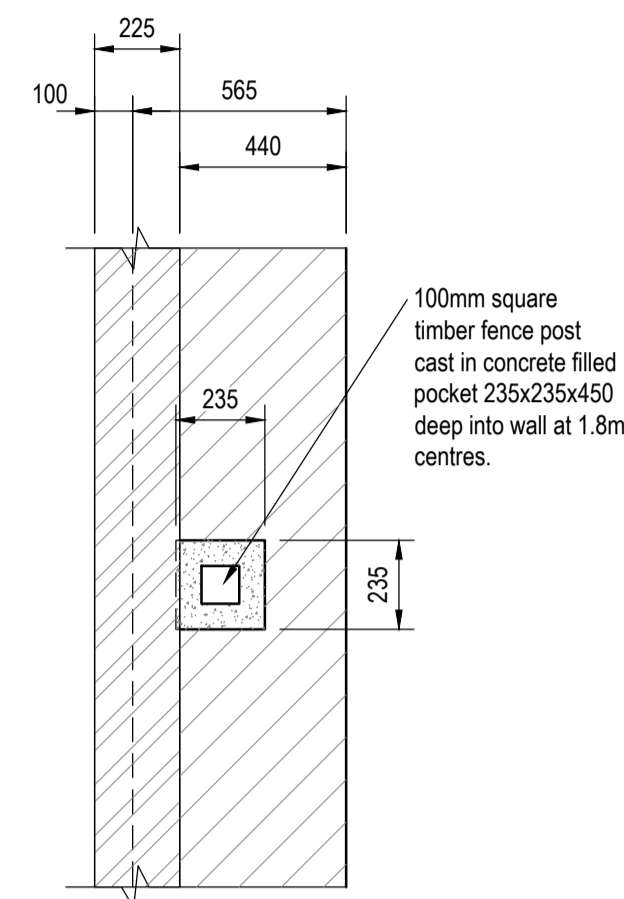
The designs assume that ground conditions will comprise natural ground or engineered / well compacted made ground capable of the safe ground bearing pressures stated in the notes.

These details may not be suitable for all ground conditions. The Engineer is to be consulted to confirm that the designs are appropriate on a site specific basis.

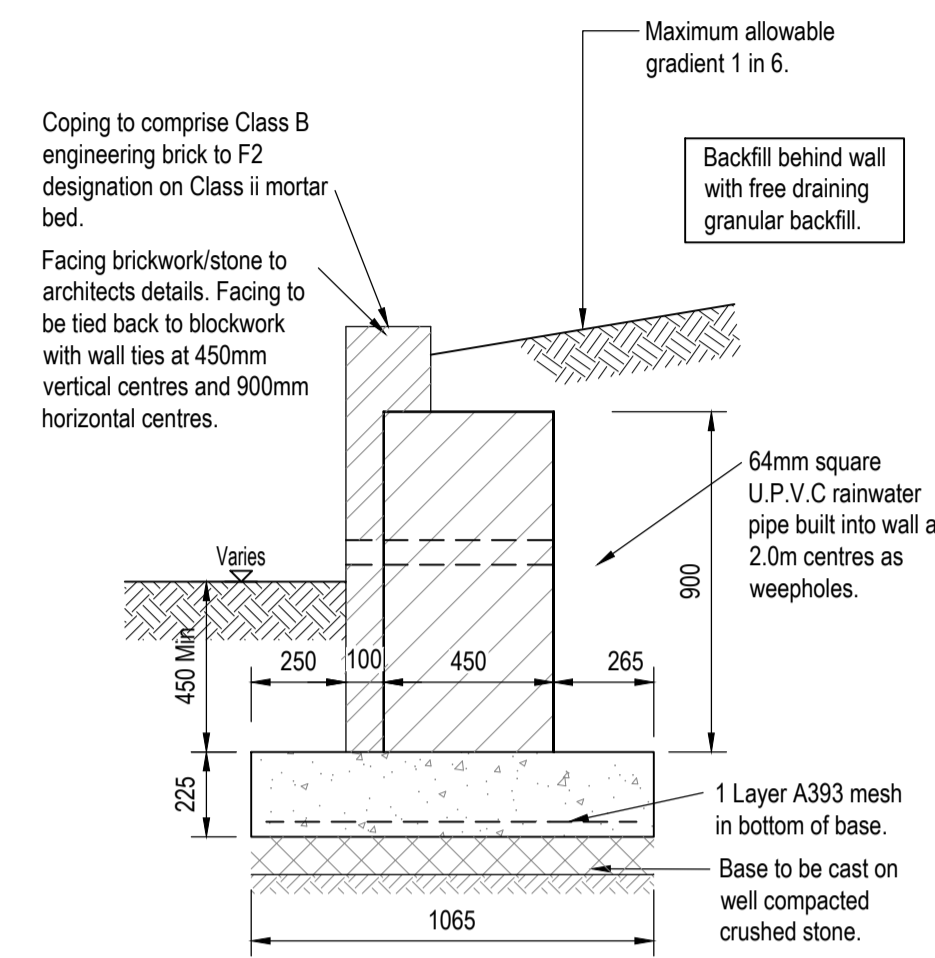
NOTE: Screen fences have been designed for a design wind load of 1kN/m² which relates to inland and sheltered locations below 150m altitude and away from escarpments. For sites or locations more onerous such as open country, coastal locations or higher altitudes consult the engineers.



MOVEMENT JOINT
(SCALE 1:10)

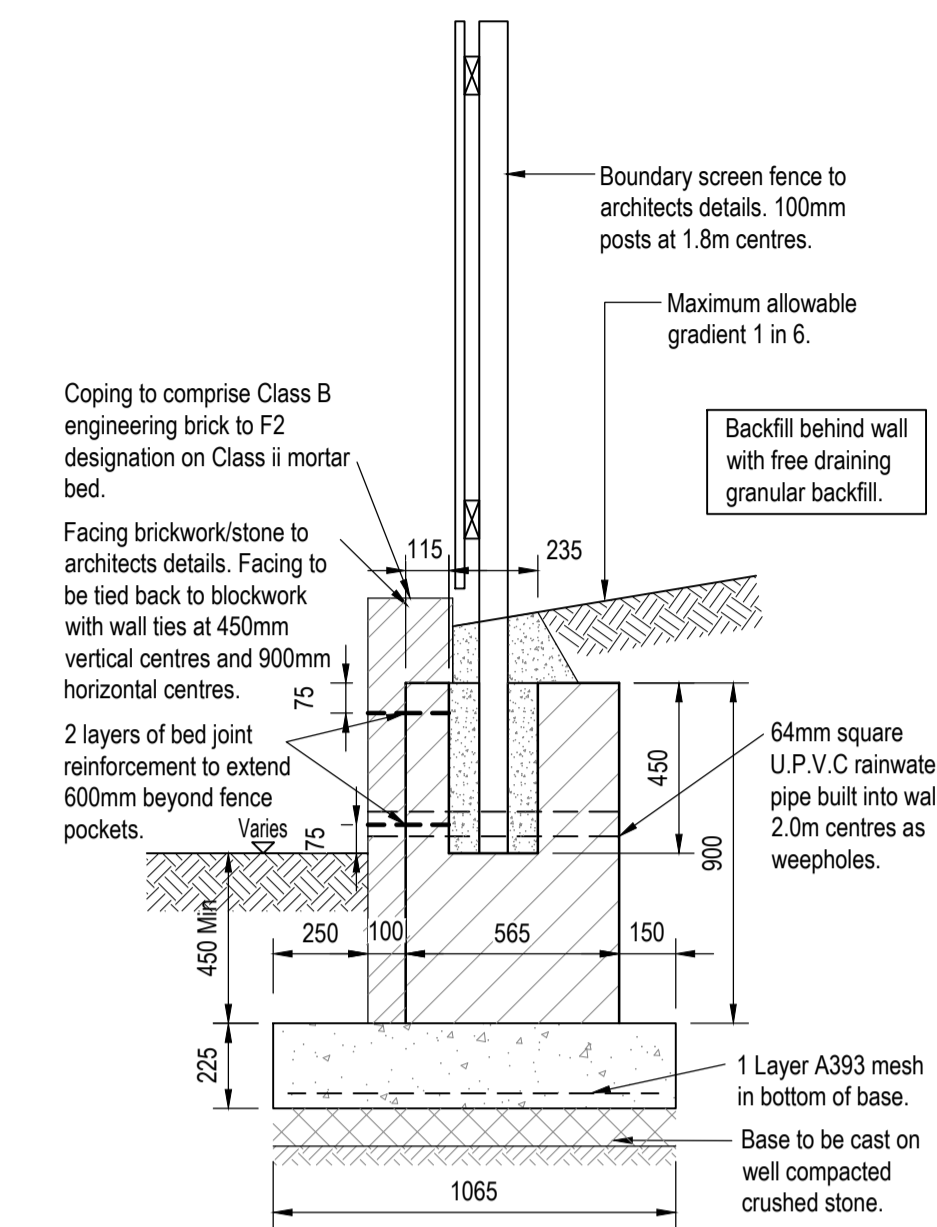


PLAN ON FENCE POST LOCATION POCKET



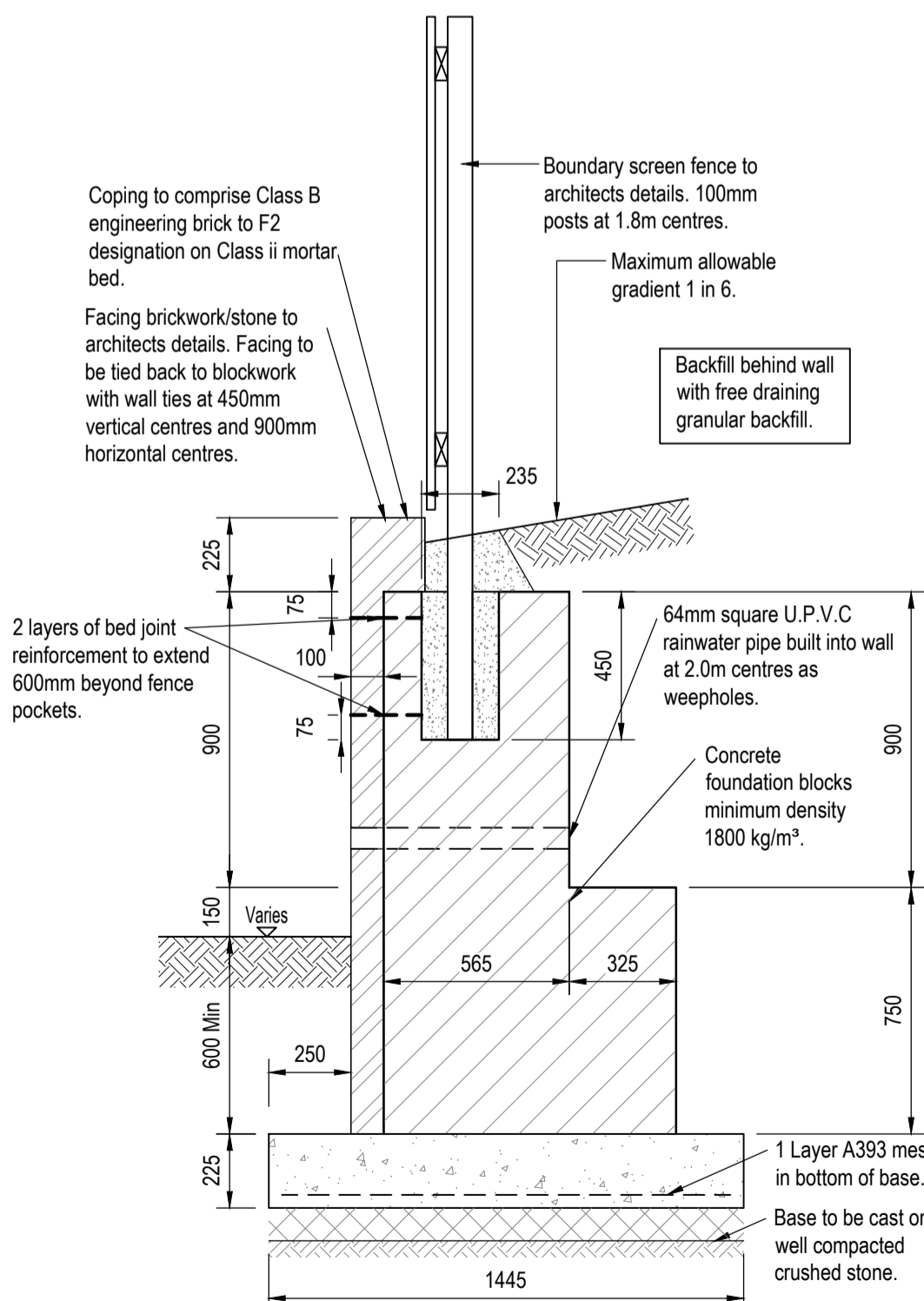
MASONRY RETAINING WALL WITH NO FENCE OR GUARD RAIL

Retaining strictly up to 0.6m.



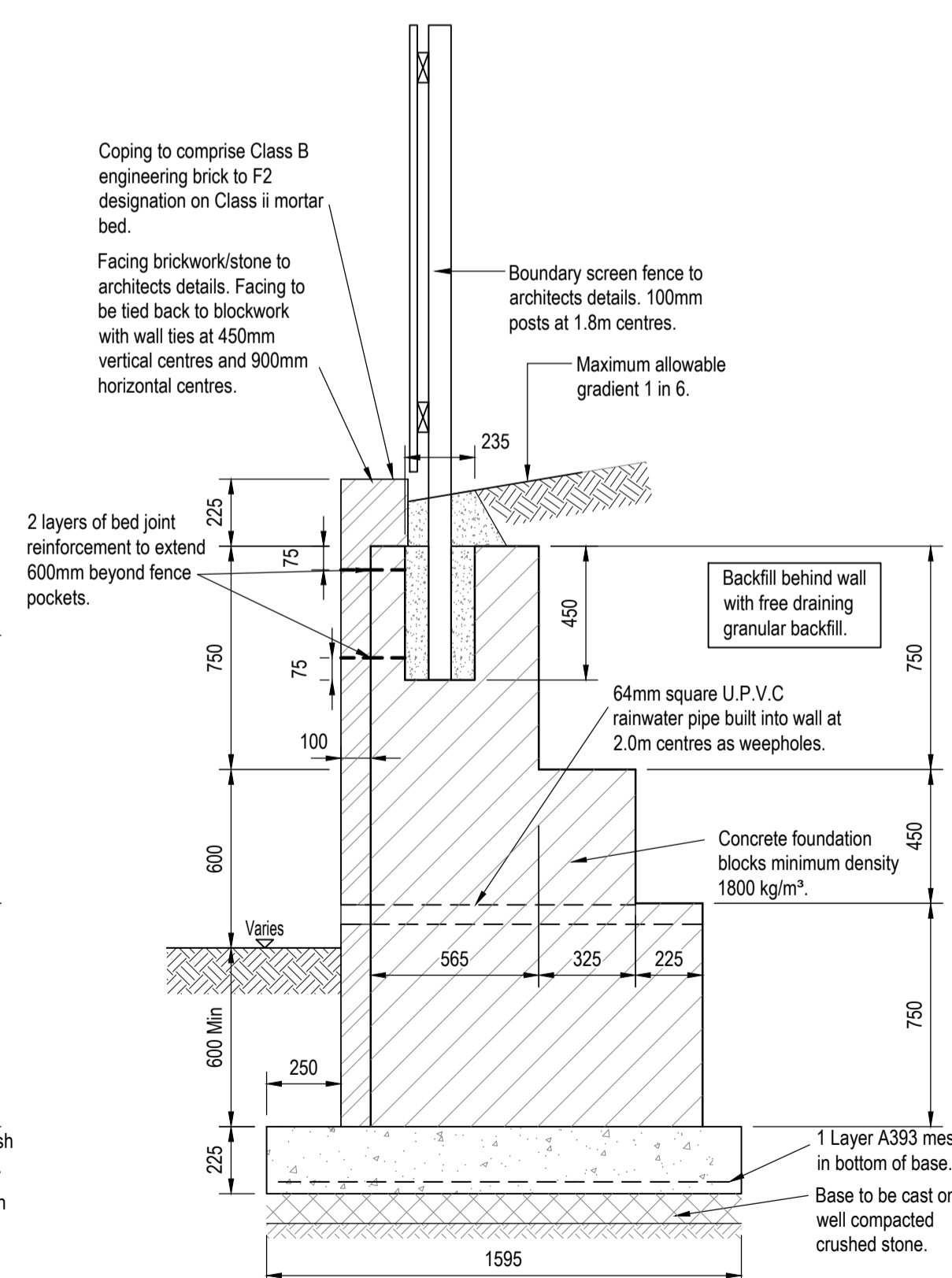
MASONRY RETAINING WALL

Retaining up to 0.6m.



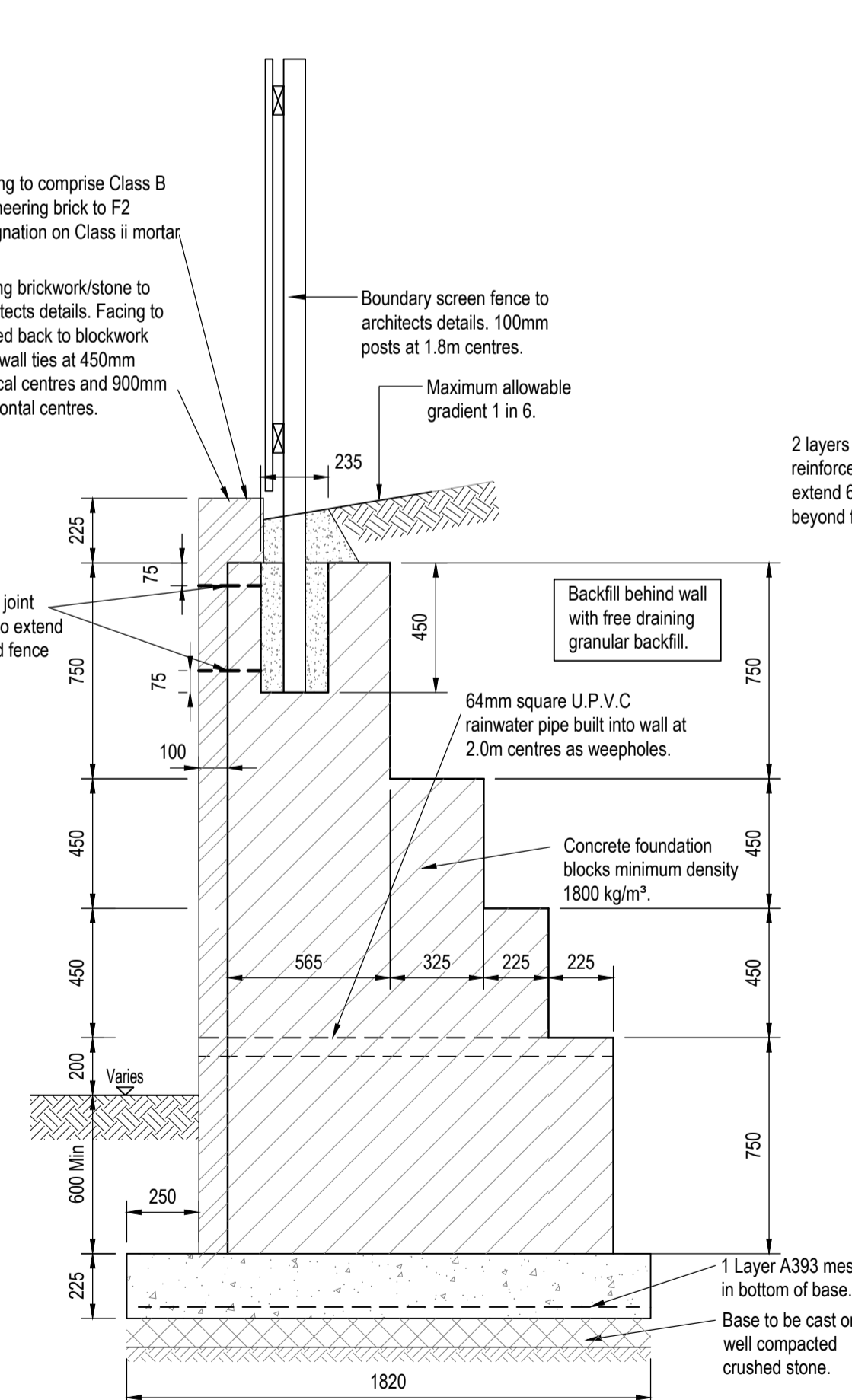
MASONRY RETAINING WALL

Retaining up to 1.2m.



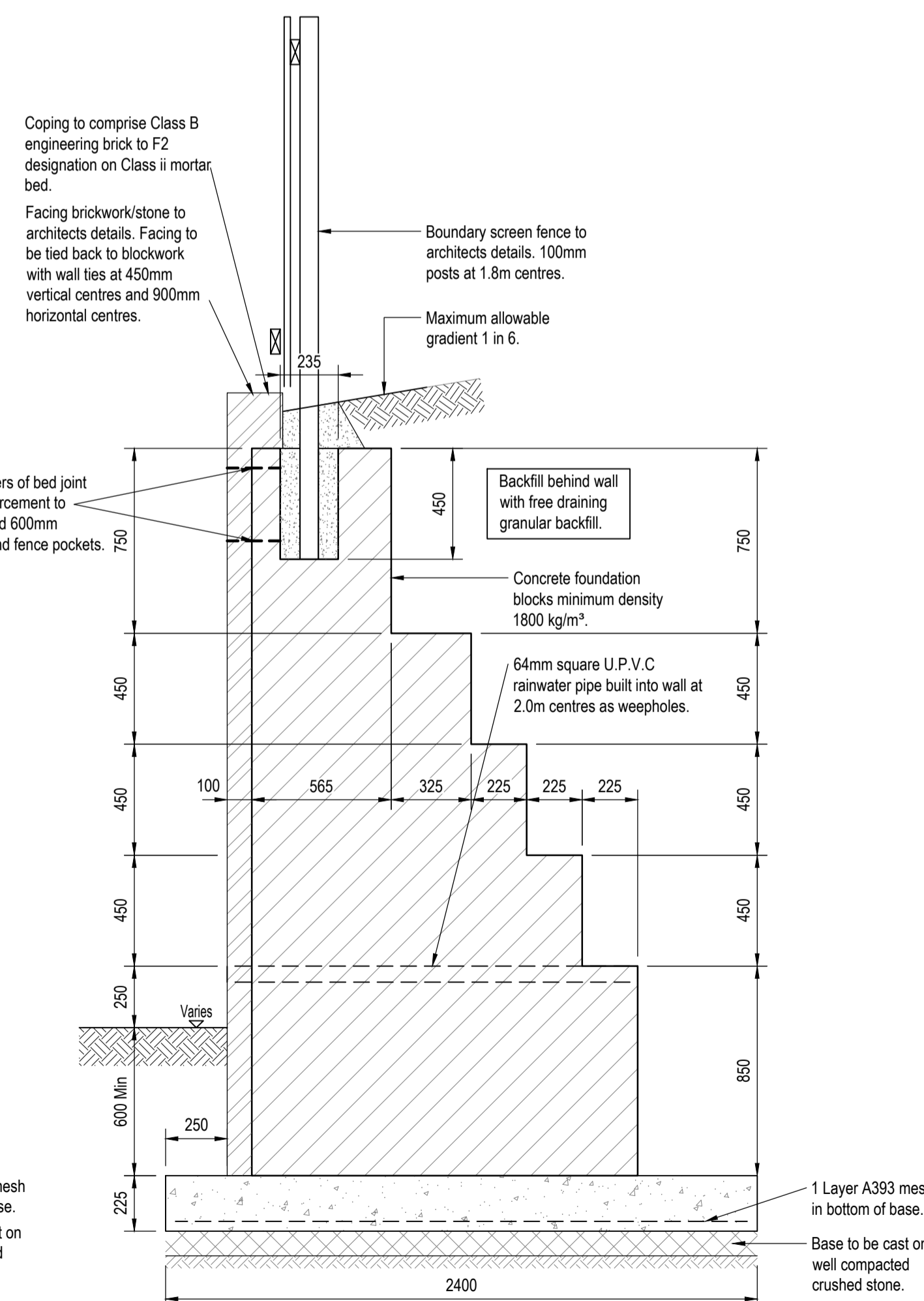
MASONRY RETAINING WALL

Retaining up to 1.6m.



MASONRY RETAINING WALL

Retaining up to 2.0m.



MASONRY RETAINING WALL

Retaining up to 2.5m.

C	2.5m retaining wall detail amended.	JB	CH	28.01.22
B	Masonry retaining wall detail, retaining up to 2.5m added.	JB	CH	27.01.22
A	First Issue.			
REV	DESCRIPTION	SIG	CHK	DATE

HARRON HOMES

SECOND LANE, WICKERSLEY

MASONRY RETAINING WALL DETAILS

Eastwood & Partners
CONSULTING ENGINEERS

St. Andrew's House
23 Kingfield Road
Sheffield
S11 9AS
Tel 0114 255 4554
Fax 0114 255 4330

mail@eastwoodandpartners.com
www.eastwoodandpartners.com

SCALE WHEN PLOTTED AT A1		DRAWING STATUS	
1:20		CONSTRUCTION	
DRAWN	CHECKED	DATE	DRAWING NUMBER
RJ	PR	21.01.19	39971/027
REV			C