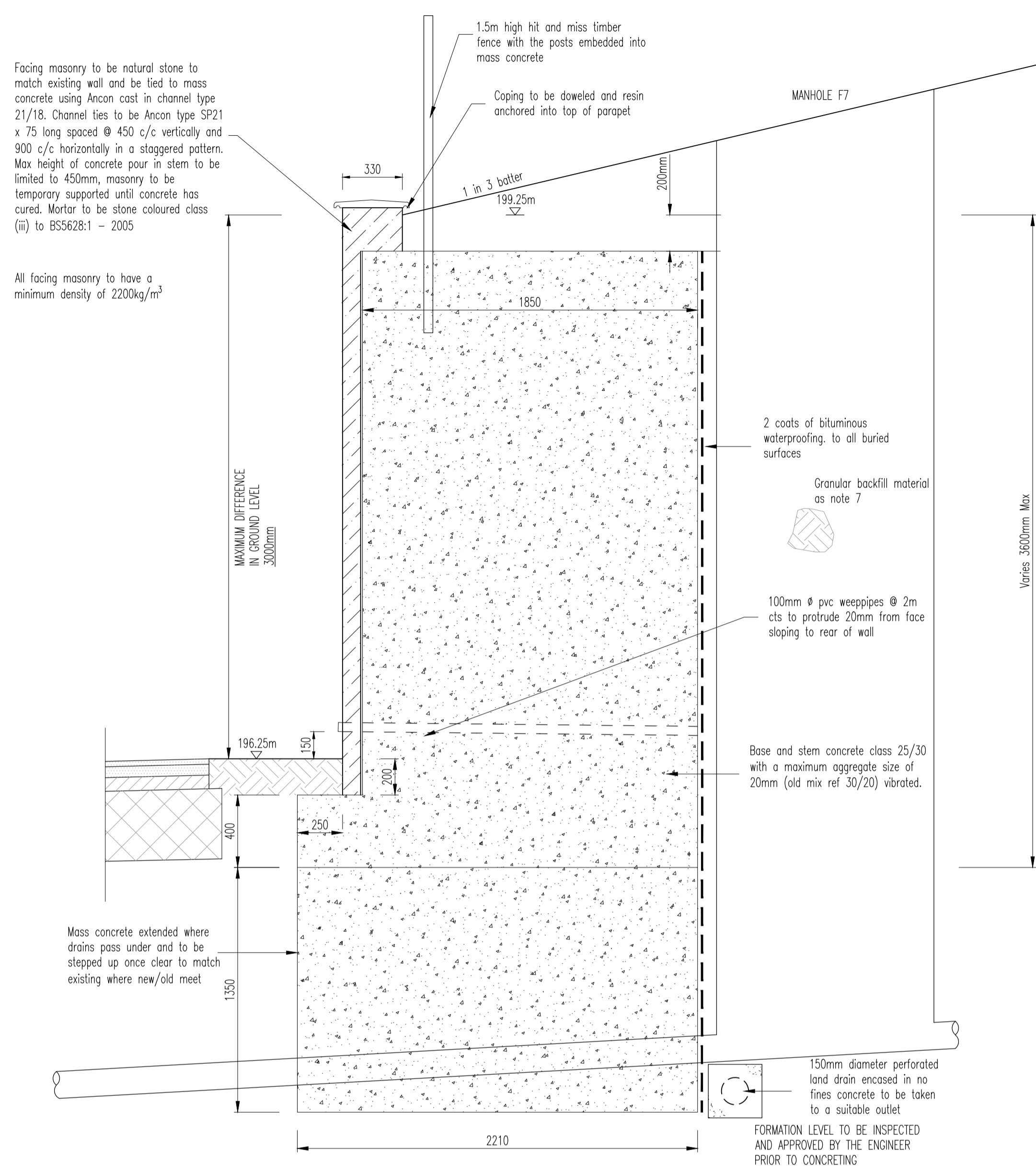


N O T E S

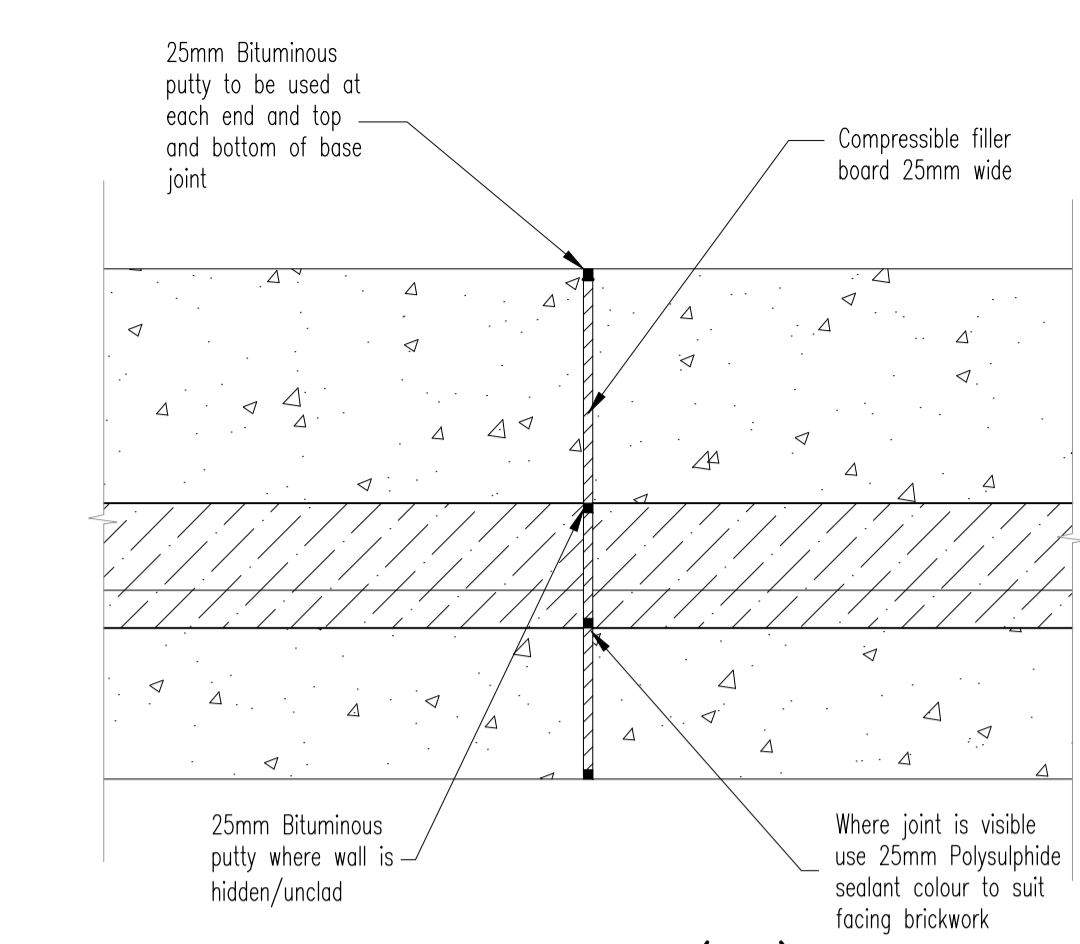
1. This drawing is to be read in conjunction with all relevant drawings, details and specifications prepared by ARP Associates for this project.
2. Do not scale from this drawing use figured dimensions only.
3. All dimensions are in millimetres, UNO. All levels are in metres AOD UNO. All levels and dimensions are to be confirmed at site prior to construction.
4. All concrete to be in accordance with BS EN 206-1:2000, reinforcement to BS 4449:2005, Reinforcing mesh to be in accordance with BS4483:2005.
5. Concrete for highway retaining walls to be Grade C25/30.
6. Foundations have been designed assuming a ground bearing pressure of 100kN/m² on firm slightly gravelly, sandy Clay. If ground capable of sustaining this pressure is not found at depth shown, excavation should continue until a suitable strata is encountered.
7. Selected well graded granular backfill to be type 6N in accordance with DOT specification for Highway works series 600, Class 613.

KEY

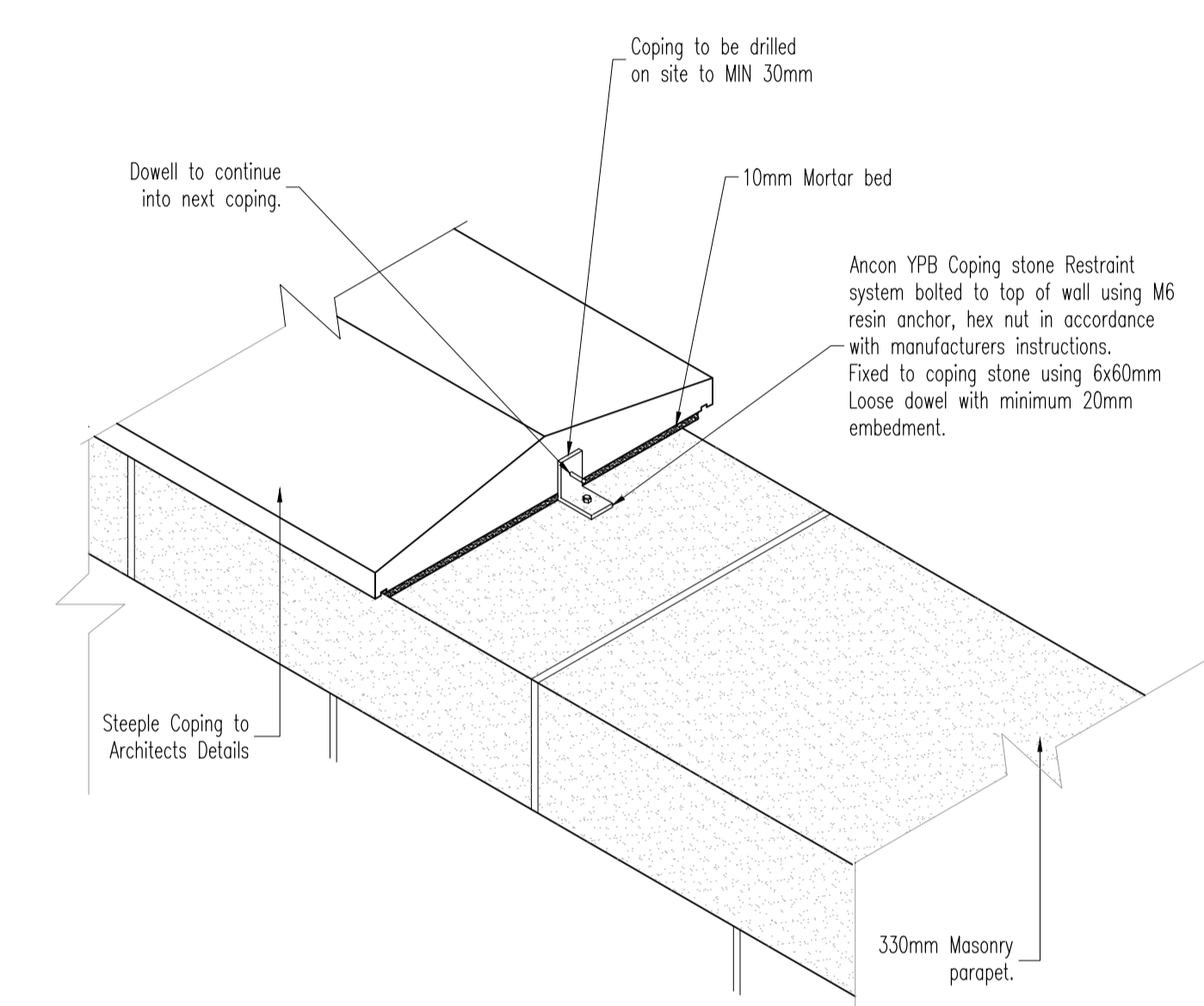
- Existing ground level
- Proposed ground level



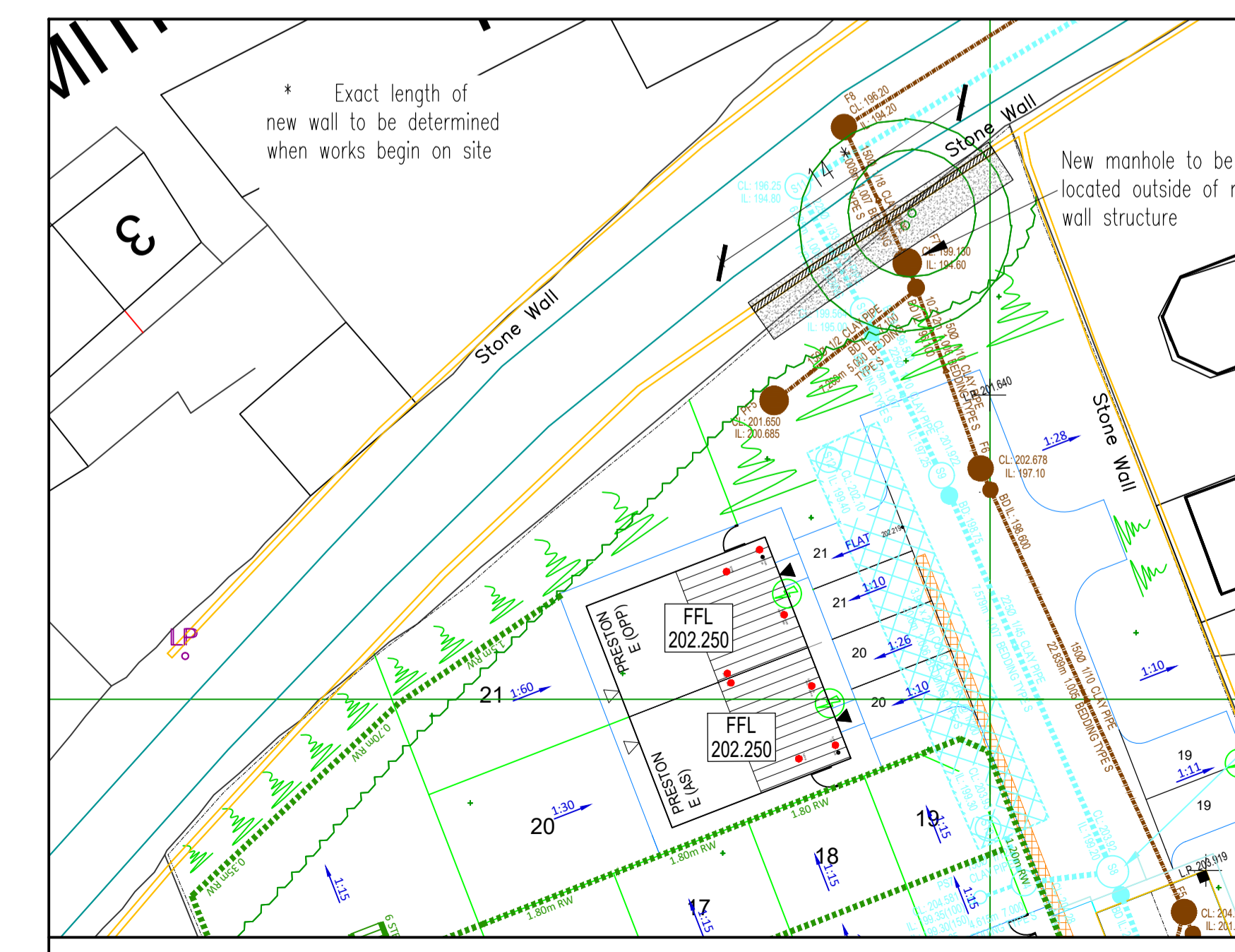
TYPICAL RETAINING WALL SECTION
MAX 3.8m RETAINED HEIGHT
(1:20)



JOINT DETAIL (C.J.)
(1:20)



COPING RESTRAINT DETAIL
(1:10)



PLAN ON HIGHWAY RETAINING WALL
(1:250)

Rev	By	Date	Revision	Chk	Appd
/	DPB	12.03.25	Issued for Information		DPB

ARP ASSOCIATES
Chartered Consulting Engineers

Northwest House • 5 & 6 Northwest Business Park • Servia Hill, Leeds • LS6 2QH
0113 245 8498 • 0113 244 3864 • leeds@arpassociates.co.uk • www.arpassociates.co.uk
ARP Associates is a trading division of ARP Geotechnical Ltd, a company registered in England and Wales with company number 3773811, whose registered office is at 5 & 6 Northwest Business Park, Servia Hill, Leeds LS6 2QH

TITLE PRIVATE RETAINING WALL REPLACEMENT ADJACENT DOBB TOP ROAD

PROJECT BANKFIELD DRIVE, HOLMBRIDGE

CLIENT ORION HOMES

DRAWING STATUS PRELIMINARY

Scale	Date	Drawn	Chk.	Rev
AS SHOWN @ A1	MAR 25	DPB	DPB	

Orig. No. 119/188/1000