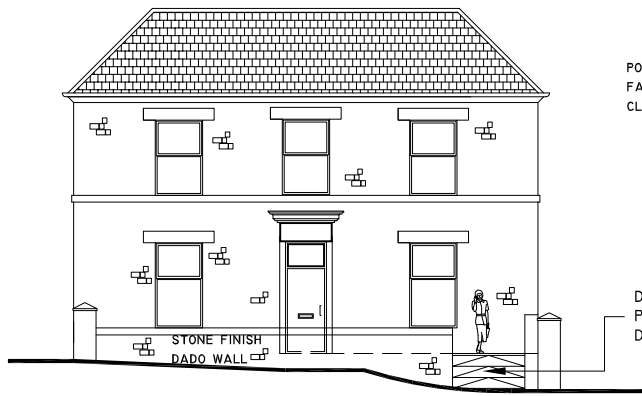
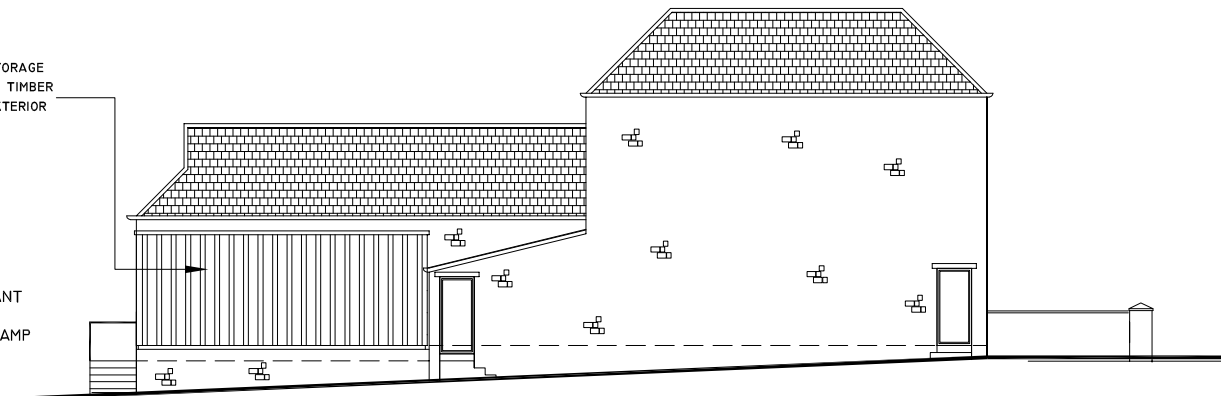


Do Not Scale

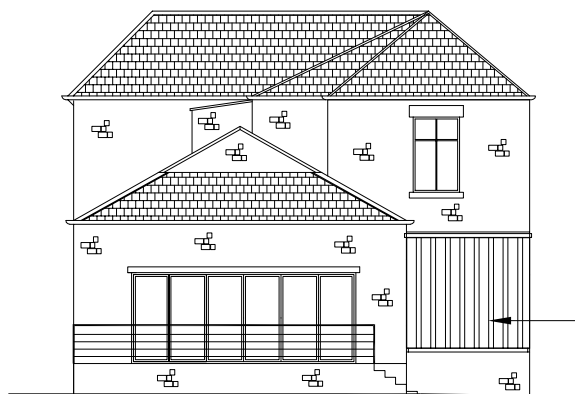
GENERAL NOTES



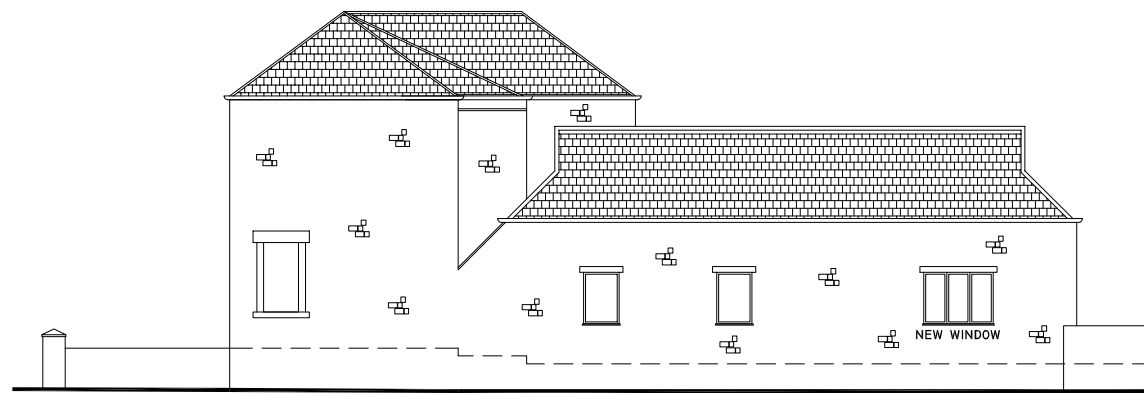
PROPOSED FRONT ELEV A
SCALE 1:200



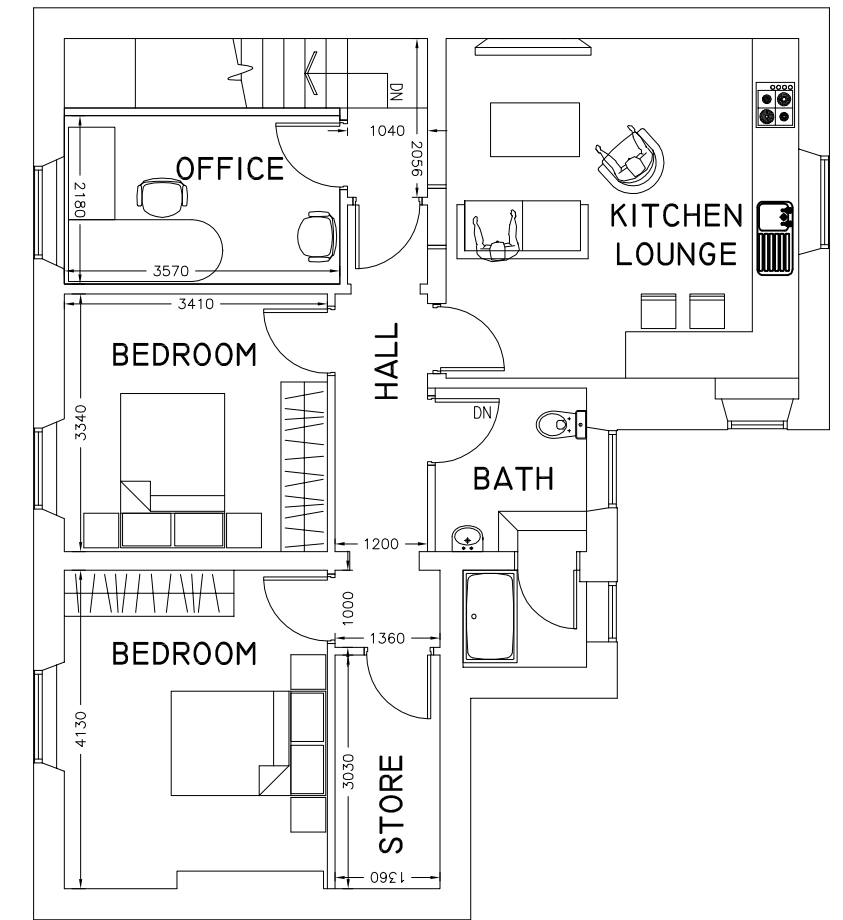
PROPOSED SIDE ELEVATION B
SCALE 1:200



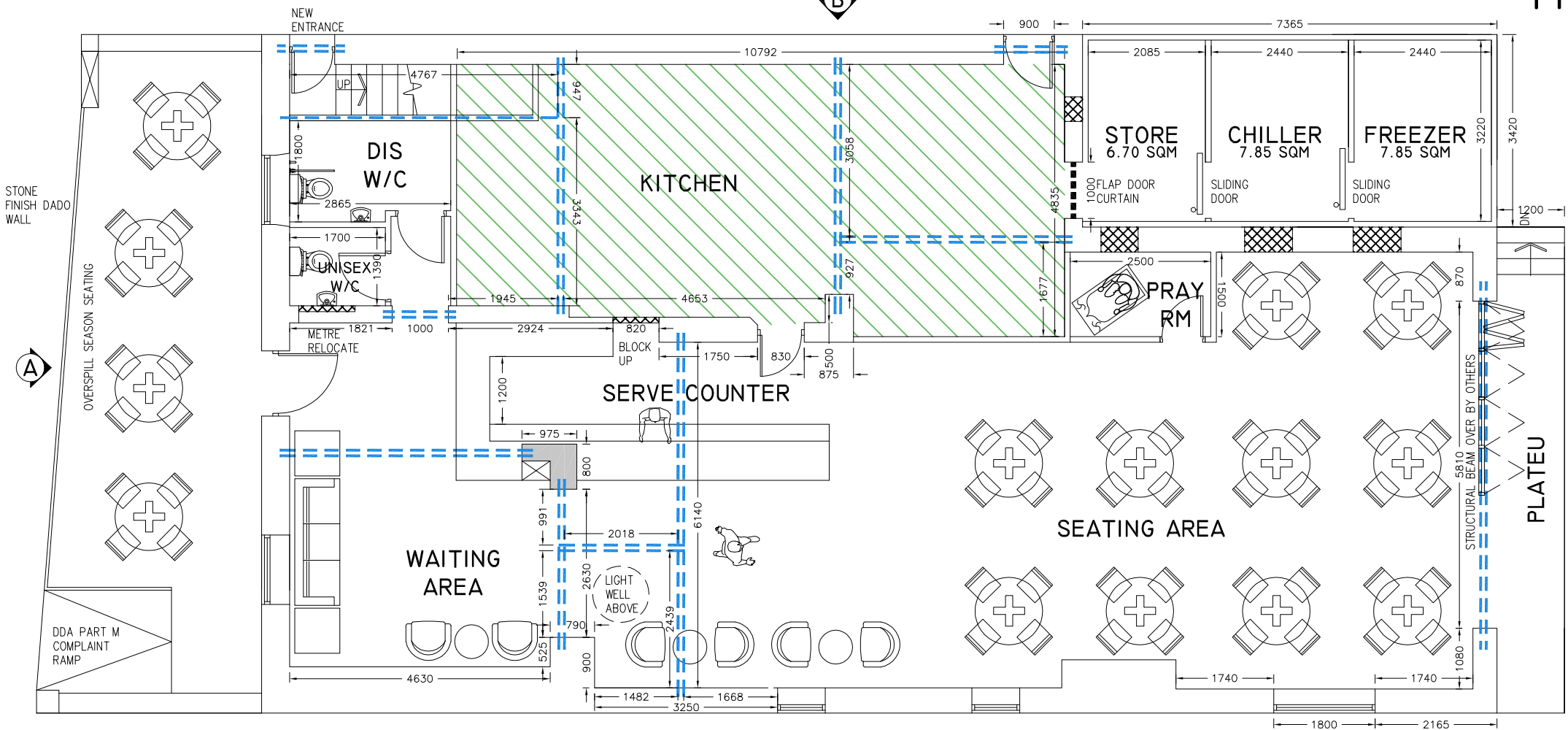
PROPOSED REAR ELEV C
SCALE 1:200



PROPOSED SIDE ELEVATION D
SCALE 1:200



PROPOSED FIRST FLOOR PLAN



PROPOSED GROUND FLOOR PLAN

REV A: 31-07-2025
CANOPY AWNINGS, DOOR AND RAILINGS TO FRONT REMOVED. SMALL DADO WALL TO FRONT ADDED TO EXTERNAL SEATING AREA 2 NUMBER SIDE PILLARS RETAINED. SHOP FRONT MODIFIED WITH SIGNAGE TO SUIT. DRAWINGS UPDATED FOLLOWING RECEIPT OF EMAIL FROM PLANNING OFFICER NINA SAYERS ON 24-07-2025.

REV B: 11-09-2025
PROPOSED FRONT SHOP REMOVED AND REINSTATED BACK TO ORIGINAL SYMMETRY OF BUILDING FOLLOWING EMAIL RECEIVED FROM PLANNING OFFICER NINA SAYERS ON 11-09-2025. DRAWING UPDATED TO REFLECT CHANGES.

PLANNING		
Date	Revision	Ref
E K D		
ESKHANZ DESIGN planning design project management		
61 Princeville St, Bradford West Yorkshire, BD7 2AG T. 07967 979977		
Project PROPOSED SINGLE STOREY STORAGE UNIT TO SIDE OF PROPERTY AND INSTALL OF SHOP FRONT WITH CANOPY STRUCTURE AND INTERNAL AMENDS AT TEXTILE CHAMBERS, HICK LANE, BATLEY WF17 5HW		
Title PROPOSED FLOOR PLANS AND ELEVATIONS (APPROVED)		
Scale 1:100 @ A3	Drawn	Checked
Date OCT 24	Status PLANNING	
Drg. No. 24-057-02		Rev B