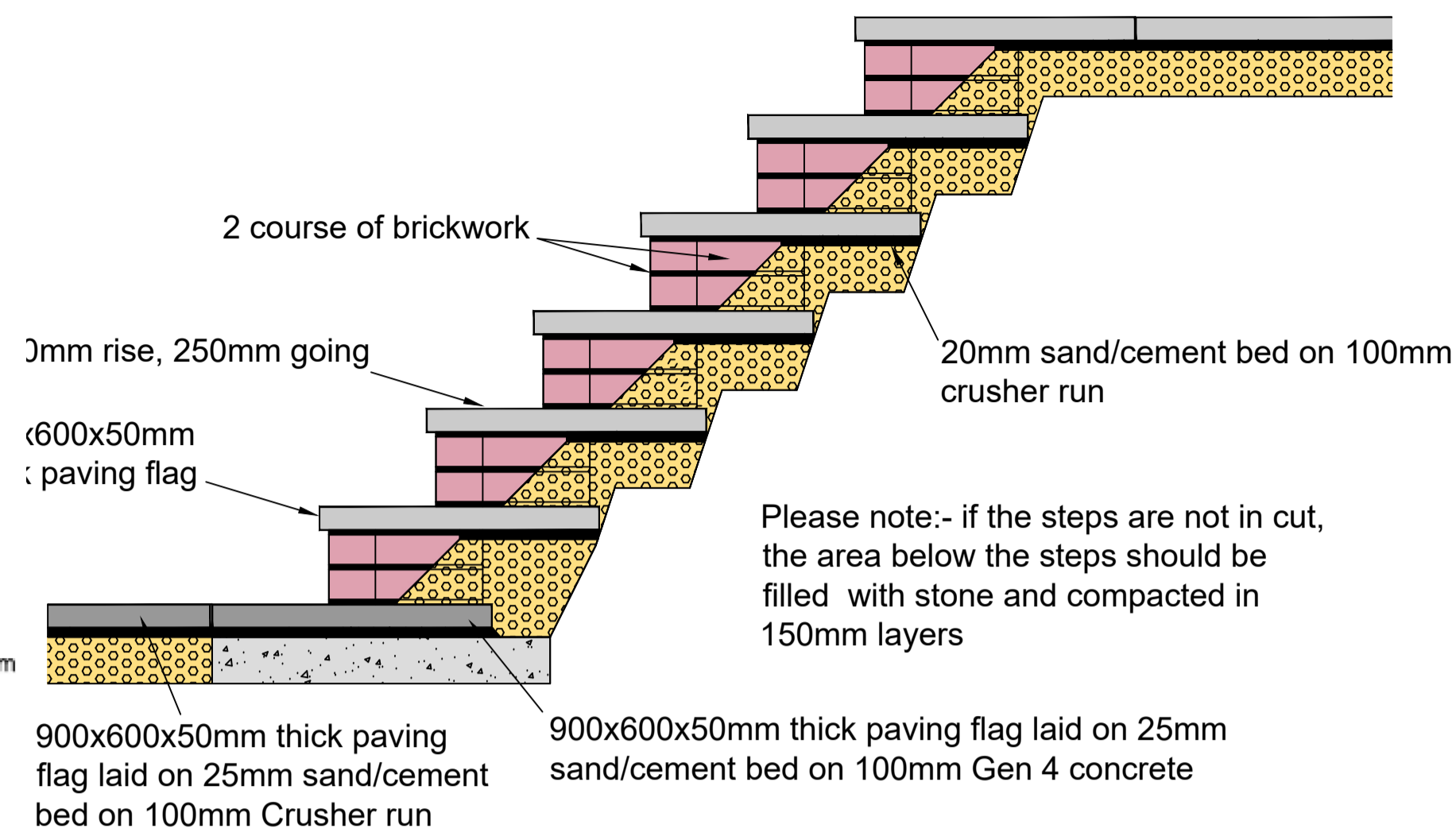


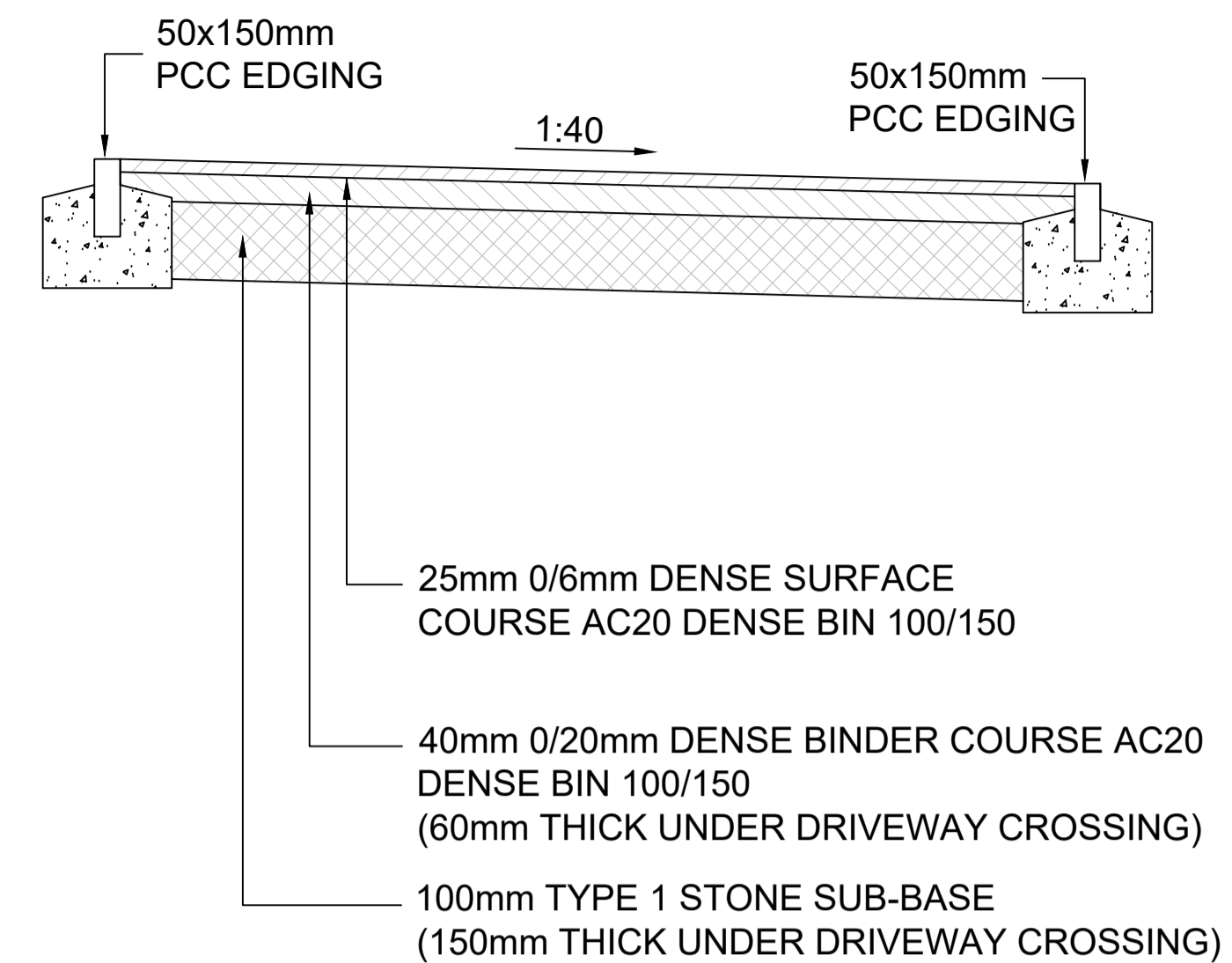
**RETAINING WALL DETAIL**

**Masonry Retaining Wall to comprise:**

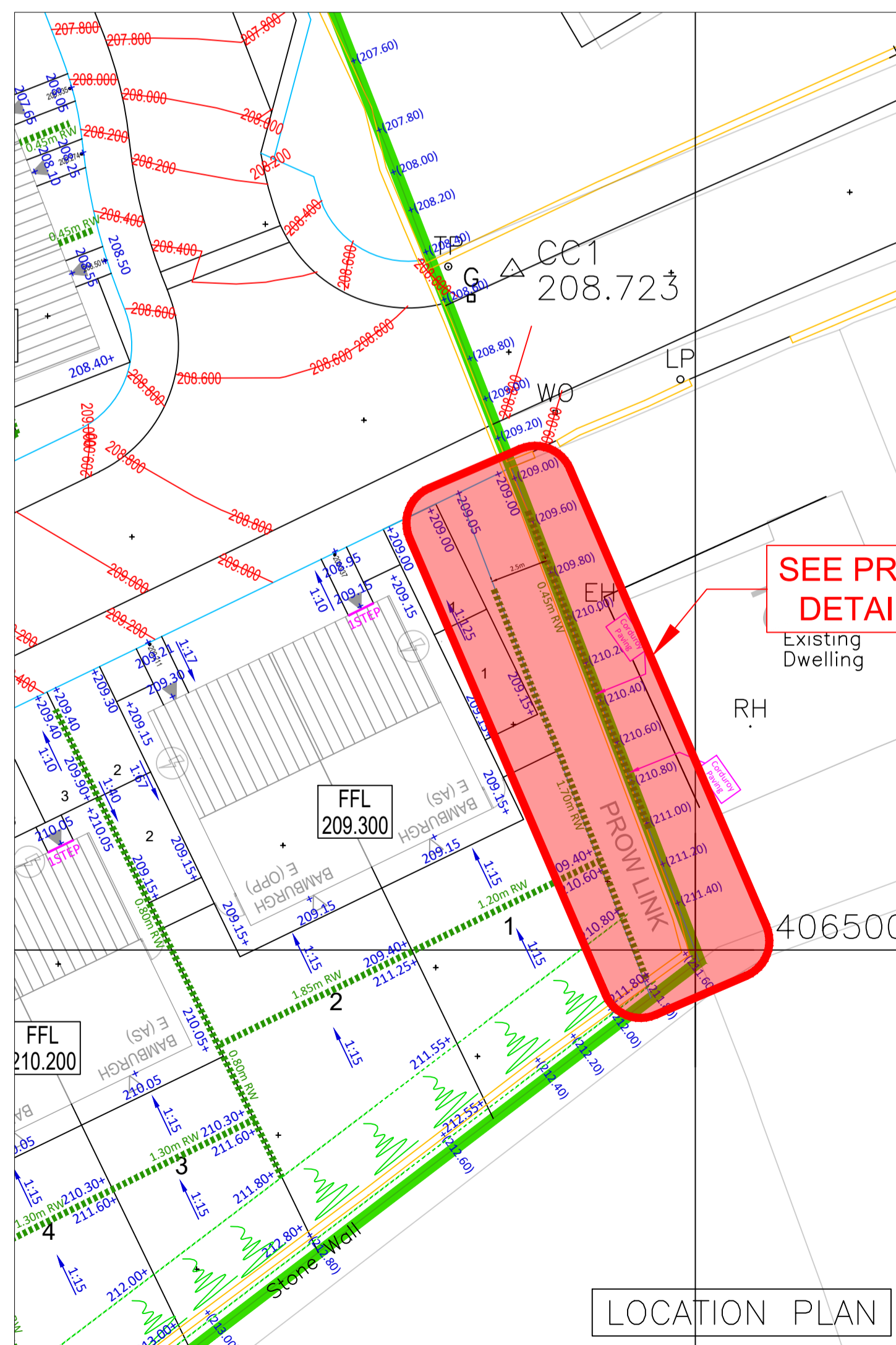
- Surcharge = 10.0kN/m<sup>2</sup>
- Facing: Re-use Existing stone
- 25mm Cavity
- 7N/mm blockwork to retained face
- Ties at maximum 450x900 crs
- Base: 1 Layer A393 Mesh in the bottom 40mm cover.
- Minimum 50mm thick concrete blinding to be taken down to Weathered Sandstone as required



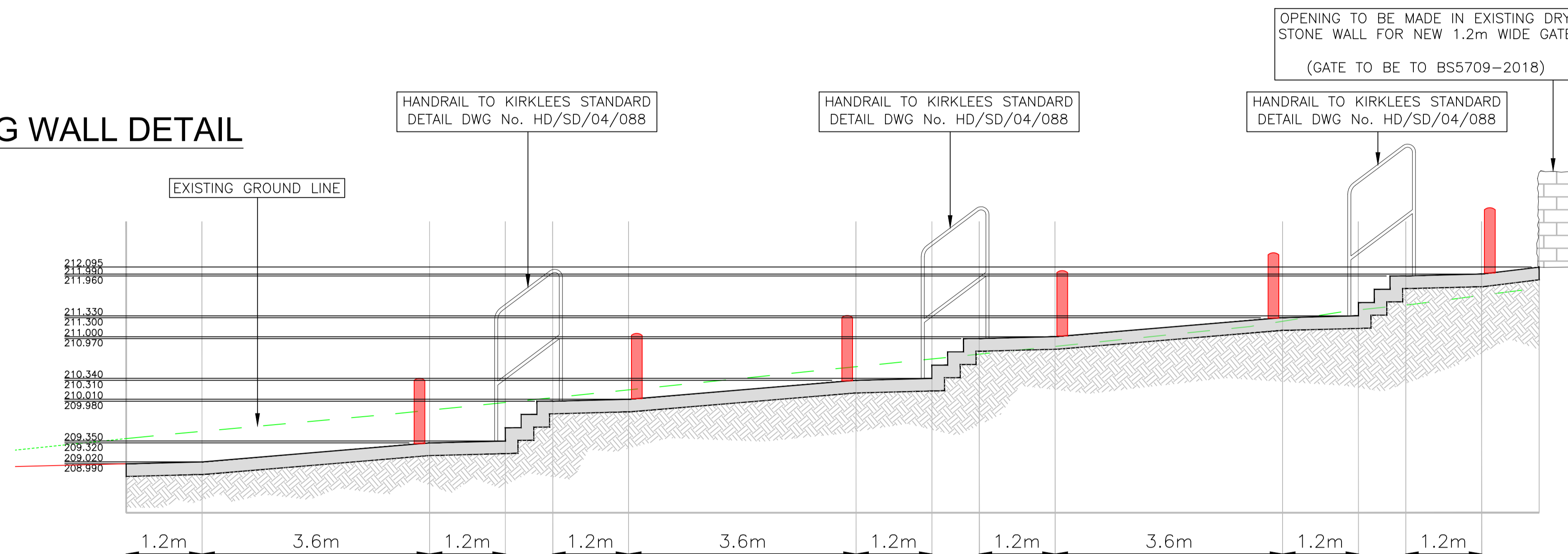
**FLAG STEP DETAIL**



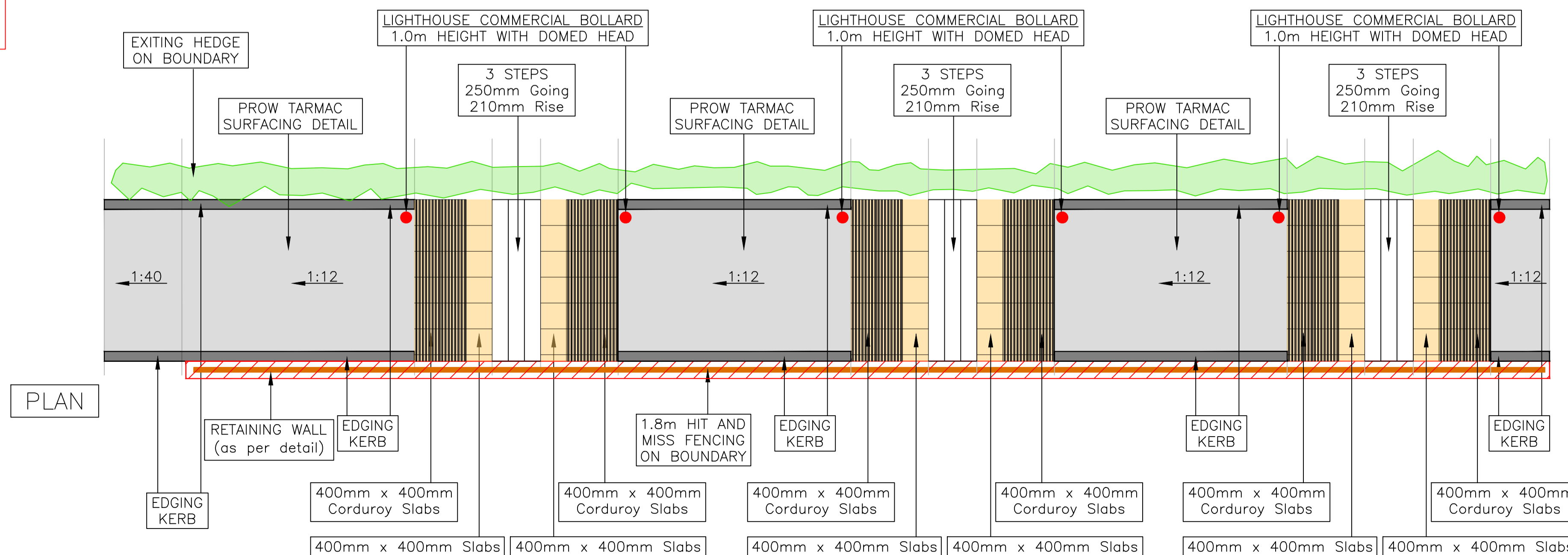
**PROW DETAIL**



**LOCATION PLAN**



**SECTION**



**PLAN**

- NOTES**
1. THIS DRAWING IS PRODUCED FOR USE IN THIS PROJECT ONLY AND MAY NOT BE USED FOR ANY OTHER PURPOSE. THE CONSULTING ENGINEERS ACCEPT NO LIABILITY FOR THE USE OF THIS DRAWING OTHER THAN THE PURPOSE FOR WHICH IT WAS INTENDED IN CONNECTION WITH THIS PROJECT AS RECORDED ON THE TITLE BLOCK FIELDS 'PURPOSE FOR ISSUE' AND 'FILE STATUS CODE'.
  2. THIS DRAWING MAY NOT BE REPRODUCED IN ANY FORM WITHOUT PRIOR WRITTEN AGREEMENT FROM ADVANT ENGINEERS.
  3. DO NOT SCALE FROM THE DRAWING, USE WRITTEN DIMENSIONS ONLY.
  4. ALL DIMENSIONS ARE IN MILLIMETRES UNLESS OTHERWISE SPECIFIED.
  5. DISCREPANCIES MUST BE REPORTED BACK TO THE ENGINEER PRIOR TO CONSTRUCTION.
  6. THIS DRAWING TO BE READ IN CONJUNCTION WITH ALL RELEVANT ADVANT ENGINEERS DRAWINGS AND SPECIFICATIONS.

REV	AMENDMENTS	BY	DATE
E	UPDATED TO CLIENT COMMENTS	MJM	10.05.26
D	UPDATED TO CLIENT COMMENTS	MJM	23.04.26
C	UPDATED TO HIGHWAY COMMENTS	MJM	20.04.26
B	UPDATED TO HIGHWAY COMMENTS	MJM	06.10.25
A	INITIAL ISSUE	MJM	25.08.25

**FOR APPROVAL**

STATUS	CHK'D
PRELIMINARY	MJM
FOR COMMENT	MJM
FOR APPROVAL	MJM
FOR CONSTRUCTION	
AS BUILT	



Unit 6 Benton Office Park, Bennett Avenue  
Horbury, Wakefield, West Yorkshire, WF4 5RA  
01924 654108  
wakefield@advantengineers.co.uk

CLIENT  
**ORION HOMES LIMITED**

CONTRACT  
**BANKFIELD DRIVE HOLMBRIDGE**

TITLE  
**PROW DETAIL**

DRAWN	CHK'D
MJM	MJM

SCALE	DATE
SEE DETAIL (A1)	25.08.25

JOB No	DRG No	REV
21043	138	E