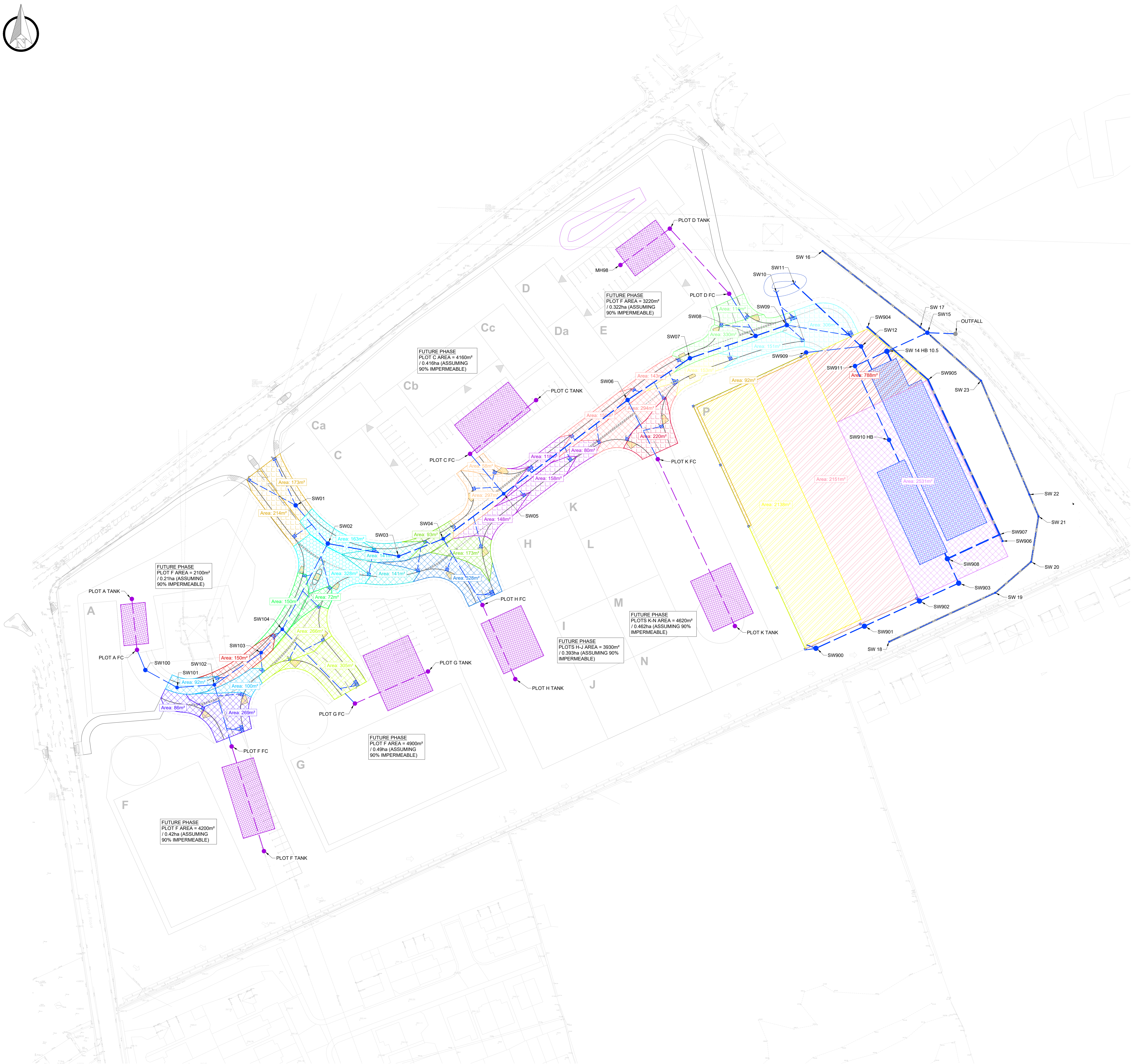


- Notes**
- Do not scale this drawing. All dimensions must be checked/verified on site if in doubt ask.
 - This drawing is to be read in conjunction with all relevant architects, engineers and specialists drawings and specifications.
 - All dimensions in meters unless noted otherwise. All levels in metres unless noted otherwise.
 - Any discrepancies noted on site are to be reported to the engineer immediately.
 - This drawing should be printed and read in colour.

- Legend**
- PROPOSED SURFACE WATER
 - PROPOSED FLOW CONTROL
 - PROPOSED BACKDROP CONNECTION
 - PROPOSED ROAD GULLY
 - PROPOSED LINEAR DRAINAGE SUMP
 - PROPOSED FILTER DRAIN
 - PROPOSED ATTENUATION TANK
 - EXISTING FOUL WATER
 - FUTURE PHASE SURFACE WATER
 - FUTURE PHASE ATTENUATION TANK



PROPOSED CATCHMENT AREAS - DETAILED APPLICATION (ROAD AND PLOT P)

HATCH COLOUR	CATCHMENT REF	MH LINK
[Hatch]	C1	SW102
[Hatch]	C2	SW103
[Hatch]	C3	SW104
[Hatch]	C4	SW104
[Hatch]	C5	SW02
[Hatch]	C6	SW01
[Hatch]	C7	SW03
[Hatch]	C8	SW04
[Hatch]	C9	SW04
[Hatch]	C10	SW05
[Hatch]	C11	SW05
[Hatch]	C12	SW06
[Hatch]	C13	SW07
[Hatch]	C14	SW07
[Hatch]	C15	SW08
[Hatch]	C16	SW08
[Hatch]	C17	SW09
[Hatch]	C18	SW900
[Hatch]	C19	SW902
[Hatch]	C20	SW905
[Hatch]	C21	SW907
[Hatch]	C22	SW909

TOTAL (m²)	13680	
TOTAL (ha)	1.368	
PROPOSED CATCHMENT AREAS - OUTLINE APPLICATION		
	FUTURE PHASES	SITE WIDE
TOTAL (m²)	27130	
TOTAL (ha)	2.713	
SITE WIDE TOTALS		
TOTAL (m²)	40810	
TOTAL (ha)	4.081	

Rev	Date	Details of Issue	Drawn	Rev'd
P01	11.05.25	INITIAL ISSUE	SM	KJ

Issues & Revisions

Consultant



Client
MORE CONSTRUCTION

Project Title
LINDLEY MOOR ROAD

Drawing Title
SITE WIDE PROPOSED AREAS

Drawn By	SM	Reviewed By	KJ
Hexa Ref	800150	Scale at A0	1:500

Purpose of Issue
PRELIMINARY

Project - Originator - Zone - Level - Type - Role - Number
800150-HEX-XX-DR-C-9230

Status
S1

Revision