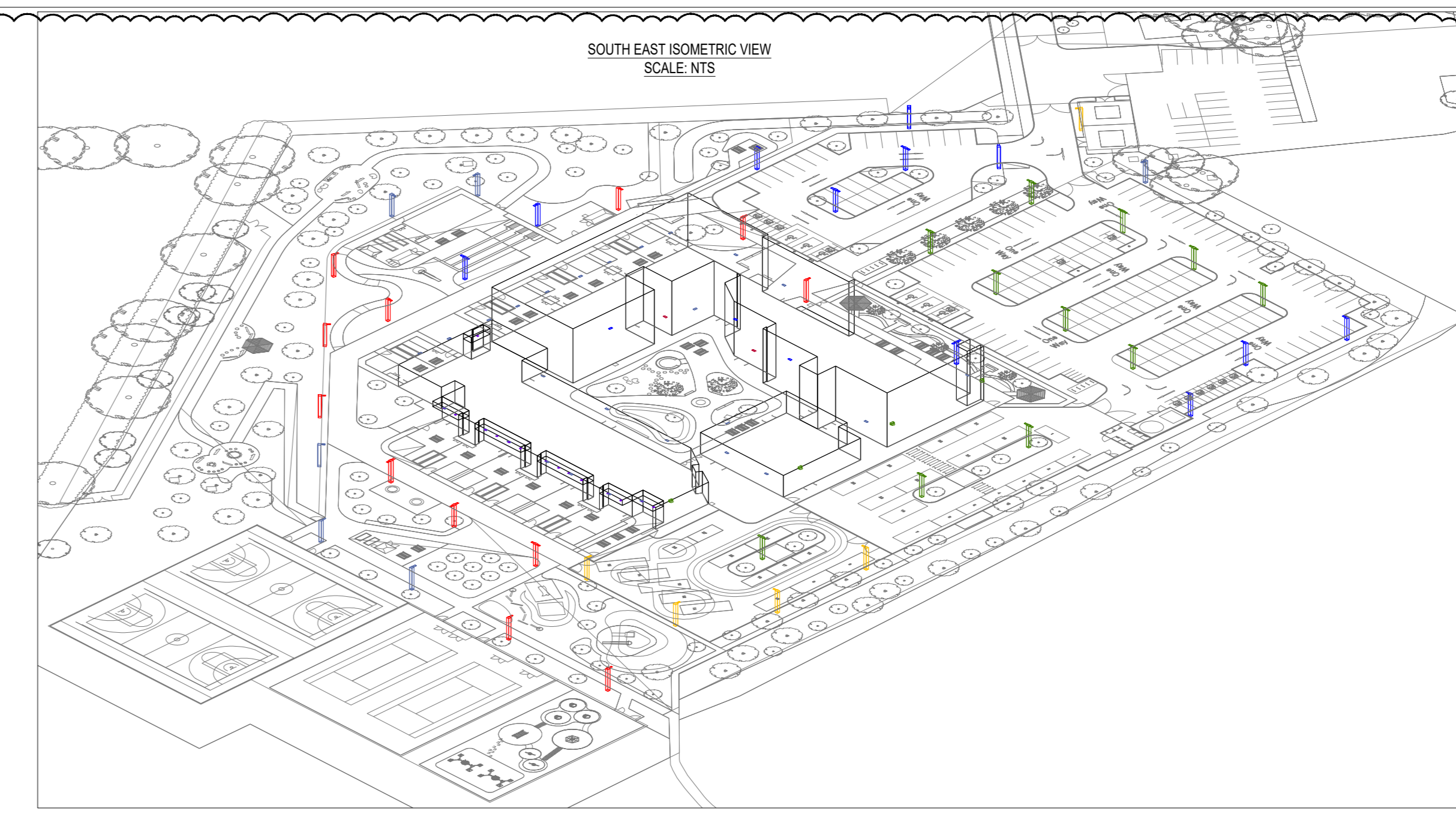
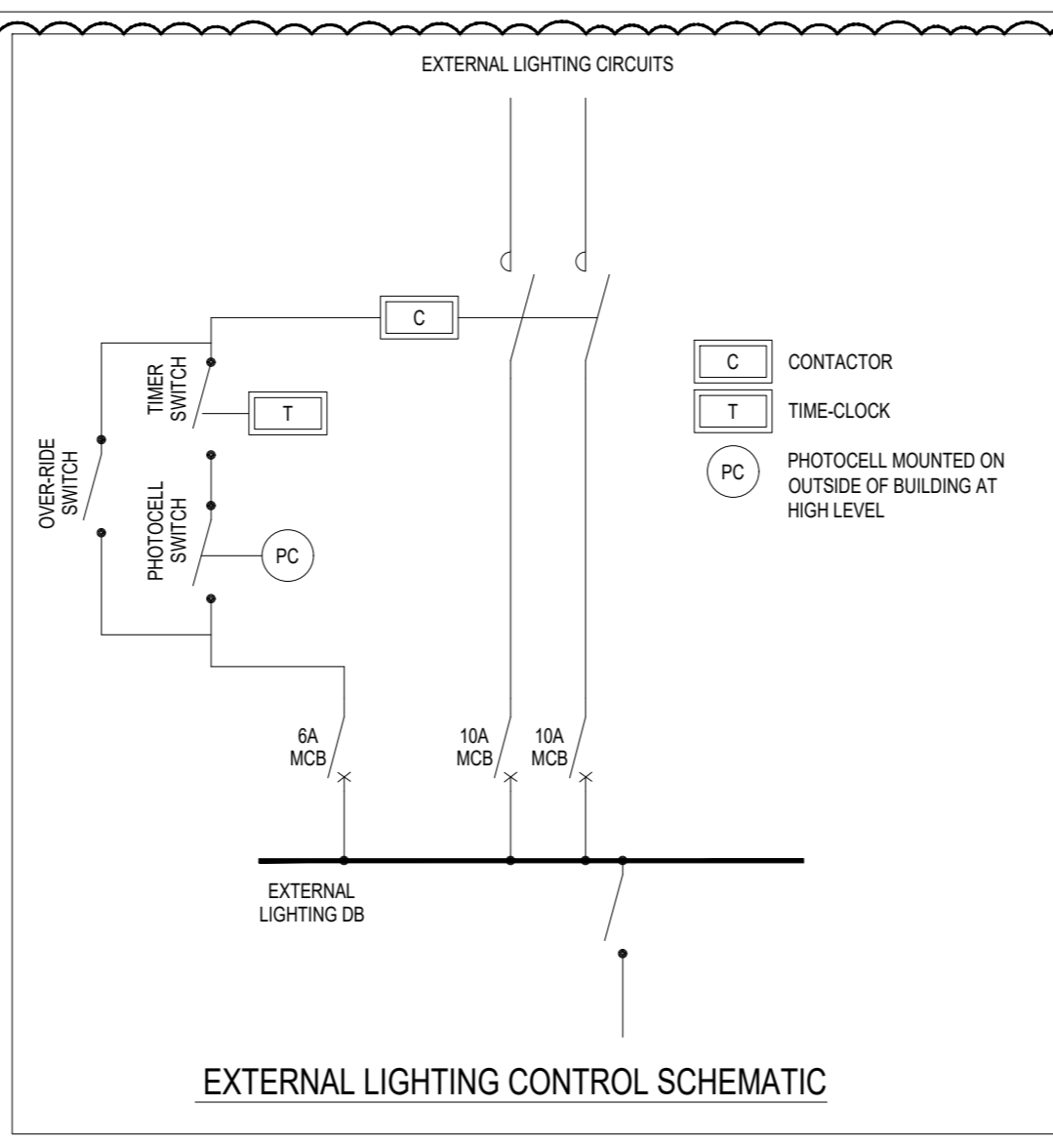


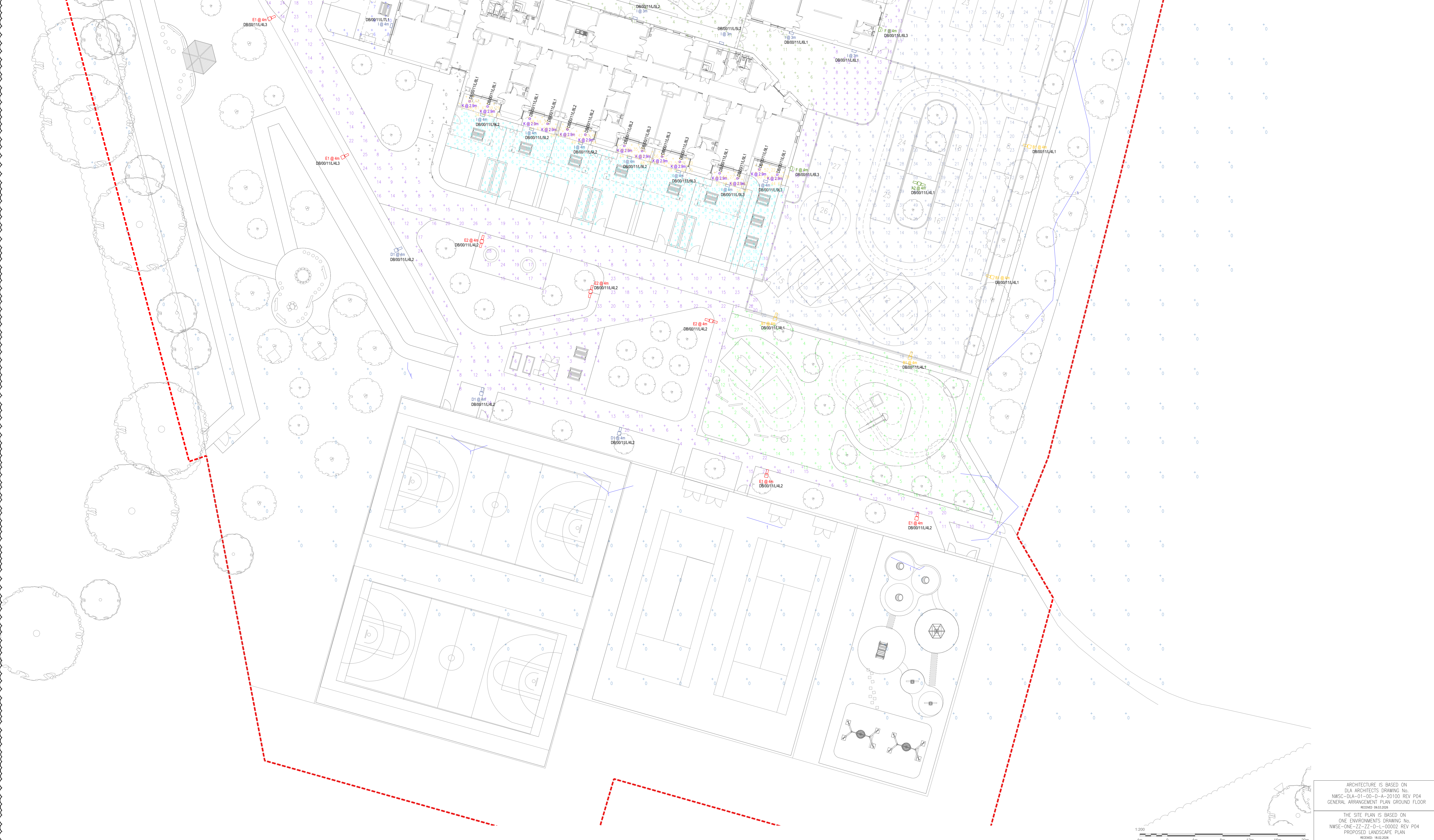
SCHEDULE	LABEL	QTY	MANUFACTURER	CATALOG	DESCRIPTION	UNIT	POWER
A2	11	HOLOPHANE EUROPE LIMITED	2 x DPL 1 LA02 AY W020 on 4m Column	Denver D Post Top Filing	60		
B1	5	HOLOPHANE EUROPE LIMITED	1 x DPL 1 LA022 FW W024 on 4m Column	Denver D Post Top Filing	24		
C1	7	HOLOPHANE EUROPE LIMITED	1 x DPL 1 LA022 AY W024 on 4m Column	Denver D Post Top Filing	24		
C2	4	HOLOPHANE EUROPE LIMITED	2 x DPL 1 LA022 AY W024 on 4m Column	Denver D Post Top Filing	48		
D1	6	HOLOPHANE EUROPE LIMITED	1 x DPL 1 LA022 NR W015 on 4m Column	Denver D Post Top Filing	15		
E1	9	HOLOPHANE EUROPE LIMITED	1 x DPL 1 LA022 NR W015 on 4m Column	Denver D Post Top Filing	15		
E2	3	HOLOPHANE EUROPE LIMITED	2 x DPL 1 LA022 NR W015 on 4m Column	Denver D Post Top Filing	30		
F	4	HOLOPHANE EUROPE LIMITED	DWL 1 LA022 FW W018 at 4m AFFL	Denver D Wall	18		
G	3	HOLOPHANE EUROPE LIMITED	DWL 1 LA022 FW W011 at 7m AFFL	Denver D Wall	10.3		
H	2	HOLOPHANE EUROPE LIMITED	DWL 1 LA012 HN W007 at 3m AFFL	Denver D Wall	6.5		
I	27	HOLOPHANE EUROPE LIMITED	DWL 1 LA012 FW W007 at Height Above AFFL	Denver D Wall	6.5		
K	15	HOLOPHANE EUROPE LIMITED	PBHD 500S 843098	MICRO Digh 3 LED (5.9W - 2700K) Wide 220-240V (150lm/ft)	5.9		

DESCRIPTION	SYMBOL	AVG	MN	MNAVG
INNER COURTYARD(S) - 5025lx	+	5 lux	2 lux	0.40
MAIN CAR PARK 10025lx	+	15 lux	4 lux	0.27
OUTDOOR TEACHING AREAS (NW)	+	8 lux	4 lux	0.50
OUTDOOR TEACHING AREAS ALL (SW)	+	9 lux	4 lux	0.44
OUTDOOR TEACHING AREAS UNDER CANOPY ALL (SW)	+	51 lux	20 lux	0.39
OVERFLOW ACCESS CAR PARK 10025lx	+	14 lux	4 lux	0.29
PATHWAYS 5LUX 0.25lx	+	9 lux	3 lux	0.33
SPLL	+	0 lux	0 lux	N/A
STORAGE 5LUX 0.25lx	+	9 lux	3 lux	0.33



- NOTES
- THIS DRAWING TO BE READ IN CONJUNCTION WITH THE MAIN SPECIFICATION AND ALL LATEST ARCHITECTS AND ENGINEERS DRAWINGS
 - ALL EXTERNAL LIGHTING IS DESIGNED AND INSTALLED IN ACCORDANCE WITH:
 - IETI TECHNICAL ANNEX 2E
 - CIBSE LIGHTING GUIDE
 - BS EN 12464-2
 - BS EN 12001
 - BS EN 12468
 - BS 5300
 - IFC 2011
 - ALL EXTERNAL LIGHTING IS TO BE CONTROLLED BY A PHOTOCELL AND TIME SWITCH ARRANGEMENT WITH A MANUAL OVERRIDE SWITCH
 - THE EXTERNAL LIGHTING TIME CLOCK IS SET SO THAT ALL EXTERNAL LIGHTING IS TO BE OFF BETWEEN 2300HRS AND 0700HRS
 - ALL LIGHTING COLUMNS TO BE SITED TO SUIT LOCATION FROM TREES LANDSCAPE AND EXTERNAL FURNITURE
 - WHERE EXTERNAL LUMINAIRE POSITIONS SHOWN ON THIS DRAWING ARE INDICATIVE ONLY SHOWING DESIGN INTENT
 - THE NORMAL PEDESTRIAN ESCAPE ROUTES SHALL BE PROVIDED WITH EMERGENCY LIGHTING TO THE SAME STANDARD AS ESCAPE ROUTES WITH NON-RESIDENTIAL PUBLIC PREMISES IN ACCORDANCE WITH BS5266-1
 - ABOVE ALL FINAL EXITS, SUITABLY RATED WALL MOUNTED LUMINAIRE COMBINED WITH 3 HOUR EMERGENCY PACK
 - DESIGNATED PARKING SPACES AND ANY ACCESS FROM SUCH SPACES TO THE BUILDING ENTRANCE SHALL BE LIT ARTIFICIALLY TO ACHIEVE A MINIMUM LUMINANCE OF 10 LUX, BUT WITH AN LUMINANCE OF 100 LUX IN RAMP OR STEPS
 - THE LIGHTING IS TO BE DESIGNATED AS AN INTEGRAL ELEMENT OF THE DEVELOPMENT
 - ALL EXTERNAL LIGHTING SHALL UTILISE LOW ENERGY FITTINGS WHERE PRACTICALLY POSSIBLE
 - THE ALIGNMENT OF LAMPS AND PROVISION OF SHIELD SHALL BE POSITIONED IN A MANNER TO MINIMISE SPILLAGE AND GLOW INCLUDING INTO THE NIGHT SKY
 - THE LIGHTING IS DESIGNED THAT NO SIGNIFICANT LOSS OF PRIVACY OR AMENITY TO NEARBY RESIDENTIAL PROPERTIES AND IN A MANNER THAT WILL CAUSE NO DANGER TO PEDESTRIANS AND ROAD USERS
 - THE EXTERNAL LIGHTING TO BE INSTALLED IN A MANNER TO MINIMISE HARM TO NATURAL ECOSYSTEMS
 - THE EXTERNAL LIGHTING IS DESIGNED WITH TABLES 1 & 2 OF THE ILC GUIDANCE NOTES FOR THE REDUCTION OF OBTRUSIVE LIGHT 2011 (SNVT 2011)

FOR CONTINUATION SEE DRAWING No. NWS-C-GAH-00-00-D-E-01101



- DARK SKY CRITERIA
- COMPLIANCE WITH LOCAL AUTHORITY DARK SKY CRITERIA IS TO BE ACHIEVED USING PROPER LIGHT CONTROL FROM LUMINAIRE HEADOPTIC
 - LUMINAIRES INSTALLED SHALL HAVE NO UPWARD LIGHT COMPONENT. THE LOCAL AUTHORITY'S DARK SKY POLICY SHALL BE CONSULTED PRIOR TO INSTALLATION OF EXTERNAL LIGHTING
 - CONTROL OF EXTERNAL LIGHTING SHALL BE VIA TIME BLOCK AND PHOTOCELLS A MANUAL OVERRIDE FACILITY SHALL ALSO BE PROVIDED
 - THE FOLLOWING DESIGN PRINCIPLES SHALL BE FOLLOWED:
 - LIGHT WHAT IS NECESSARY ONLY
 - LIGHT THE AREAS WE NEED TO ONLY
 - LIGHT ONLY WHEN IT IS NECESSARY
 - EXTERNAL LIGHTS AND THEIR LIGHT DISTRIBUTION SHALL BE POSITIONED SO AS TO AVOID LIGHT SPILL INTO THE SKY AND ONTO NEIGHBOURING PROPERTIES
- COLOUR RENDERING INDEX (Ra)
- AT NIGHT TIME THE SENSITIVITY OF THE EYE IS SHIFTED TOWARDS THE BLUE REGION OF THE VISUAL SPECTRUM AS A RESULT LAMPS WITH POOR COLOUR RENDERING INDEX SUCH AS SOME SODIUM LAMPS THAT EMT LIGHT BETWEEN THE YELLOW AND RED REGION OF THE VISUAL SPECTRUM REQUIRE MORE LUMINOUS TO LIGHT AN OBJECT WITH THE SAME LEVEL OF BRIGHTNESS THAN A SOURCE WITH BETTER COLOUR RENDERING INDEX
 - SOURCES WITH A POOR COLOUR RENDERING INDEX ALSO MAKE THE DIFFERENTIATION OF COLOURED OBJECTS MORE DIFFICULT FOR INDIVIDUALS
 - IN BS 5489-1:2003 CODE OF PRACTICE FOR THE DESIGN OF ROAD LIGHTING - PART 1 LIGHTING OF ROADS AND PUBLIC AMENITY AREAS, THIS IS ACKNOWLEDGED BY ALLOWING A REDUCTION OF THE LIGHTING LEVELS (LUMINANCE LEVELS) REQUIRED WHEN THE SOURCE SPECIFIED AS A COLOUR RENDERING INDEX Ra GREATER THAN OR EQUAL TO 60!
 - THE COLOUR RENDERING INDEX REQUIREMENTS MEANS COMPLIANCE WITH THIS ISSUE USING SOURCES OF LIGHT WITH A POOR COLOUR RENDERING INDEX IS HARSHER TO ACHIEVE THAN THOSE WITH AN INDEX GREATER THAN OR EQUAL TO 60. OTHER BENEFITS OF USING SOURCES WITH AN INDEX GREATER THAN 60 INCLUDE AN INCREASED FEELING OF SAFETY FOR INDIVIDUALS MAKING RECOGNITION OF SPACES AND OTHER INDIVIDUALS EASIER
 - IN AREAS WHERE CCTV IS USED, THE COLOUR RENDERING INDEX OF LIGHTING SOURCES IS CRITICAL: AN Ra VALUE OF AT LEAST 80 IS RECOMMENDED

P03	STAGE 4 (PCSA) SITE PLAN UPDATED: LIGHTING DESIGN REVISED:	18.03.20
P02	FOR COMMENT & APPROVAL	27.01.20
P01	FOR COMMENT & APPROVAL	13.01.20
REV	COMMENTS	DATE

G&H Filands Mill
South Parade
Leeds
LS2E 6AD
T: 0345 609 0334
E: info@wearegandh.com
W: wearegandh.com

CONTRACT
NEW WOODLEY SCHOOL & COLLEGE HUDDERSFIELD

TITLE
EXTERNAL LIGHTING SHEET 2 OF 2

Scale @ A0
1:200

GH No
1424

Modelled By
KM

Checked By
BW

Status Code
S3

Status Description
Suitable For Review & Comment

Revision Code
P03

Revision Status
Preliminary

Drawing Name
Project Originator Volume Level Type Role Number
NWS - GAH - 00 - 00 - D - E - 01102

ARCHITECTURE IS BASED ON
DIA ARCHITECTS DRAWING No.
NWS-C-GAH-01-00-0-4-20100 REV P04
GENERAL ARRANGEMENT PLAN, GROUND FLOOR
REVISED 09.03.2020

THE SITE PLAN IS BASED ON
ONE ENVIRONMENTS DRAWING No.
NWS-ONE-ZZ-D-L-00002 REV P04
PROPOSED LANDSCAPE PLAN
REVISED 14.02.2024

This drawing is copyright and may not be altered, reproduced or used without the written permission of G&H. Drawing measurements shall not be obtained by scaling, verify all dimensions on site. If you have any doubts over the information contained on this drawing please contact G&H immediately report any discrepancies on this document to the originator. This drawing is read in conjunction with associated models, specifications and related documents.