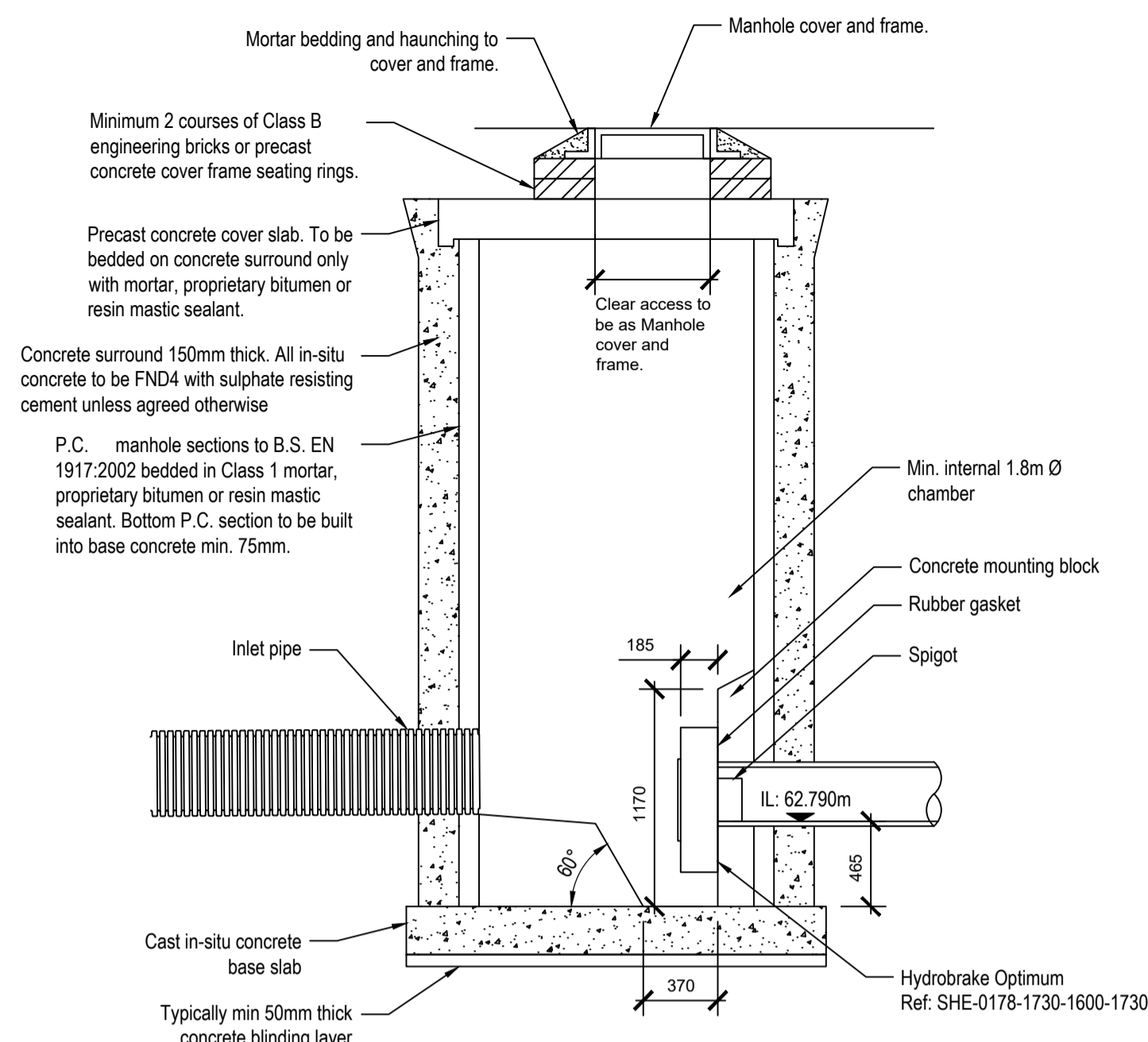


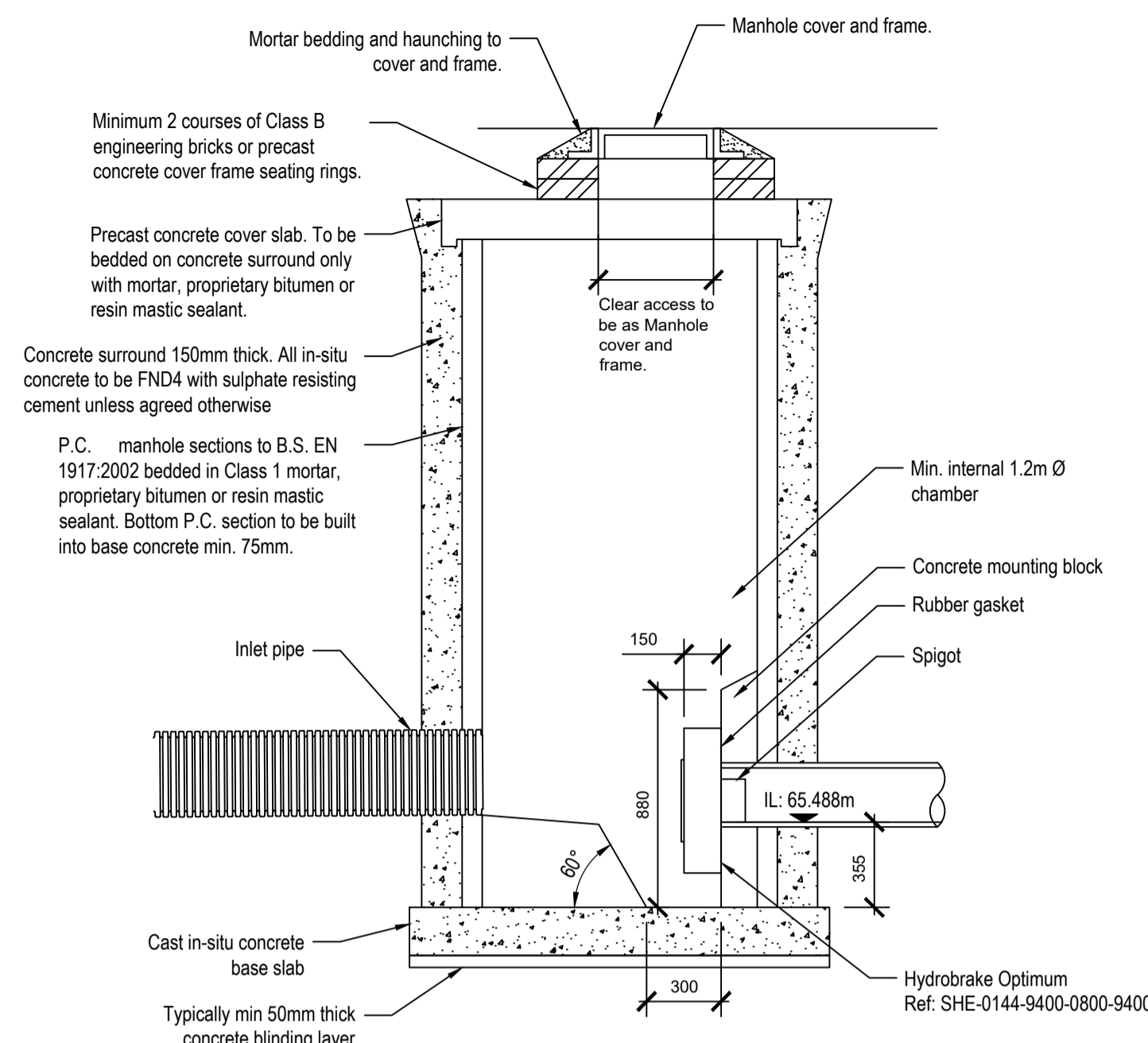
- Where this drawing has been issued in electronic .dwg format, it has been done so in good faith. JNP Group do not take any responsibility for any inaccuracies in the electronic data, which should be checked against the paper (or .pdf) drawing issue. Any apparent discrepancies should be immediately reported to JNP Group. The electronic .dwg file should not be assumed to be scale and should not be used for 'overlaying', setting out or checking of any third party information. All dimensions should be taken from the paper (or .pdf) version of the drawing. Electronic drawings may contain third party information. JNP Group take no responsibility for this information, which should be checked against the originators paper drawing(s).
- All dimensions are millimetres (mm), and levels are in metres (m) unless noted otherwise and should be checked on site prior to construction/fabrication.
- Do not scale from this drawing. Only figured dimensions are to be relied upon. Don't hesitate to get in touch with JNP Group if additional information is required.
- Any discrepancies between drawings of different scales and between drawings and specifications, where appropriate, to be reported to JNP Group for decision.
- Copyright reserved. This drawing may only be used for The Client and location specified in the title block. It may not be copied or disclosed to any third party without the prior written consent of JNP Group.
- This drawing should only be used for construction if the drawing status is "A4 - Approved/Stage Complete". JNP Group takes no responsibility for construction works undertaken to drawings that are not marked with this status.

Health & Safety Note

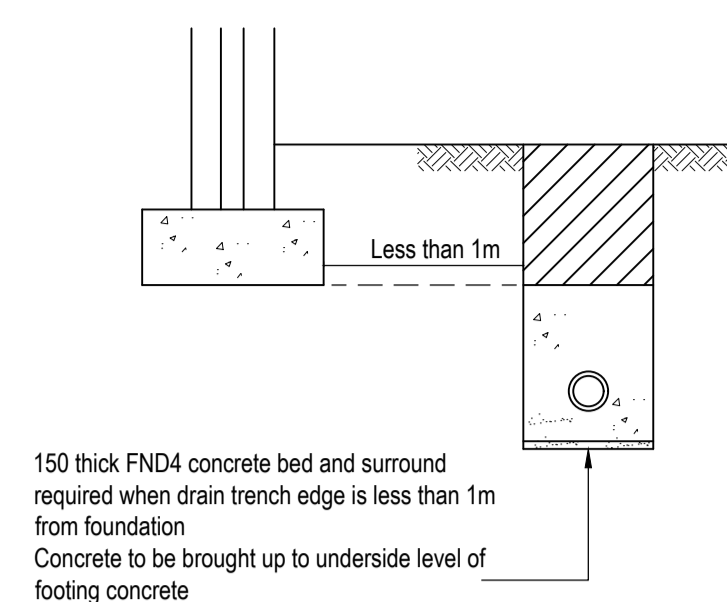
The details on this drawing have been prepared on the assumption that a competent contractor will be carrying out the works. If the contractor(s) considers that there is insufficient Health and Safety information on this drawing, this should immediately be brought to the attention of the designer.



Hydrobrake Flow Control Manhole Detail MH S12
Scale 1:25

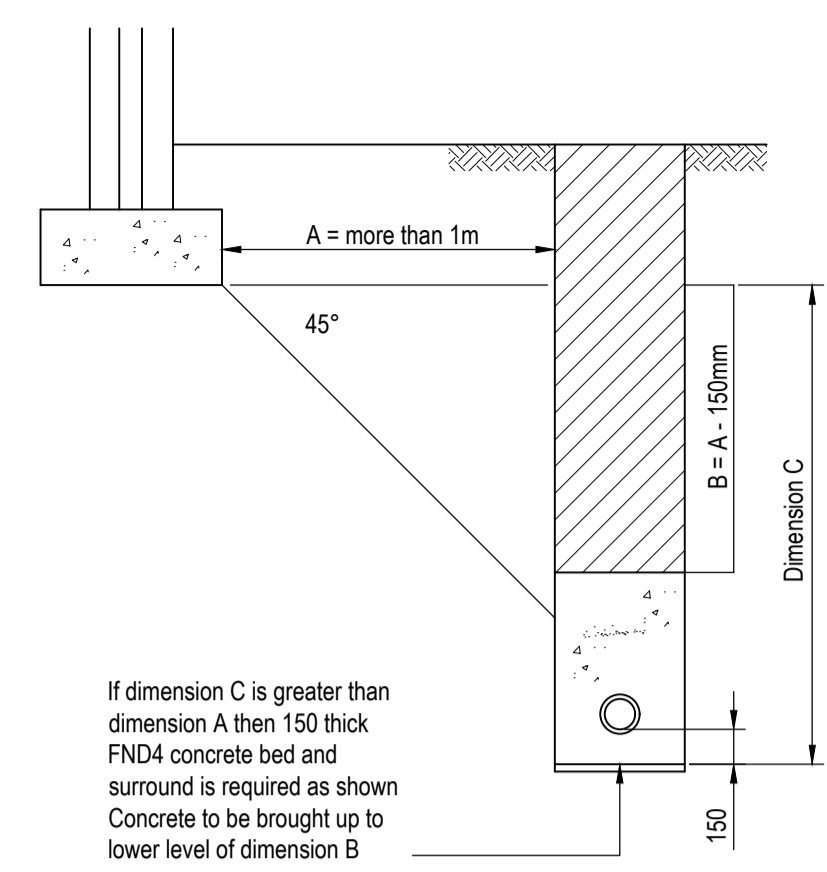


Hydrobrake Flow Control Manhole Detail MH S15
Scale 1:25



Note: Concrete bed and surround to be discontinued at every pipe joint using compressible filler to be 18mm thick for pipework upto 450mm diameter

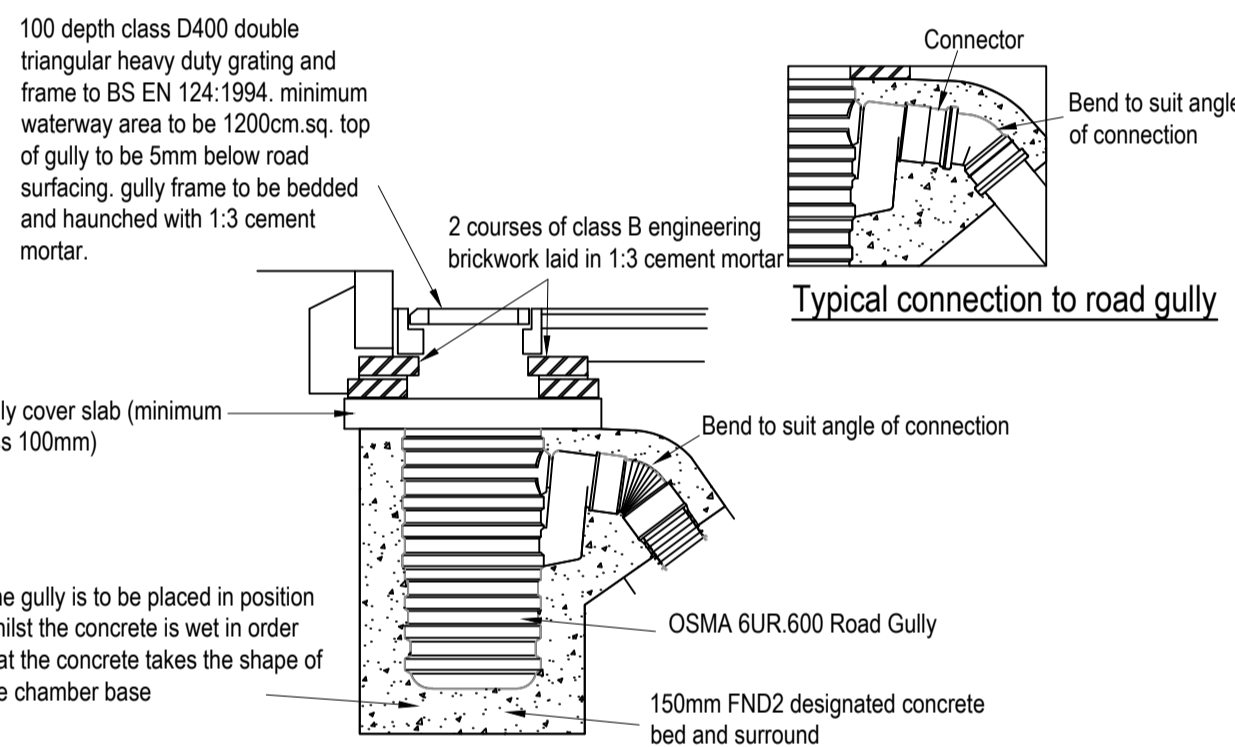
Drain trench edge less than 1m from footing/foundation edge



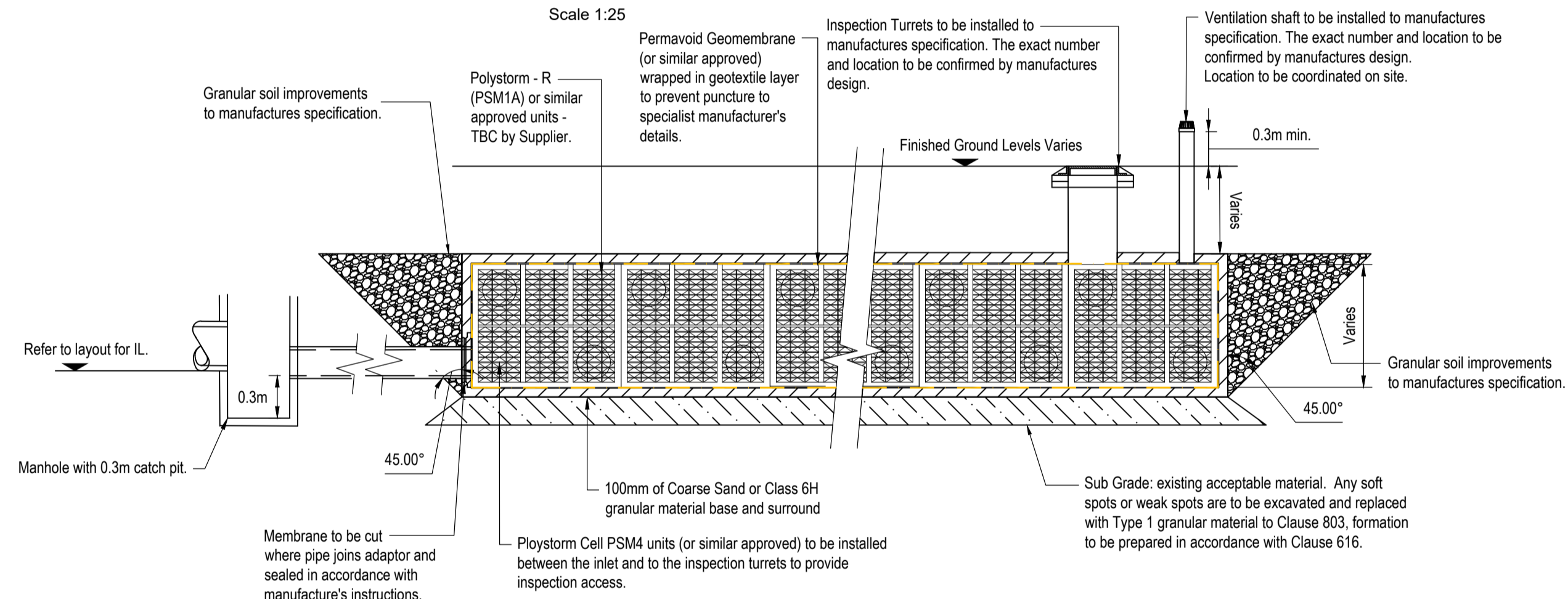
If dimension A then 150 thick FND4 concrete bed and surround is required as shown. Concrete to be brought up to lower level of dimension B

Drain trench edge more than 1m from footing/foundation edge

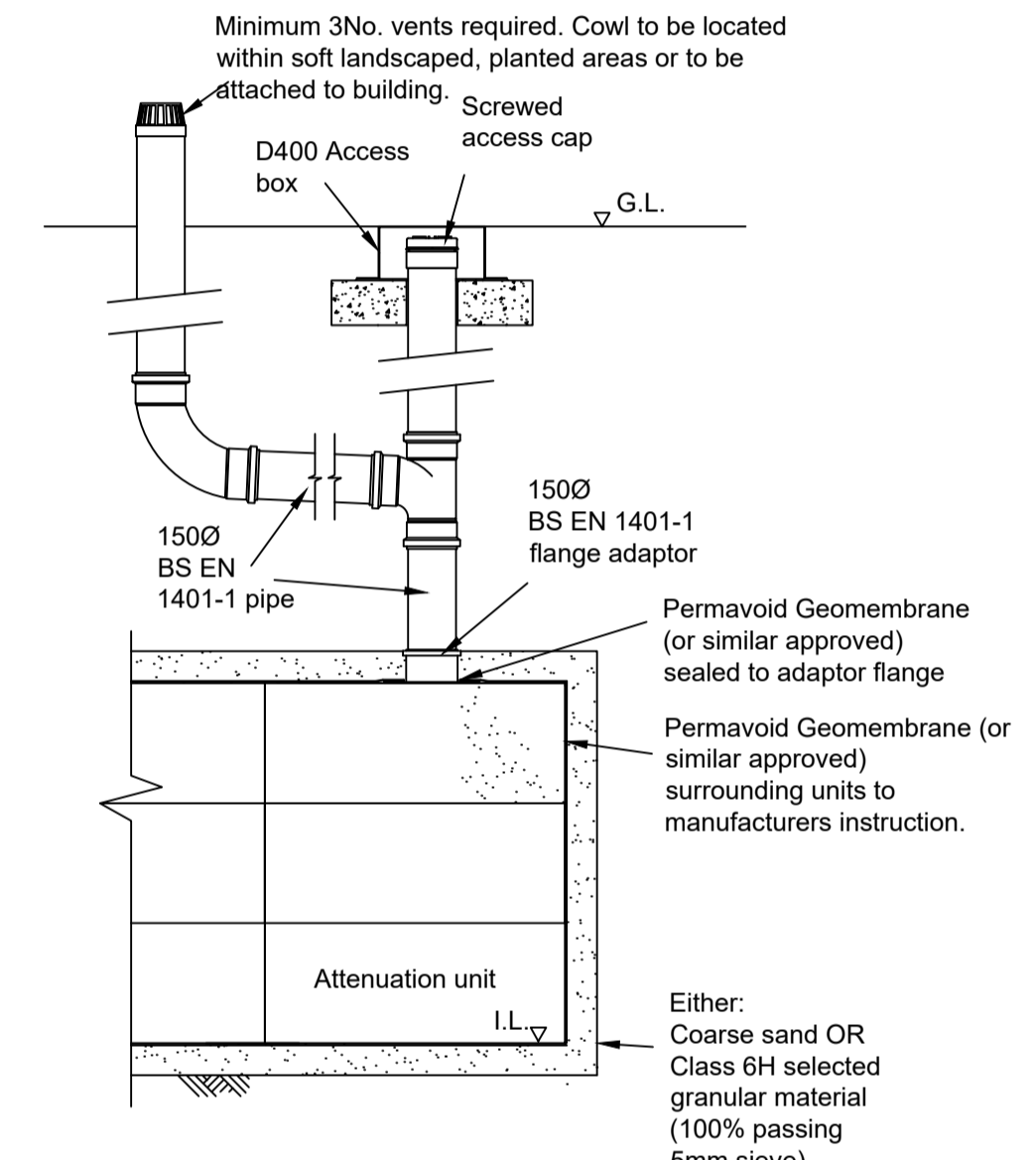
Pipe Bedding Adjacent to Foundation
(Scale 1:25)



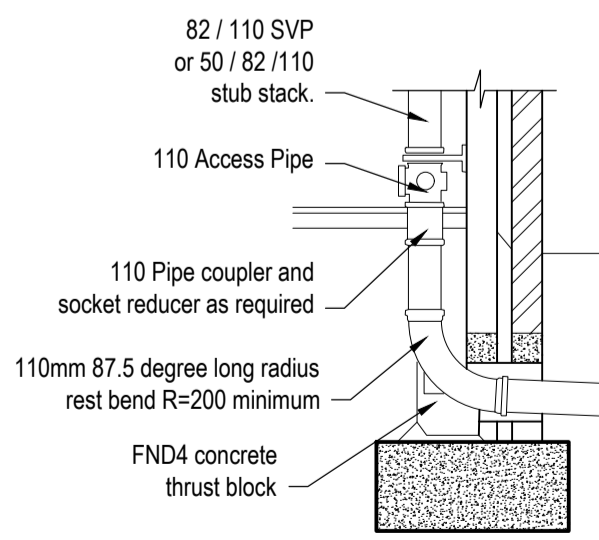
Typical Private Road Gully
(Scale 1:25)



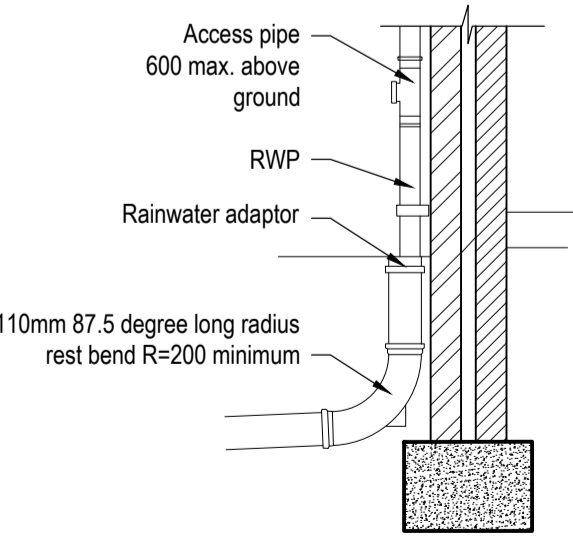
Typical Tanked Geo Cellular Crate Detail
Not to Scale



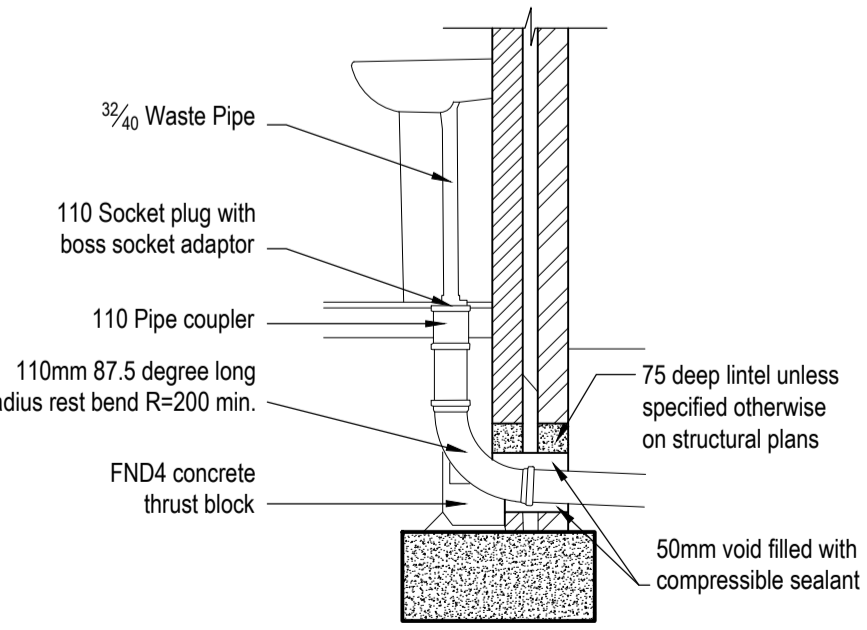
Typical Tank Vertical Vent Pipe Connection
Scale 1:25



Soil vent pipe and sub stack connection



External RWP to Drain



Internal Waste Pipe Connection

Internal to External Drainage Connections
(Scale 1:25)

Rev.	Date	Description	Drn / Chk / Appd.
P01	28/11/2025	Draft Issue	LC / CS
Submittal: S3 - Suitable for Review & Comment			

JNP GROUP
CONSULTING ENGINEERS

Amersham • Belfast • Brighouse • Bristol
Hartlepool • Sheffield • Warwick

www.jnpgroup.co.uk

Client: John L Brierley Ltd.

Job: Turnbridge Mills, Quay Street, Huddersfield

Title: Drainage Details Sheet 2 of 2

Classification: FI_60_20

Scale @ A1: As Shown

Project - Originator - Volume/System - Level/Location - Type - Discipline - Number: S12097 - JNP - XX-XX-DR - C - 3002

Revision: P01