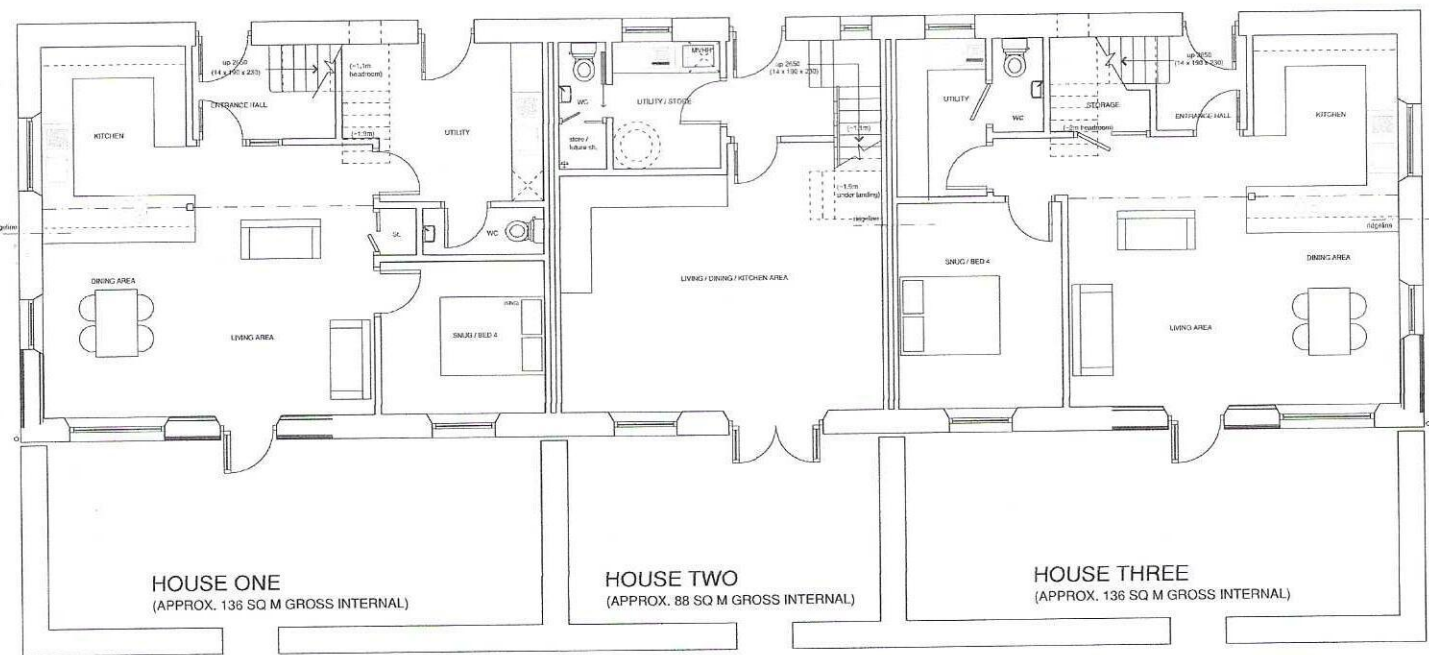


UPPER LEVEL PLAN



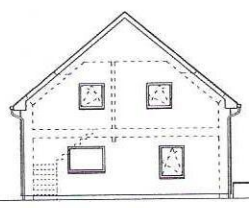
LOWER LEVEL PLAN

1:50 @ A1

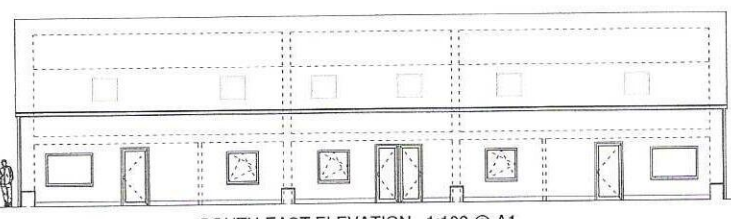
HOUSE ONE  
(APPROX. 136 SQ M GROSS INTERNAL)

HOUSE TWO  
(APPROX. 88 SQ M GROSS INTERNAL)

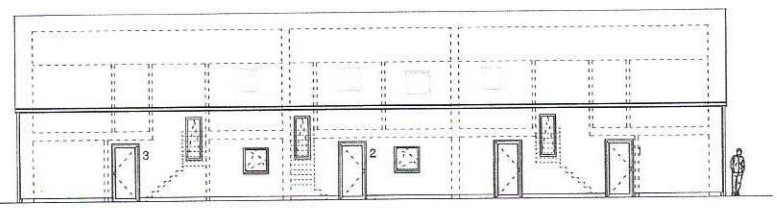
HOUSE THREE  
(APPROX. 136 SQ M GROSS INTERNAL)



SOUTH-WEST ELEVATION



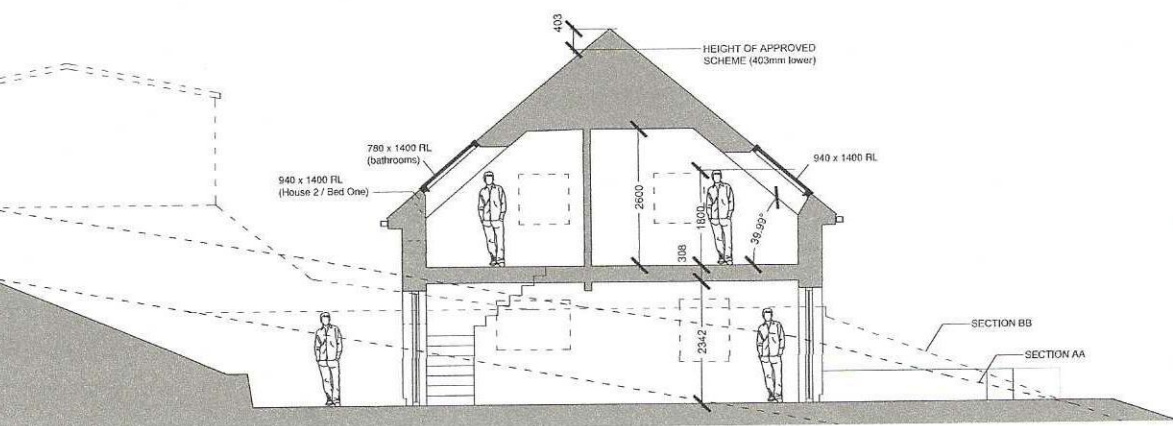
SOUTH-EAST ELEVATION 1:100 @ A1



NORTH-WEST ELEVATION



NORTH-EAST ELEVATION



INDICATIVE CROSS SECTION 1:50 @ A1

**MINOR AMENDMENTS APPLICATION**  
 (MINOR ALTERATIONS TO BUILD HEIGHT, PENETRATION AND INTERNAL LAYOUTS)

**HAWDON RUSSELL ARCHITECTS**

Land at Mount Pleasant,  
 37/2405/10