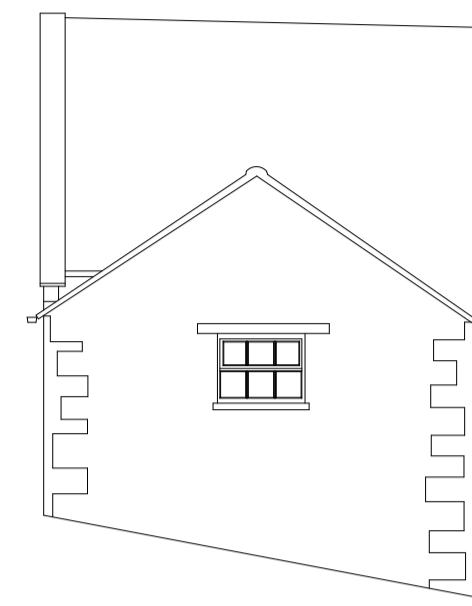


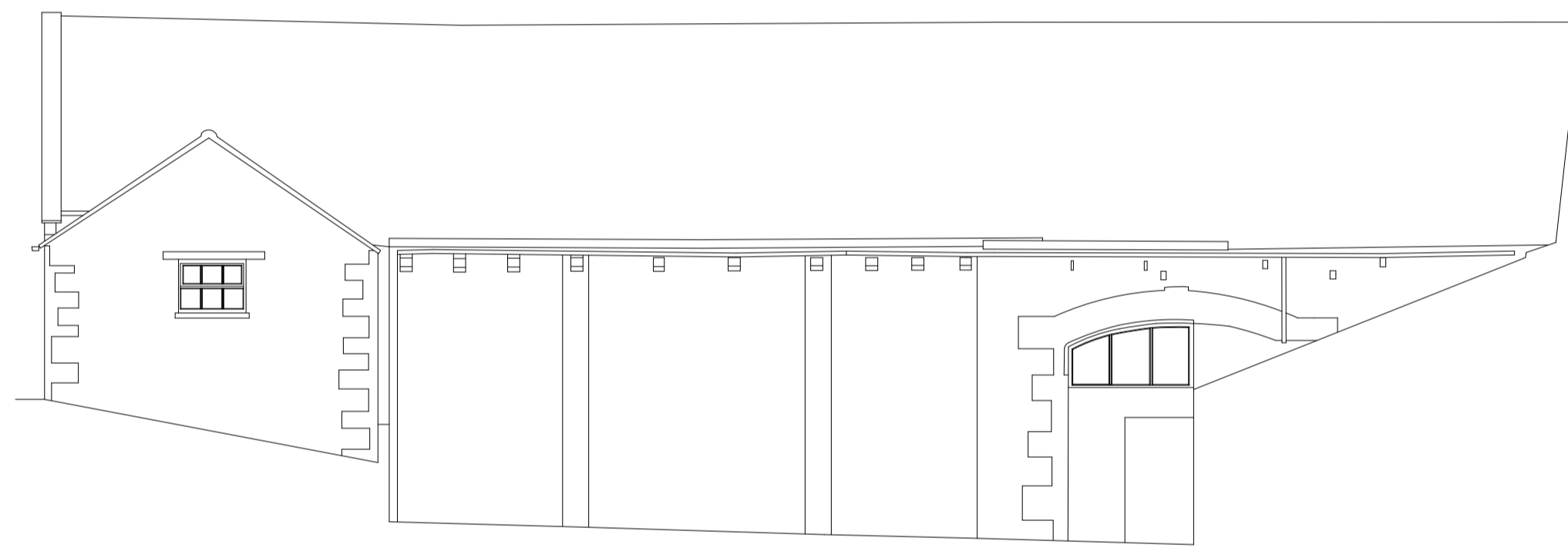
DATUM 60.000m 28.000m DATUM 60.000m  
ELEVATION 1



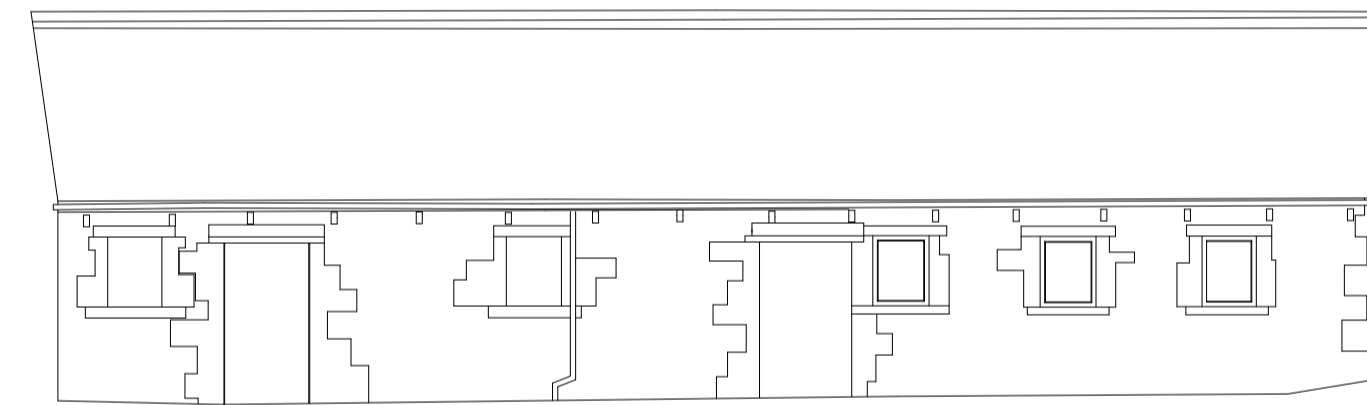
DATUM 60.000m DATUM 60.000m  
ELEVATION 2



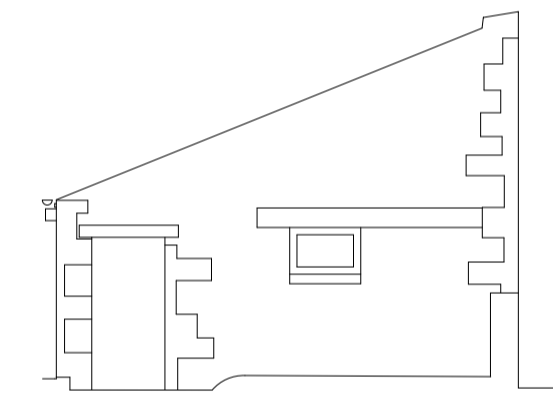
DATUM 60.000m 18.000m DATUM 60.000m  
ELEVATION 3



DATUM 60.000m 27.000m DATUM 60.000m  
ELEVATION 4



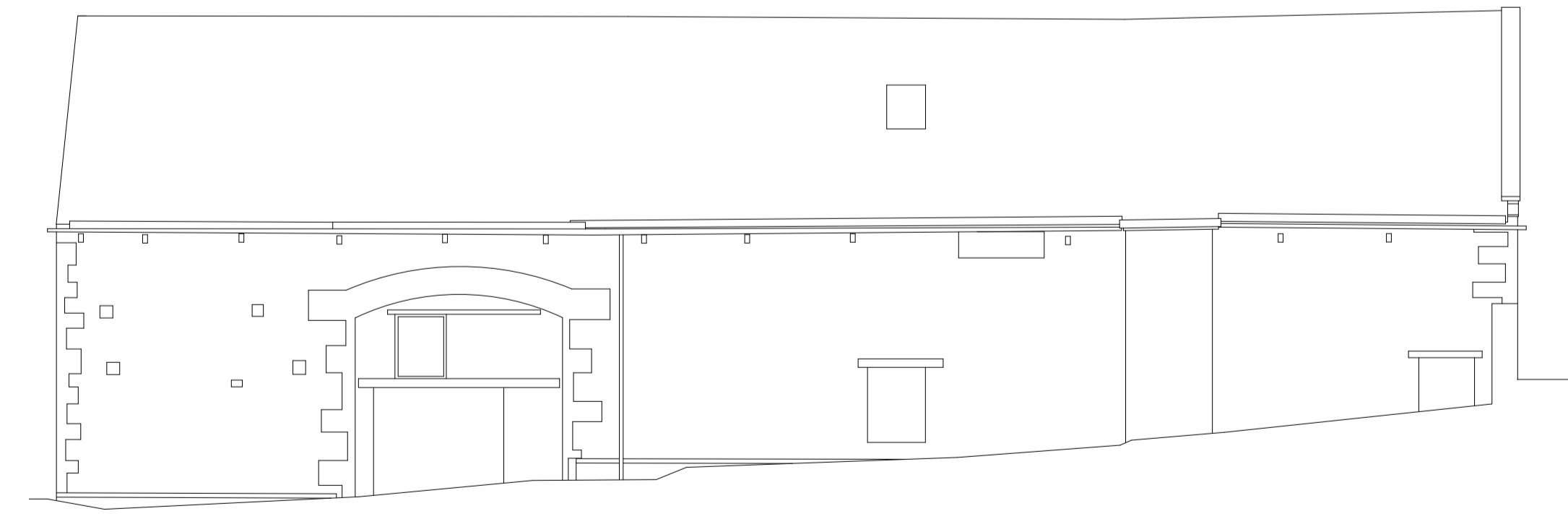
DATUM 60.000m 18.000m DATUM 60.000m  
ELEVATION 5



DATUM 60.000m 6.000m DATUM 60.000m  
ELEVATION 6



DATUM 60.000m 28.000m DATUM 60.000m  
ELEVATION 7



DATUM 60.000m 27.000m DATUM 60.000m  
ELEVATION 8

**LEGEND**

|    |                 |     |                  |     |                  |    |                |     |                     |
|----|-----------------|-----|------------------|-----|------------------|----|----------------|-----|---------------------|
| AV | AIR VALVE       | CC  | CONCRETE COVER   | FWS | FOUL WATER SEWER | LP | LAMP POST      | ST  | STOP TAP            |
| B  | BOLLARD         | CM  | CABLE MARKER     | G   | GELLY            | MC | METAL COVER    | SV  | STOP VALVE          |
| BH | BORHOLE         | CP  | CATCH PIT        | GV  | GAS VALVE        | MH | MANHOLE        | SWS | SURFACE WATER SEWER |
| BS | BUS STOP        | CTV | CABLE TV L/C     | HV  | HIGH VOLTAGE     | MV | MEDIUM VOLTAGE | TL  | TRAFFIC LIGHTS      |
| BT | BRITISH TELECOM | DP  | DOWN PIPE        | IC  | INSPECTION COVER | P  | POST POLE      | TP  | TELEGRAPH POLE      |
|    |                 | ECP | ELEC. CABLE PIT  | JB  | JUNCTION BOX     | RE | RODDING EYE    | TH  | THRESHOLD           |
|    |                 | EP  | ELEC. POLE/PYLON | KW  | KERB WEIR        | RS | ROAD SIGN      | VP  | VENT PIPE           |
|    |                 | ER  | EARTH ROD        | LB  | LITTER BIN       | S  | STAY           | WM  | WATER METER         |
|    |                 | FH  | FIRE HYDRANT     | LH  | LAMP HOLE        | SC | STOP COCK      | WO  | WASH OUT            |