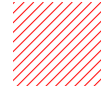


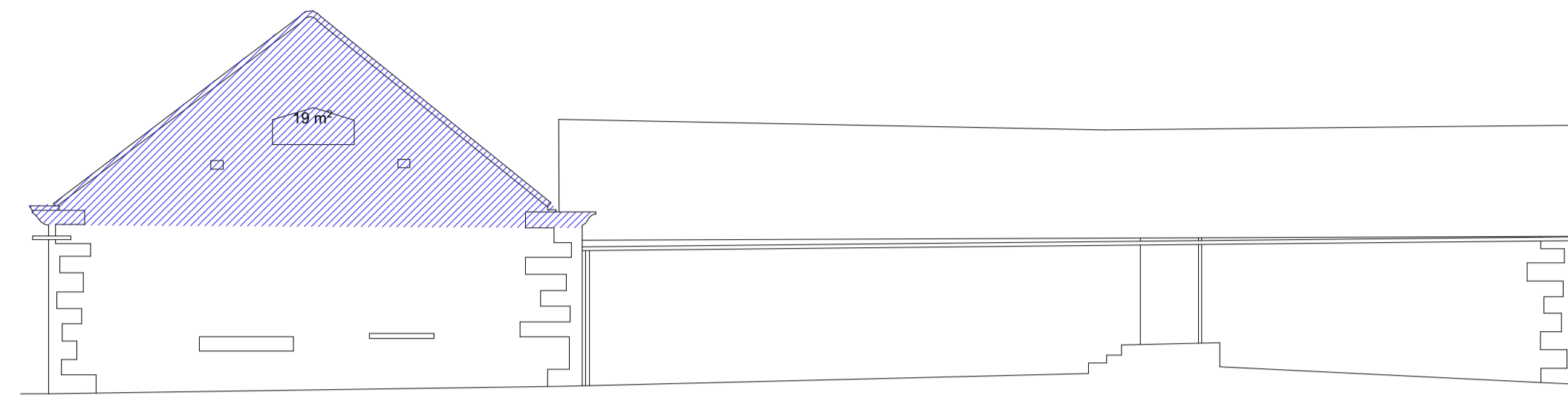


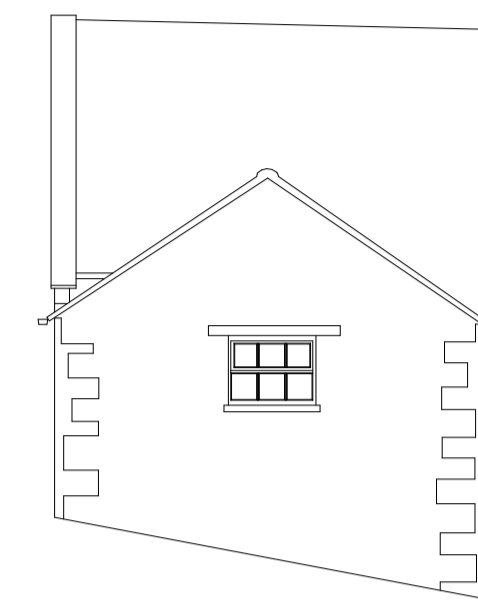
Key highlighting changes since survey:

-  Roof already collapsed
-  Roof removed Feb 2024 at the request of KMC
-  Wall removed Feb 2024 at the request of KMC



DATUM 60.000m 28.000m DATUM 60.000m

ELEVATION 1



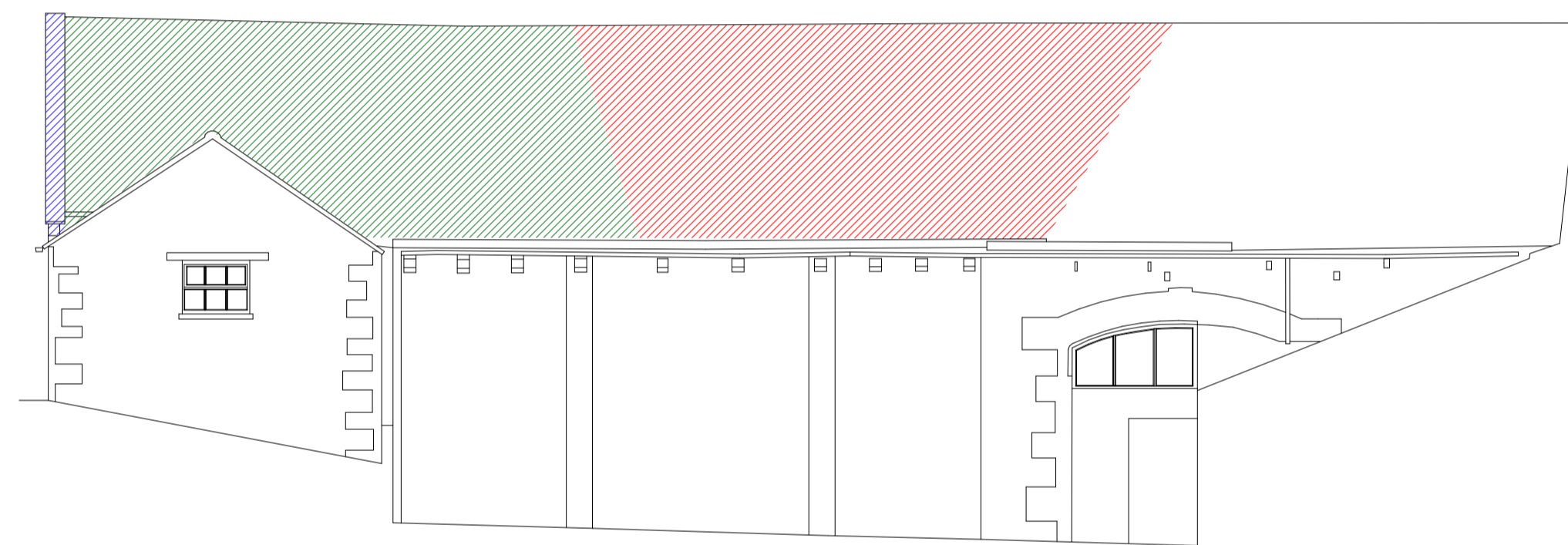
DATUM 60.000m DATUM 60.000m

ELEVATION 2



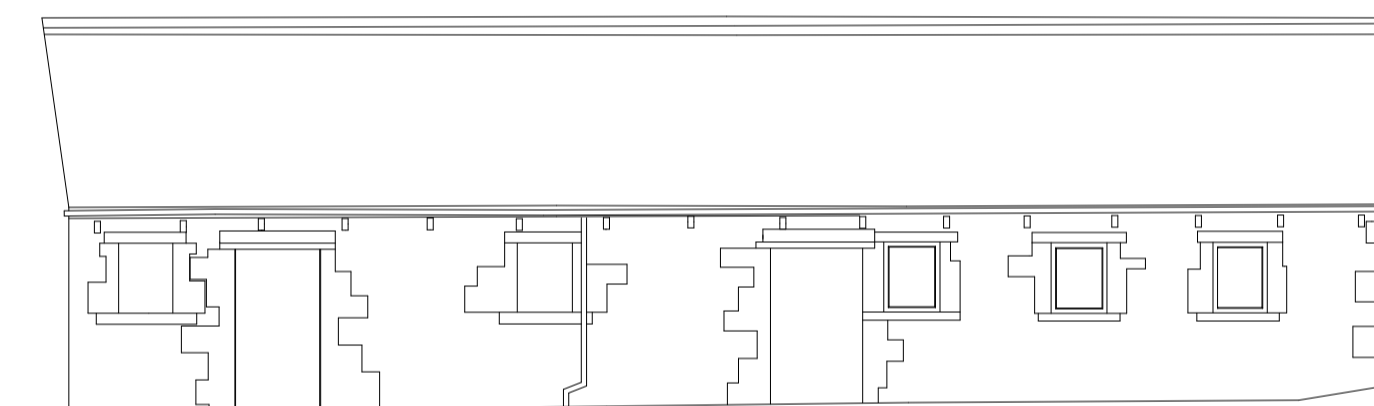
DATUM 60.000m 18.000m DATUM 60.000m

ELEVATION 3



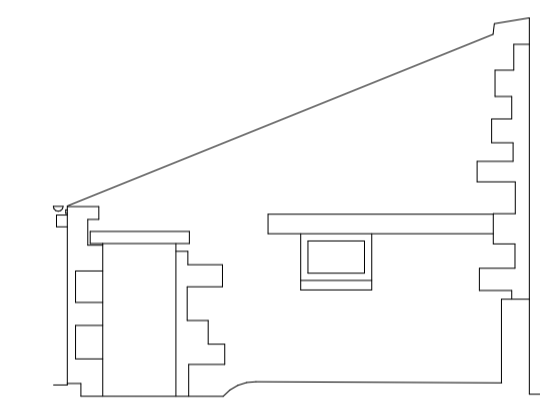
DATUM 60.000m 27.000m DATUM 60.000m

ELEVATION 4



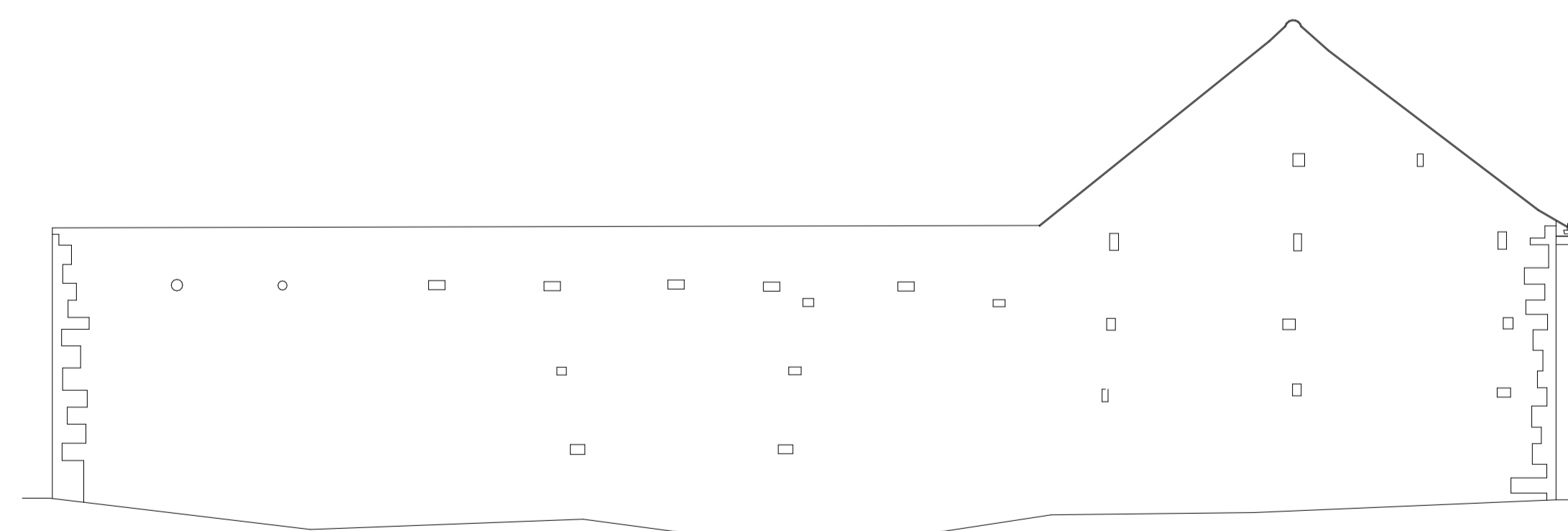
DATUM 60.000m 18.000m DATUM 60.000m

ELEVATION 5



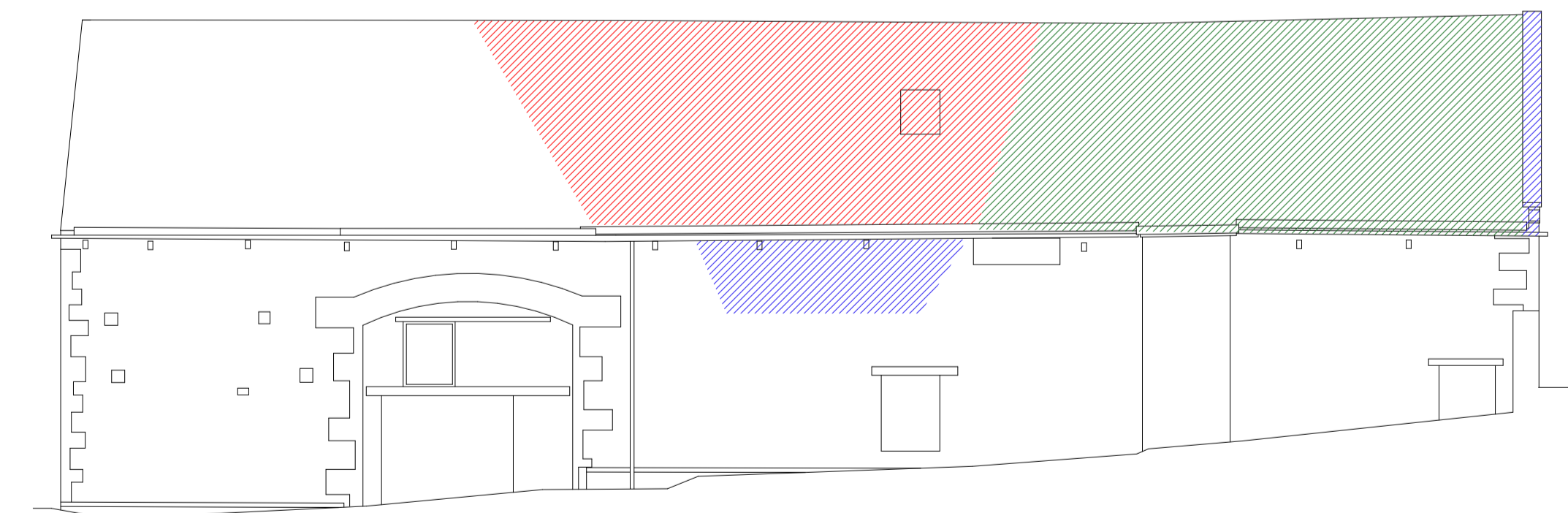
DATUM 60.000m 6.000m DATUM 60.000m

ELEVATION 6



DATUM 60.000m 28.000m DATUM 60.000m

ELEVATION 7



DATUM 60.000m 27.000m DATUM 60.000m

ELEVATION 8

LEGEND

AV	AIR VALVE	CC	CONCRETE COVER	FWS	FOLL WATER SEWER	LP	LAMP POST	ST	STOP TAP
B	BOLLARD	CM	CABLE MARKER	G	GULLY	MC	METAL COVER	SV	STOP VALVE
BH	BORHOLE	CP	CATCH PIT	GV	GAS VALVE	MH	MANHOLE	SWS	SURFACE WATER SEWER
BS	BUS STOP	CTV	CABLE TV LC	HV	HIGH VOLTAGE	MV	MEDIUM VOLTAGE	TL	TRAFFIC LIGHTS
BT	BRITISH TELECOM	DP	DOWN PIPE	IC	INSPECTION COVER	P	POST / POLE	TP	TELEGRAPH POLE
		ECP	ELEC. CABLE PIT	JB	JUNCTION BOX	RE	RODDING EYE	TH	THRESHOLD
		EP	ELEC. POLE/PYLON	KW	KERB WEIR	RS	ROAD SIGN	VP	VENT PIPE
		ER	EARTH ROD	LB	LITTER BIN	S	STAY	WM	WATER METER
		FH	FIRE HYDRANT	LH	LAMP HOLE	SC	STOP COCK	WO	WASH OUT