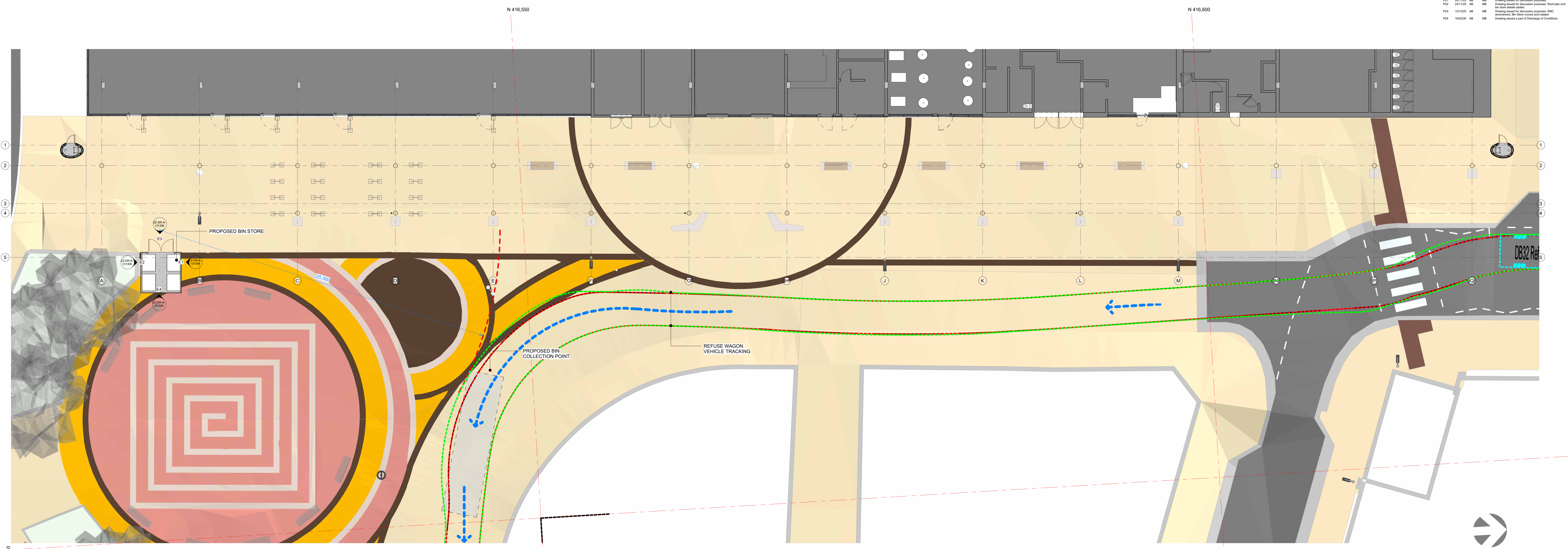
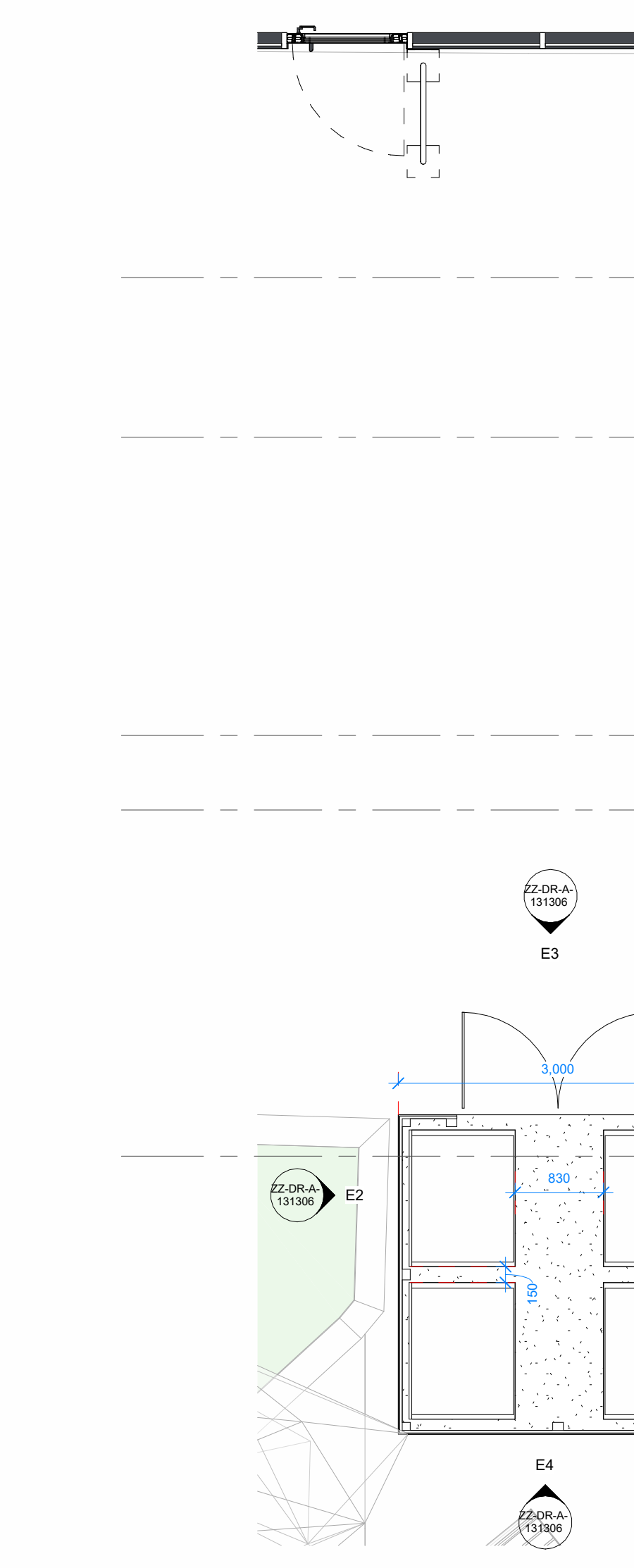


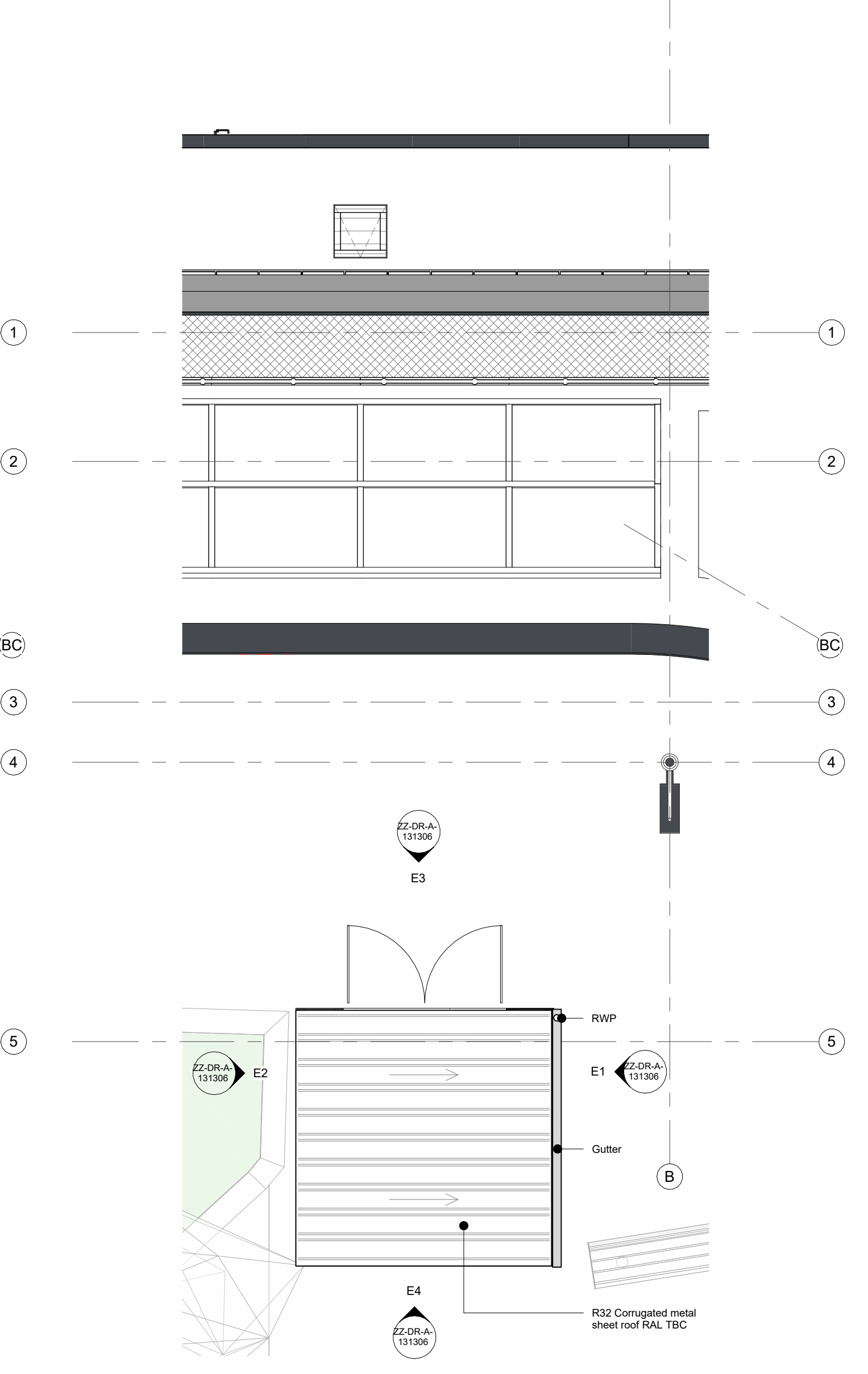
Rev	Date	By	Description
P01	20/12/23	MB	Design issued for discussion purposes
P02	20/12/23	MB	Bin store design update
P03	10/12/23	MB	Design issued for discussion purposes, RIBA
P04	10/12/23	MB	Design issued for discussion purposes, RIBA



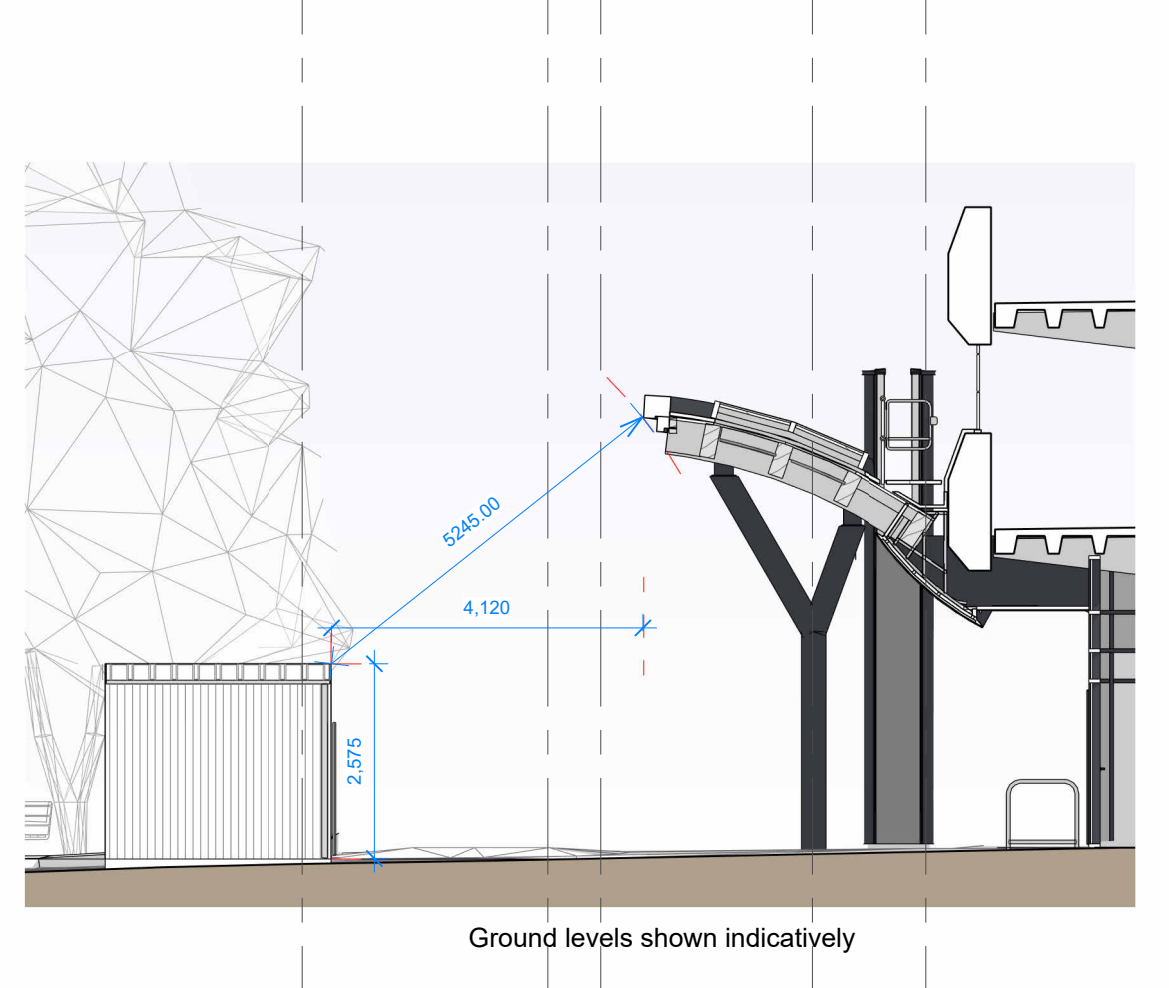
P1 Site Plan Bin Store Location  
Scale: 1 : 100



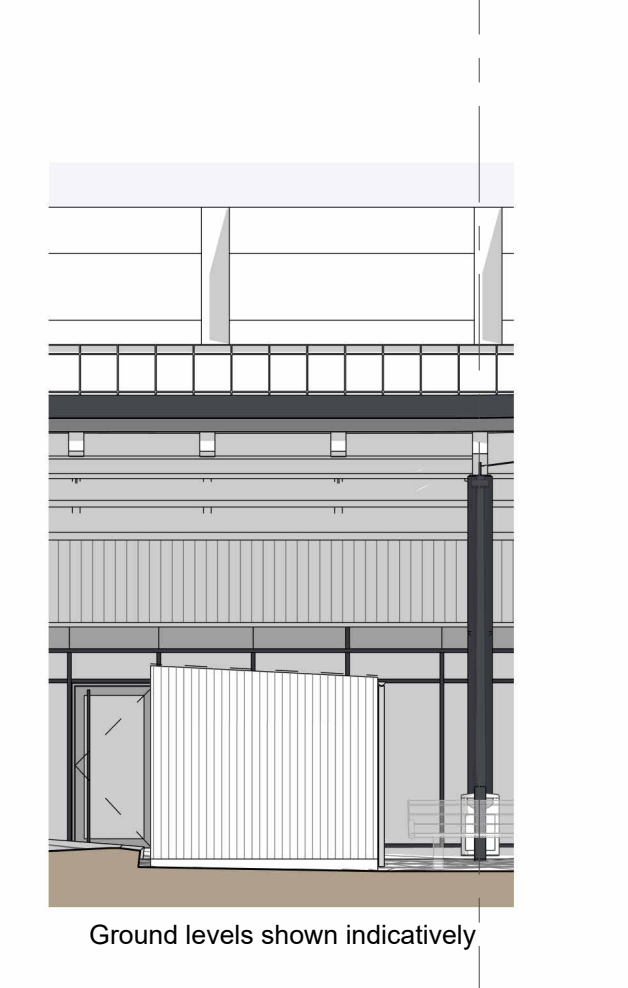
P2 Proposed Bin Store Plan  
Scale: 1 : 50



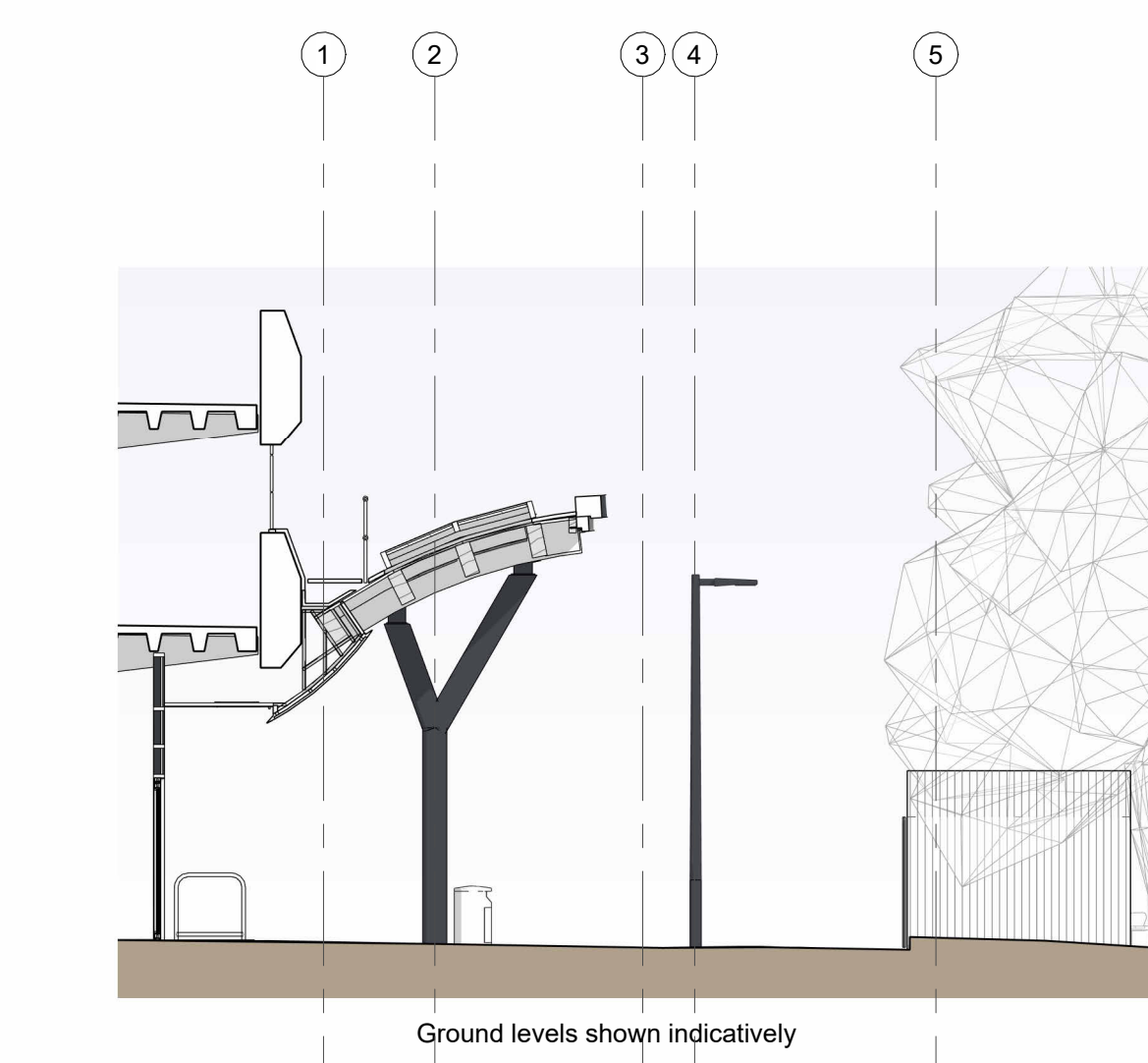
P3 Proposed Bin Store Roof Plan  
Scale: 1 : 50



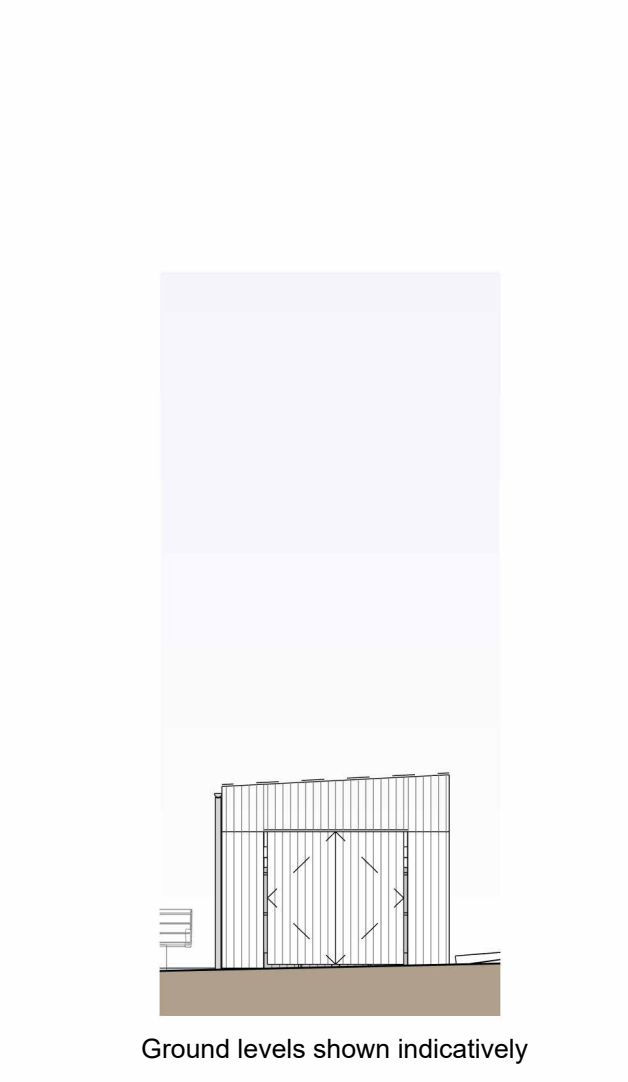
E1 Bin Store North Elevation  
Scale: 1 : 100



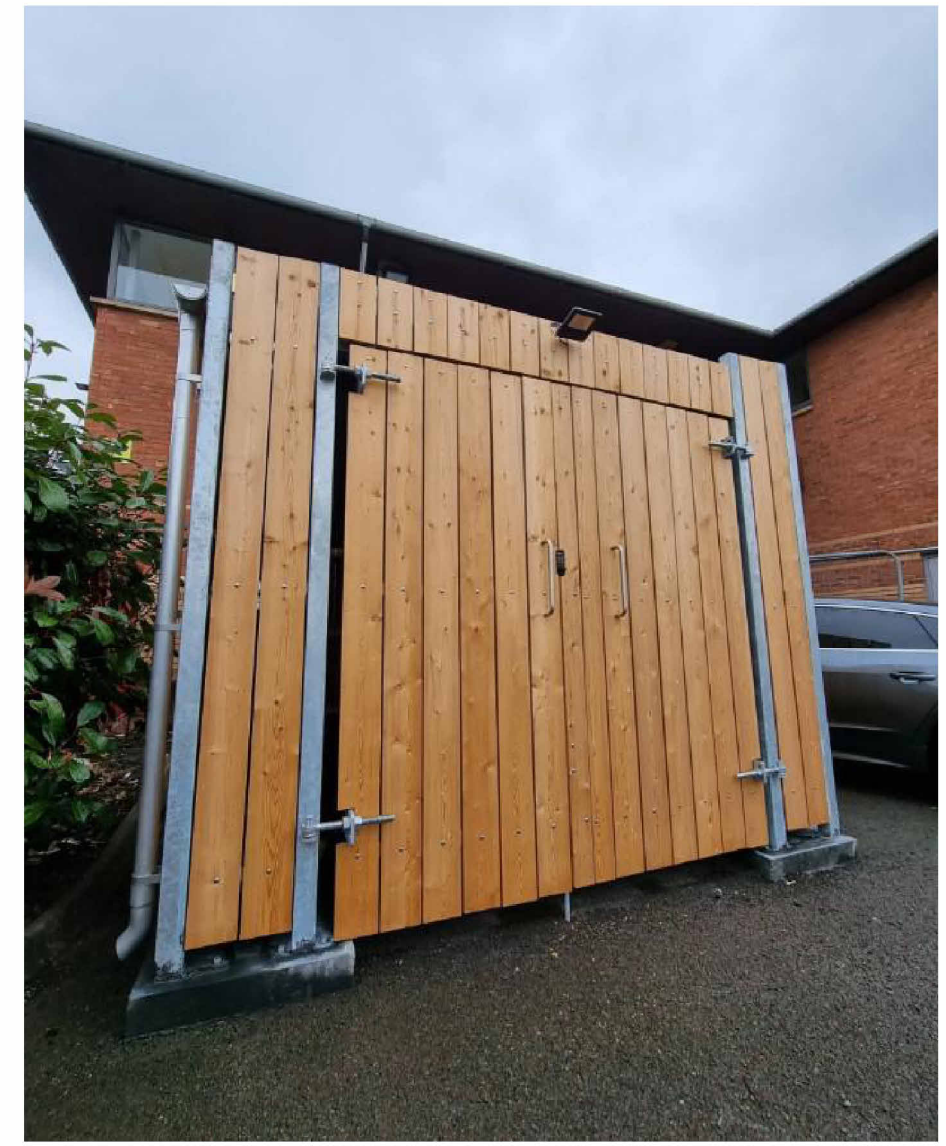
E4 Bin Store East Elevation  
Scale: 1 : 100



E2 Bin Store South Elevation  
Scale: 1 : 100



E3 Bin Store West Elevation  
Scale: 1 : 100

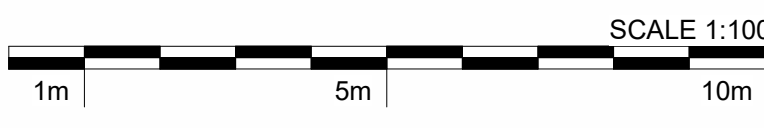


- Planning Materials Schedule**
- 1. Perforated Mesh Network / PPC Light Grey - Panels / PPC Dark Grey - Framing
  - 2. Gravel Margin - natural finish
  - 3. Sedum Roof - natural finish
  - 4. Manual System - natural finish
  - 5. PV Roof/Lights - PPC Dark Grey - Framing & Flashings
  - 6. PPC Eaves System - Two colour laser line system. Upper - Dark Grey / Lower - Mid Grey
  - 7. Glulam Roof Structure - Structural Beams - natural finish
  - 8. Steel Columns - PPC Dark Grey
  - 9. Perforated Metal Panels - PPC Light Grey
  - 10. Laminated single glazed panel - Clear Glass - Tint TBC
  - 11. Plywood Soffit - natural finish
  - 12. Plank effect soffit - PPC Timber effect planks.
  - 13. Removable Grillage Walking Gutter Galvanised - natural finish.
  - 14. Stone Cladding - To match WYCA Scheme.
  - 15. PPC Clad Louvers - PPC Dark Grey & Mid Grey
  - 16. Curtain Wall Shopfront - PPC Dark Grey - Frames PPC Light Grey - Doors & Spandrel
  - 17. Exposed Concrete Upstand - natural finish
  - 18. Utility Doors (Louvered and Solid) PPC Dark Grey
  - 19. LED flexible tape architectural lighting
  - 20. Sheffield Cycle Stands
  - 21. Close Boarded Timber Fence & Gate / Metal Post Supports

Bin Store supplied by Bollard Street (or equivalent)

Fire Rated Bin Stores -  
Fire rated bin store is engineered to meet fire rating class 'C' with a mild steel frame and fire-treated timber slats. Slats TBC - PEFC-certified Siberian larch. Lock Mechanism: LocnoxVinc/ mechanical code lock available in black or silver, or padlock fix. Typically 15 mm thickness x 144 mm vertical boards (image shows bin store clad in Siberian larch). Mild steel support frame structure hot-dip galvanised to BS EN ISO 1461:2009 for maximum corrosion resistance, powder coated in a RAL TBC. Product Code: BINST.FRBS

www.bollardstreet.com/product/fire-rated-bin-stores/



This drawing, the works and concepts depicted are copyright of Stephen George + Partners LLP and may not be reproduced or made use of, either directly or indirectly without express written consent. All heights, levels, sizes and dimensions to be checked on site before any work is put to hand. Information shown on this drawing that is produced by others has not been verified by Stephen George + Partners LLP and no liability is accepted for its accuracy. This document is prepared for the sole use of the documented recipient and Stephen George + Partners LLP accepts no liability for use of this document by parties other than those for whom it was prepared or for purposes other than those for which it was prepared.

Do not scale from this drawing for purposes other than the planning application. Red Line Boundary based on OS Data and NOT confirmed as the Legal Boundary.