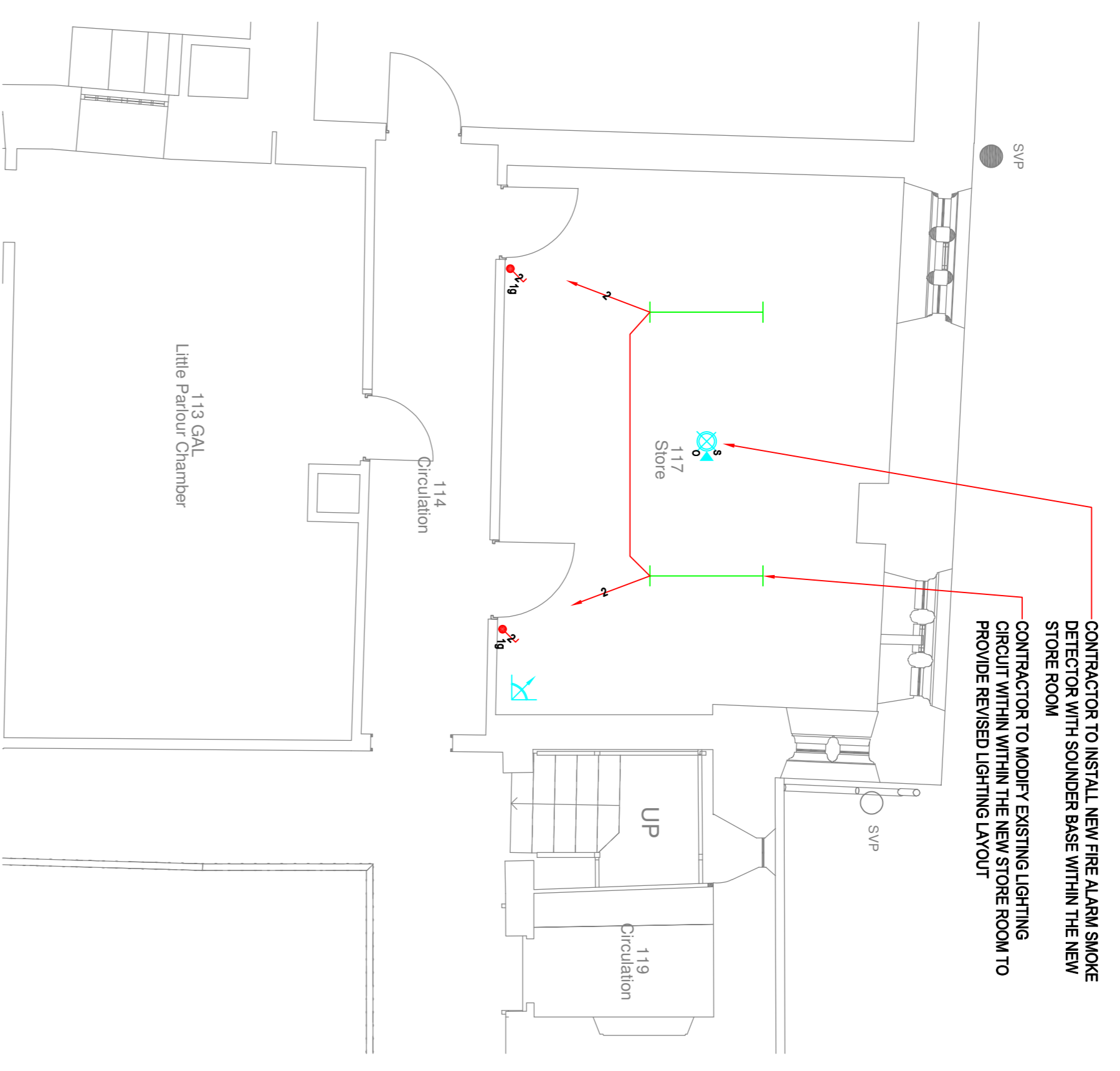
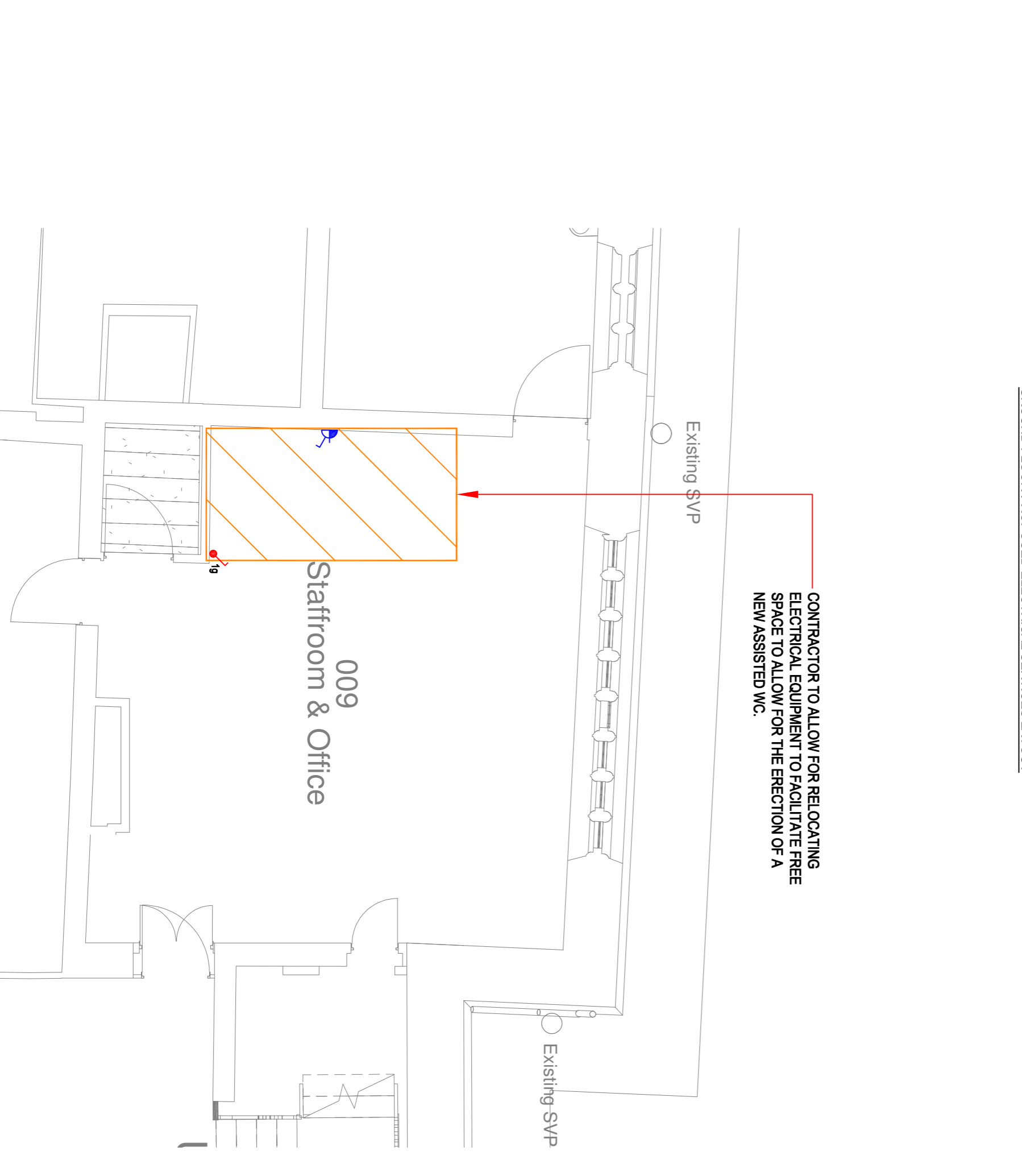


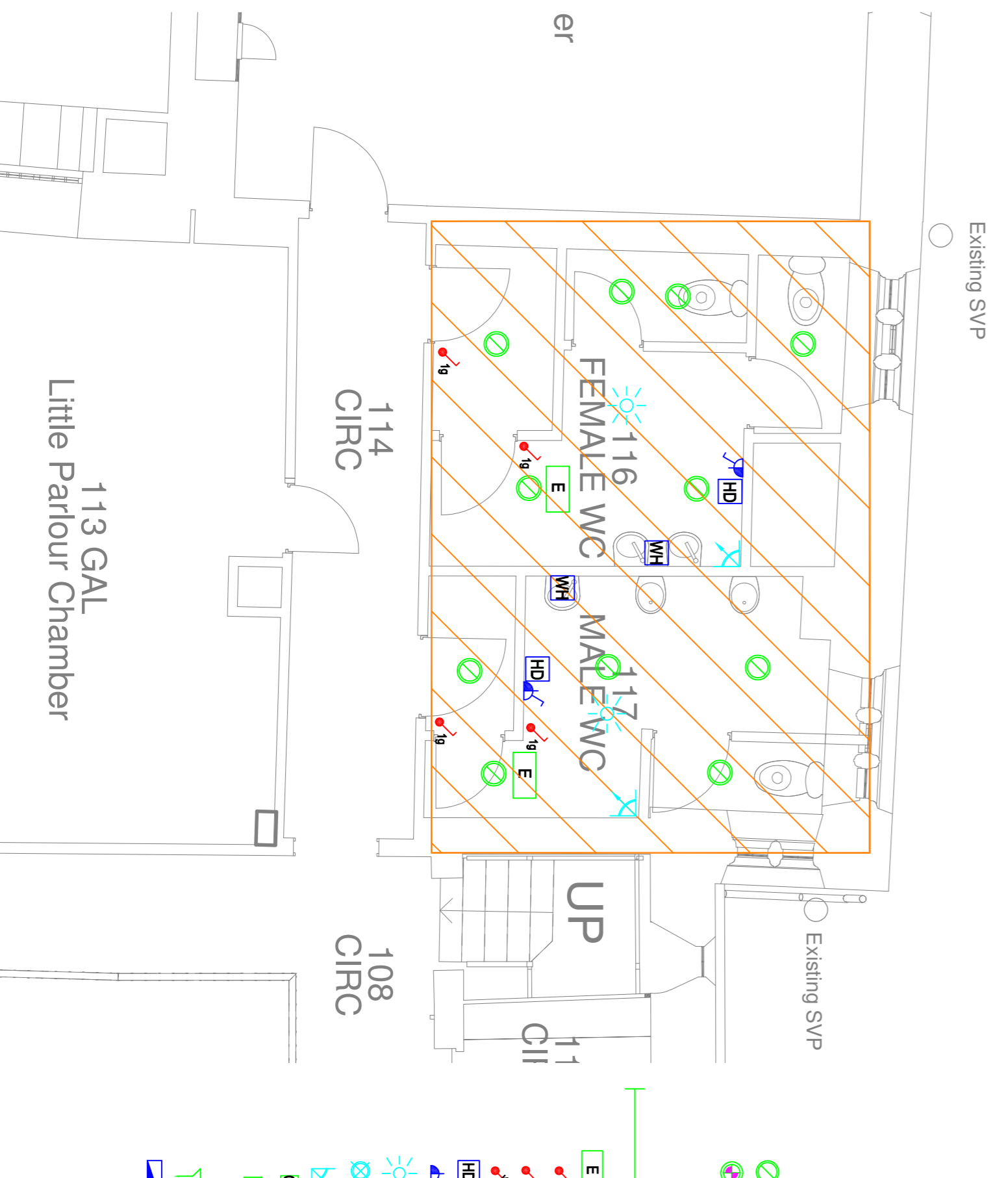
GROUND FLOOR PROPOSED ELECTRICAL SERVICES LAYOUT



FIRST FLOOR PROPOSED ELECTRICAL SERVICES LAYOUT



GROUND FLOOR AS EXISTING SERVICES TO BE STRIPPED OUT



FIRST FLOOR AS EXISTING SERVICES TO BE STRIPPED OUT

- LEGEND**
- RECESSED LUMINAIRE
 - SURFACE CIRCULAR LED LUMINAIRE WITH WHITE RIM AND OPTIC LENS & COMPLETE WITH INERFAL HAND DRYER WITH 1.5m² FLUSH CONDENSATION TRAY. TO BE MOUNTED WITHIN THE NEW STORE ROOM AT HEIGHT AS RECOMMENDED BY THE EQUIPMENT MANUFACTURER.
 - PRESENCE SENSOR AS LISTED (BS8300/2025/64MM LIGHT AS WVC INHIBITED)
 - 150mm LINEAR SURFACE MOUNTED LED STRIP LIGHT AS WVC INHIBITED
 - EMERGENCY BULKHEAD
 - LIGHT SWITCH - WHERE 'n' - No. OF GANGS
 - 3 POLE FAN SWITCH (ISOLATES L, SW & N)
 - EMERGENCY LIGHTING TEST / ET SWITCH
 - HAND DRYER
 - SWITCHED FIBER CONNECTION UNIT
 - CEILING MOUNTED BEACON
 - OPTICAL SMOKE DETECTOR COMPLETE WITH SOUNDBEACON
 - INTRUDER ALARM DETECTOR
 - CALL ASSIST CALL CONTROLLER/SOUNDBEACON/ASSURANCE UNIT
 - CALL ASSIST CALL/REST/ASSURANCE UNIT
 - CALL ASSIST OVERDOOR SOUNDBEACON/INDICATOR
 - CALL ASSIST PULL CORD UNIT
 - SINGLE PHASE DB

- HATCHING LEGEND**
- I) CAREFULLY PROTECT ALL EXISTING FIRE ALARM WIRING, FIRE ALARM INSTALLATION IS TO BE MODIFIED & REUSED ALLOW FOR TEMPORARY DISCONNECTION.
 - II) CAREFULLY DISCONNECT & REMOVE ALL EXISTING POWER SOCKETS, HAND DRYERS AND WATER HEATERS AND SCRAP.
 - III) SAFELY DISCONNECT & STRIP/OUT ALL POWER SUB-CIRCUIT WIRING SERVING THE INSTALLATIONS WITHIN THIS AREA AS THESE ARE NOW REDUNDANT.
 - IV) CONTRACTOR TO PROTECT AND MAINTAIN THE EXISTING INTRUDER ALARM INSTALLATION AS THIS IS TO BE MODIFIED TO SERVE THE REVISED LAYOUT ALLOW FOR TEMPORARY DISCONNECTION & REPLACEMENT OF ALL PIR DETECTORS TO FACILITATE THE STRIP-OUT WORKS.

- NOTES**
1. CONTRACTOR TO NOTE THAT THE BUILDING IS A LISTED PERIOD BUILDING AND SO MUST ALLOW EXTREME CARE WHEN DISCONNECTING AND STRIPPING OUT SERVICES. ALL DISCONNECTION AND STRIP-OUT WORKS TO BE AGREED WITH THE CLIENT'S ARCHITECT PRIOR TO COMMENCING.
 2. THIS DRAWING DOES NOT INDICATE ALL SERVICE RUNS. THE CONTRACTOR SHALL VISIT SITE AND CONDUCT HIS OWN SURVEY TO DETERMINE THE FULL EXTENT OF THE EXISTING SERVICES INSTALLATION.
 3. THE CONTRACTOR SHALL MAKE GOOD ALL SURFACES FOLLOWING STRIP OUT AND SHALL ENSURE THEY ARE RESTORED TO THEIR PREVIOUS CONDITION TO THE SATISFACTION OF THE CLIENT.
 4. THE CONTRACTOR SHALL PROTECT ALL ADJACENT SURFACES, FINISHES, FITTINGS, FIXTURES ETC. DURING THE ENTIRE WORKS.
 5. ALL ISOLATIONS OF ELECTRICAL SERVICES TO BE PREPARED AND FULLY AUTHORISED BY BUILDING MANAGER.
 6. ANY RENOUITING OF EXISTING SERVICES TO MAINTAIN CONTINUITY OF SERVICES TO ADJACENT AREAS SHALL BE INCLUDED FOR AND CARRIED OUT BY THE CONTRACTOR WITH ALL COSTS BEING INCLUDED FOR WITHIN THE CONTRACTORS TENDER SUM.
 7. ALL ELECTRICAL INSTALLATION WORKS TO BE UNDERTAKEN BY THE CONTRACTOR IN ACCORDANCE WITH THE REQUIREMENTS OF BS7671 (IET REQUIREMENTS FOR ELECTRICAL INSTALLATIONS, 2018) INCLUDING ALL AMENDMENTS TO DATE.
 8. CONTRACTOR TO APPOINT INCUMBENT FIRE ALARM MAINTAINERS 'ROSSE SYSTEMS' TO UNDERTAKE AND COMMISSION ALL MODIFICATIONS TO THE BUILDING FIRE ALARM AS INDICATED ON THIS DRAWING. ALL MODIFICATIONS TO BE INSTALLED IN ACCORDANCE WITH BS8389 PART 1- 2025. ALL WORKS IN RELATION TO THE FIRE ROSSSE SYSTEMS CONTRACT DETAILS - 01274 859015.
 9. CONTRACTOR TO ATTEND SITE TO FULLY SURVEY THE EXTENT OF THE WORKS PRIOR TO TENDER SUBMITTAL. CLAIMS FOR LACK OF KNOWLEDGE WILL NOT BE ACCEPTED.

| Rev | Revision Details | Date | By | Chkd | App |
|-----|---------------------|----------|----|------|-----|
| - | ISSUED FOR APPROVAL | 21/04/26 | JS | GS | GS |

BSS
Building Services Solutions Ltd
 Charles Roberts Office Park
 Charles Street
 Henbury
 Warrington
 Tel: 0124 283278
 Email: enquiries@bss-uk.net
 Web: www.bss-uk.net

Client: **Kirklees Council**

Project: **Oakwell Hall - Fabric Repairs**

Drawing Title: **Existing & Proposed Electrical Services Layout**

Scale: **1:50@A1**

Status: **APPROVAL**

Drawn By: JS Date: 21/04/26 Checked By: GS Approved By: GS

Drawing No. **J26010/E/100**

This drawing is not intended to be used in whole or part other than for the intended purpose and project as defined on this drawing. Refer to the contract for full terms and conditions.