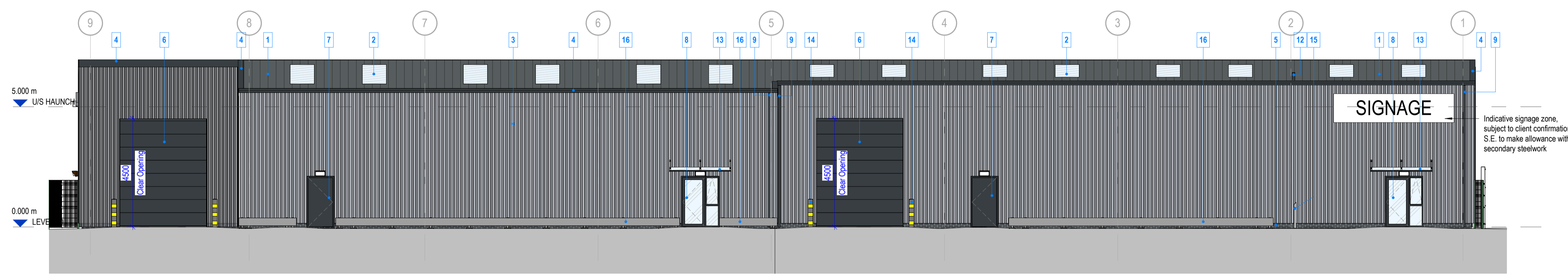
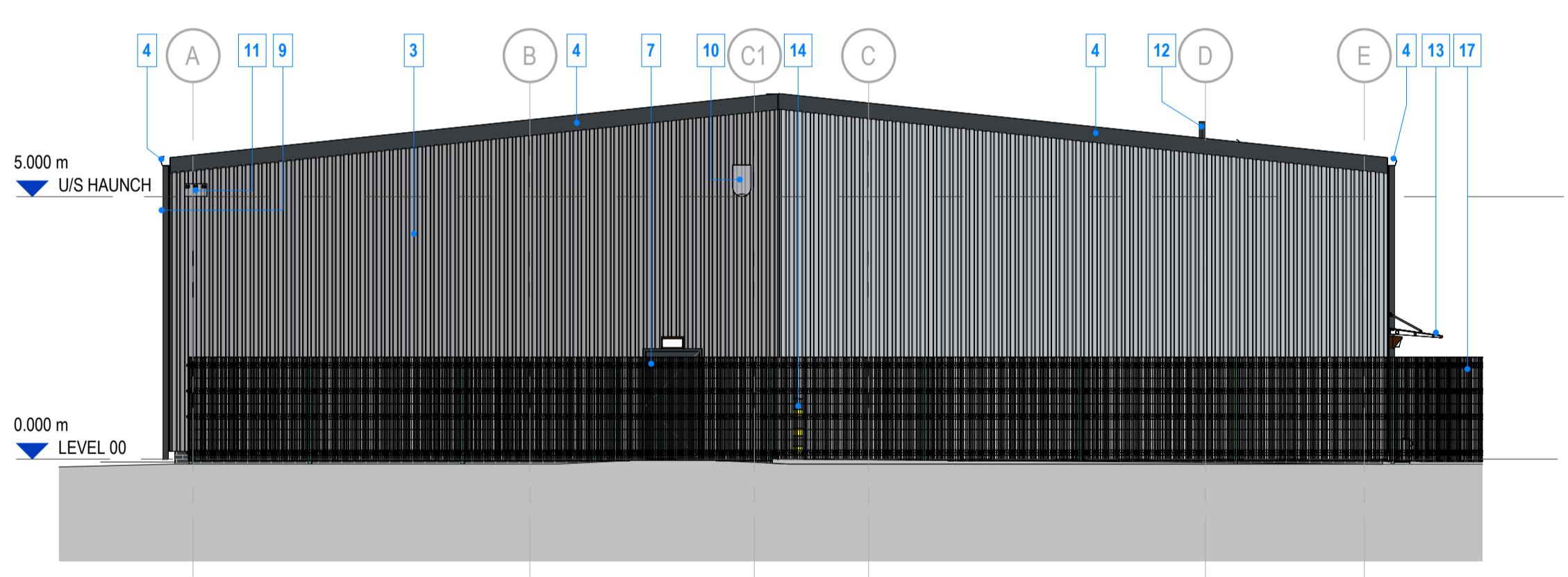


**ELEVATION KEY PLAN**  
1 : 500

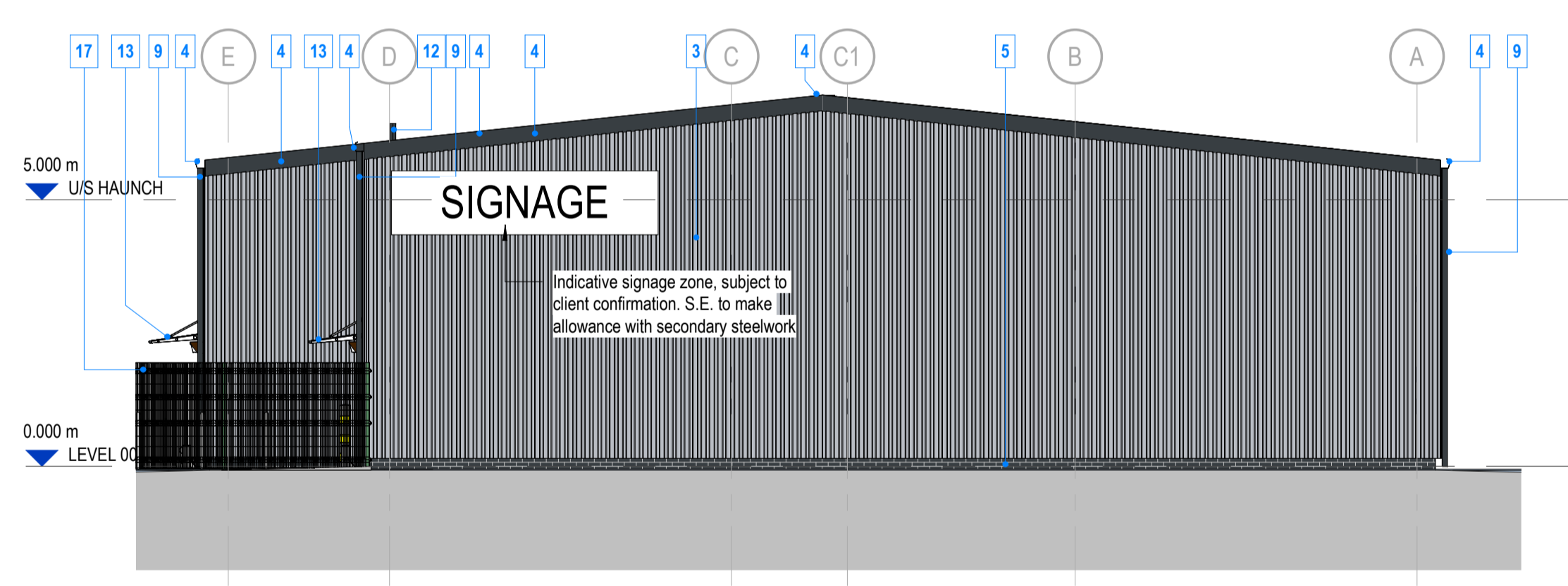
Elevation Key			
1	Metal Roof Cladding	Protex PRX-RS-01 Built-up Twin Skin Trapezoidal Metal Cladding at a 6 degree pitch. System to be 290mm thickness, inclusive of 260mm thickness of insulation (insulation to be supplied by a Protex Approved Supplier) to achieve minimum 0.18 W/m <sup>2</sup> K U-Value required by Building Regs. part L. External face to be GreenCoat Pural BT finish. Refer to Protex standard details and Approved suppliers list for all fixing/installation details.	Merlin Grey (RAL 180 40 05)
2	Rooflights	Zenon, or similar approved, GRP Rooflights 1000 x 5000mm. Refer to 'GD19-MCRMA-sealants-guidance-document-1' for approved installation guidance. 2.2 W/m <sup>2</sup> K Min. U-Value to be achieved as per Building Regs. Part L	
3	Metal Wall Cladding	Protex PRX-FWS-01 Built-up Twin Skin Trapezoidal Metal Cladding laid vertically. System to be 190mm thickness, inclusive of 160mm thickness of insulation (insulation to be supplied by a Protex Approved Supplier) to achieve minimum 0.26 W/m <sup>2</sup> K U-Value required by Building Regs. part L. External face to be GreenCoat Pural BT finish. Refer to Protex standard details and Approved suppliers list for all fixing/installation details.	White Aluminium (RAL 9006)
4	Trims / Flashings	All wall/roof trims and flashings to polyester power coated and preformed (where suitable). Inclusive of guttering and ridge flashings	Anthracite Grey (RAL 7016)
5	Low Level Upstand	Brick & Block upstand from foundation to 150mm above FFL. Anthracite grey facing brickwork, 102.5mm thickness, jointed with natural grey mortar in all external areas above floor level with 100mm standard Celcon blockwork below ground level to foundation. 100mm cavity with 50mm insulation to internal face. An internal leaf of 100m Celcon blockwork.	Anthracite Grey (RAL 7016)
6	Vehicle Loading Door	Level Access ASSA ABLQY Crawford OH1042P, or similar approved, Insulated Overhead Sectional Door. 3600 (W) x 4500mm (H) clear opening. Mechanically controlled with push button control panel	Anthracite Grey (RAL 7016)
7	Personnel Fire Escape Door	Insulated PPC steel fire escape door. Final exit doors should have simple fastenings able to be operated quickly in an emergency, e.g. panic bar/push pad door release, designed to BS EN 1125 and BS EN 179	Anthracite Grey (RAL 7016)
8	Glazed Entrance Door	Glazed door and full height window with PPC aluminium frame. Semi-glazed door to be fitted with sealed double glazing with Band A double glazing to achieve a 1.2 U Value or triple glazing to achieve 1.0 U Value with thermally broken frames.	Anthracite Grey (RAL 7016)
9	Rainwater Pipe	PPC aluminium rainwater pipes to discharge directly in drainage system	Anthracite Grey (RAL 7016)
10	Bat Box	In keeping with Planning Condition No.17 - the allowance of "1 new bat box"	Anthracite Grey (RAL 7016)
11	Bird Box	In keeping with Planning Condition No.17 - the allowance of "1 new bird box"	Anthracite Grey (RAL 7016)
12	SVP	Soil Vent Pipe to Office Amenity Area	Anthracite Grey (RAL 7016)
13	Glazed Canopy	Glazed Canopy on PPC metal frame to be toughened or laminated break-safe safety glass to BS EN 12600:2002, BS EN 14179 or BS EN ISO 12543-1 and Part K of the current building regulations.	Anthracite Grey (RAL 7016)
14	Service Yard Bollard	Planted base and concrete filled steel service yard bollard PPC black with painted yellow stripes	Hot Black (RAL 9005) & Traffic Yellow (RAL 1023)
15	Mitred Stainless Steel Bollard	Marshalls Rhino RS004 mitred stainless steel bollard with planted base, or similar approved	316L Brushed Stainless Steel
16	Armco Barrier	Galvanised Steel Armco Barrier	Galvanised Steel
17	Fencing	Palisade fencing	Colour to match existing
18	External Door Lighting	External over-door down lighting in accordance with BS 5266-1 and the Regulatory Reform (Fire Safety) Order 2005. Casing to be PPC RAL 7016	Anthracite Grey (RAL 7016)



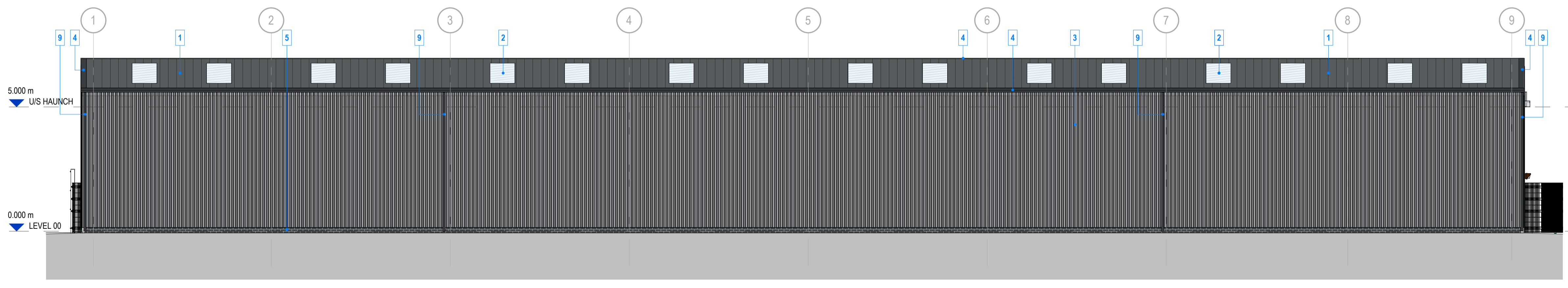
**BUILDING ELEVATION 1**  
1 : 100



**BUILDING ELEVATION 2**  
1 : 100



**BUILDING ELEVATION 3**  
1 : 100



**BUILDING ELEVATION 4**  
1 : 100

**WORK IN PROGRESS**

		A: Bates Mill Cohe Road Huddersfield HD1 3AG T: 01484 424 008 F: 01484 512 305 E: design@farrarbamforth.co.uk W: www.farrarbamforth.co.uk	
Client: DM TEXTILE MACHINERY LTD			
Project Name: PROPOSED INDUSTRIAL BUILDING			
Project Address: SPA FIELDS INDUSTRIAL ESTATE, SLAITHWAITE, HUDDERSFIELD, HD7 5BB.			
Reference:			
Project	Originator	Functional	Spatial
25C01	FBA	00	ZZ
DR	A	2100	
Title: PROPOSED GA ELEVATIONS			
Status:			
Code	Description	Revision:	
A4	TECHNICAL DESIGN	C02	
Created By:	Authorised By:	Date:	Scale at A1:
EG	JH	04.25	As indicated

This document is © Farrar Bamforth Architecture Ltd. Drawing measurements shall not be obtained by scaling. Verify all dimensions prior to construction or product manufacture, if in doubt, contact the document author. Immediately report any discrepancies on this document to Farrar Bamforth Architecture Ltd. This document is to be read in conjunction with associated models, specifications and related consultants / supplier documents.