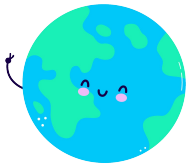
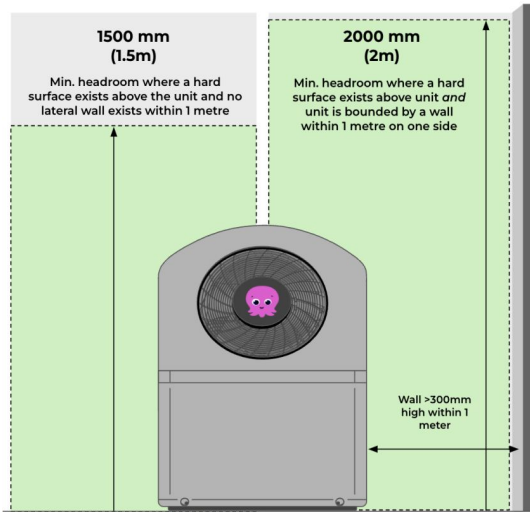
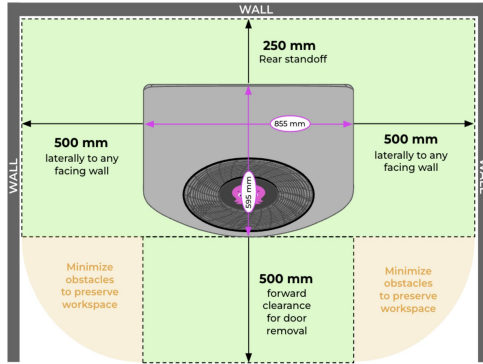


Cosy 9 Operational Clearances / Data Sheet



Cosy 9		
Parameter	Units	Value
Nominal capacity	kW	10.00
Heating capacity (A7/W50)	kW	9.80
Coefficient of performance (A7/W35) @8.1kW - EN14511	COP	4.65
Coefficient of performance (A7/W55) @8.0kW - EN14511	COP	2.96
Coefficient of performance (A7/W65) @7.9kW - EN14511	COP	2.42
Length	mm	855
Height	mm	1375
Depth	mm	595
Weight	kg	125
Sound power level (Heating, A7W55)	dBa	56.1
Sound power level (Heating, A7W65)	dBa	56.7
Maximum flow temperature	(°C)	70
Maximum operating pressure	Bar	32
Maximum volume flow	L/m	25
Minimum volume flow	L/m	7
Minimum system volume	L	100
Refrigerant type	-	R290
Refrigerant charge weight	kg	0.83
Electrical supply	-	230V/1ph/50hz
Starting technology	-	Inverter
Compressor type	-	Scroll
Compressor oil type	-	HATCOL 4467
Pipe connections	-	G1" flat face
Rated max current	Amps	20
MCB type	-	B Curve
RCD type	-	B
Maximum cable length (Modbus)	m	50
IP rating	-	IPX5
Fan maximum input power	W	170
Fan maximum rotor speed	Min ⁻¹	970