

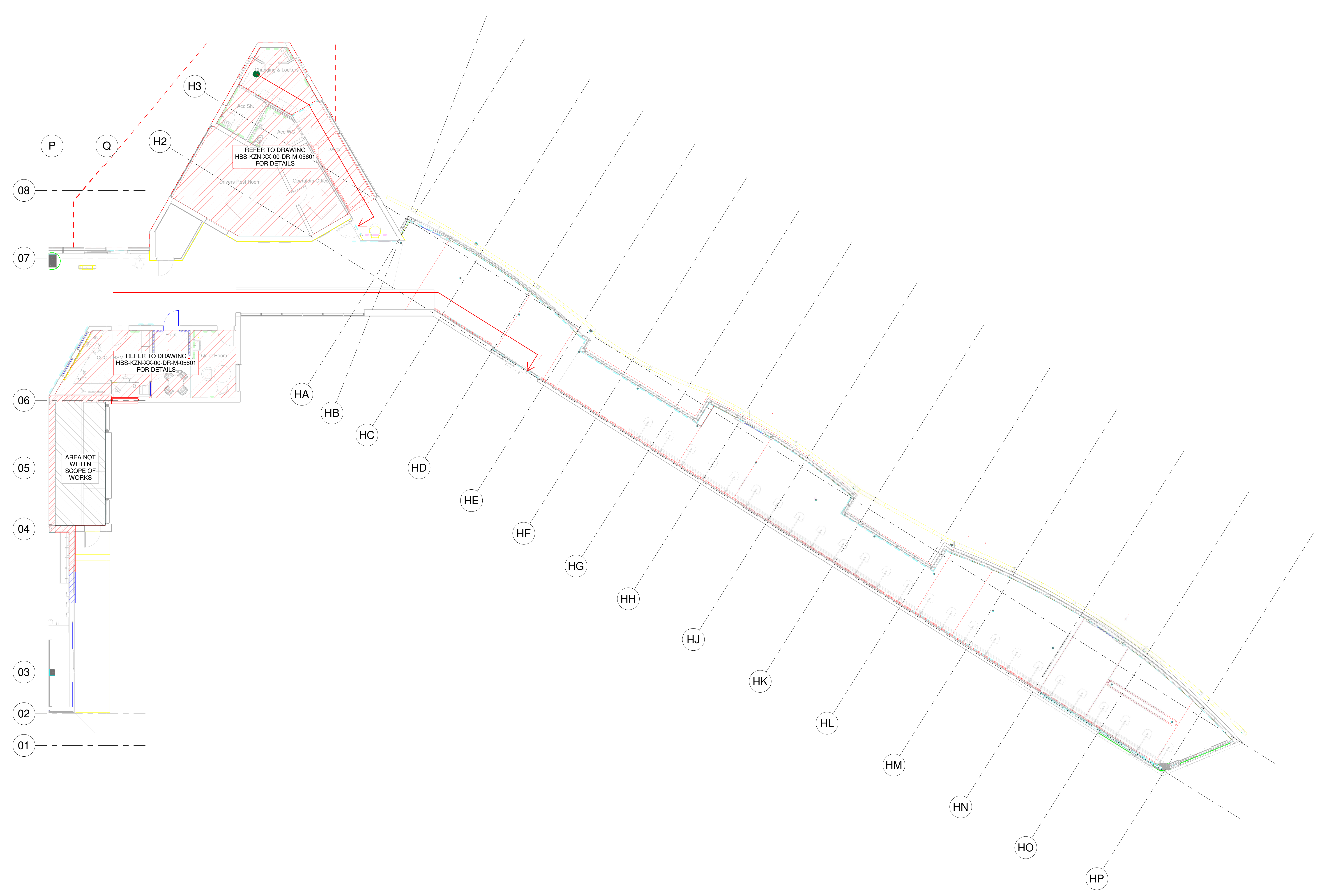
SAFETY, HEALTH & ENVIRONMENTAL INFORMATION
 Refer to the project specific risk assessment and design criteria for the M&E services installation. The installing contractor must prepare method statements for the installation works and agree all works in advance with the main contractor.

- GENERAL NOTES**
- REFER TO ARCHITECTS AND STRUCTURAL ENGINEERS DRAWINGS AND MODELS FOR BUILDING AND CONSTRUCTION DETAILS.
 - THIS DRAWING IS TO BE READ IN CONJUNCTION WITH THE RELEVANT TECHNICAL SPECIFICATIONS AND ALL OTHER DRAWINGS.
 - DIMENSIONS WHERE SHOWN ARE IN MILLIMETRES.
 - DO NOT SCALE FROM THIS DRAWING.
 - PLEASE NOTE THIS DRAWING MUST BE READ IN PRINTED COLOUR.

- HEATING AND COOLING NOTES**
- ALL PIPEWORK PASSING THROUGH WALLS TO BE FIRE STOPPED. PENETRATIONS THROUGH FIRE RATED BARRIERS BY MAIN CONTRACTOR. PIPEWORK INSULATION TO BE IN ACCORDANCE WITH BS 5422 AND IDENTIFIED IN ACCORDANCE WITH BS 1110.
 - ALL REFRIGERANT PIPEWORK SHALL BE FIXED USING PROPRIETARY REFRIGERATION BRACKETS AND TRAYWORK.
 - ALL TRAYWORK TO BE COMPLETE WITH REFRIGERATION IDENTIFICATION EVERY 1.2m.
 - ALL CASSETTE UNITS AND CONDENSING UNITS TO BE INSTALLED COMPLETE WITH IDENTIFICATION TAGS, CORRECT TO THE CURRENT LAYOUT DRAWING REFERENCE NUMBERS.
 - CONDENSATE DRAINAGE TO BE RUN IN PVC AND LAID TO FALL ALONG ITS ENTIRE LENGTH.

- HEATING ABBREVIATIONS**
- HTHW HIGH TEMPERATURE HOT WATER
 - MTHW MEDIUM TEMPERATURE HOT WATER
 - LTHW LOW TEMPERATURE HOT WATER
 - CHW CHILLED WATER
 - HTG HEATING
 - VT VARIABLE TEMPERATURE
 - CT CONSTANT TEMPERATURE
 - F&R FLOW AND RETURN
 - └─┘ (SERVICE) FLOW
 - └─┘ (SERVICE) RETURN
 - F&E FEED AND EXPANSION
 - OV OPEN VENT

- FIRE RATED WALLS:**
- 60 MINUTE FIRE COMPARTMENT LINE
 - 30 MINUTE FIRE COMPARTMENT LINE



1 HENRY STREET HEATING AND COOLING LAYOUT
 1 : 100

P03	STAGE 4 ISSUE	CT	30/09/25
P02	STAGE 3 PRELIMINARY ISSUE, UPDATED ARCHITECTURE INCORPORATED.	CT	20/05/24
P01	STAGE 3 PRELIMINARY ISSUE	CT	18/04/24
REV	DESCRIPTION	BY	DATE

KAIZEN
 Consulting Engineers
 www.kaizen-ce.com e: info@kaizen-ce.com

CLIENT
WILLMOTT DIXON

ARCHITECT
West Yorkshire Combined Authority

PROJECT
AHR
 HUDDERSFIELD BUS STATION

DRAWING TITLE
MECHANICAL SERVICES
 HENRY STREET
 HEATING AND COOLING LAYOUT

CHECKED	DATE	DRAWN	SCALE
SA	19/04/24	RC	1:100 @ A0

DRAWING NUMBER
STAGE 4
 HBS-KZN-XX-00-DR-M-05602 [STATUS] REV