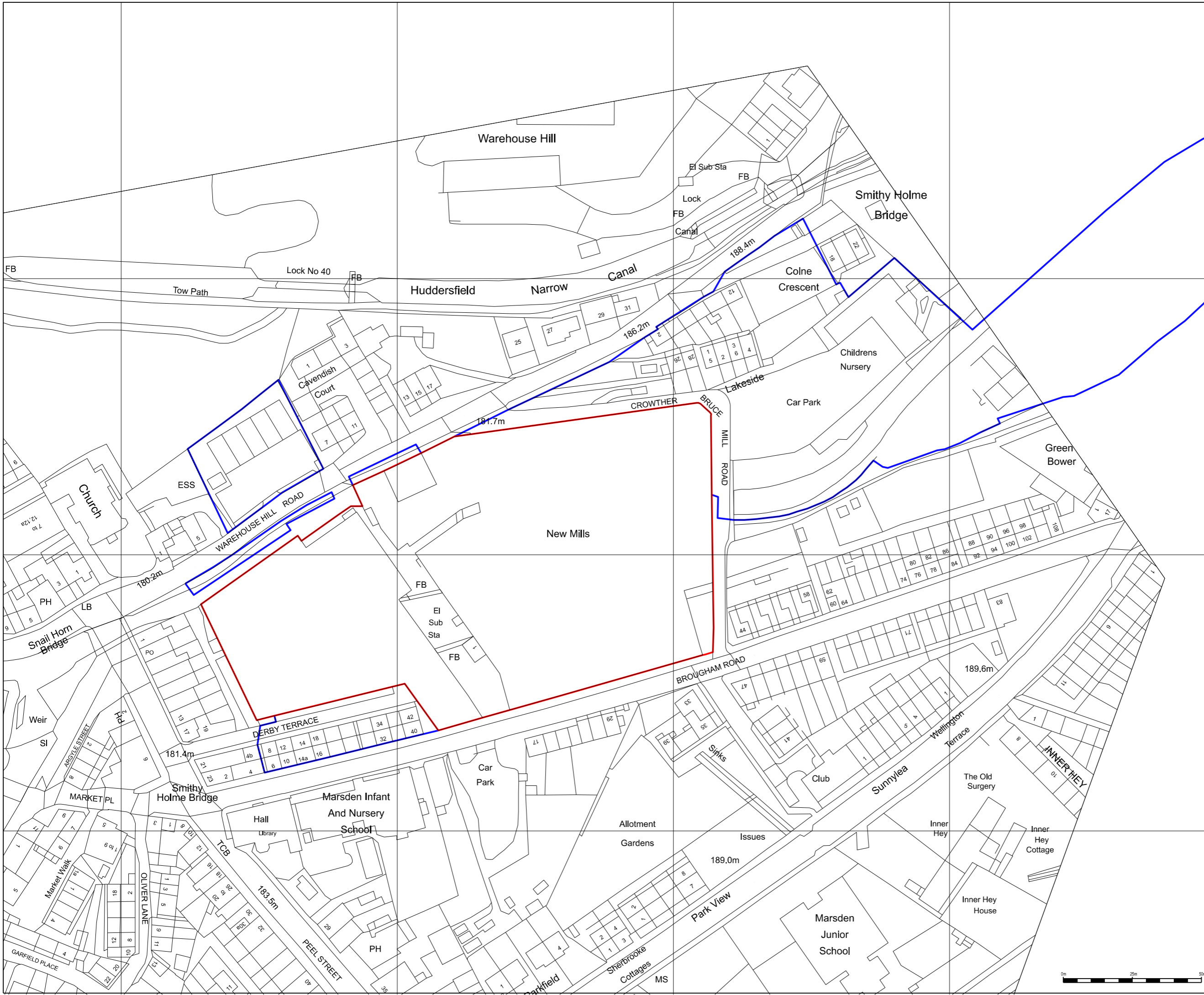




## **APPENDIX A – EXISTING SITE INFORMATION**

Notes:  
 This drawing is the sole copyright of KPP Architects Ltd and reproduction in any form is forbidden unless permission is obtained in writing.  
 Do not scale from this drawing. Any discrepancies on site should be brought to the attention of KPP Architects Ltd.  
 Work and materials must comply with the current building regulations and codes of practice and be read in conjunction with building specifications and other sub-contractors information. All materials are to be installed in strict accordance with the recommendations of the manufacturers.



P1	FOR DISCUSSION	SF	.	07.02.25
Rev	Description	By	Chkd	Date
Client				

**JOHN EDWARD CROWTHER Ltd**

Project Title  
**PROPOSED REGENERATION OF  
 NEW MILLS  
 MARSDEN**

Drawing Title  
**SITE LOCATION PLAN**

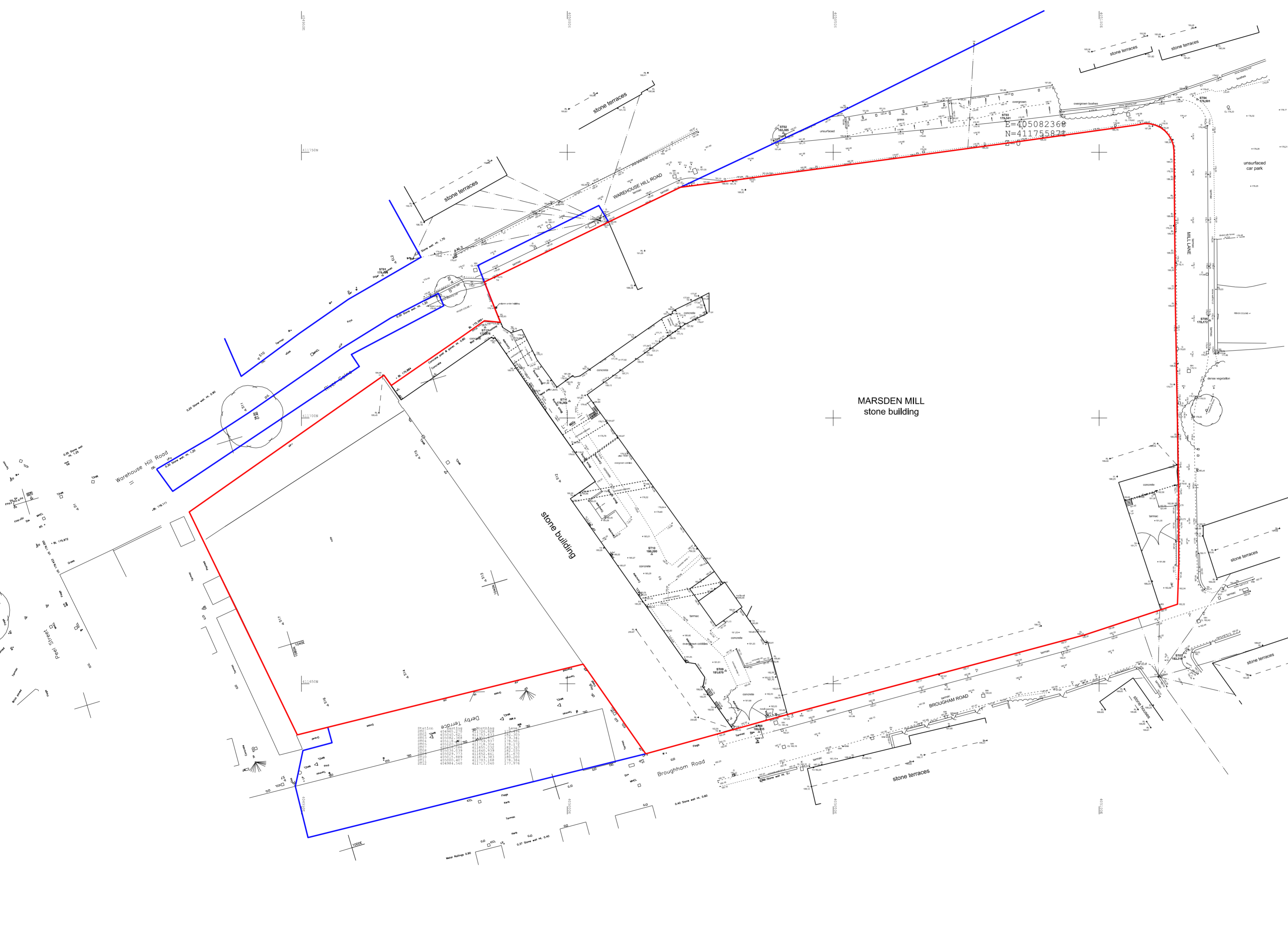
**KPP**  
 ARCHITECTS  
 Lodge House  
 12 Town Street  
 Horsforth, Leeds LS184RJ  
 T : +44 (0) 113 2390460  
 E : architects@kpp-leeds.co.uk  
 W : www.kpp-leeds.co.uk

Scale	Size	Date	Drawn	Checked
1:1250	A3	Nov'24	KW	RS
Status	<b>PLANNING</b>			
KPP Job No	<b>2197-02</b>			Rev
Number	<b>2000</b>			<b>P1</b>





Notes:  
 This drawing is the sole copyright of KPP Architects Ltd and reproduction in any form is forbidden unless permission is obtained in writing.  
 Do not scale from this drawing. Any discrepancies on site should be brought to the attention of KPP Architects Ltd.  
 Work and materials must comply with the current building regulations and codes of practice and be read in conjunction with building specifications and other sub-contractors information. All materials are to be installed in strict accordance with the recommendations of the manufacturers.



MARSDEN MILL  
stone building

stone building

P1	FOR DISCUSSION	SF	-	07.02.25
Rev	Description	By	Chkd	Date

Client  
**JOHN EDWARD CROWTHER Ltd.**

Project Title  
**PROPOSED REGENERATION  
 NEW MILLS, MARSDEN**

Drawing Title  
**EXISTING SITE PLAN**

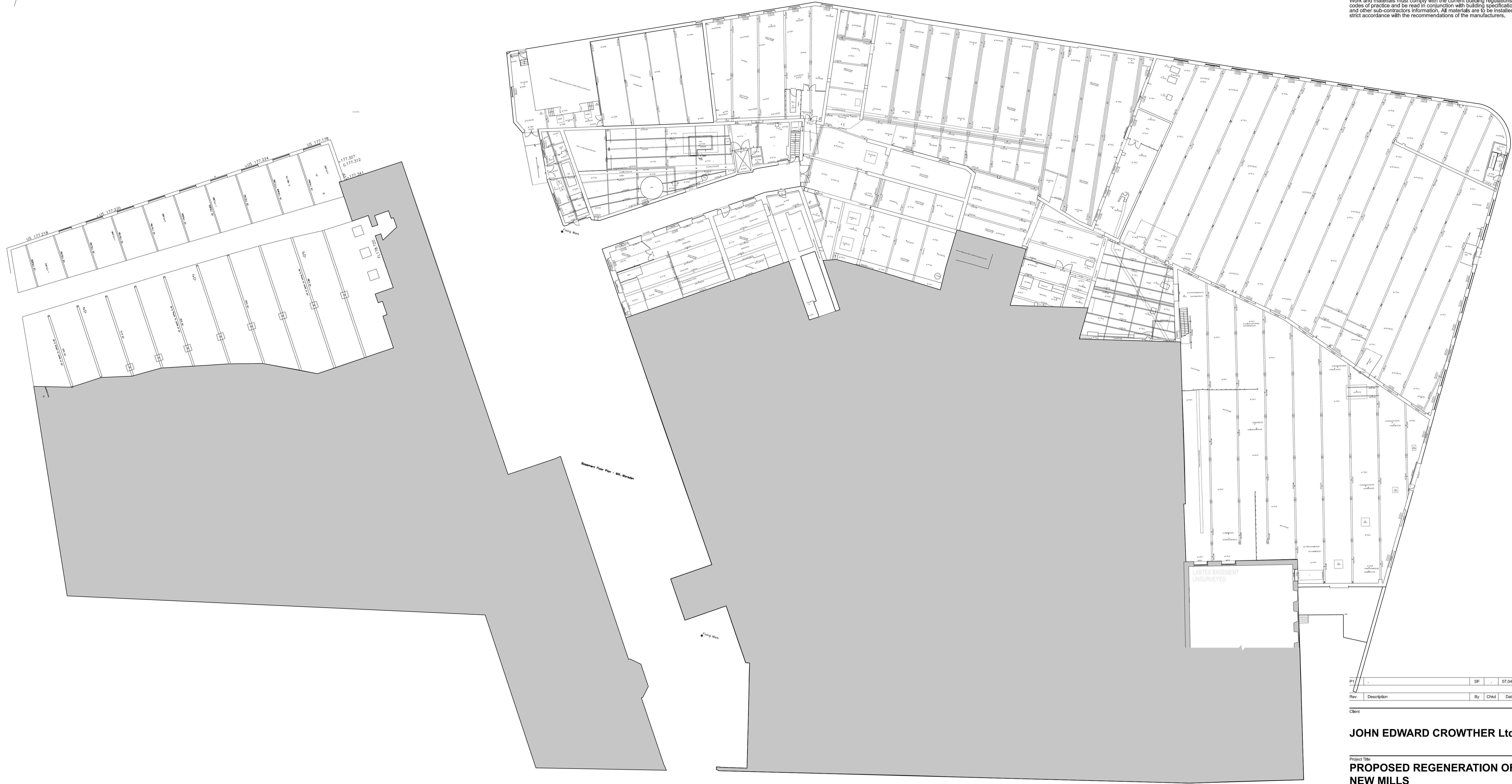
**KPP** ARCHITECTS  
 Lodge House  
 12 Town Street  
 Horsforth, Leeds LS184RJ  
 T : +44 (0) 113 2390460  
 E : architects@kpp-leeds.co.uk  
 W : www.kpp-leeds.co.uk

Scale	Size	Date	Drawn	Checked
1:500	A2	Nov'24	MH	RS
Status	<b>PLANNING</b>			
KPP Job No	<b>2197-02</b>			Rev
Number	<b>2000</b>			<b>P1</b>





Notes:  
 This drawing is the sole copyright of KPP Architects Ltd and reproduction in any form is forbidden unless permission is obtained in writing.  
 Do not scale from this drawing. Any discrepancies on site should be brought to the attention of KPP Architects Ltd.  
 Work and materials must comply with the current building regulations and codes of practice and be read in conjunction with building specifications and other sub-contractors information. All materials are to be installed in strict accordance with the recommendations of the manufacturers.



Rev	Description	By	Chkd	Date
P1				07.04.25

Client  
**JOHN EDWARD CROWTHER Ltd.**

Project Title  
**PROPOSED REGENERATION OF NEW MILLS MARSDEN**

Drawing Title  
**EXISTING BASEMENT FLOOR PLAN**

**KPP ARCHITECTS**  
 Lodge House  
 12 Town Street  
 Horsforth, Leeds LS184RJ  
 T : +44 (0) 113 2390460  
 E : architects@kpp-leeds.co.uk  
 W : www.kpp-leeds.co.uk

Scale	Size	Date	Drawn	Checked
1:250	A1	Nov' 24	KW	RS

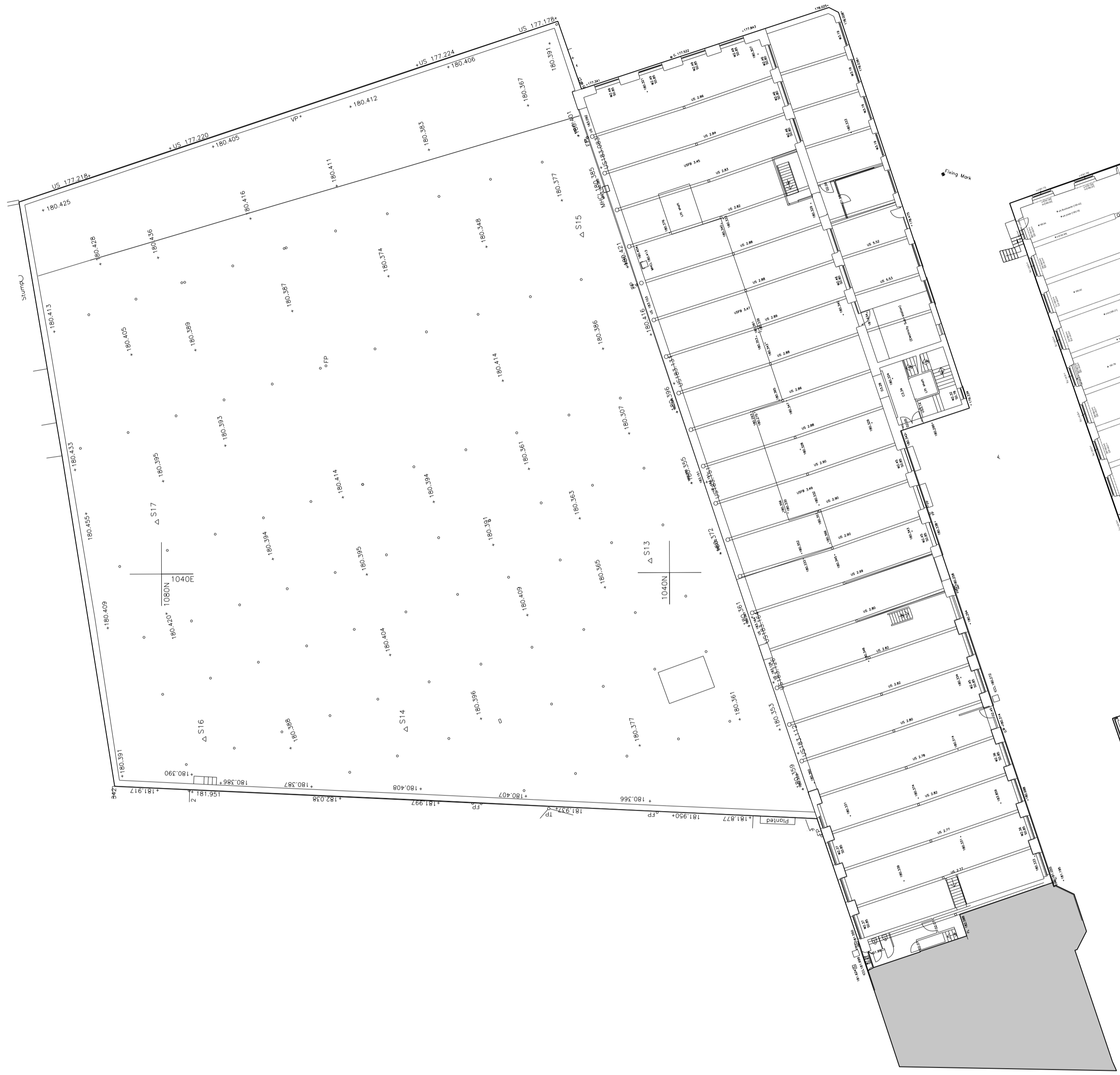
Status  
**PLANNING**

KPP Job No <b>2197-02</b>	Rev <b>P1</b>
------------------------------	------------------

Number  
**2002**



**NOTES:**  
 This drawing is the sole copyright of KPP Architects Ltd and reproduction in any form is forbidden unless permission is obtained in writing.  
 Do not scale from this drawing. Any discrepancies on site should be brought to the attention of KPP Architects Ltd.  
 Work and materials must comply with the current building regulations and codes of practice and be read in conjunction with building specifications and other sub-contractors information. All materials are to be installed in strict accordance with the recommendations of the manufacturers.



P1	FOR DISCUSSION	SF	07.04.25
Rev	Description	By	Chkd
Client			

**JOHN EDWARD CROWTHER Ltd.**

Project Title  
**PROPOSED REGENERATION OF  
 NEW MILLS  
 MARDEN**

Drawing Title  
**EXISTING LOWER GROUND  
 FLOOR PLAN**

**KPP** ARCHITECTS  
 Lodge House  
 12 Town Street  
 Horsforth, Leeds LS184RJ  
 T : +44 (0) 113 2390460  
 E : architects@kpp-leeds.co.uk  
 W : www.kpp-leeds.co.uk

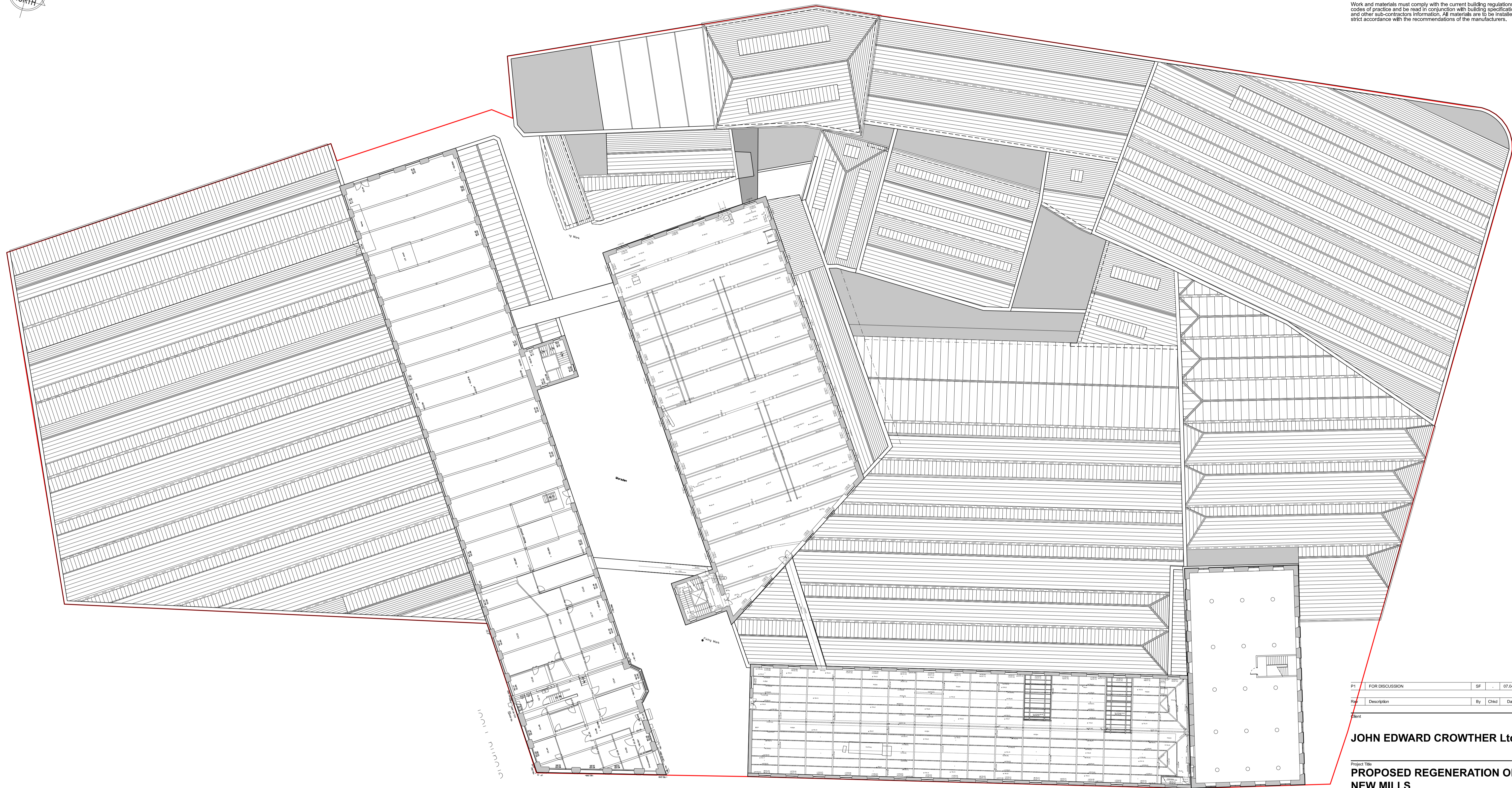
Scale	Size	Date	Drawn	Checked
1:250	A1	Nov' 24	KW	RS

Status  
**PLANNING**

KPP Job No <b>2197-02</b>	Rev <b>P1</b>
Number <b>2003</b>	



Notes:  
 This drawing is the sole copyright of KPP Architects Ltd and reproduction in any form is forbidden unless permission is obtained in writing.  
 Do not scale from this drawing. Any discrepancies on site should be brought to the attention of KPP Architects Ltd.  
 Work and materials must comply with the current building regulations and codes of practice and be read in conjunction with building specifications and other sub-contractors information. All materials are to be installed in strict accordance with the recommendations of the manufacturers.



P1	FOR DISCUSSION	SF	07.04.25
Rev	Description	By	Chkd
Date			

**JOHN EDWARD CROWTHER Ltd.**

Project Title:  
**PROPOSED REGENERATION OF  
 NEW MILLS  
 MARSDEN**

Drawing Title:  
**EXISTING UPPER GROUND  
 FLOOR PLAN**

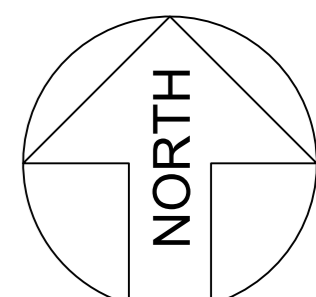
**KPP**  
 ARCHITECTS  
 Lodge House  
 12 Town Street  
 Horsforth, Leeds LS184RJ  
 T : +44 (0) 113 2390460  
 E : architects@kpp-leeds.co.uk  
 W : www.kpp-leeds.co.uk

Scale	Size	Date	Drawn	Checked
1:250	A1	Nov' 24	KW	RS

Status:  
**PLANNING**

KPP Job No	Rev
<b>2197-02</b>	<b>P1</b>
Number	
<b>2004</b>	





**Topographic Legend**

Bottom of Bank	OH Electric
Top of Banking	Railway Line
Building	Road Centre
Building Canopy	Road Markings
Concrete Base	SC Hard/Hard
Contour Major	SC Hard/Soft
Contour Minor	SC Soft/Soft
Fences	Steps
General	Tree Canopy
Kerb Bottom	Vegetation
Kerb Drop	Visible Trench
Kerb Top	Walls
OH Comms	Water Edge

**Topographic Abbreviations**

AV	Air Valve	PB	Pedestrian Beacon
BH	Borehole	PBX	Post Box
BO(L)	Bollard (Illuminated)	PGR	Pedestrian Guard Rail
BS	Bus Stop	PM	Parking Meter
Cab	Cabinet	PO	Post
CL	Cover Level	RE	Roading Eye
COL	Column	RS(L)	Road Sign (Illuminated)
Conc	Concrete	RWP	Rain Water Pipe
DC	Drainage Channel	SPL	Sign Post (Illuminated)
DFBin	Dog Fouling Bin	SRCam	Speed Camera
DP	Down Pipe	ST	Stop Tap
EP	Electricity Pole	SV	Sluice Valve
ER	Earth Rod	SVP	Soil Vent Pipe
FFL	Finished Floor Level	Tbox	Telephone Box
FH	Fire Hydrant	TL	Traffic Light
FP	Flag Pole	TOP	Top of Fence Level
GP	Gate Post	TOFL	Top of Wall Level
GV	Gas Valve	TP	Telecoms Pole
GY	Gully	VP	Vent Pipe
IC	Inspection Cover	WB	Waste Bin
KO	Kerb Outlet	WB	Window Bottom Level
LP	Lamp Post	WM	Water Meter
MH	Manhole	WO	Wash Out
Mkr	Marker	WTT	Window Top Level
MP	Marker Post	WV	Water Valve
MW	Monitoring Well		

**Measured Building Legend**

External Building Line	Internal Building Line
Building Overheads	Stairs/Steps
Doors	Windows
Sanitaryware	Kitchen Furniture
Direction of Stairs (Arrow points up)	Direction of Sloped Ceiling (Arrow points down)
Window Sill and Head Height	Double door CH=0.00
Window	Single door FCH=0.00
	Window FFL=0.00
	Ceiling Height
	False Ceiling Height
	Finished Floor Level

**Utility Legend**

Air Line	Survey Extents	SWD Sewer
Alarm Cable	Heating Pipe	HV Electric Cable
BT Cable	Kingston Comms	Oil Pipe
CATV Cable	Rising Main	Traffic Control
Chamber Extent	Unknown Detection	VP
Comms Cable	Vent Pipe	GPR Detection
CWD Sewer	Assumed Route	Records Route
Earth Wire/Tape	Cable Riser	Drainage Backdrop
Electric Cable		
Fibre Optic Cable		
Fuel Line		
FWD Sewer		
Gas Pipe		
Band of Cables		
Empty Service Duct		

**Utility Abbreviations**

CP	Cathodic Protection	LoS	Loss of Signal
CU	Disconnected Utility	MDPE	Middle Density PE
DI	Ductile Iron	SI	Span Iron
DoB	Depth of Bottom	TLC	Traffic Light Control
DoC	Depth of Cover	UD	Unreliable Depth into
ED	End of Trace	UPVC	Unplasticised
EP	Empty Duct	UPVC	Unplasticised
EtT	End of Trace	UPVC	Unplasticised
PE	Polyethylene	ULTR	Unable to Raise
HDPE	High Density PE	VC	Vertified Clay

**Manufacturer Stated Depths**

- Detected Using Electromagnetic Location Methods  
e.g. Any metallic pipe/cable. Accuracy ± 2.5% of depth reading.
- Detected Using Electromagnetic Location Methods  
e.g. Using a Sonde to locate drainage pipework.  
Accuracy ± 2.5% of depth reading.
- Detected Using Ground Penetrating Radar  
e.g. A plastic pipe or service not located by other means.  
Accuracy depends on ground conditions.

**CAUTION - LIVE SERVICES PRESENT - EXTREME CARE SHOULD BE TAKEN WHEN EXCAVATING**

ZS Surveys Ltd, and their agents or partners, are not responsible for any situation, incident or loss resulting from actions or planning resulting from total reliance upon this drawing or accompanying information. The completeness of the underground network information cannot be wholly guaranteed and as such no guarantees or warranties are provided or implied. The location and/or identification of a service will not positively indicate whether it is live or dead. A service indicated from records that has not been located or identified on site does not necessarily imply that it does not exist or is dead, however, its presence should be anticipated. The results of Electro Magnetic and GPR detection techniques are not infallible and ground profiling for the actual position and depth of services should be established.

If this drawing and any associated drawings should be used in relation to works, we advise that the users of this information follow the principles detailed by the Health and Safety Executive guidance directive HSE(G) 47, 'Avoiding Danger from Underground Services'. Further details of this directive are available at [www.hse.gov.uk/ch11p/](http://www.hse.gov.uk/ch11p/).

**Notes**

THIS DRAWING SHOULD ONLY BE USED FOR ITS ORIGINAL PURPOSE. ZS SURVEYS LTD. ACCEPTS NO RESPONSIBILITY FOR THIS DRAWING IF SUPPLIED TO ANY PARTY OTHER THAN THE ORIGINAL CLIENT.

ALL LEVELS RELATED OSTN15 GRID PROJECTION.

ALL DIMENSIONS SHOULD BE VERIFIED ON SITE PRIOR TO CONSTRUCTION.

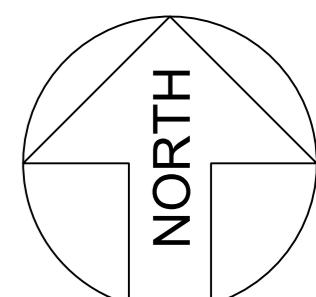
ALL HATCHING IS FOR PRESENTATIONAL PURPOSES ONLY.

Client	<b>dudleys</b> Structural & Civil Consultants		
Site Location:	NEW MILL BROUGHAM ROAD MARDEN HUDDERSFIELD HD7 6BN		
Drawing Type:	DRAINAGE SURVEY		
Surveyed:	SL	Drawn:	SL
Checked:	ZS	Authorised:	ZS
Date:	30.04.25	Scale:	1:200@A0
<b>ZS Surveys Ltd</b>			
Land, Building & Engineering Surveyors www.zssurveys.com info@zssurveys.com			
Project Number:	4311		
Sheet Number:	1 of 1		

Station	Easting	Northing	Level
SP01	404965.270	411726.628	179.494
SP02	405040.621	411753.033	180.202
SP03	405082.368	411759.027	179.501
SP04	405138.483	411759.027	179.501
SP05	405190.879	411759.027	179.501
SP06	405229.773	411652.441	181.670
SP07	405229.773	411652.441	181.670
SP08	405229.773	411652.441	181.670
SP09	405229.773	411652.441	181.670
SP10	405229.773	411652.441	181.670
SP11	405000.407	411703.168	178.364
SP12	404984.540	411717.040	177.976

MARDEN MILL  
stone building





**Topographic Legend**

Bottom of Bank	OH Electric
Top of Banking	Railway Line
Building	Road Centre
Building Canopy	Road Markings
Concrete Base	SC Hard/Hard
Contour Major	SC Hard/Soft
Contour Minor	SC Soft/Soft
Fences	Steps
General	Tree Canopy
Kerb Bottom	Vegetation
Kerb Drop	Visible Trench
Kerb Top	Walls
OH Comms	Water Edge

**Topographic Abbreviations**

AV Air Valve	PB Pedestrian Beacon
BH Borehole	PBx Post Box
BO(L) Bollard (Illuminated)	PGR Pedestrian Guard Rail
BS Bus Stop	PM Parking Meter
Cab Cabinet	PO Post
CL= Cover Level	RE Rodding Eye
COL Column	RS(L) Road Sign (Illuminated)
Conc Concrete	RWP Rain Water Pipe
DC Drainage Channel	SPL Sign Post (Illuminated)
DFBin Dog Foul Bin	SPCam Speed Camera
DP Down Pipe	ST Stop Tap
EP Electricity Pole	SV Sluice Valve
ER Earth Rod	SVP Soil Vent Pipe
FFL= Finished Floor Level	Tbox Telephone Box
FH Fire Hydrant	TL Traffic Light
FP Flag Pole	TOF= Top of Fence Level
GP Gate Post	TOF= Top of Wall Level
GV Gas Valve	TP Telecoms Pole
GY Gully	VP Vent Pipe
IC Inspection Cover	WB Waste Bin
KO Kerb Outlet	WBr Window Bottom Level
LP Lamp Post	WM Water Meter
NH Manhole	WO Wash Out
Mrk Marker	WTT Window Top Level
MP Marker Post	WV Water Valve
MW Monitoring Well	

**Measured Building Legend**

External Building Line	Window Sill and Head Height
Internal Building Line	Double door CH=0.00
Building Overheads	Single door FCH=0.00
Stairs/Steps	Window FFL=0.00
Doors	Ceiling Height
Windows	False Ceiling Height
Sanitaryware	Finished Floor Level
Kitchen Furniture	
Direction of Stairs (Arrow points up)	
Direction of Sloped Ceiling (Arrow points down)	

**Utility Legend**

Air Line	SWD Sewer
Alarm Cable	Survey Extents
BT Cable	Heating Pipe
CATV Cable	HV Electric Cable
Chamber Cabinet	Kingston Comms
Comms Cable	Oil Pipe
CWD Sewer	Rising Main
Earth Wire/Tape	Traffic Control
Electric Cable	Unseen Detection
Fibre Optic Cable	Vent Pipe
Fuel Line	GPR Detection
FWD Sewer	Assumed Route
Gas Pipe	Records Route
Band of Cables	Cable Riser
Empty Service Duct	Drainage Backdrop

**Utility Abbreviations**

CP Cathodic Protection	LoS Loss of Signal
CU Disconnected Utility	MDPE Middle Density PE
DI Ductile Iron	SI Span Iron
DoB Depth of Bottom	TLC Traffic Light Control
DoC Depth of Cover	UDI Unreliable Depth Into
ED Empty Duct	UPVC Unplasticised
End of Trace	UPVC Unplasticised
Polyethylene	PE Polyethylene
HDPE High Density PE	VC Verified Clay

**Manufacturer Stated Depths**

- Detected Using Electromagnetic Location Methods  
e.g. Any metallic pipe/cable. Accuracy ± 2.5% of depth reading.
- Detected Using Electromagnetic Location Methods  
e.g. Using a Sonde to locate drainage pipework.  
Accuracy ± 2.5% of depth reading.
- Detected Using Ground Penetrating Radar  
e.g. A plastic pipe or service not located by other means.  
Accuracy depends on ground conditions.

**CAUTION - LIVE SERVICES PRESENT - EXTREME CARE SHOULD BE TAKEN WHEN EXCAVATING**

ZS Surveys Ltd, and their agents or partners, are not responsible for any situation, incident or loss resulting from actions or planning resulting from total reliance upon this drawing or accompanying information. The completeness of the underground network information cannot be wholly guaranteed and as such no guarantees or warranties are provided or implied. The location and/or identification of a service will not positively indicate whether it is live or dead. A service indicated from records that has not been located or identified on site does not necessarily imply that it does not exist or is dead, however, its presence should be anticipated. The results of Electric Magnetic and GPR detection techniques are not infallible and ground profiling for the actual position and depth of services should be established.

If this drawing and any associated drawings should be used in relation to works, we advise that the users of this information follow the principles detailed by the Health and Safety Executive guidance directive HSG 47, 'Avoiding Danger from Underground Services'. Further details of this directive are available at [www.hse.gov.uk](http://www.hse.gov.uk).

**Notes**

THIS DRAWING SHOULD ONLY BE USED FOR ITS ORIGINAL PURPOSE. ZS SURVEYS LTD ACCEPTS NO RESPONSIBILITY FOR THIS DRAWING IF SUPPLIED TO ANY PARTY OTHER THAN THE ORIGINAL CLIENT.

ALL LEVELS RELATED OSTN15 GRID PROJECTION.

ALL DIMENSIONS SHOULD BE VERIFIED ON SITE PRIOR TO CONSTRUCTION.

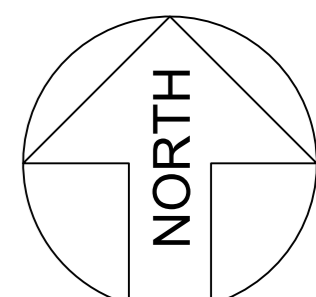
ALL HATCHING IS FOR PRESENTATIONAL PURPOSES ONLY.

Client	www.zssurveys.com
Site Location:	NEW MILLS BROUGHAM ROAD MARSDEN HUDDERSFIELD HD7 6AZ
Drawing Type:	Culvert Survey
Surveyed:	CRDR
Drawn:	SS
Checked:	CR
Authorised:	ZS
Date:	08/2024
Scale:	1:200@A0
<b>ZSSurveys Ltd</b>	
Land, Building & Engineering Surveyors www.zssurveys.com	
info@zssurveys.com	
Project Number:	3993
Sheet Number:	CUL1

Station	Easting	Northing	Level
ST01	404985.210	411755.828	179.294
ST02	405040.621	411753.633	182.309
ST03	405040.168	411756.871	179.242
ST04	405116.481	411759.937	178.501
ST05	405116.254	411758.254	178.712
ST07	405116.086	411655.032	182.310
ST08	405025.039	411640.919	182.025
ST09	405029.773	411652.441	181.670
ST10	405015.269	411674.363	180.200
ST11	405050.407	411703.168	178.364
ST12	404981.940	411717.040	177.976

# Bed Levels





Topographic Legend	
Bottom of Bank	OH Electric
Top of Banking	Railway Line
Building	Road Centre
Building Canopy	Road Markings
Concrete Base	SC Hard Hard
Contour Major	SC Hard-Soft
Contour Minor	SC Soft-Soft
Fences	Steps
General	Tree Canopy
Kerb Bottom	Vegetation
Kerb Drop	Visible Trench
Kerb Top	Walls
OH Comms	Water Edge

Topographic Abbreviations			
AV	Air Valve	PB	Pedestrian Beacon
BH	Borehole	PBx	Post Box
BO(L)	Bollard (Illuminated)	PGR	Pedestrian Guard Rail
BS	Bus Stop	PM	Parking Meter
Cab	Cabinet	PO	Post
CL	Cover Level	RE	Rodding Eye
COL	Column	RS(L)	Road Sign (Illuminated)
Conc	Concrete	RWP	Rain Water Pipe
DC	Drainage Channel	SPL	Sign Post (Illuminated)
DFBin	Dog Foul Bin	SRCAM	Speed Camera
DP	Down Pipe	ST	Stop Tap
EP	Electric Pole	SV	Sluice Valve
ER	Earth Rod	SVP	Soil Vent Pipe
FFL	Finished Floor Level	Tbox	Telephone Box
FH	Fire Hydrant	TL	Traffic Light
FP	Flag Pole	TOP	Top of Fence Level
GP	Gate Post	TOFL	Top of Wall Level
GV	Gas Valve	TP	Telecoms Pole
GY	Gully	VP	Vent Pipe
IC	Inspection Cover	WB	Waste Bin
KO	Kerb Outlet	WBx	Window Bottom Level
LP	Lamp Post	WM	Water Meter
NH	Manhole	WO	Wash Out
Mr	Marker	WTH	Window Top Level
MP	Marker Post	WV	Water Valve
MW	Monitoring Well		

Measured Building Legend	
External Building Line	Building Overheads
Internal Building Line	Stairs/Steps
Stairs/Steps	Doors
Doors	Windows
Windows	Sanitaryware
Sanitaryware	Kitchen Furniture
Kitchen Furniture	Direction of Stairs (Arrow points up)
Direction of Stairs (Arrow points up)	Direction of Sloped Ceiling (Arrow points down)
Direction of Sloped Ceiling (Arrow points down)	Window Sill and Head Height
Window Sill and Head Height	Double door
Double door	Single door
Single door	Window
Window	Ceiling Height
Ceiling Height	False Ceiling Height
False Ceiling Height	Finished Floor Level
Finished Floor Level	

Utility Legend	
Air Line	SWD Sewer
Alarm Cable	Survey Extents
BT Cable	Heating Pipe
CATV Cable	HV Electric Cable
Chamber Extent	Kingston Comms
Comms Cable	Oil Pipe
CWD Sewer	Rising Main
Earth Wire/Tape	Traffic Control
Electric Cable	Unknown Detection
Fibre Optic Cable	Vent Pipe
Fuel Line	GPR Detection
FWD Sewer	Assumed Route
Gas Pipe	Records Route
Band of Cables	Cable Riser
Empty Service Duct	Drainage Backdrop

Utility Abbreviations			
CP	Cathodic Protection	LoS	Loss of Signal
CU	Disconnected Utility	MDPE	Middle Density PE
DI	Ductile Iron	SI	Span Iron
DoB	Depth of Bottom	TLC	Traffic Light Control
DoC	Depth of Cover	UDI	Unreliable Depth Into
ED	Empty Duct	UPVC	Unplasticised
End of Trace		PE	Polyethylene
PE	Polyethylene	Ultr	Unreliable to Raise
HDPE	High Density PE	VC	Verified Clay

Manufacturer Stated Depths	
○	Detected Using Electromagnetic Location Methods e.g. Any metallic pipe/cable. Accuracy ± 2.5% of depth reading.
○	Detected Using Electromagnetic Location Methods e.g. Using a Scale to locate drainage pipework. Accuracy ± 2.5% of depth reading.
○	Detected Using Ground Penetrating Radar e.g. A plastic pipe or service not located by other means. Accuracy depends on ground conditions.

**CAUTION - LIVE SERVICES PRESENT - EXTREME CARE SHOULD BE TAKEN WHEN EXCAVATING**

ZS Surveys Ltd, and their agents or partners, are not responsible for any situation, incident or loss resulting from actions or planning resulting from total reliance upon this drawing or accompanying information. The completeness of the underground network information cannot be wholly guaranteed and as such no guarantees or warranties are provided or implied. The location and/or identification of a service will not positively indicate whether it is live or dead. A service indicated from records that has not been located or identified on site does not necessarily imply that it does not exist or is dead, however, its presence should be anticipated. The results of Electro Magnetic and GPR detection techniques are not infallible and ground profiling for the actual position and depth of services should be established.

If this drawing and any associated drawings should be used in relation to works, we advise the users of this information follow the principles detailed by the Health and Safety Executive guidance directive HSG 47, 'Avoiding Danger from Underground Services'. Further details of this directive are available at [www.hse.gov.uk](http://www.hse.gov.uk) <http://www.hse.gov.uk/>

**Notes**

THIS DRAWING SHOULD ONLY BE USED FOR ITS ORIGINAL PURPOSE. ZS SURVEYS LTD ACCEPTS NO RESPONSIBILITY FOR THIS DRAWING IF SUPPLIED TO ANY PARTY OTHER THAN THE ORIGINAL CLIENT.

ALL LEVELS RELATED OSTN'S GRID PROJECTION.

ALL DIMENSIONS SHOULD BE VERIFIED ON SITE PRIOR TO CONSTRUCTION.

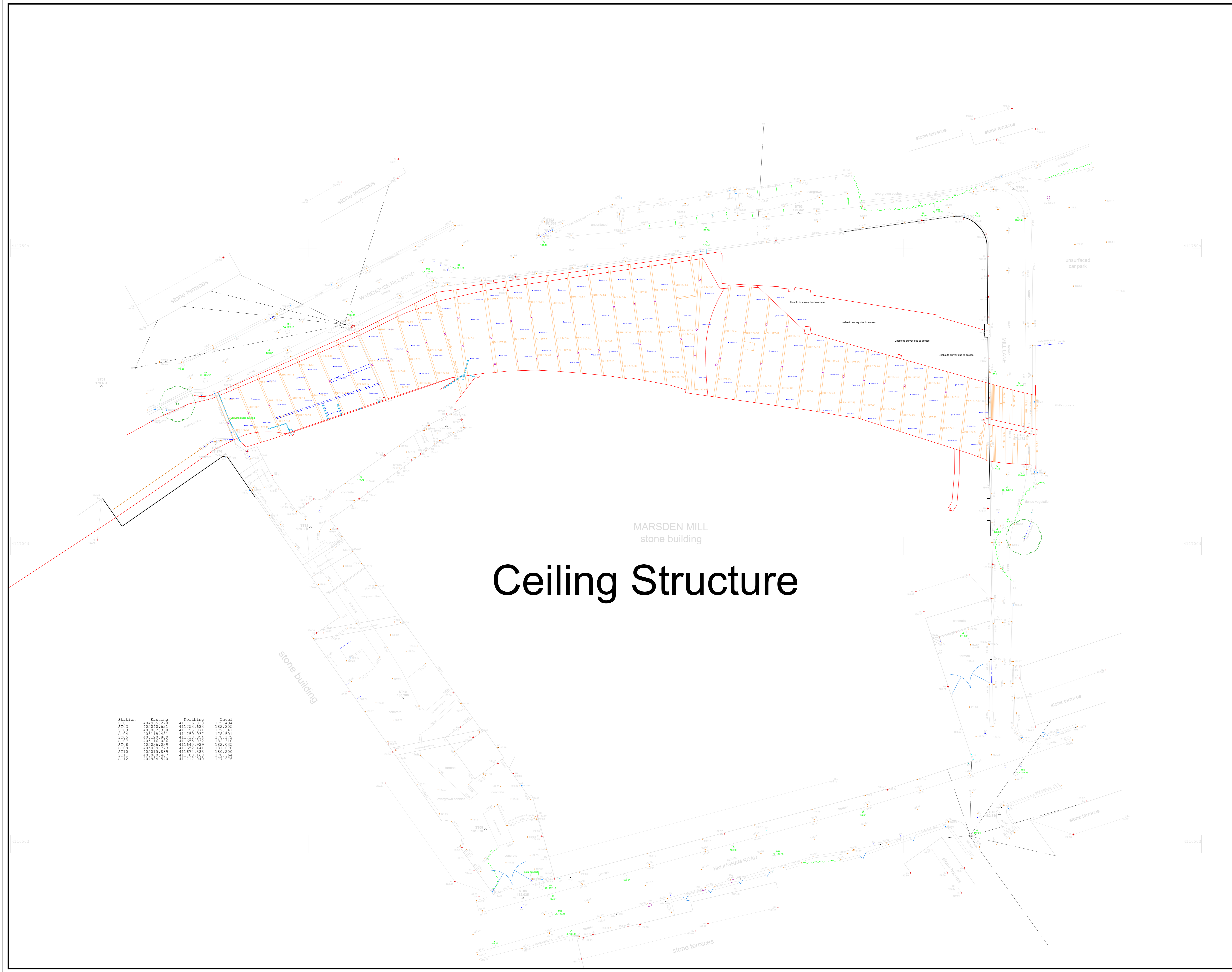
ALL HATCHING IS FOR PRESENTATIONAL PURPOSES ONLY.

Client	www.zssurveys.com		
Site Location:	NEW MILLS BROUGHAM ROAD MARSDEN HUDDERSFIELD HD7 6AZ		
Drawing Type:	Culvert Survey		
Surveyed:	CRDR	Drawn:	SS
Checked:	CR	Authorised:	ZS
Date:	08/2024	Scale:	1:200@A0
<b>ZSSurveys Ltd</b>			
Land, Building & Engineering Surveyors www.zssurveys.com			
Constructionline info@zssurveys.com			
Project Number:	3993		
Sheet Number:	CUL2		

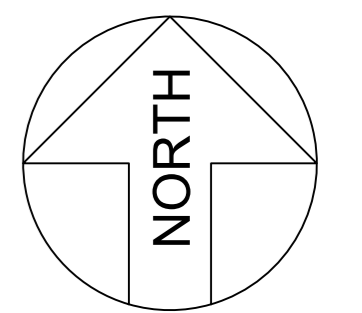
# Ceiling Structure

MARSDEN MILL  
stone building

Station	Easting	Northing	Level
ST01	404945.370	411256.698	177.494
ST02	404945.371	411256.699	182.302
ST03	404945.372	411256.700	178.162
ST04	405118.481	411259.837	179.201
ST05	405118.482	411259.838	178.162
ST06	405118.483	411259.839	182.310
ST07	405118.484	411259.840	182.310
ST08	405118.485	411259.841	182.310
ST09	405229.773	411852.441	181.670
ST10	405229.774	411852.442	180.200
ST11	405229.775	411852.443	178.364
ST12	404944.540	411717.040	177.976



# Flow Directions



**Topographic Legend**

Bottom of Bank	OH Electric
Top of Banking	Railway Line
Building	Road Centre
Building Canopy	Road Markings
Concrete Base	SC Hard/Hard
Contour Major	SC Hard/Soft
Contour Minor	SC Soft/Soft
Fences	Steps
General	Tree Canopy
Kerb Bottom	Vegetation
Kerb Drop	Visible Trench
Kerb Top	Walls
OH Comms	Water Edge

**Topographic Abbreviations**

AV Air Valve	PB Pedestrian Beacon
BH Borehole	PBx Post Box
BO(L) Bollard (Illuminated)	PGR Pedestrian Guard Rail
BS Bus Stop	PM Parking Meter
CB Cabinet	PO Post
CL= Cover Level	RE Rodding Eye
COL Column	RS(L) Road Sign (Illuminated)
Conc Concrete	RWP Rain Water Pipe
DC Drainage Channel	SPL Sign Post (Illuminated)
DFBin Dog Foul Bin	SRCam Speed Camera
DP Down Pipe	ST Stop Tap
EP Electricity Pole	SV Sluice Valve
ER Earth Rod	SVP Soil Vent Pipe
FFL= Finished Floor Level	Tbox Telephone Box
FH Fire Hydrant	TL Traffic Light
FP Flag Pole	TOF= Top of Fence Level
GP Gate Post	TOF= Top of Wall Level
GV Gas Valve	TP Telecoms Pole
GY Gully	VP Vent Pipe
IC Inspection Cover	WB Waste Bin
KO Kerb Outlet	WB= Window Bottom Level
LP Lamp Post	WM Water Meter
MH Manhole	WO Wash Out
Mr Marker	WTT= Window Top Level
MP Marker Post	WV Water Valve
MW Monitoring Well	

**Measured Building Legend**

External Building Line	Building Overheads
Internal Building Line	Stairs/Steps
Building Overheads	Doors
Stairs/Steps	Windows
Doors	Sanitaryware
Windows	Kitchen Furniture
Sanitaryware	Direction of Stairs (Arrow points up)
Kitchen Furniture	Direction of Sloped Ceiling (Arrow points down)
Direction of Stairs (Arrow points up)	Window Sill and Head Height
Direction of Sloped Ceiling (Arrow points down)	Double door CH=0.00 Ceiling Height
Window Sill and Head Height	Single door FCH=0.00 False Ceiling Height
Double door CH=0.00 Ceiling Height	Window FFL=0.00 Finished Floor Level
Single door FCH=0.00 False Ceiling Height	
Window FFL=0.00 Finished Floor Level	

**Utility Legend**

Air Line	SWD Sewer
Alarm Cable	Survey Extents
BT Cable	Heating Pipe
CATV Cable	HV Electric Cable
Chamber Cabinet	Kingston Comms
Comms Cable	Oil Pipe
CWD Sewer	Rising Main
Earth Wire/Tape	Traffic Control
Electric Cable	Unseen Detection
Fibre Optic Cable	Vent Pipe
Fuel Line	GPR Detection
FWD Sewer	Assumed Route
Gas Pipe	Records Route
Band of Cables	Cable Riser
Empty Service Duct	Drainage Backdrop

**Utility Abbreviations**

CP Cathodic Protection	LoS Loss of Signal
CU Cut	MDPE Middle Density PE
DI Ductile Iron	SI Span Iron
DoB Depth of Bottom	TLC Traffic Light Control
DoC Depth of Cover	UDI Unreliable Depth Into
ED Empty Duct	UPVC Unplasticised
End of Trace	UPVC Unplasticised
Polyethylene	PE Polyethylene
HDPE High Density PE	VC Unstable to Raise
	VC Verified Clay

**Manufacturer Stated Depths**

- Detected Using Electromagnetic Location Methods  
e.g. Any metallic pipe/cable. Accuracy ± 2.5% of depth reading.
- Detected Using Electromagnetic Location Methods  
e.g. Using a Scale to locate drainage pipework. Accuracy ± 2.5% of depth reading.
- Detected Using Ground Penetrating Radar  
e.g. A plastic pipe or service not located by other means. Accuracy depends on ground conditions.

**CAUTION - LIVE SERVICES PRESENT - EXTREME CARE SHOULD BE TAKEN WHEN EXCAVATING**

ZS Surveys Ltd, and their agents or partners, are not responsible for any situation, incident or loss resulting from actions or planning resulting from total reliance upon this drawing or accompanying information. The completeness of the underground network information cannot be wholly guaranteed and as such no guarantees or warranties are provided or implied. The location and/or identification of a service will not positively indicate whether it is live or dead. A service indicated from records that has not been located or identified on site does not necessarily imply that it does not exist or is dead, however, its presence should be anticipated. The results of Electric Magnetic and GPR detection techniques are not infallible and ground profiling for the actual position and depth of services should be established.

If this drawing and any associated drawings should be used in relation to works, we advise that the users of this information follow the principles detailed by the Health and Safety Executive guidance directive HSG 47, 'Avoiding Danger from Underground Services'. Further details of this directive are available at [www.hse.gov.uk/ch10/](http://www.hse.gov.uk/ch10/).

**Notes**

THIS DRAWING SHOULD ONLY BE USED FOR ITS ORIGINAL PURPOSE. ZS SURVEYS LTD ACCEPTS NO RESPONSIBILITY FOR THIS DRAWING IF SUPPLIED TO ANY PARTY OTHER THAN THE ORIGINAL CLIENT.

ALL LEVELS RELATED OSTN15 GRID PROJECTION.

ALL DIMENSIONS SHOULD BE VERIFIED ON SITE PRIOR TO CONSTRUCTION.

ALL HATCHING IS FOR PRESENTATIONAL PURPOSES ONLY.

Client	www.zssurveys.com		
Site Location:	NEW MILLS BROUGHAM ROAD MARSDEN HUDDERSFIELD HD7 6AZ		
Drawing Type:	Culvert Survey		
Surveyed:	CRDR	Drawn:	SS
Checked:	CR	Authorised:	ZS
Date:	08/2024	Scale:	1:200@A0
<b>ZS Surveys Ltd</b>			
Land, Building & Engineering Surveyors www.zssurveys.com			
Constructionline info@zssurveys.com			
Project Number:	3993		
Sheet Number:	CUL3		

