

P:\3427 - West House, Gomersal\03\_Spatial Coordination\03.1 - Drawings\Planning\3427 - Plots 2 & 8 - Model 03.rvt

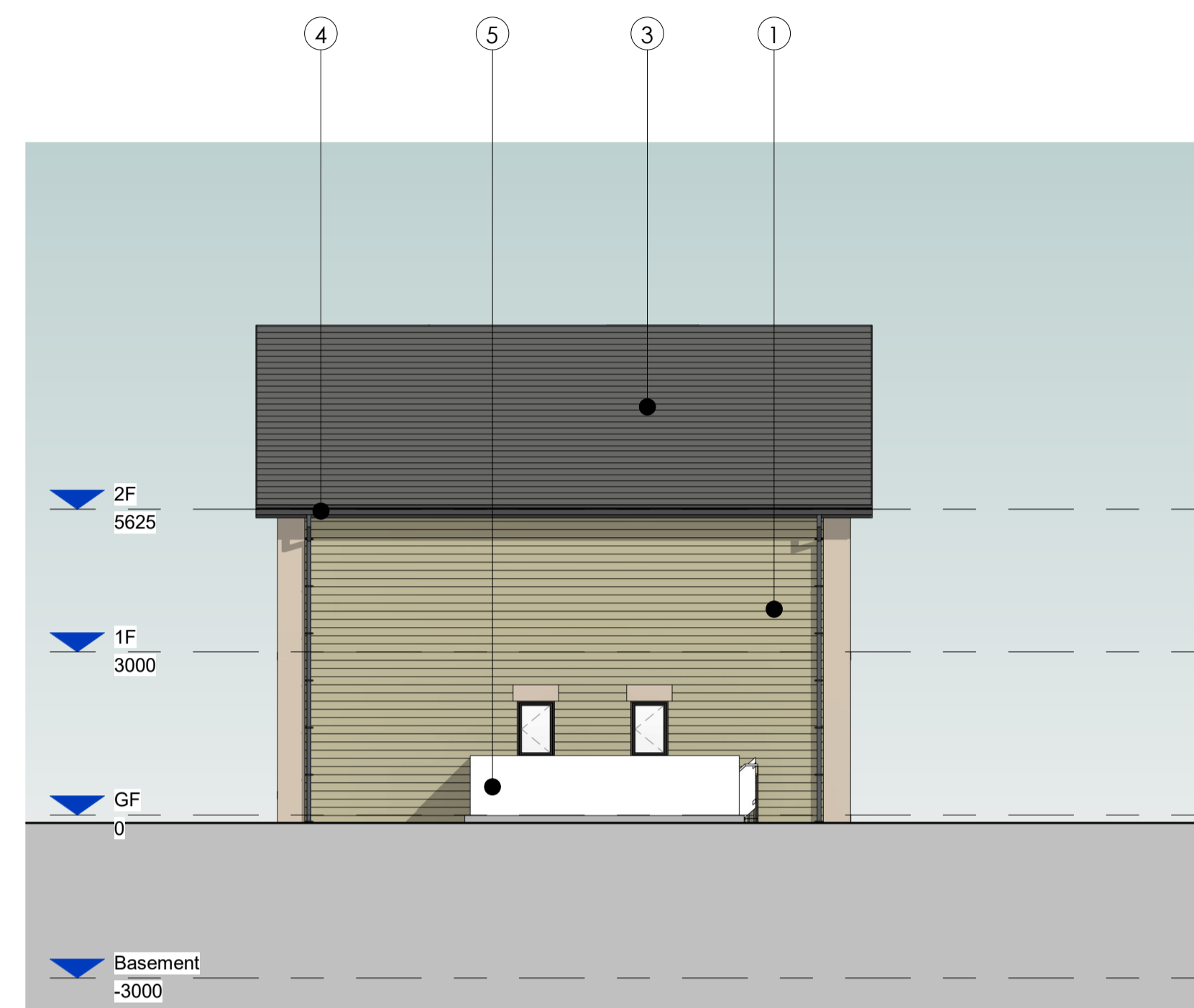
Copyright of this drawing remains the sole property of Den Architecture Ltd unless otherwise assigned in writing. Do not scale from this drawing. figured dimensions are to be worked in all cases with any discrepancies reported to Den Architecture Ltd prior to commencement of any work.

Northpoint:

Rev	Date	Amendments	By	Chkd
A	29.01.2026	Updated in line with client comments	ND	ADP
B	05.03.2026	Updated in line with client comments	ND	ADP



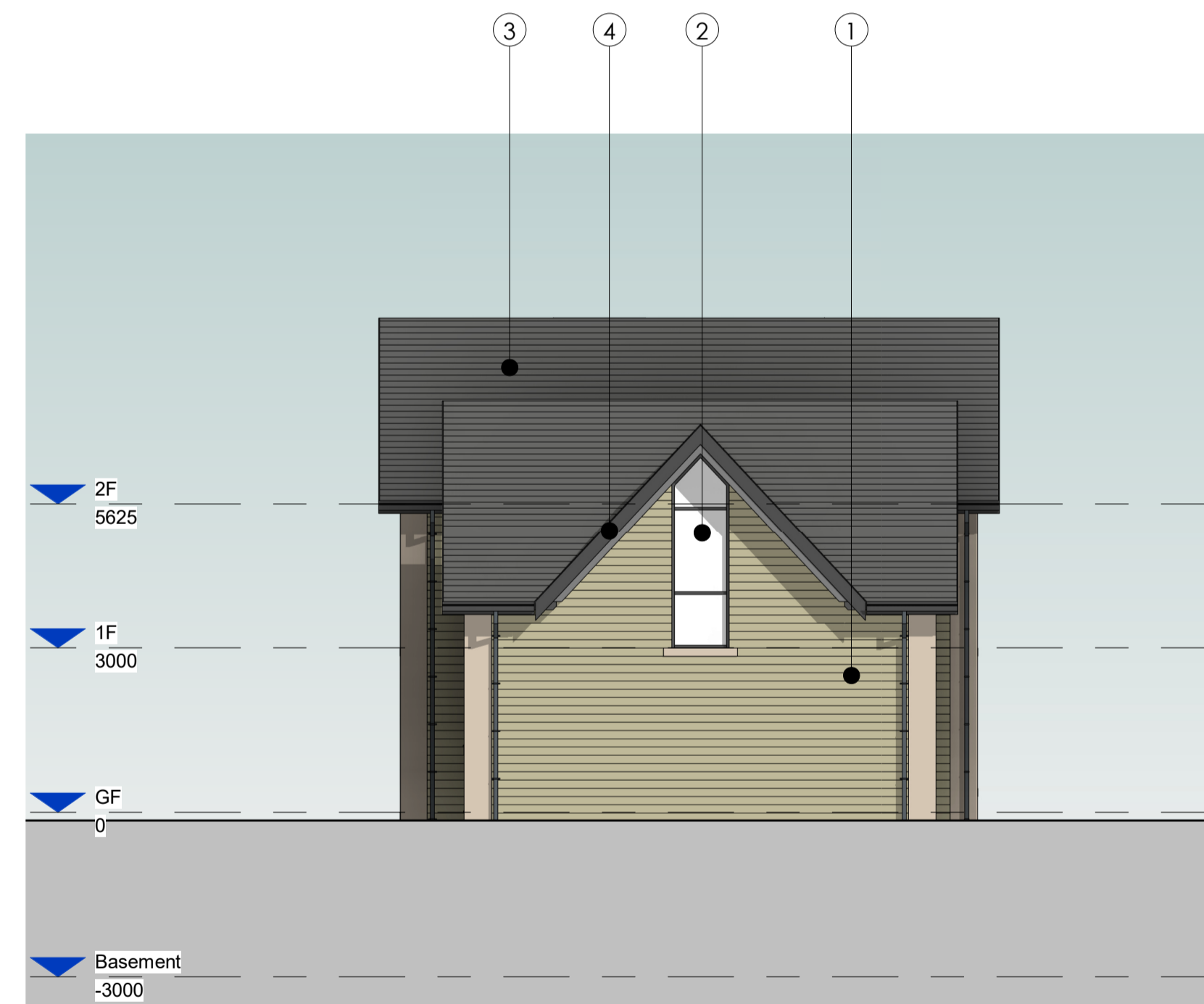
Front Elevation 1 : 100



Side Elevation 1 1 : 100



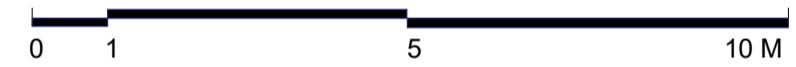
Rear Elevation 1 : 100



Side Elevation 2 1 : 100

**Materials Schedule**

- ① Stone to approved sample.
- ② Aluminium carved double glazed window & doors, colour dark grey
- ③ Tile/slate roof finish to approved sample
- ④ Powder coated aluminium fascia & soffit panels, colour dark grey
- ⑤ Glazed balustrade (Light grey)
- ⑥ Metal decorative balustrade (Dark grey)



8 Wharf Street,  
Leeds, LS2 7EQ

T: 0113 244 5038  
info@den.uk.com  
www.den.uk.com



Project: Proposed Residential Development, West House, Oxford Rd, Gomersal, Cleckheaton BD19 4AU			
Client: Empire Real Estate Development Ltd			
Dwg Title: Plots 2 & 8 - Proposed Elevations			
Date: September 2024	Scale: As indicated	Drawn: TD	Checked: ADP
Project No: 3427	Size: A1	Status: Preliminary	
Drawing Number: 3427-DEN-XX-ZZ-DR-A-4104			Revision: B