

ROAD MARKINGS KEY:

XXX/WL/ZZZ TSRGD REF NUMBER / WHITE LINE / LENGTH OR WIDTH

SIGNAGE KEY



TTS01 - TO BE MOUNTED 180m FROM SITE WORKS



RS01 - TO BE MOUNTED AT THE START OF CYCLEWAYS / WHEN CYCLIST LEAVE THE CARRIAGEWAY



RS02 - MOUNTED BACK TO BACK ON THE SAME POLE AS RS01 AT THE START OF CYCLEWAY



RS03 - TO BE MOUNTED AT BACK OF FOOTWAY IN ADJACENT TO CYCLE LANE START



RS04 - TO BE MOUNTED BETWEEN 1.5 TO 12m AWAY FROM 1003A



RS05 - TO BE MOUNTED BACK TO BACK WITH RS06 AT BACK OF FOOTWAY



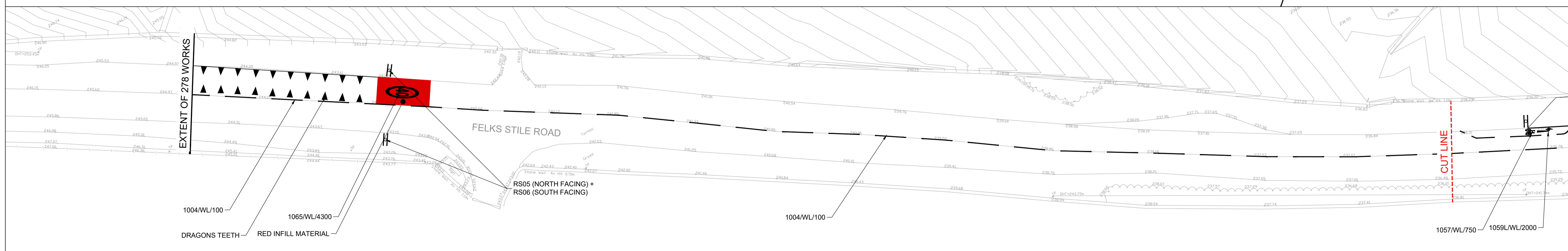
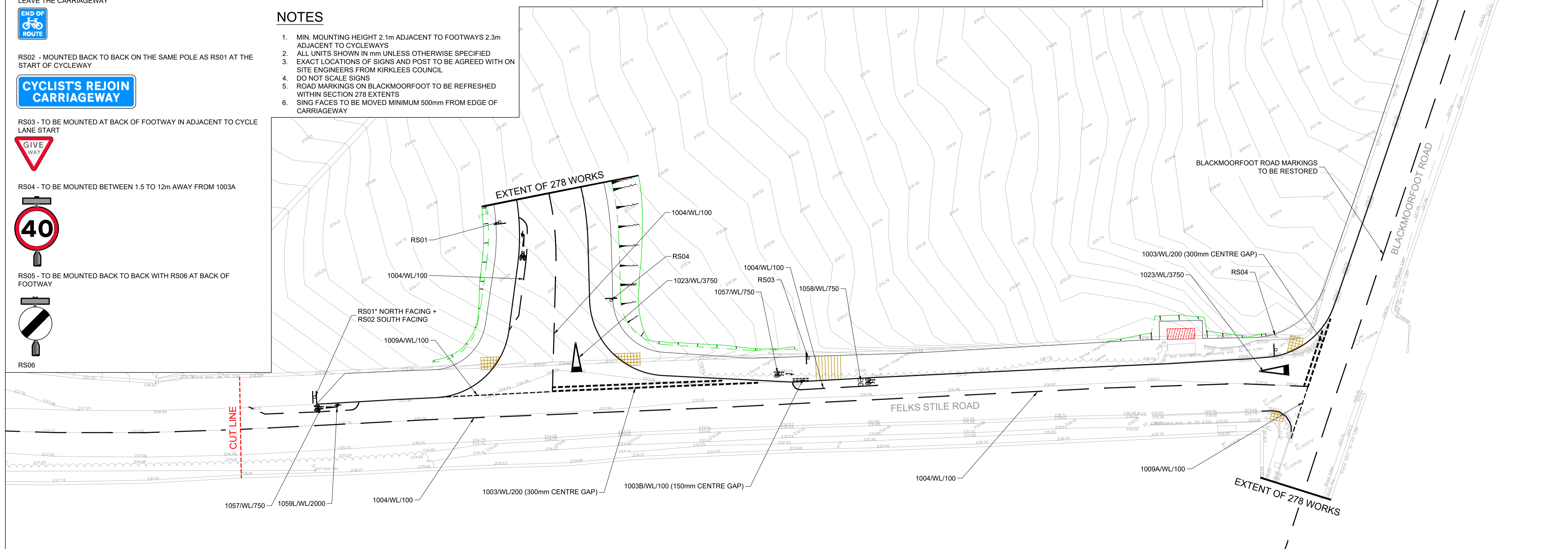
RS06

REF NO.	TYPE OF SIGN OR LEGEND	"X" HEIGHT	SIGN DETAILS			TSRGD DIAG NO.	CLASS OF REFLECTIVITY	NO. OF POSTS	DIA. OF POST (mm)	THICKNESS (X)	DEPTH IN GROUND (mm)	SUPPORT DETAILS		GROUND CLEARANCE (mm)	ILLUMINATED	FOUNDATION DETAILS		
			OVERALL SIZE (mm)	WIDTH	HEIGHT							DIA.	OVERALL LENGTH (mm)			POST CENTRES	DIA (X)	DEPTH (Y)
TTS1		125	2205	720	N/A	7014	RA2 (12899-1:2007)	2	76.1	3.2	1150	4170	1905	2300	N	300	1000	150
RS01		N/A	N/A	N/A	450	956	RA2 (12899-1:2007)	1	76.1	3.2	950	3700	N/A	2300	N	300	800	150
RS02		50	495	540	N/A	965	RA2 (12899-1:2007)	1	76.1	3.2	950	3790	N/A	2300	N	300	800	150
RS03		50	1025	390	N/A	N/A	RA2 (12899-1:2007)	1	76.1	3.2	950	3640	N/A	2300	N	300	800	150
RS04		N/A	750	850	N/A	602	RA2 (12899-1:2007)	1	76.1	3.2	950	4000	N/A	2300	N	300	800	150
RS05		N/A	N/A	N/A	750	670.4	RA2 (12899-1:2007)	1	76.1 (WB)	3.2	950	3920	N/A	2100	Y	300	800	150
RS06		N/A	N/A	N/A	600	671	RA2 (12899-1:2007)	TO BE MOUNTED ON BACK OF POST OF RS05 WITH A HEIGHT OF 2250										
RS01*		N/A	N/A	N/A	450	956	RA2 (12899-1:2007)	TO BE MOUNTED ON BACK OF POST OF RS02 WITH A HEIGHT OF 2390										

SIGN SCHEDULE

NOTES

- MIN. MOUNTING HEIGHT 2.1m ADJACENT TO FOOTWAYS 2.3m ADJACENT TO CYCLEWAYS
- ALL UNITS SHOWN IN mm UNLESS OTHERWISE SPECIFIED
- EXACT LOCATIONS OF SIGNS AND POST TO BE AGREED WITH ON SITE ENGINEERS FROM KIRKLEES COUNCIL
- DO NOT SCALE SIGNS
- ROAD MARKINGS ON BLACKMOORFOOT TO BE REFRESHED WITHIN SECTION 278 EXTENTS
- SING FACES TO BE MOVED MINIMUM 500mm FROM EDGE OF CARRIAGEWAY



Sanderson Associates Consulting Engineers ("the consultant"), has not checked or verified, and shall have no liability whatsoever for any inaccuracies which may be attributable to any data, reports, base plan(s) and drawings provided by the client, or purchased by the consultant on the client's behalf, that may have been utilised within this drawing.

The consultant shall not be liable for the use by any person of any document for any purpose other than that for which the same were provided by the consultant.

No liability whatsoever is accepted by the consultant for any error or omissions.

The consultant accepts no liability for any vehicle track software used and / or its vehicle libraries.

The locations of utilities apparatus, if shown, is reproduced from plans supplied to the consultant, although care has been taken when duplicating this information. These locations are approximate only and no guarantee can be given for their accuracy. It is the client's or its appointed agent/contractors responsibility to verify the exact locations on site by hand dug trial holes or other appropriate means prior to mechanical excavation.

Service conditions are not shown but their presence should be anticipated.

Reference to any third party equipment shown on this drawing was only relevant at the time the drawing was prepared.

It is the client's responsibility to ensure that any equipment ordered meets the design.



UNTIL TECHNICAL APPROVAL HAS BEEN OBTAINED FROM THE RELEVANT LOCAL AUTHORITIES OR STATUTORY BODIES, IT SHOULD BE UNDERSTOOD THAT ALL DRAWINGS ARE ISSUED AS PRELIMINARY AND NOT FOR CONSTRUCTION. SHOULD THE CONTRACTOR AND / OR EMPLOYER COMMENCE WORK PRIOR TO APPROVAL BEING GIVEN, IT IS ENTIRELY AT THEIR OWN RISK

P01	FIRST ISSUE	SS	02/10/2025	TC
Rev	Amendment	Drawn	Date	Checked
Drawing Status		S3 - FOR COMMENT		

Client MILLER HOMES	Project Title	SECTION 278 WORKS BLACKMOORFOOT		Scale	1:250	Drawing Size	A1	Drawn By	SS	Checked By	TC
	Drawing Title	PROPOSED SIGNING AND LAYOUT		Project Number	169635	Date	OCT 25	Approved By	DB		
		Drawing Number	169635-SAN-BMF-XX-DR-C-12_001		Rev	P01					