

RWP AND SVF/FOUL CONNECTIONS  
ARE SUBJECT TO FINAL  
CONFIRMATION BY ARCHITECT

This drawing is copyright of DART Engineers Ltd and must not be copied or reproduced in any way without written consent.

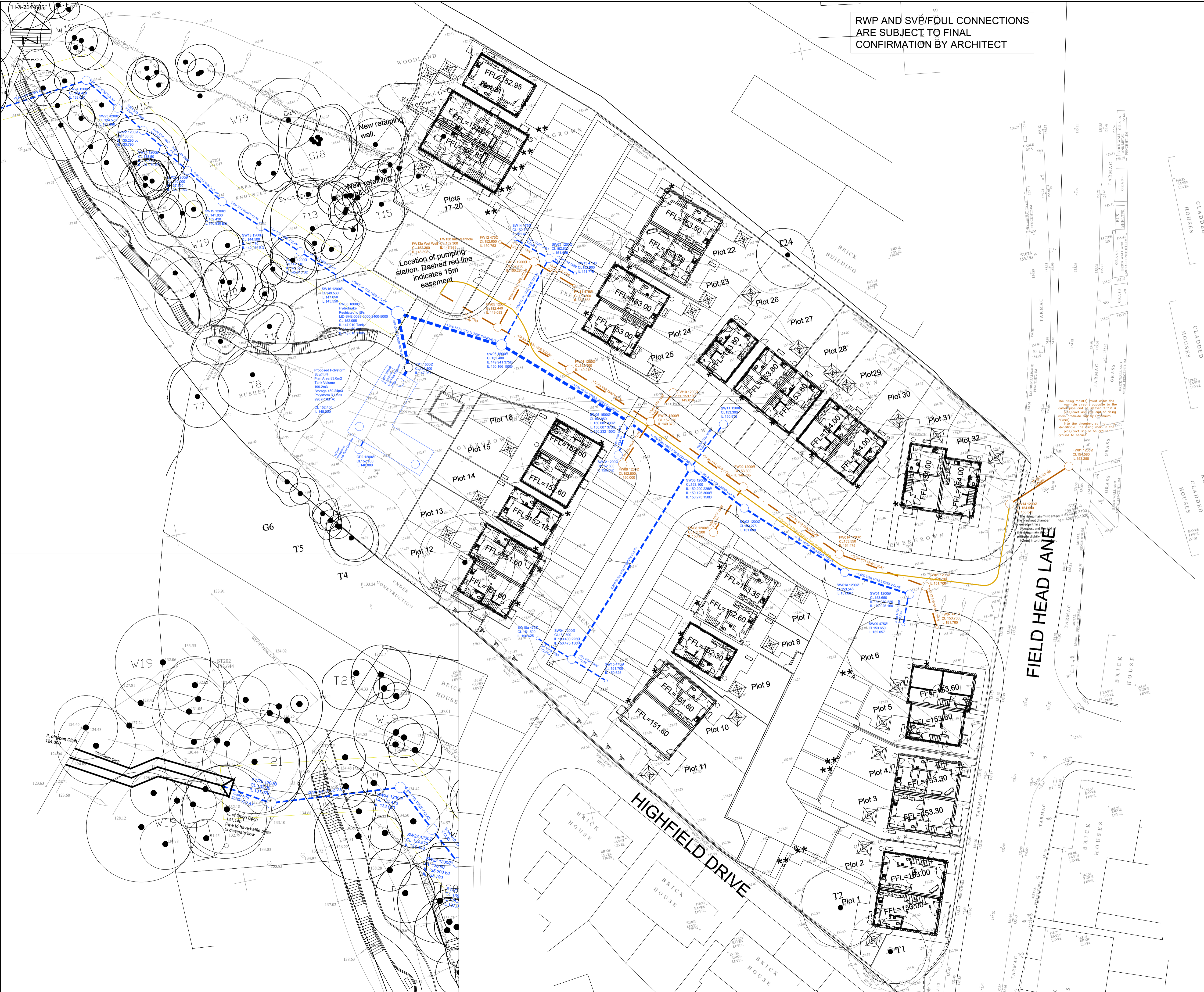
DO NOT SCALE OFF THIS DRAWING

Status **PRELIMINARY**

No.	Revision	Date	Drawn

- Key:**
- Site Boundary
  - Adoptable SW Sewer and Manhole
  - Adoptable FW Sewer and Manhole
  - Adoptable FW Rising Main
  - Existing Foul Sewer
  - Existing Watercourse

1. All adoptable sewer works and material to be in accordance with "Code for Adoption". The Relevant British/European and Yorkshire Water's Standards/Requirements/Addendum to the Mechanical and Electrical Specification and Kitemarked.
2. Manhole covers shall have a clear opening of 600mm and shall be Class D400 to BS EN 124 with 150mm deep frames in highways.
3. Filled ground must be filled and consolidated under the supervision and to the satisfaction of Yorkshire Water before any sewer works are carried out.
4. Yorkshire Water is not obliged to accept filter drain/land drainage run-off into the public sewer network or adoptable drainage system (directly or indirectly). An alternative method of disposal of the land drainage run-off will therefore be required and you will have to liaise with the Local Authority, Land Drainage Section regarding the disposal of the filter drain/land drainage run-off.
5. The adoptable sewers should be a minimum of 1m and manholes 0.5m from kerb faces and service margins.
6. Sewers must have 5 metres clearance from trees and hedges or the width of the canopy at mature height.
7. Sewers to be laid in Class "S" Bedding (150mm granular bed and surround). Where depth of cover to top of the sewer is less than 1.2m in highways and verges (or less than 900mm in nonvehicular access areas) then a concrete slab should be provided above granular bed and surround.
8. Bedding and backfill material to conform to the requirement of Water Industry Specification 4-08-02 (Table A2).
9. Yorkshire Water policy is that type "C" brick manholes and 1050mm diameter manhole rings are not preferred.
10. Adoptable plastic sewer pipes to be BSI kitemarked (certified to WIS 4-35-01 and BS/EN13476). Adoptable plastic sewer pipes to be laid in maximum 3 metre lengths unless there is a specific operational need to lay longer lengths. Plastic channel sections in manholes are not acceptable and Yorkshire Water would require clay ware channel in manholes.
11. The minimum crushing strength for clay pipes should be as follows: 100mm dia. 40kN/m, 150mm dia. 40kN/m, 225mm dia. 65kN/m and 300mm dia. 72kN/m. The minimum crushing strength for concrete pipes should be - (Class 120 to EN 1916/BS5911-1:2002). Plastic pipes should conform to WIS 4-35-01 and BS EN13476.
12. Where a B125 cover and frame has been approved, this must not be coated in plastic and must have lifting eyes suitably sized to accommodate standard lifting keys. Screw down covers are not acceptable.
13. There must be enough clearance at crossovers to accommodate bedding to both pipes, approx. 300mm; if crossover is near the rocker then the clearance needed may need to be increased.
14. Cover slabs must carry the BSI kitemark and British Standard number or will be rejected by Yorkshire Water. Where the clear opening of the kitemarked product is different to that of the cover and frame, a loading bearing slab should be fitted above the cover slab to bring the size down to 600x600mm for the Yorkshire Water specified cover size. Please refer to concrete pipe systems association (cpsa), technical bulletin issued autumn 2004 for kitemarked cover slab opening sizes.
15. All highway works and material to conform with Kirklees MDC specification.
16. Gully cover and frames shall be D400 ductile iron and comply with European standard BS EN 124. Those sighted in accessways and mews courts must be suitable for use in pedestrian areas.
17. Precast concrete manhole units shall comply with the relevant provisions of BS EN 1917 and BS 5911-3.
18. Precast concrete manhole components shall comply with the relevant provisions of BS EN 1917 and BS 5911-3.
19. Corbel slabs shall comply with the requirements of BS 5911-3:2010+A1:2014 Table 5 and Figure 8.
20. Cover slabs should be installed with a minimum 300mm cover to finished levels to comply with National Specifications.
21. All FCC units in oversized manholes must have a design working life of 100 years (min) in accordance with BS 8500-1:2015+A2:2019 - Table A.5 (this is intended to ensure that all circular oversized manholes with ID > 0.9m, classed as "structures" installed in the highway, will comply with the same mandatory durability requirement as other highway structures).



**CONTACT**  
e: andy@dart-engineers.com  
e: rob@dart-engineers.com  
m: 07725281902  
w: www.dart-engineers.com

**CLIENT**  
STONEWATER

**PROJECT**  
FIELDHEAD LANE  
BIRSTALL

**DRAWING TITLE**  
DRAINAGE LAYOUT

Drawn	RT	Chkd	AD	Date	24.04.23	Scale	1/250
Sheet Size	Drawing No.		Revision		P4		
A1	25469-DR-C-0100						