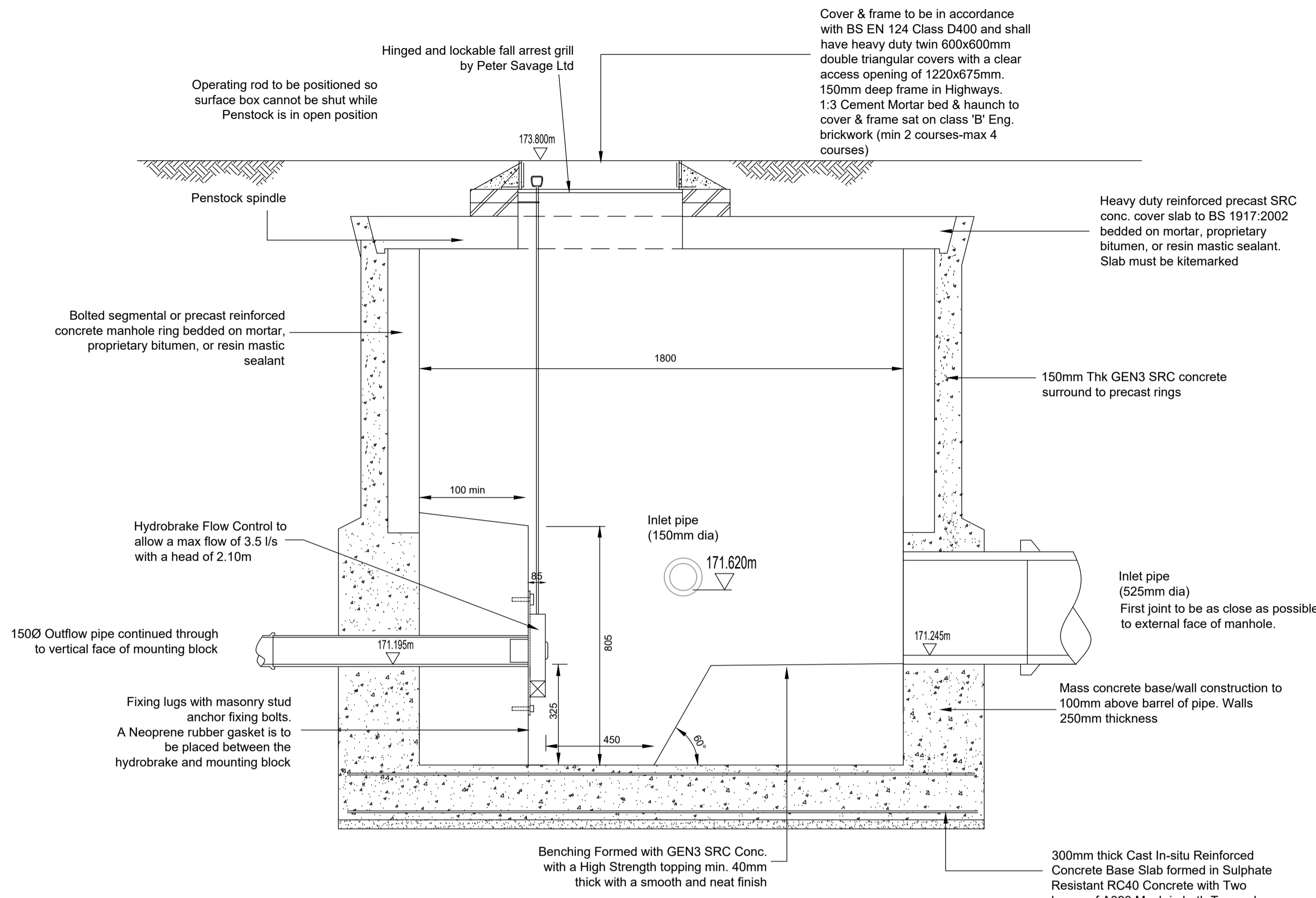
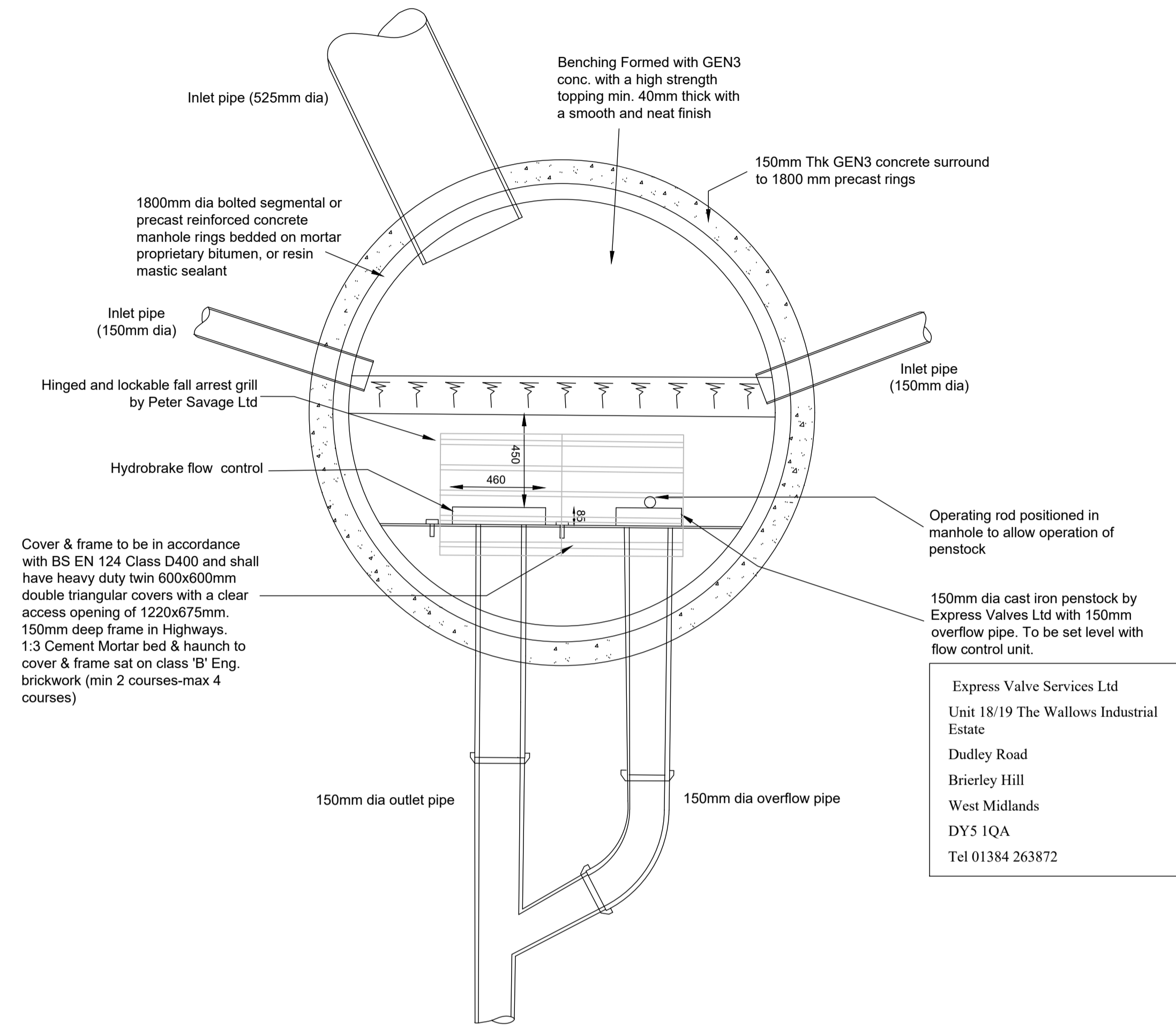


All Custom Built Ironwork to be Hot-Dipped Galvanized Prior to Final Fining.

All adoptable sewer works and material to be in accordance with "CODE for Adoption", The Relevant British/European and Yorkshire Water Standards/Requirements and Kitemarked.

CODE For Adoption Under a Section 104 Agreement

- All adoptable sewer works and material to be in accordance with "Code for Adoption", The Relevant British/European and Yorkshire Water Standards/Requirements/Addendum to the Mechanical and Electrical Specification and Kitemarked.
- Manhole covers must have a clear opening of 600mm and shall be Class D400 to BS EN 124 with 150mm deep frames in highways.
- Filled ground must be filled and consolidated under the supervision and to the satisfaction of Yorkshire Water before any sewer works are carried out.
- Yorkshire Water are not obliged to accept filter drain/land drainage runoff into the public sewer network or adoptable drainage system (directly or indirectly). An alternative method of disposal of land drainage runoff will therefore be required. Please consult with the Local Authority/Land drainage Section.
- The adoptable sewers should be a minimum of 1m and manholes 0.5m from kerb faces and service margins.
- Sewers must have 5 metres clearance from trees and hedges or the width of canopy at mature height.
- Sewers to be laid in Class "S" bedding (150mm granular bed & surround.) Where depth of cover to the top of the sewer is less than 1.2m in Highway and verges (or less than 900mm in non vehicular areas) then a concrete slab should be provided above the granular bed and surround.
- Bedding and backfill material to conform to the requirements of Water Industry Specification 4-08-02 (Table A2).
- Yorkshire Water policy is that Type "C" brick manholes and 1050mm dia manhole rings are not preferred. Instead it is preferred that you use a Type "B" manhole with 1200mm dia or 1500mm dia rings with the opening sited over the channel where depth of cover to pipe soffit is 1.0-1.5m.
- Adoptable plastic sewer pipes to be BSI Kitemarked (certified to WIS 4-35-01 and BS EN 13476). Adoptable plastic sewer pipes to be laid in maximum 3 metre lengths unless there is a specific operational need to lay longer lengths. Plastic channel sections in manholes are not acceptable. Yorkshire Water require clay channels in manholes.
- The minimum crushing strength for clay pipes should be as follows: 100mm dia. 40kN/m, 150mm dia. 40kN/m, 225mm dia. 45kN/m, 300mm dia. 72kN/m. The minimum crushing strength for concrete pipes should be - (Class 120 to EN 1916/BS 5911-1:2002). Plastic pipes should conform to WIS 4-35-01 and BS EN 13476.
- Where a B125 cover and frame has been approved, this must not be coated in plastic and must have lifting eyes suitably sized to accommodate standard lifting keys. Screw down covers are not acceptable.
- There must be enough clearance at crossovers to accommodate bedding to both pipes (approx 300mm). If crossover is near the rocker then the clearance needed may need to be increased.

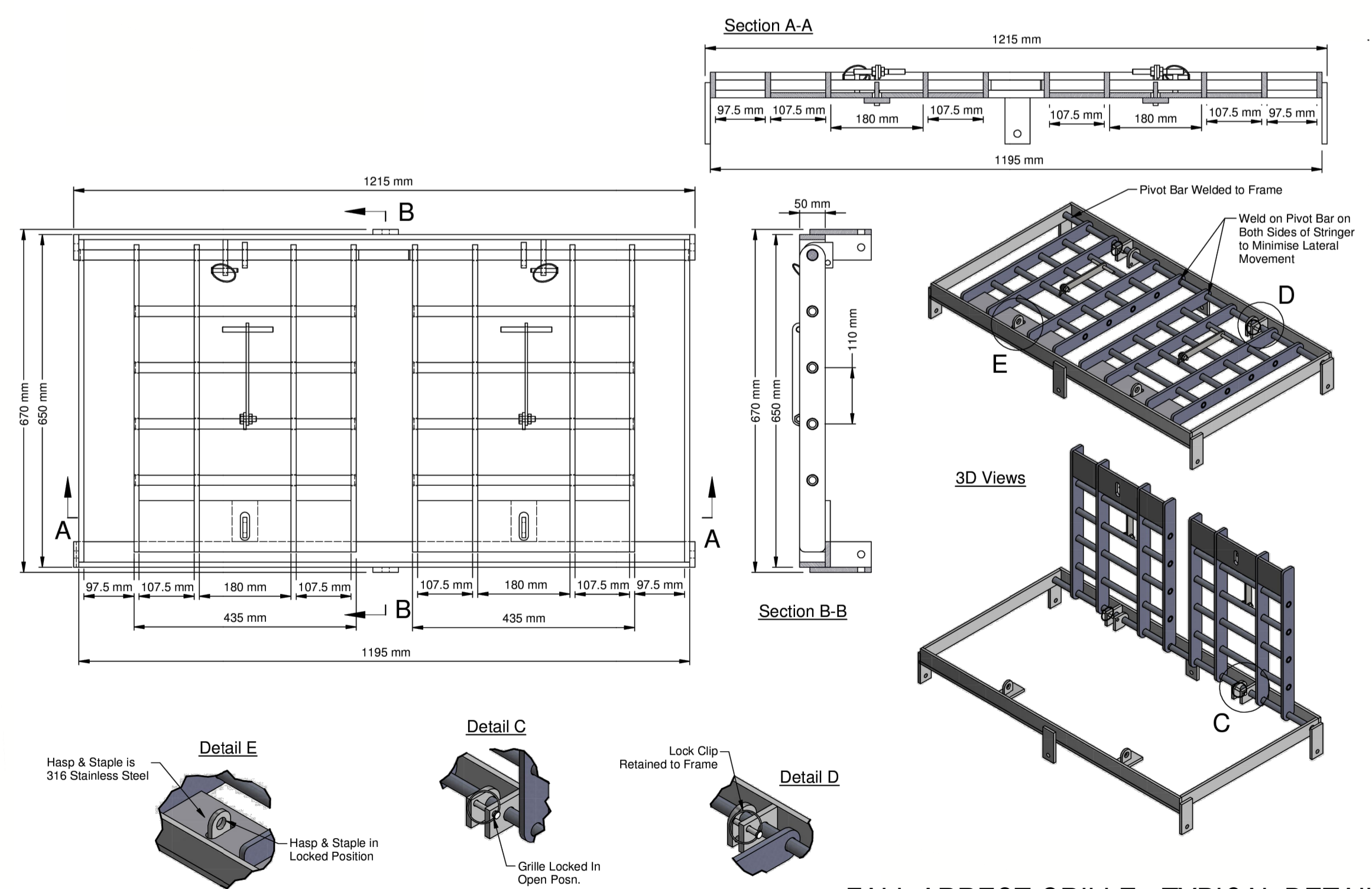


SECTION A-A

HYDROBRAKE DATA

MANUFACTURER	HYDRO INTERNATIONAL
TELEPHONE	01275 678371
TYPE	SHE-0075-3500-2100-3500
FLOWHEAD	3.5 l/s @ 2.10m

To be installed in accordance with manufacturer's specifications and recommendations, before the manhole cover slab is installed.



FALL ARREST GRILLE - TYPICAL DETAIL

Preliminary

Rev	Details	Date	5-11-25 21-7-25	AST AST
-----	---------	------	--------------------	------------

Newett Homes

Yew Tree Road
Birchcliffe, Huddersfield

Flow control manhole

Dwg No. : STE/25/03/13 B

Date : 21-3-25

Scale : Not to scale

Copyright © Shaun Tonge Engineering

SHAUN TONGE ENGINEERING

11 Broomhead Road, Wombwell, Barnsley, S73 0SA.
Mobile 07528 278070 . Email Shauntongeengineering@yahoo.co.uk