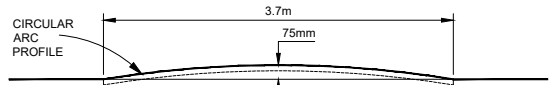
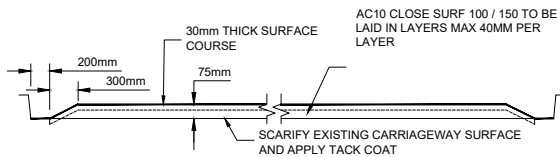


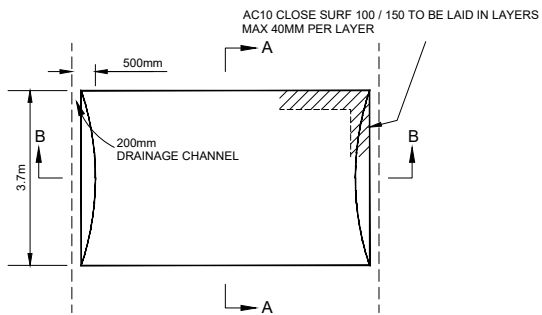
ROUNDTOP ROAD HUMP DETAIL



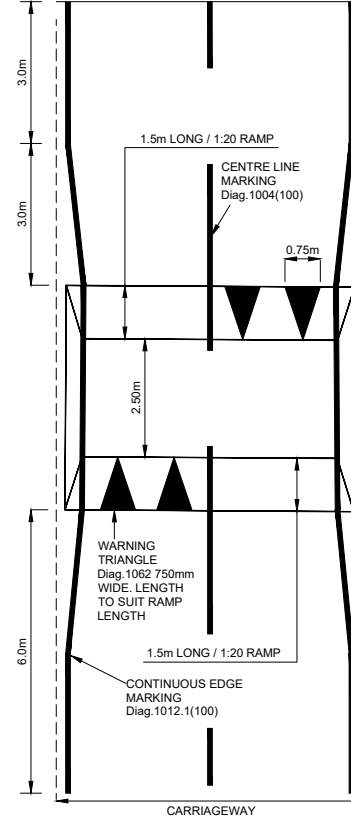
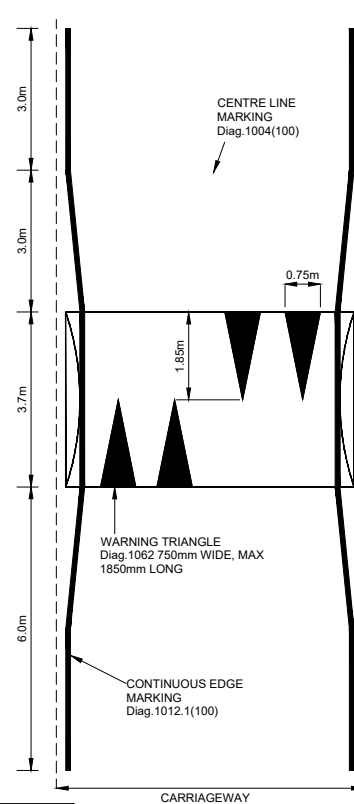
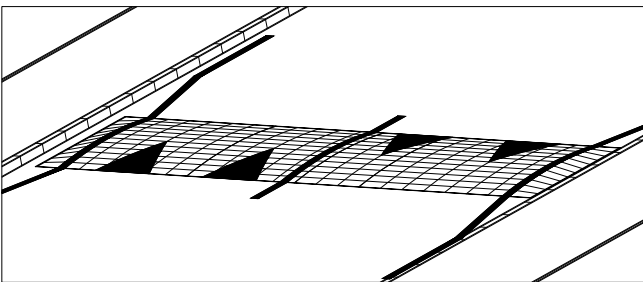
LONGITUDINAL SECTION A-A
VERTICAL SCALE EXAGGERATED



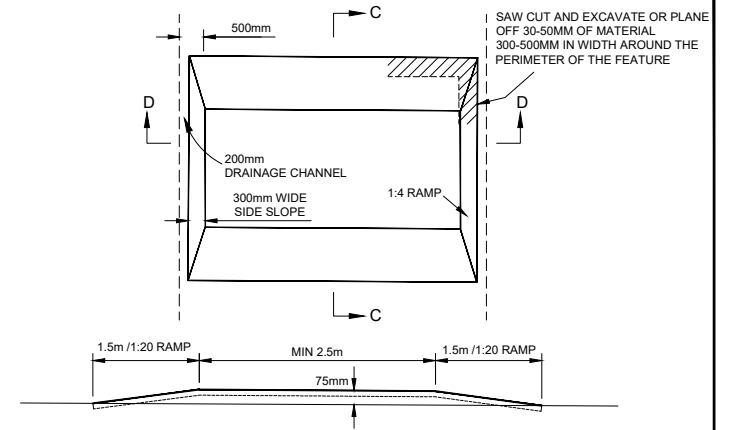
TRANSVERSE SECTION B-B
VERTICAL SCALE EXAGGERATED



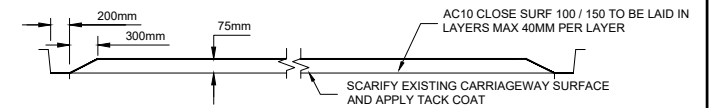
LONGITUDINAL SECTION C-C
VERTICAL SCALE EXAGGERATED



FLATTOP ROAD HUMP DETAIL



LONGITUDINAL SECTION C-C
VERTICAL SCALE EXAGGERATED



TRANSVERSE SECTION D-D
VERTICAL SCALE EXAGGERATED

NOTES

1. SAW CUT AND EXCAVATE OR PLANE OFF 30-50MM OF MATERIAL 200 - 500MM IN WIDTH AROUND THE PERIMETER OF THE FEATURE
2. SCARIFY SURFACE WHERE ROAD HUMPS ARE TO BE CONSTRUCTED AND APPLY TACK COAT TO BOND NEW HUMPS WITH EXISTING CARRIAGEWAY.
3. HUMPS SHALL BE CONSTRUCTED IN LAYERS OF AC10 CLOSE SURF 100 / 150 TO BE LAID IN LAYERS MAX 40MM PER LAYER
4. EACH HUMP SHALL HAVE 4 WARNING TRIANGLE MARKERS AS SHOWN ON THE TYPICAL DETAILS, OR AS SHOWN ON THE SCHEME DRAWINGS. ALL ROAD MARKINGS SHALL BE IN WHITE THERMOPLASTIC SCREED WITH APPLIED BALLOTINI.
5. HUMPS SHALL BE MARKED WITH TEMPORARY WARNING TRIANGLES IN WHITE SPRAY PAINT IF THEY ARE TO BE TRAFFICKED BEFORE PERMANENT MARKINGS ARE APPLIED.
6. FLAT TOP ROAD HUMPS ARE ONLY SUITABLE FOR ROADS 6.50m WIDE, OR GREATER, TO MAINTAIN 2.75m WIDE LANES.
7. REFER TO SCHEME DRAWING DRAWINGS FOR DRAINAGE AND KERBING REQUIREMENTS.
8. ALL ROAD MARKINGS SHALL COMPLY WITH THE TRAFFIC SIGNS REGULATIONS AND GENERAL DIRECTIONS 2016.
9. ALL RAMPS ON THE FLAT TOP HUMPS TO BE HAND LAID



Project

STANDARD DETAILS

Scale

NOT TO SCALE

Drawn

AKKV/AA

Checked

PW

Commercial Regulatory and Operational Service

Title

BLACKTOP ROAD HUMP

Section

HD

Date

APRIL 21

Drawing No.

HD/SD/07/05B

Highway Design
Flint Street, Fartown
Huddersfield, HD1 6LG