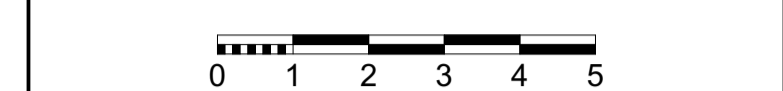
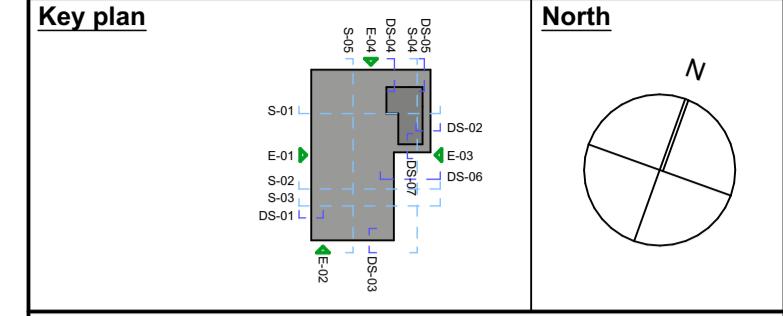


This document is © Bond Bryan Architects Ltd. If in doubt ASK. Drawing measurements shall not be obtained by scaling. Verify all dimensions prior to construction. Immediately report any discrepancies on this document to the Originator. This document shall be read in conjunction with associated models, specifications and related consultants' documents.



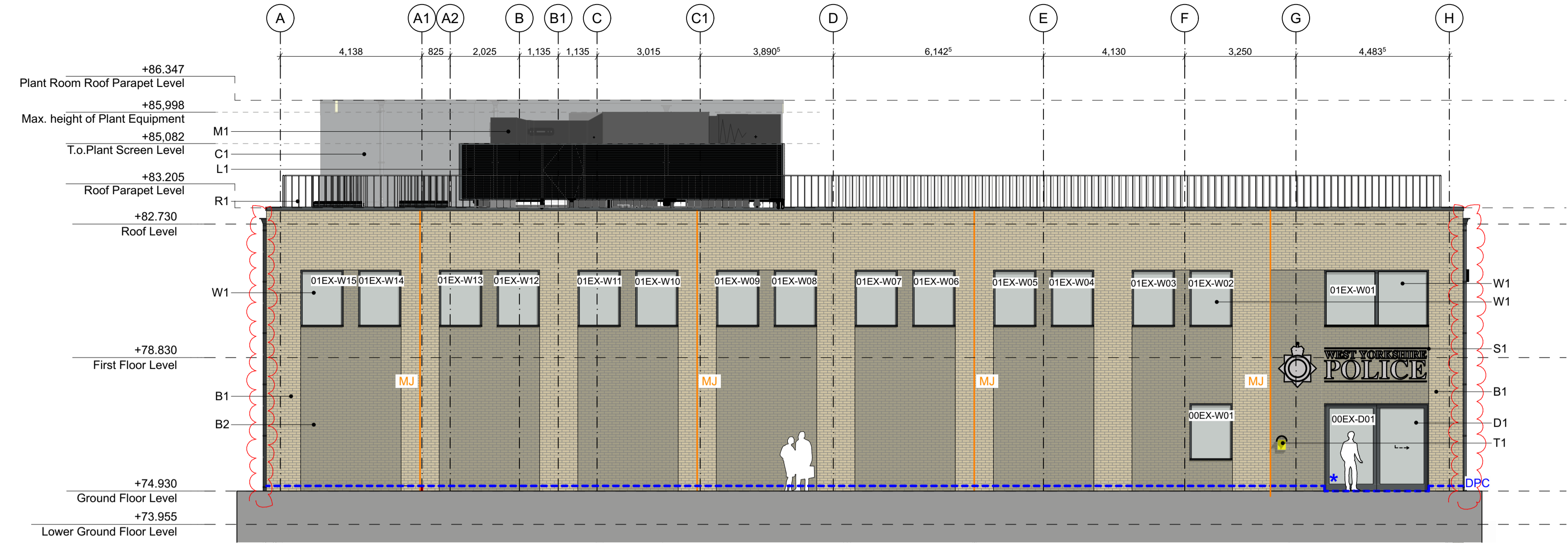
- Key:**
- B1 Facing Brickwork - NBS F10/110A
  - B2 Recessed Brickwork - NBS F10/110B
  - BB1 Bat Box to be central to brick pier and top of box to align with top of window
  - BB2 Bird Box top of box to align with top of window
  - C1 Insulated Cladding Panel - NBS H43/120
  - D1 PPC Aluminium Sliding Door - NBS L20/520
  - D2 PPC Single Swing Door (Glazed) - NBS L20/480A
  - D3 PPC Louvred Door - NBS L20/480B
  - D4 PPC Single Swing Door - NBS L20/480C
  - D5 PPC Single Swing Door - NBS L20/480D
  - L1 1.6m high Plant Enclosure Louvre Screen
  - M1 Roof Level Plant Equipment
  - P1 Rainwater Downpipe - R10/110
  - R1 PPC Railing
  - S1 Signage
  - T1 External Telephone with canopy
  - W1 PPC Aluminium Window - NBS L10/330
- MJ** Movement Joint  
Refer to setting out drawings noted below for MJ setting out.
- \*** Manifestation required to glazing.  
Manifestation appearance to be confirmed.
- DPC

**Notes:**

For setting out dimensions, please see the following BBA drawings:

- 6BKD2-BBA-32-ZZ-D-A-3051 Elevation 1 Setting Out
- 6BKD2-BBA-32-ZZ-D-A-3052 Elevation 2 Setting Out
- 6BKD2-BBA-32-ZZ-D-A-3053 Elevation 3 Setting Out
- 6BKD2-BBA-32-ZZ-D-A-3054 Elevation 4 Setting Out
- 6BKD2-BBA-33-ZZ-D-A-7703 Brick Recess Detail
- 6BKD2-BBA-40-ZZ-D-A-7801 Signage Design Intent

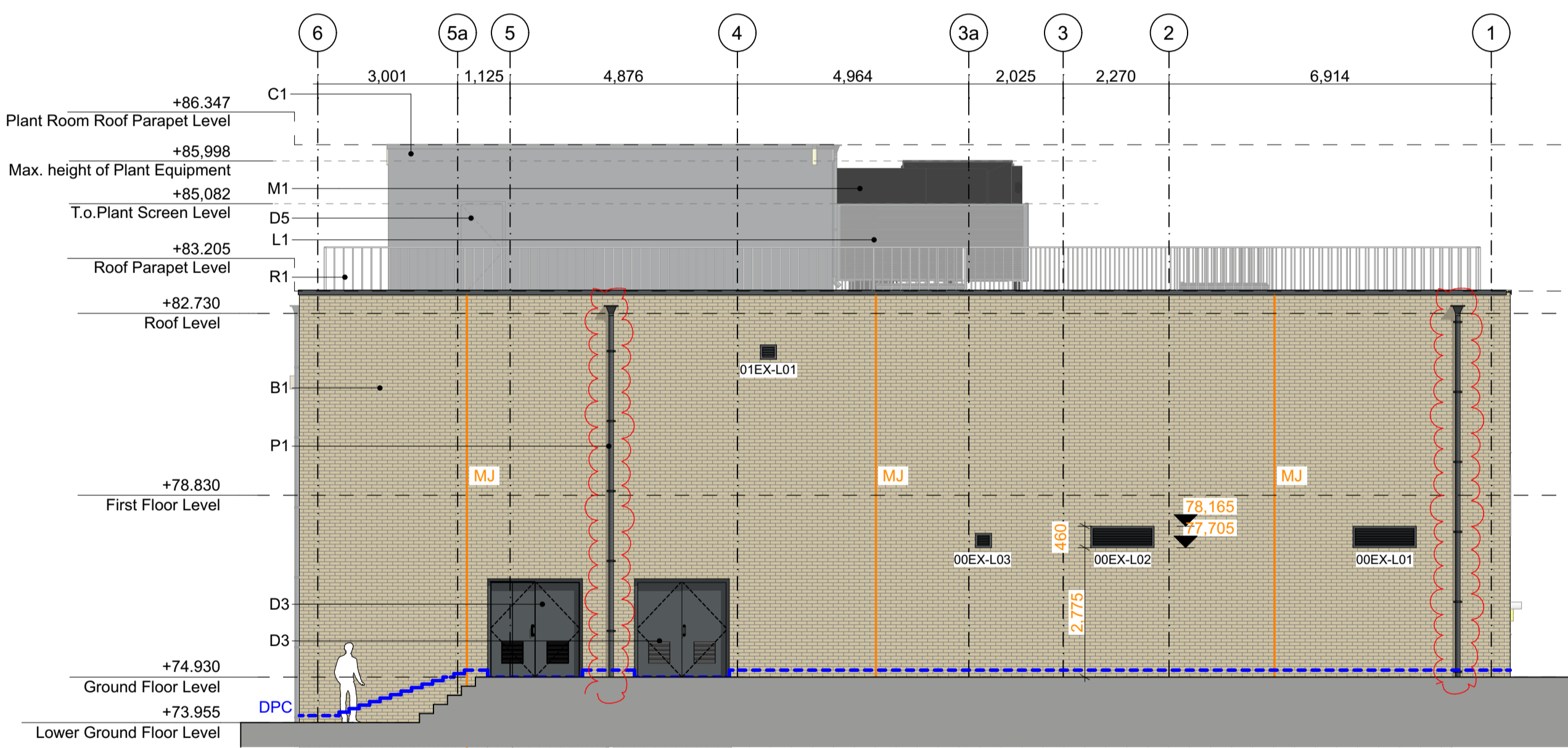
C09	RWP changed to RAL 7016 as per MSC instruction dated 25/03/2026. Bird and Bat boxes added as per Ecologist Species Enhancement Statement	JCC	DH	31/03/2026
C08	RWP at GL1/A moved following Sika coordination, MEP Plant Equipment added. Ground Floor Plant Room door louvre size amended	JCC	AD	03/11/2025
C07	Roof Plant Screen height amended as per DTM minutes dated 15/08/2025. Movement Joint on GL G4 amended as per DTM minutes dated 15/08/2025. Change in name for Second Floor to Roof Level. Drawing amended as per MSC comments dated 11/08/2025. DPC height amended to coordinate with slab edge details	JCC, AD	DH	02/09/2025
C06	Movement Joint on GL H4 added as per DTM dated 01/08/2025	JCC	DH	04/08/2025
C05	Main door amended as per MSC email dated 29/07/2025. Louvre sizes amended as per MEP louvre schedule. Updated to 4P comments	JCC	DH	31/07/2025
Rev	Description	Drawn	Checked	Date



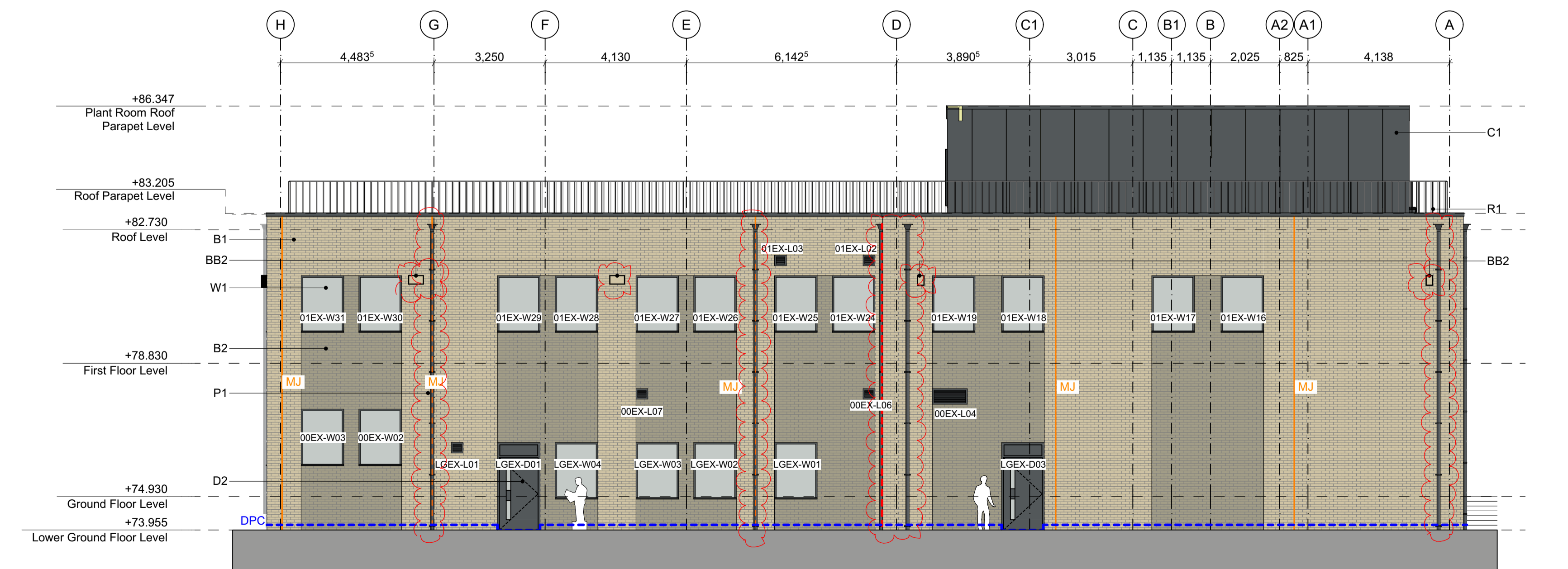
**Elevation 01**  
1:100



**Elevation 02**  
1:100



**Elevation 04**  
1:100



**Elevation 03**  
1:100

# B

BOND BRYAN

info@bondbryan.co.uk  
www.bondbryan.co.uk

---

**Morgan Sindall**

**MORGAN SINDALL**

**6BKD2**

**GA Elevations**

---

Originator project ref <b>22148</b>	Purpose of Issue <b>For Construction</b>
Scale(s) <b>1:100</b>	
Paper size <b>A1</b>	
project originator volume level type role number	revision
<b>6BKD2 - BBA - 32 - ZZ - D - A - 3001</b>	<b>C09</b>

Name: 2024-08-08