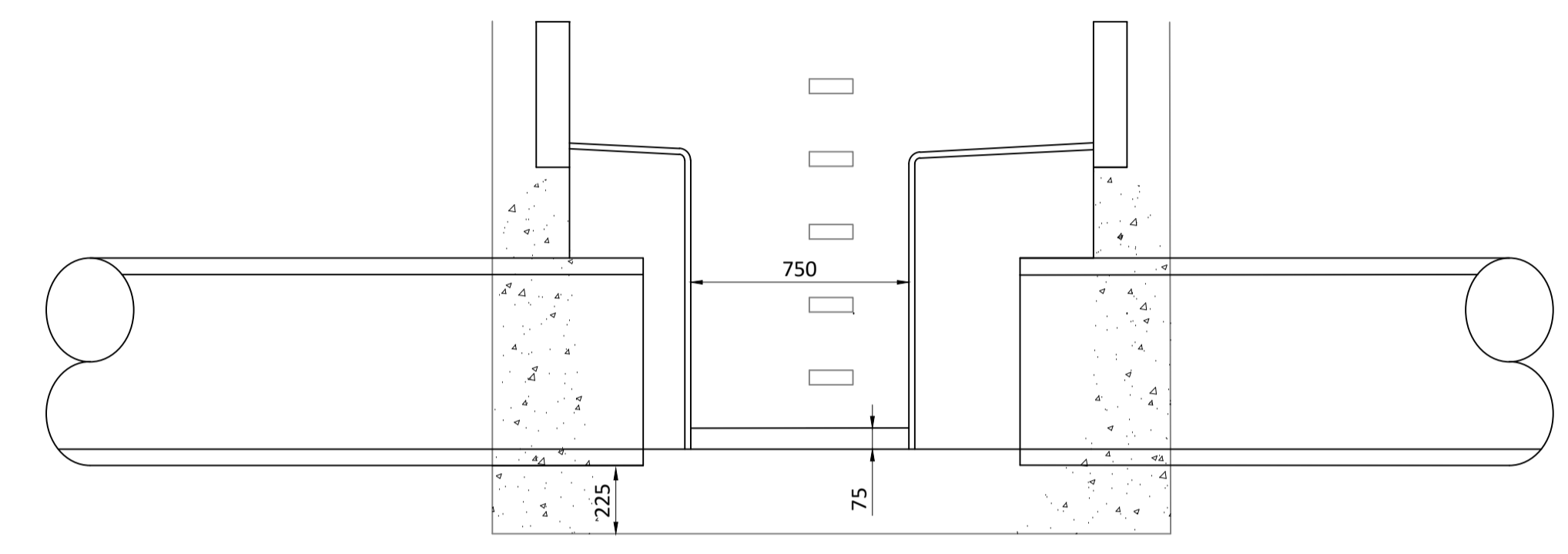
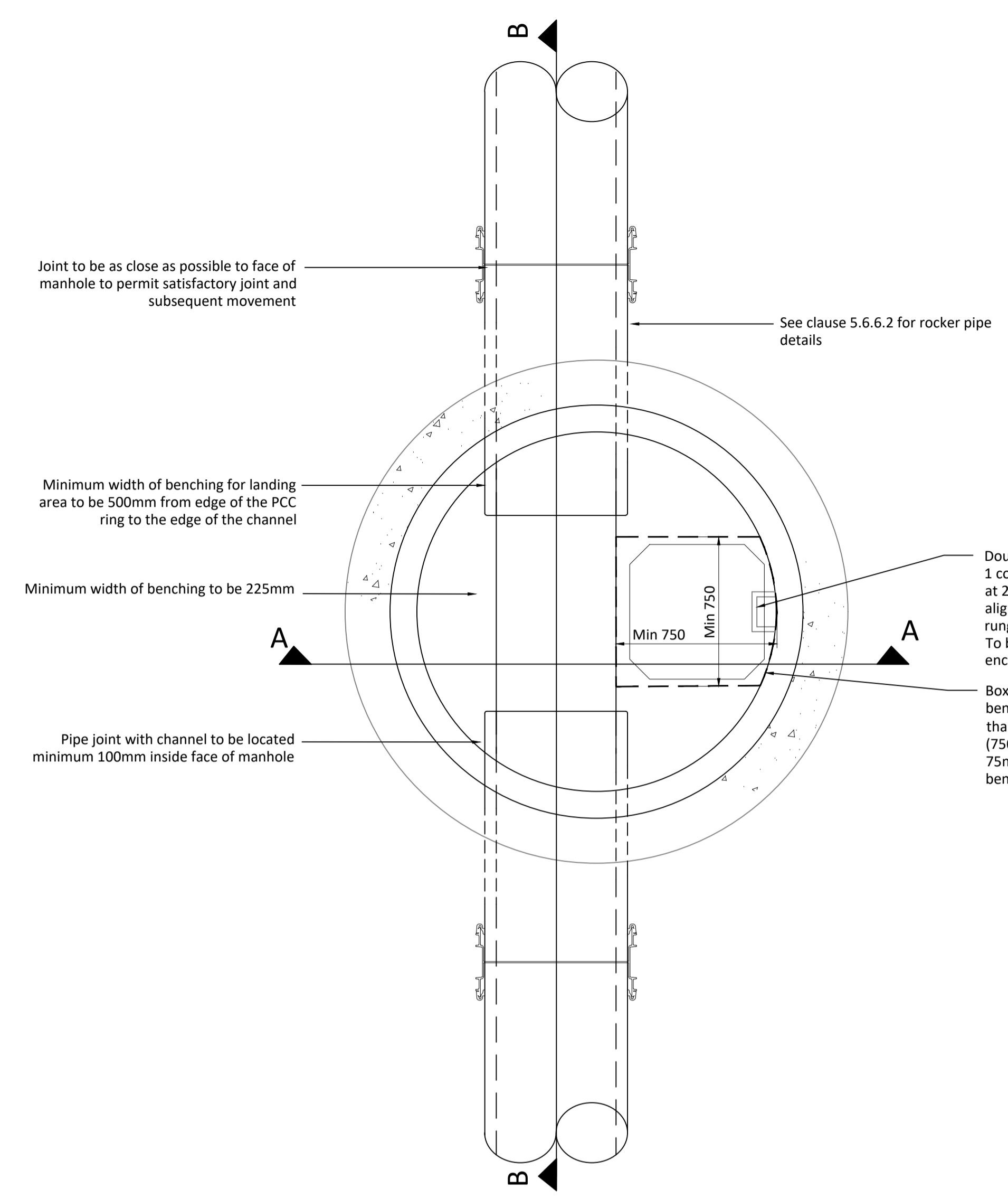


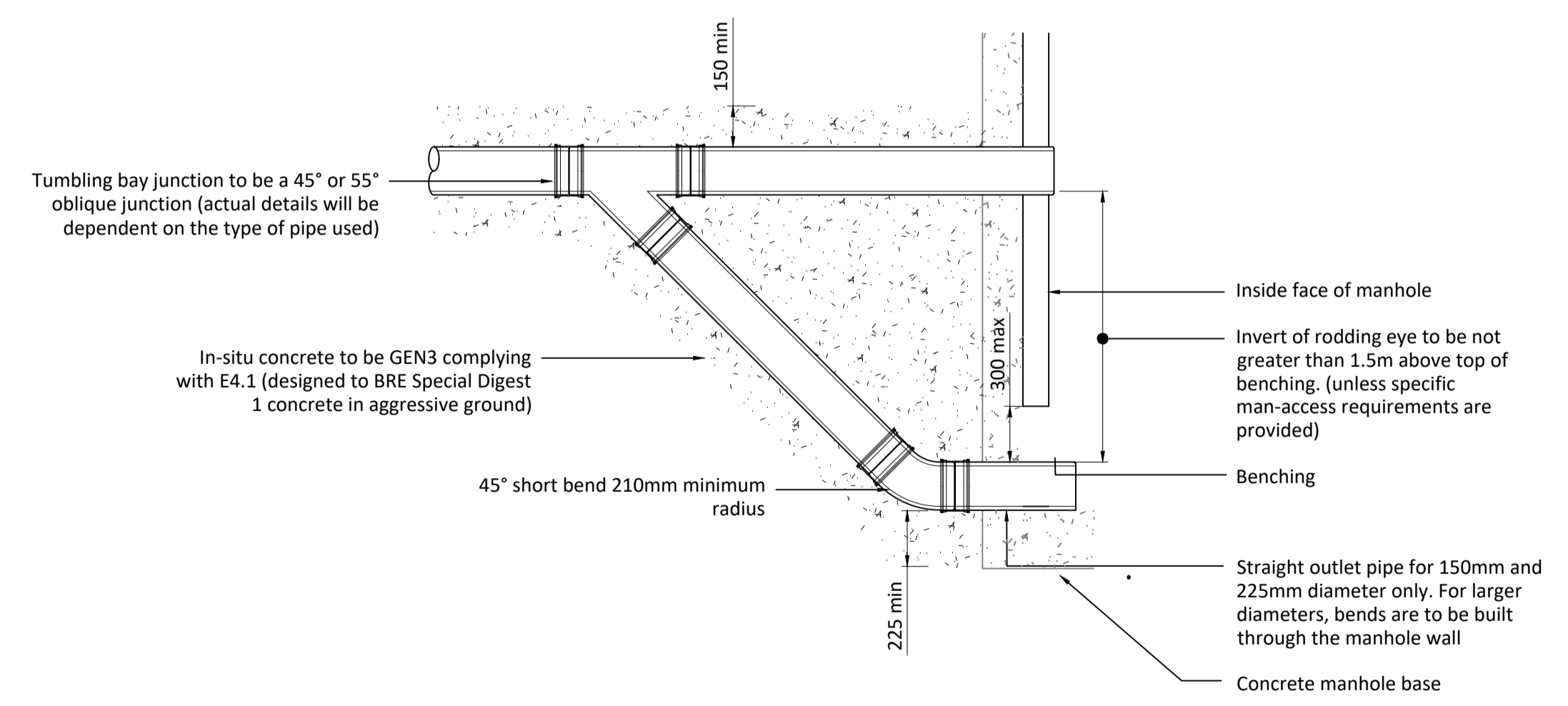
SECTION A-A
For pipe diameter greater than $\phi 600$



SECTION B-B
For pipe diameter greater than $\phi 600$



TYPICAL MANHOLE DETAIL SHOWING BOX OUT
For pipe diameter greater than $\phi 600$

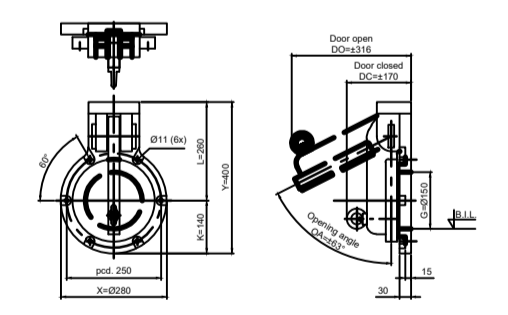


Typical External Ramped Backdrop Detail

Adapt PPE-G 150 HDPE/25 Flap Valve Specification Information
Clause 1.10

- The valve plate and the back plate are produced using HDPE/25
- The hinge pin and ballast weight are produced in SS20 as standard
- The ballast weight can be easily adjusted if required
- The sealing arrangement consists of an EPDM lip seal on the back plate
- The valve plate is also installed on an angle in relation to the back plate to ensure a good seal

Material: HDPE, SS20, EPDM
Opening: 4150mm
Max load from bottom invert level (B.L.): 1.5Mkwc long period (50 years)
SMWC short period (2 hours)
Number of chemical anchors: MB: 6 pieces
All dimensions in mm



Do Not Scale			
DESIGN REVIEW			
Design review by:	**	Checked by:	**
Residual hazards:			

Health, Safety & Environmental Notes

NOTES

Refer to Drawing 1351 - 'S104 Agreement drainage details - sheet 1' for standard drainage notes

Kirklees Highways Notes

All oversize precast concrete manhole circular vertical units and cover slabs including all ancillary concrete products are in full compliance with "BS EN 1917" & "BS 5911-3-A1"

Precast concrete manhole units including their PCC cover slabs shall comply with the relevant provisions of BS EN 1917 and BS 5911-3 and shall be manufactured from concrete with a Design Chemical Class DC-4 unless satisfactory evidence through soil analysis can be provided that a lower class will resist attack from soils and ground water.

All precast concrete manhole shaft units, circular cover, reducing, landing and corbel slabs together with all other ancillary concrete units intended for installation in the highway are marked with "BS EN 1917" & "BS 5911-3" R to confirm that the products represent a manufacturer's declaration that their products meet the requirement of these standards.

Cover slabs are to be installed with a minimum of 300 mm cover to finished levels to comply with National Specifications.

04.12.25	Updated to suit Kirklees requirements	WD	AT	P3
19.09.25	Flap valve detailed added	AT	RP	P2
07.02.25	Initial Issue	WD	AT	P1
Date	Description	By	Chk	Rev

ADEPT
CIVIL AND STRUCTURAL CONSULTING ENGINEERS

Web: www.adeptcsce.com
Email: info@adeptcsce.com
Tel: 0113 239 4518

Office Address: 1912 Mill, Sunny Bank Mills, Farsley, Leeds LS28 5UJ

Project
Blackmoorfoot, Huddersfield

S104 - Drainage Details Sheet 2 of 3

Client
Countryside Partnerships

Scale @ A1	Initial author	Initial checker	Approver	Initial Date
1:20	WD	AT	RP	Feb 25'
Status	Purpose	Adept Ref		
S2	Preliminary	08.24007		
Project Number	Originator	Volume	Level	Type
08.24007-ACE-00-ZZ-D-C-1352				
Rev.	P3			