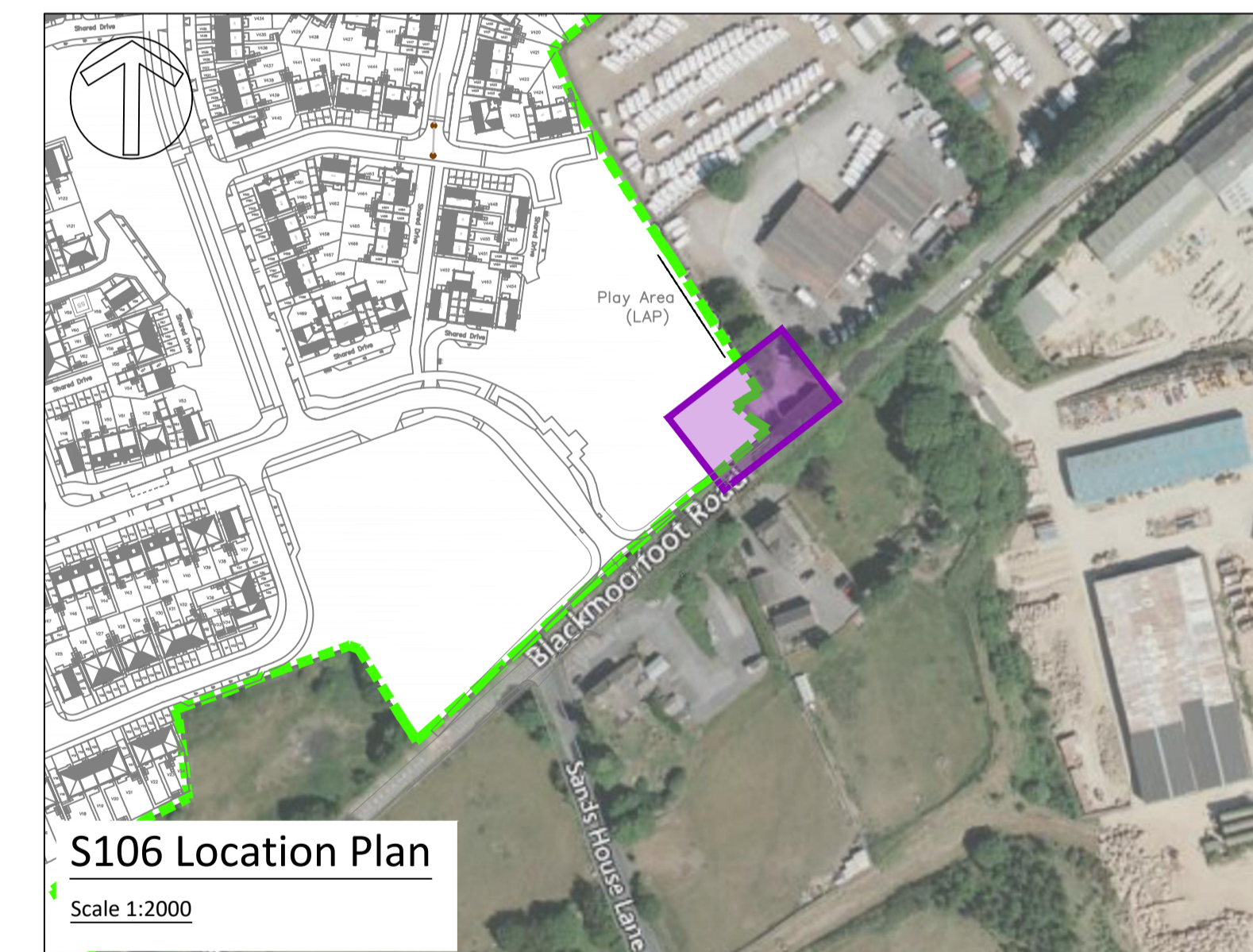
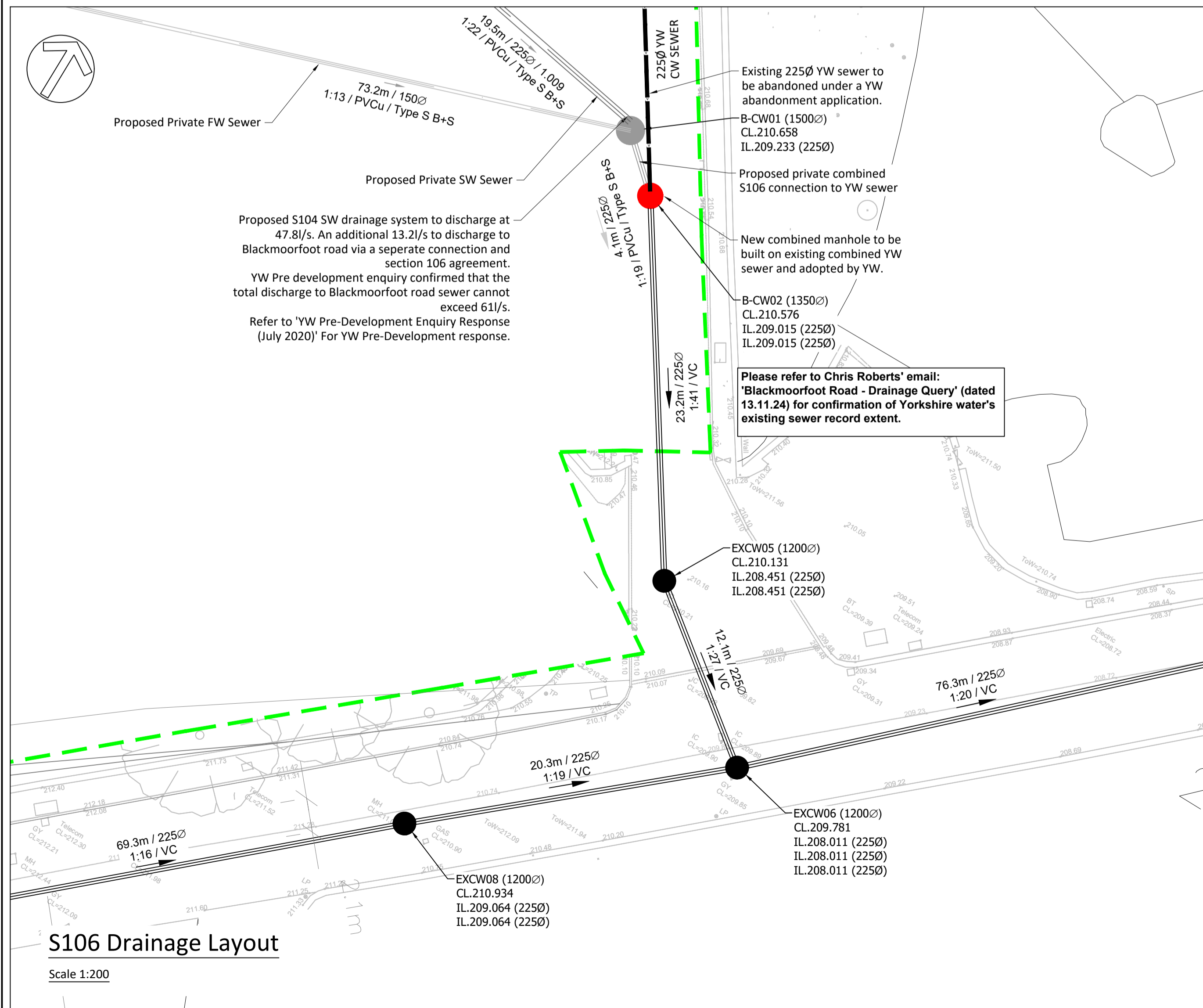


B-CW02 Outfall Base Plan and Section

Scale 1:20



Do Not Scale

Drawing Notes

Drawing & schedule based on the following information:

Architect's drawing/model:	REF#214_0880_Technical Planning Layout (Full Site)_For Information_D_0
Revision:	D
Received:	21.08.24
Topographic Survey:	3606-SU001-005_25 Surveys Ltd - Sitewide Topo with Added Trees (October 2023)_For Information_B_0
Received:	8

Residual Hazards

--

Health, Safety & Environmental Notes

--

Key:

	Existing YW Combined Sewer
	Proposed S104 Surface Water Sewer
	Proposed S104 Foul Water Sewer
	Proposed S104 Combined Sewer
	Proposed S106 Combined Sewer
	Site boundary

07.02.25	Drawing updated to suit YW comments	AT	RP	P2
18.12.24	Initial Issue	AT	RP	P1

Date	Description	By	Chk	Rev

ADEPT
CIVIL AND STRUCTURAL CONSULTING ENGINEERS

Web: www.adeptcsce.com
Email: info@adeptcsce.com
Tel: 0113 239 4518

Office Address: 1912 Mill, Sunny Bank Mills, Farsley, Leeds LS28 5UJ

Project: **Blackmoorfoot, Huddersfield**

Title: **S106 Blackmoorfoot Layout**

Client: **Countryside Partnerships**

Scale @ A1 As Shown	Initial author AT	Initial checker RP	Approver RP	Initial Date NOV 24
Status S2	Purpose Preliminary	Adept Project Number 08.24007		Rev. P2
Project-Originator-Functional Breakdown-Spatial Breakdown-Form-Disipline-Number				
08.24007-ACE-00-ZZ-D-C-1651				