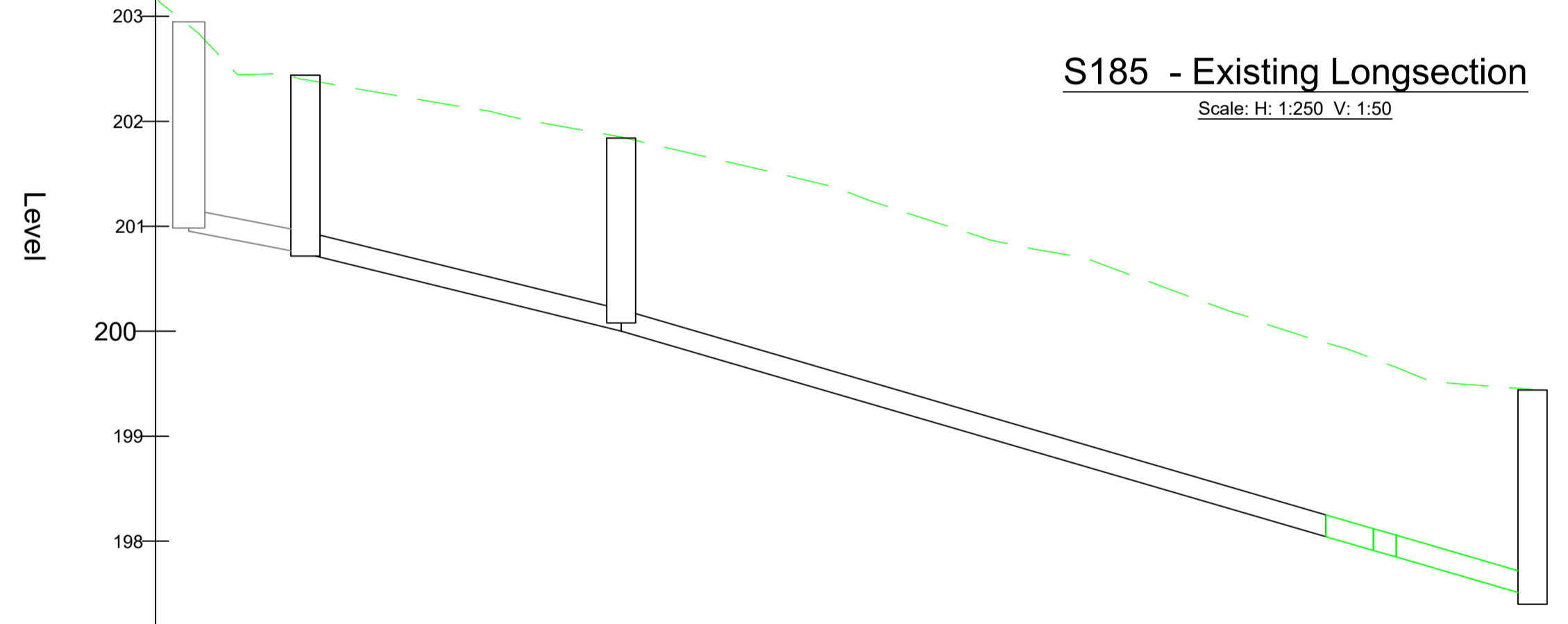
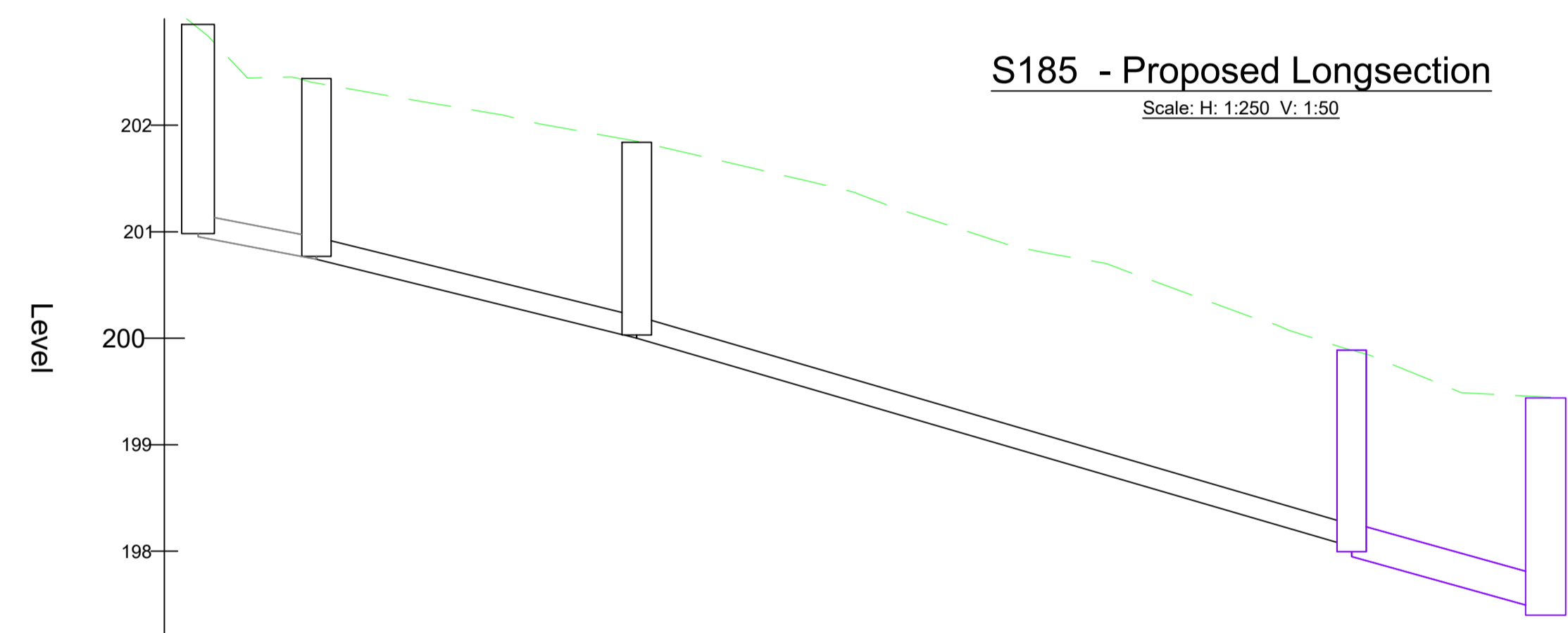


Please refer to Chris Roberts' email: 'Farmhouse Court - Drainage Query' (dated 27.11.24) for confirmation of Yorkshire water's existing sewer record extent and the upsizing of existing 1500 pipe to a 2250 pipe.

Existing manhole will need to be inspected with a Yorkshire Water Inspector to check that it can accommodate the new connection and to check if any remedial works are required - it may be necessary to reconstruct the manholes at the Developers expense.



Chainage	Existing Levels	Structure Name	CW Cover Level	CW Invert Levels	CW Pipe Data
00.000	203.188	CW01	202.95	200.983	1500 / 1.26 / 5.56m MATERIAL - VC / Type S B&S Pipe Strength: 40KN/m
10.000	202.296	EXCW01	202.44	200.770	1500 / 1.20 / 15.04m MATERIAL - VC / Type S B&S Pipe Strength: 40KN/m
20.000	201.928	EXCW02	201.84	200.030	1500 / 1.17 / 33.57m MATERIAL - VC / Type S B&S Pipe Strength: 40KN/m
30.000	201.486				
40.000	200.858				
50.000	200.276	CW02	199.89	198.072	2250 / 1.18 / 9.37m MATERIAL - VC / Type S B&S Pipe Strength: 40KN/m
60.000	199.563	EXCW04	199.44	197.475	
66.320					

Chainage	Existing Levels	Structure Name	CW Cover Level	CW Invert Levels	CW Pipe Data
00.000	203.188	CW01	202.95	200.983	1500 / 1.26 / 5.56m MATERIAL - VC / Type S B&S Pipe Strength: 40KN/m
10.000	202.296	EXCW01	202.44	200.770	1500 / 1.20 / 15.04m MATERIAL - VC / Type S B&S / Type S B&S Pipe Strength: 40KN/m
20.000	201.928	EXCW02	201.84	200.030	1500 / 1.17 / 33.57m MATERIAL - VC / Type S B&S Pipe Strength: 40KN/m
30.000	201.486				
40.000	200.858				
50.000	200.276				
60.000	199.584				
66.719		EXCW04	199.44	197.500	1500 / 1.17 / 6.49m MATERIAL - VC / Type S B&S Pipe Strength: 40KN/m

Structure Reference	Chamber Type	Cover Level (mAOD)	Depth to Invert (m)	Cover Details	Pipe Invert Level (mAOD)	Coordinates E, N	Comments
CW02	1200Ø Type B	199.888	1.891	Type: D400 Size: 600x600	150 Ø = 198.072 (IN) 225 Ø = 197.997 (OUT)	E: 411757.918 N: 414894.735	
EXCW01	1200Ø Existing	202.440	1.723	Type: As Existing Size:	150 Ø = 200.770 (IN) 150 Ø = 200.770 (OUT)	E: 411711.538 N: 414884.673	
EXCW02	1200Ø Existing	201.840	1.760	Type: As Existing Size:	150 Ø = 200.030 (IN) 150 Ø = 200.030 (OUT)	E: 411726.482 N: 414882.959	
EXCW04	1200Ø Existing	199.440	2.040	Type: As Existing Size:	225 Ø = 197.475 (IN)	E: 411767.187 N: 414893.394	

Yorkshire Water Notes

- All adoptable sewer works and material to be in accordance with "Code for Adoption". The Relevant British/European and Yorkshire Water's Standards/Requirements/Addendum to the Mechanical and Electrical Specification and Kitemarked.
- Manhole covers shall/must have a clear opening of 600mm and shall be Class D400 to BS EN 124 with 150mm deep frames in highways.
- Filled ground must be filled and consolidated under the supervision and to the satisfaction of Yorkshire Water before any sewer works are carried out.
- Yorkshire Water is not obliged to accept filter drain/land drainage run-off into the public sewer network or adoptable drainage system (directly or indirectly). An alternative method of disposal of the land drainage run-off will therefore be required and you will have to liaise with the Local Authority, Land Drainage Section regarding the disposal of the filter drain/land drainage run-off.
- The adoptable sewers should be a minimum of 1m and manholes 0.5m from kerb faces and service margins.
- Sewers must have 5 metres clearance from trees and hedges or the width of the canopy at mature height.
- Sewers to be laid in Class "S" Bedding (150mm granular bed and surround). Where depth of cover to top of the sewer is less than 1.2m in highways and verges (or less than 900mm in nonvehicular access areas) then a concrete slab should be provided above granular bed and surround.
- Bedding and backfill material to conform to the requirement of Water Industry Specification 4-08-02 (Table A2).
- Yorkshire Water policy is that Type "C" brick manholes and 1050mm diameter manhole rings are not preferred. Instead, it is preferred that you use a type "B" manhole with 1200mm diameter or 1500mm diameter rings, with the opening sited over the channel where depth of cover to pipe soffit is 1 - 1.5m.
- Adoptable plastic sewer pipes to be BSI Kitemarked (certified to WIS 4-35-01 and BS/EN13476). Adoptable plastic sewer pipes to be laid in maximum 3 metre lengths unless there is a specific operational need to lay longer lengths. Plastic channel sections in manholes are not acceptable and Yorkshire Water would require clay ware channel in manholes.
- The minimum crushing strength for clay pipes should be as follows: 100mm dia. 40KN/m, 150mm dia. 40KN/m, 225mm dia. 45KN/m and 300mm dia. 72KN/m. The minimum crushing strength for concrete pipes should be - (Class 120 to EN 1916/BSS911-1 2002). Plastic pipes should conform to WIS 4-35-01 and BS EN13476.
- Where a B125 cover and frame has been approved, this must not be coated in plastic and must have lifting eyes suitably sized to accommodate standard lifting keys. Screw down covers are not acceptable.
- There must be enough clearance at crossovers to accommodate bedding to both pipes, approx. 300mm : if crossover is near the rocker then the clearance needed may need to be increased".

Do Not Scale

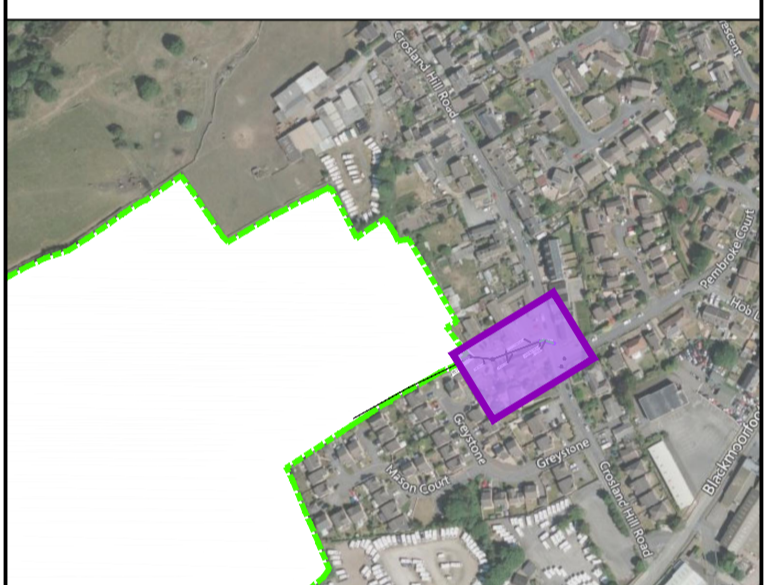
Drawing Notes

Drawing & schedule based on the following information:
 Architect's REF#214_0880_Technical Planning Layout (Full Site)_For Information_D_9
 Revision: D
 Received: 21.08.24
 Topographic Survey: 3606-SU001-005_25 Surveys Ltd - Sitewide Topo with Added Trees (October 2023)_For Information_B_0
 Revision: B
 Received:

Health, Safety & Environmental Notes

Key:

- Existing YW Combined Sewer
- Proposed Combined S185 Sewer
- Proposed S104 Surface Water Sewer
- Proposed S104 Foul Water Sewer
- Proposed S104 Combined Sewer
- Abandoned YW Combined Sewer
- Existing Ground Level
- Site boundary



Viewpoint Location Plan:
Scale: 1:5000

Address = Farmhouse Court,
Crosland Hill,
Millsbridge,
Kirkstiles,
West Yorkshire,
England,
HD4 5PH,
United Kingdom

Easting = 411748
Northing = 414893

Datum: OS Level Datum
Using the OS GPS Network and applying OSGM15 National Geoid Model to obtain local area conditions.

05.03.25	Updated to suit existing conditions and YW comments	WD	AT	P2
18.12.24	Initial Issue	AsE	AT	P1

ADEPT
CIVIL AND STRUCTURAL CONSULTING ENGINEERS

Web: www.adeptcsc.com
Email: info@adeptcsc.com
Tel: 0113 239 4518

Office Address:
1912 Mill, Sunny Bank Mills,
Farsley, Leeds LS28 5UJ

Project
Blackmoorfoot, Huddersfield

Title
S185 Proposed Layout

Client
Countryside Partnerships

Scale @ A1 1:100	Initial author ASE	Initial checker AT	Approver RP	Initial Date 22.11.24
Status S2	Purpose Preliminary	Adept Project Number 08.24007		
Project-Originator/Functional Breakdown-Spatial Breakdown-Form-Disipline-Number				Rev: P2
08.24007-ACE-00-ZZ-D-C-1400				