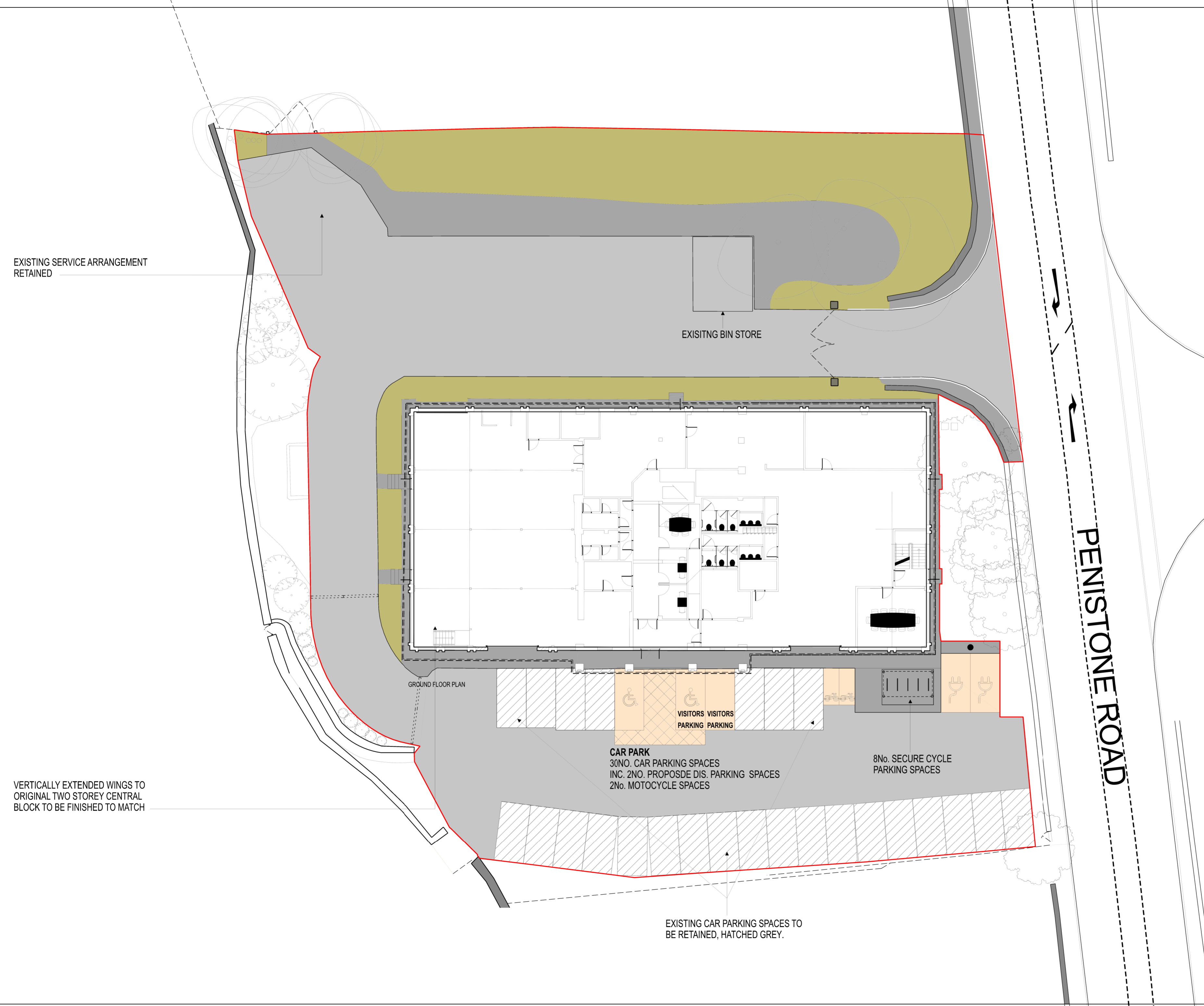


Notes:
 This drawing is the sole copyright of KPP Architects Ltd and reproduction in any form is forbidden unless permission is obtained in writing.
 Do not scale from this drawing. Any discrepancies on site should be brought to the attention of KPP Architects Ltd.
 Work and materials must comply with the current building regulations and codes of practice and be read in conjunction with building specifications and other sub-contractors information. All materials are to be installed in strict accordance with the recommendations of the manufacturers.



EXISTING SERVICE ARRANGEMENT
RETAINED

EXISTING BIN STORE

PENISTONE ROAD

VERTICALLY EXTENDED WINGS TO
ORIGINAL TWO STOREY CENTRAL
BLOCK TO BE FINISHED TO MATCH

GROUND FLOOR PLAN

VISITORS VISITORS
PARKING PARKING

CAR PARK
30NO. CAR PARKING SPACES
INC. 2NO. PROPOSED DIS. PARKING SPACES
2NO. MOTORCYCLE SPACES

8NO. SECURE CYCLE
PARKING SPACES

EXISTING CAR PARKING SPACES TO
BE RETAINED, HATCHED GREY.

P02	EXISTING BIN STORE ADDED	AB	MAR '26	
P01	ISSUED FOR PLANNING	AB	FEB '25	
Rev	Description	By	Chkd	Date

Client

RELIANCE PRECISION LIMITED

Project Title

ROWLEY MILLS

Drawing Title

PROPOSED SITE PLAN

KPP ARCHITECTS
 Lodge House
 12 Town Street
 Horsforth, Leeds LS184RJ
 T : +44 (0) 113 2390460
 E : architects@kpp-leeds.co.uk
 W : www.kpp-leeds.co.uk

Scale	Size	Date	Drawn	Checked
1:200	A2	FEB '24	BC	AB

Status
PLANNING

KPP Job No 2421	Rev P02
Number 2104	