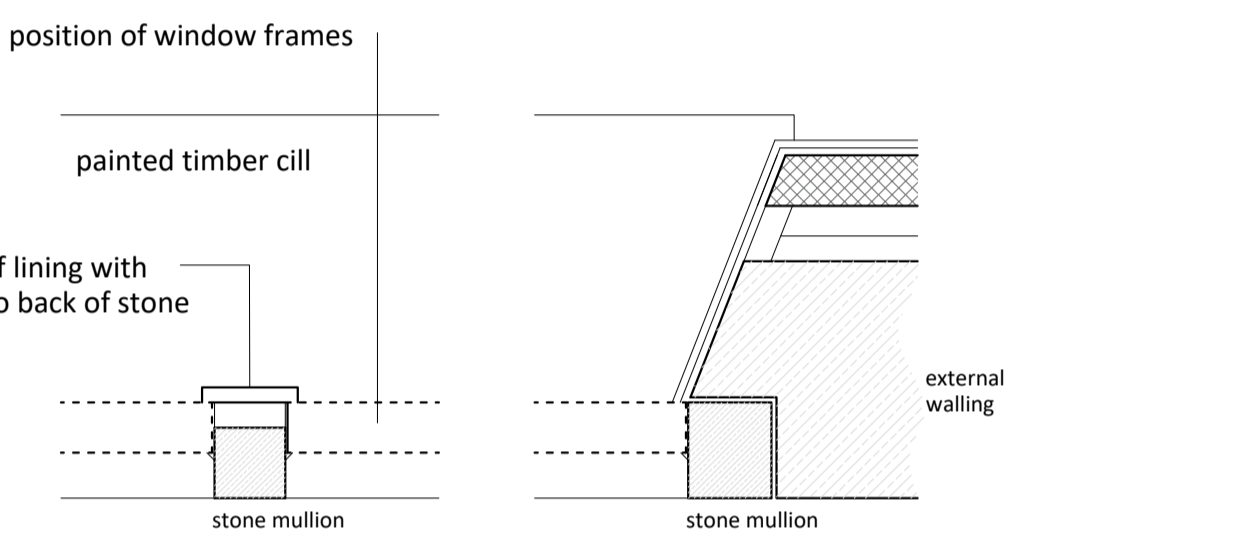


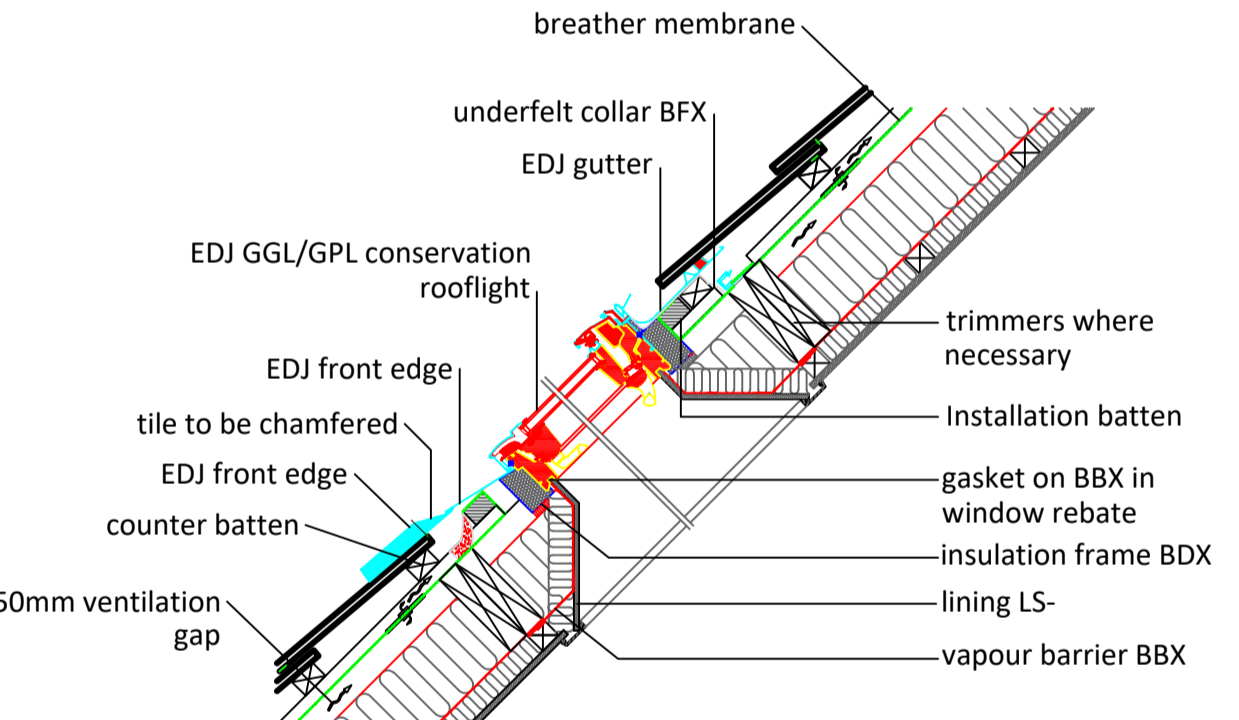
EAST ELEVATION

NORTH ELEVATION

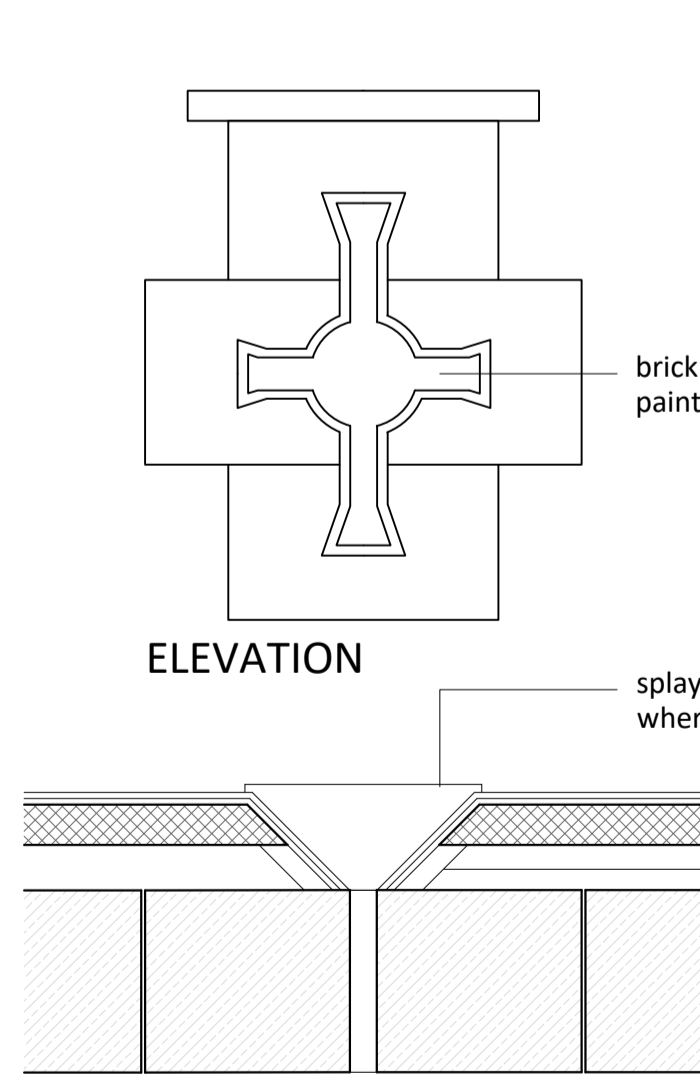
SOUTH ELEVATION



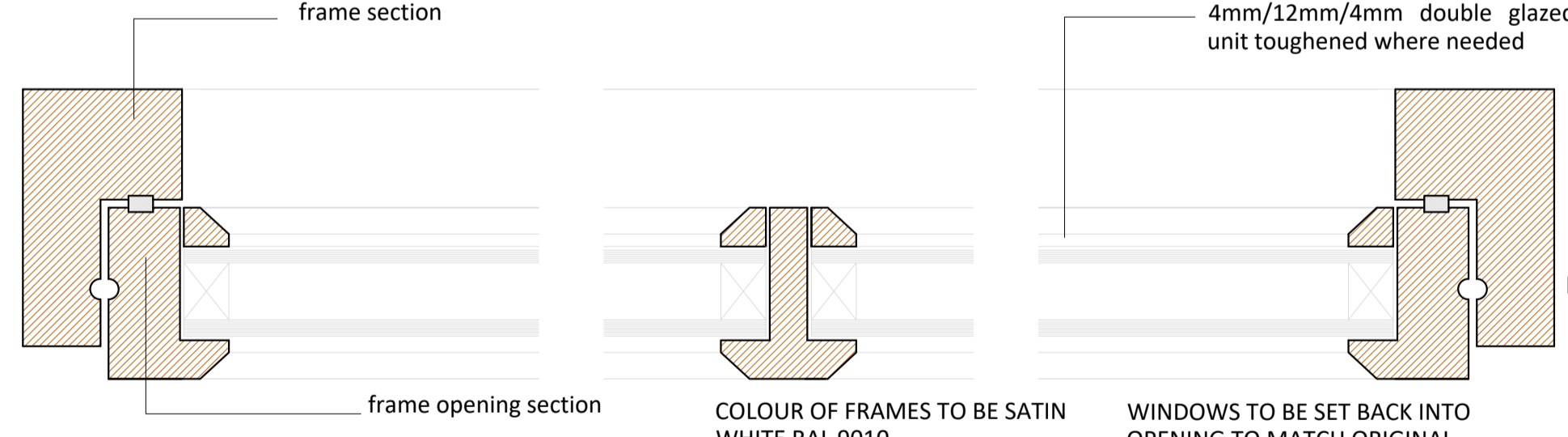
MULLION DETAIL 1:20 JAMB DETAIL 1:20



CONSERVATION ROOF WINDOW DETAIL 1:20

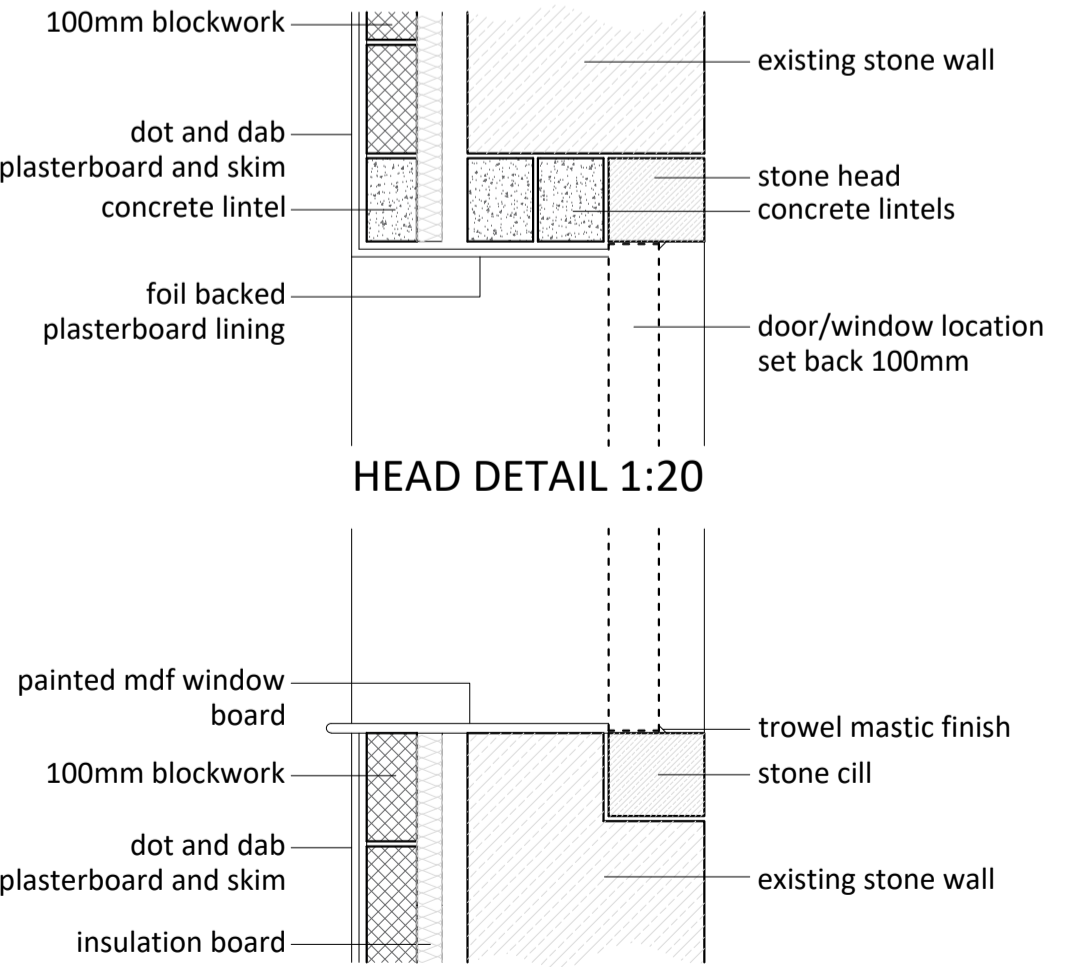


PLAN STONE FEATURE DETAIL 1:20



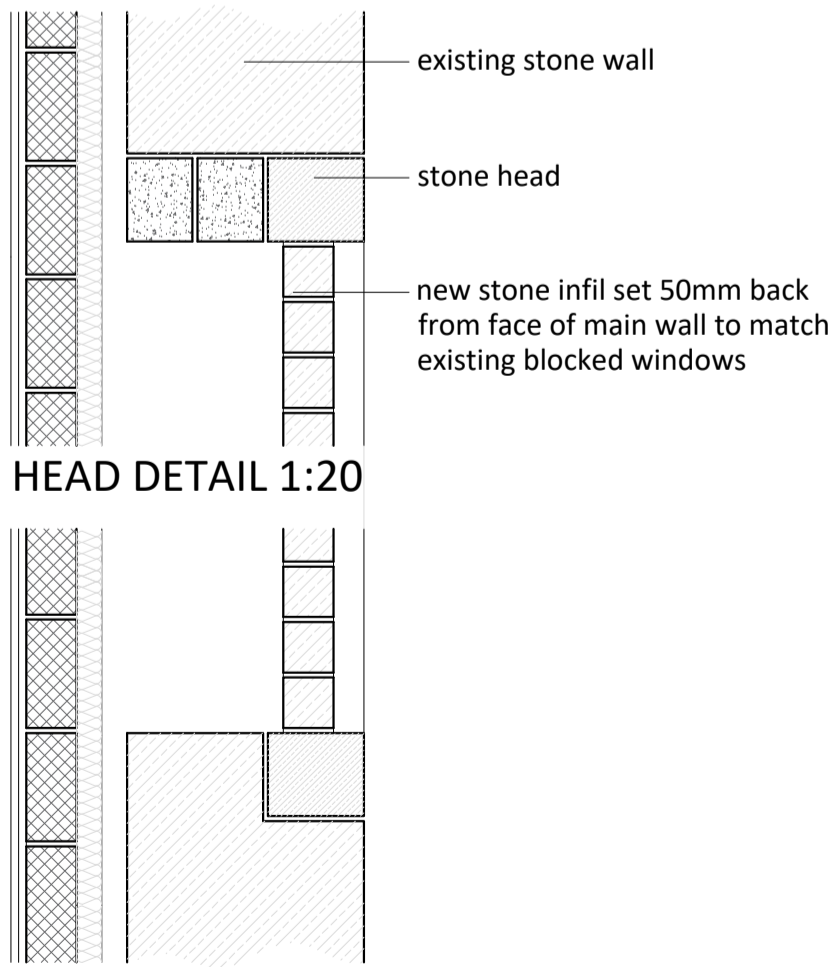
TIMBER OPENING WINDOW SECTION 1:2

TIMBER FIXED WINDOW SECTION 1:2



HEAD DETAIL 1:20

CILL DETAIL 1:20 WINDOW RECESS SECTION



HEAD DETAIL 1:20

CILL DETAIL 1:20 WINDOW INFILL SECTION

GLAZING:
Generally windows to be high performance to BS 6375 part 1 and 2 and to have 20mm sealed double-glazed units throughout to BS 5713. Glazing between finished floor level and 800mm above that level in windows and 1500mm above that level in doors and screens should be laminated in accordance with BS 6262 and in current part N of the Building Regulations.

VELUX ROOFLIGHTS
New roof lights to be Velux type top hung 600mm x 900mm including all velux standard associated flashings etc. NOTE- All roof timbers to be doubled up around opening.

ESCAPE WINDOW
Escape window to bedrooms in accordance with part B i.e the window is to have an unobstructed openable area that is at least 0.33m² and at least 450mm high and 450mm wide (the route through the window may be an angle rather than straight through). The bottom of the openable area should be not more than 1100mm above the floor.

WINDOWS AND DOORS
Windows and doors to be treated hardwood and painted, large windows to be aluminium due to size of glazing. Sealed double glazed units to comprise of Low E glass (EN=0.15) all to achieve min U-value of 1.4W/m²K. Windows should not exceed 25% of total floor area and include rubber draught strip to opening lights. External doors to have rubber draught strip.