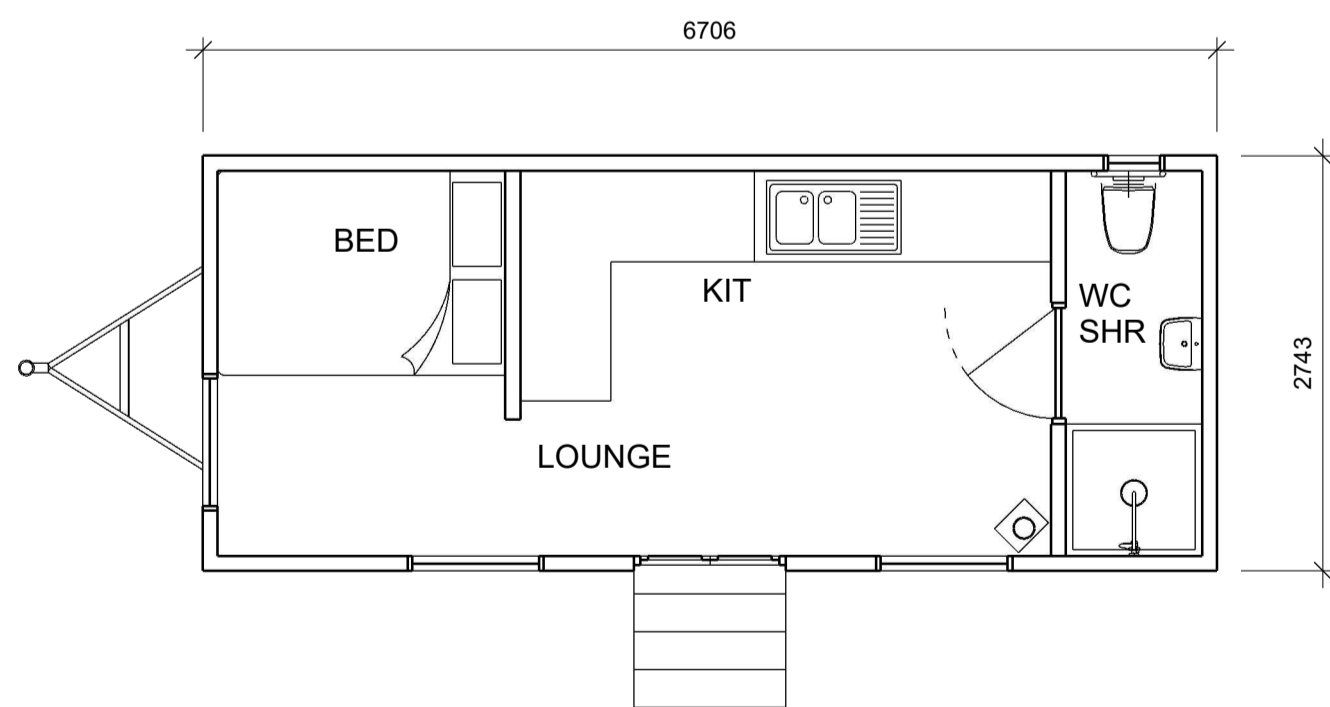
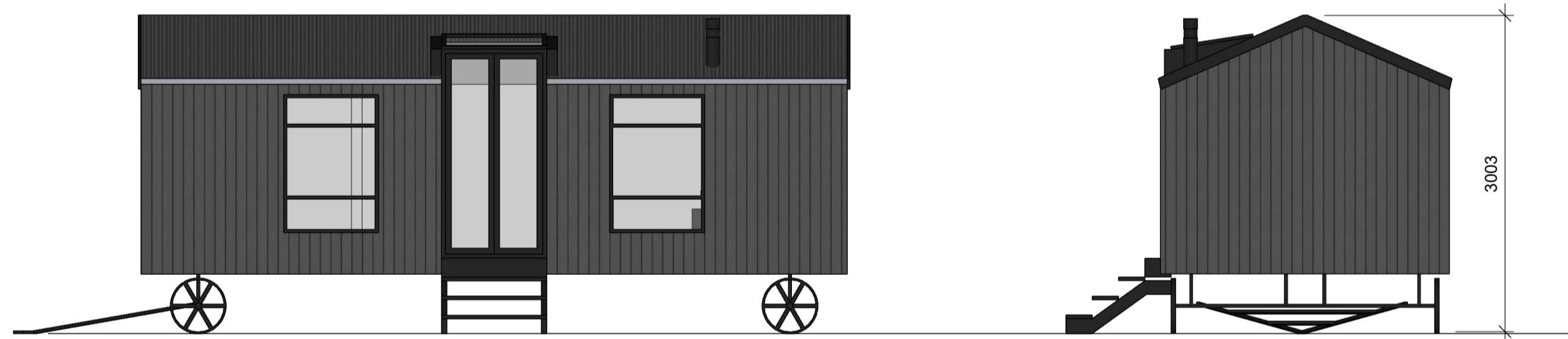
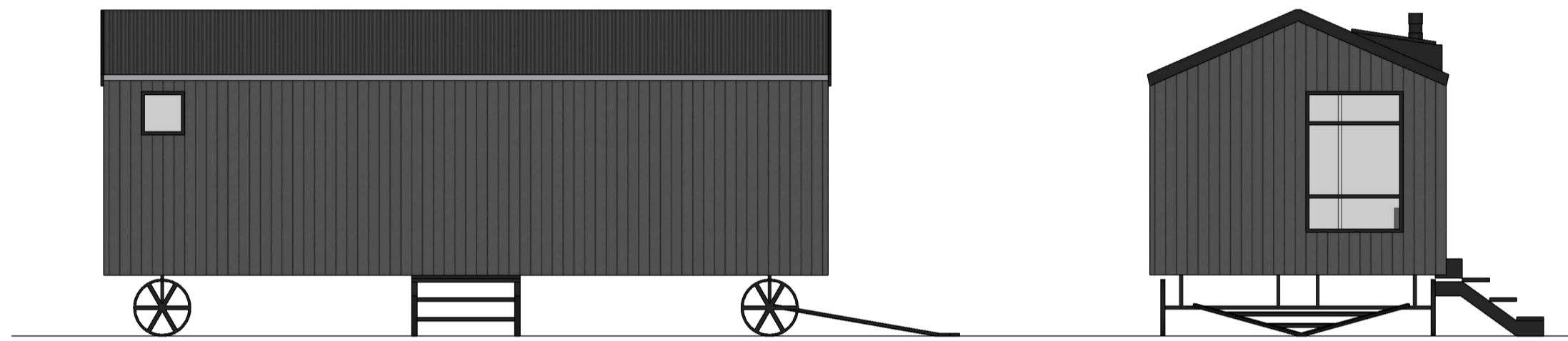




Prefab shepherds hut mobile
 no foundations,

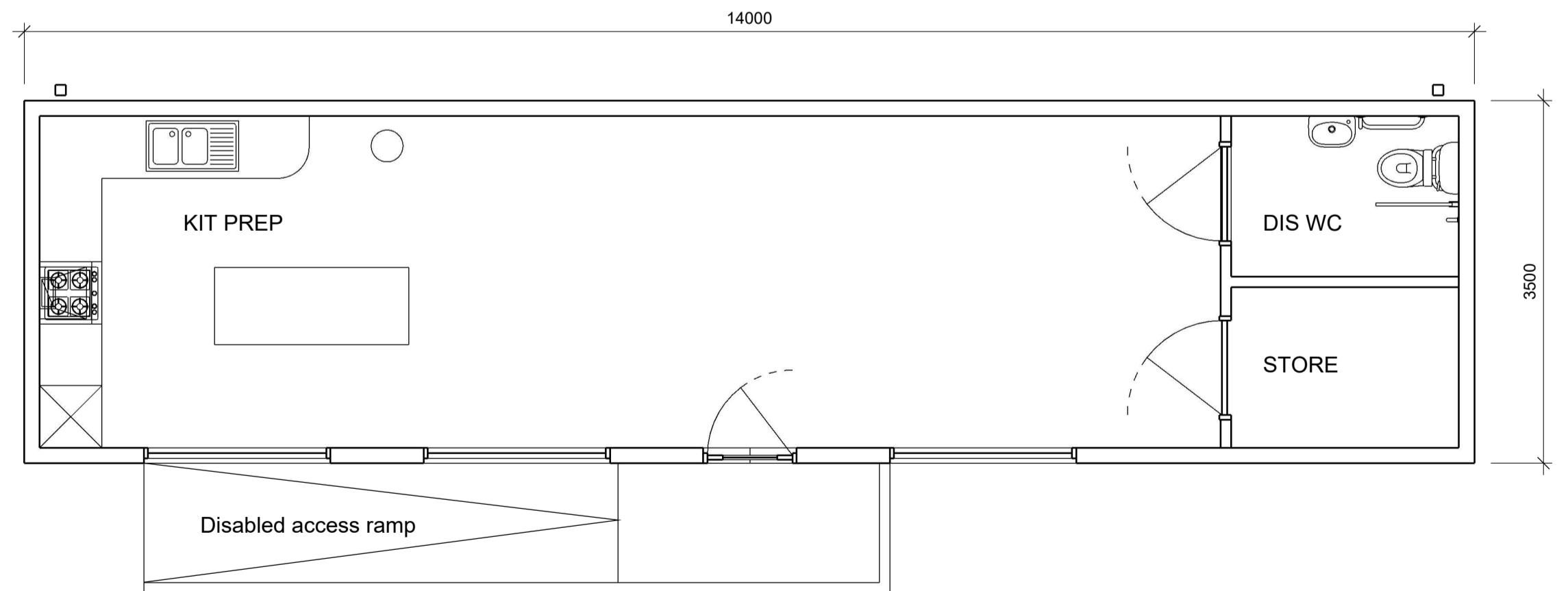
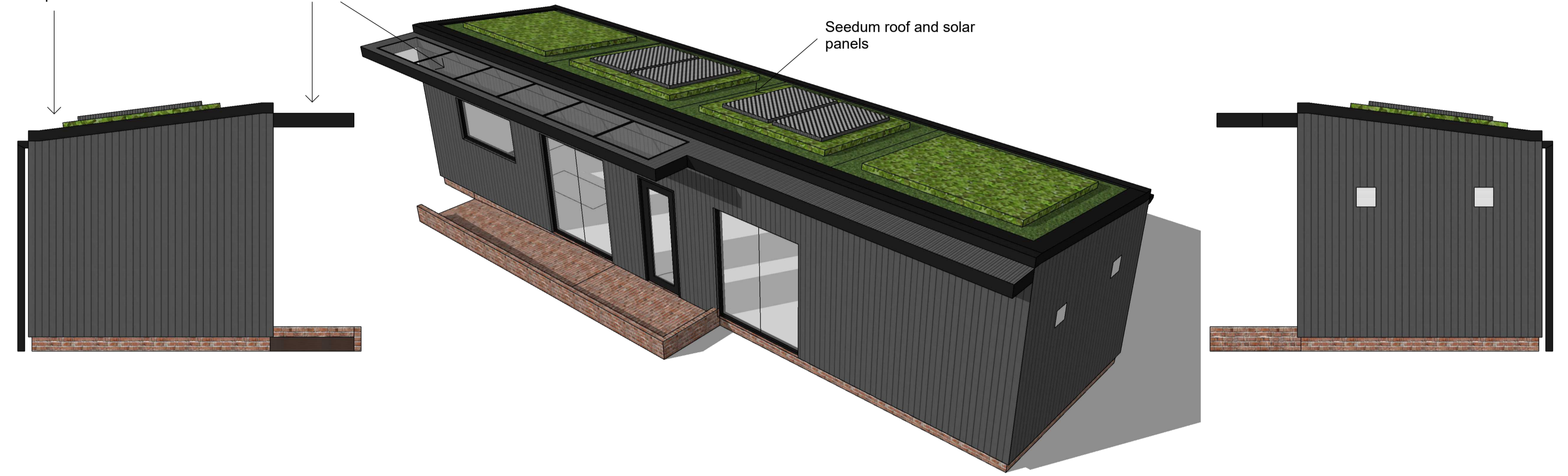


- Black plastisol steel cladding
- Aluminium Crittall double doors.
- Shower, toilet complete with electric towel rail, small sink.
- Kitchen: Microwave, ceramic electric hob, small Belfast sink and fridge
- Separate bedroom area
- Double bed with storage underneath complete with mattress.
- Fully upholstered corner seating area
- Hobbit wood burning stove with heat shield and HETAS approved installation.
- USB plug sockets, internal and external lighting, thermostatic wall heater.
- Oak flooring.
- Solid hardwood kitchen with hardwood worktop
- Solid Oak bathroom door
- Fully Insulated with sheep's wool insulation for all year round use

Monopitch roof with gutter
 and rwp to rear elevation

Part glazed canopy

Seedum roof and solar
 panels



- Prefab garden room style
 classroom building.
- Aluminium Crittall windows
 and doors
- Kitchen food demo area
- Dis WC unisex
- Seedum roof
- Grey water harvesting for WC
- Solar panels
- Black plastisol steel cladding
- Sheeps wool insulation

**PROPOSED BUILDINGS
 THE BOTHY SHEPHERDS HUT AND CLASSROOM
 PLANS AND ELEVATIONS**

**THE BOTHY
 AT HOLME**

REVISIONS

MM/DD/YY	REMARKS
1 191025	PLANNING APPLICATION
2 -- -- --	...
3 -- -- --	...
4 -- -- --	...
5 -- -- --	...