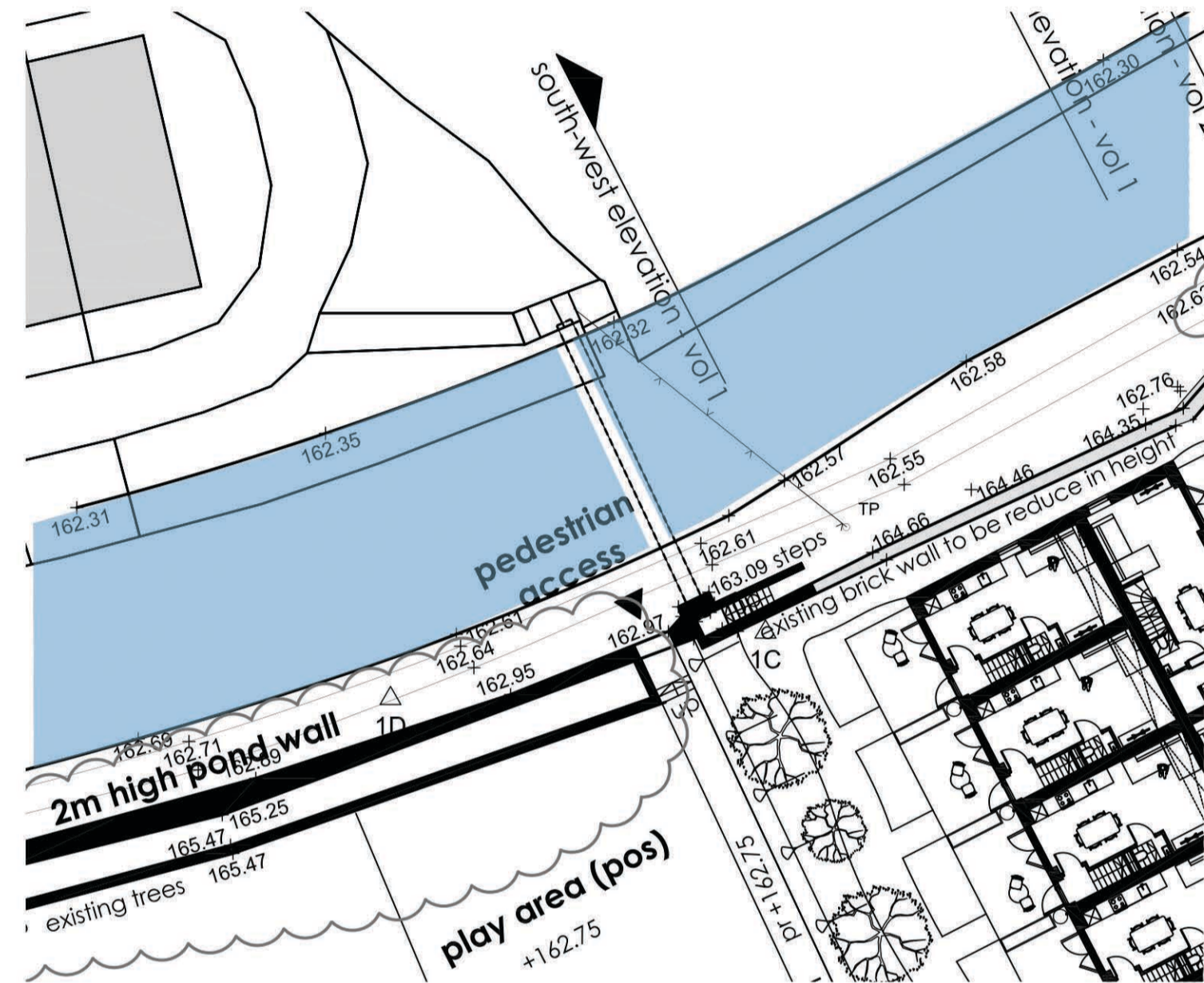


existing plan 1:250 showing site access from towpath



proposed plan 1:250 showing new access from towpath through to site entrance road & new (re-used stone) steps up to existing footbridge



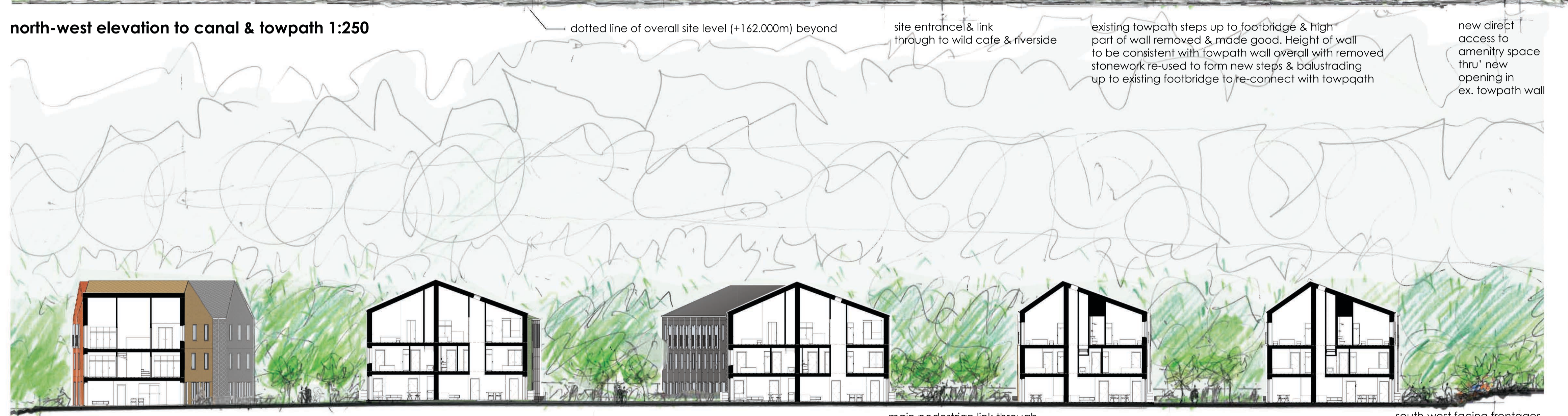
north-west elevation to canal & towpath 1:250

dotted line of overall site level (+162.000m) beyond

site entrance & link through to wild cafe & riverside

existing towpath steps up to footbridge & high part of wall removed & made good. Height of wall to be consistent with towpath wall overall with removed stonework re-used to form new steps & balustrading up to existing footbridge to re-connect with towpath

new direct access to amenity space thru' new opening in ex. towpath wall



north-west site cross-section showing outdoor spaces between buildings 1:250

main pedestrian link through to river & bridge to wild cafe

south-west facing frontages onto amenity space & new pedestrian link from towpath site access road



photos from towpath showing site thresholds, path to existing footbridge, footbridge & views from looking S.W. & N.E.



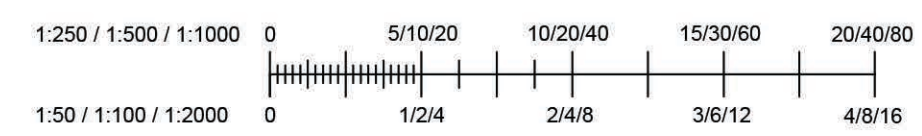
photos from site looking to site access road & entrance & towpath wall



photos to site access road & bridge off manchester road & approach to site entrance & riverside access

proposed footpath

REVISIONS



Drawing Number
MI - CITU - P024
Title
proposed footpath
Scale @ A1 Revised by Rev
1: 250
Drawn Reviewed Sheet Created
SN SM 15/10/25



PLANNING

Marsden Island



T: 0113 320 2355 E: info@citu.co.uk W: www.citu.co.uk