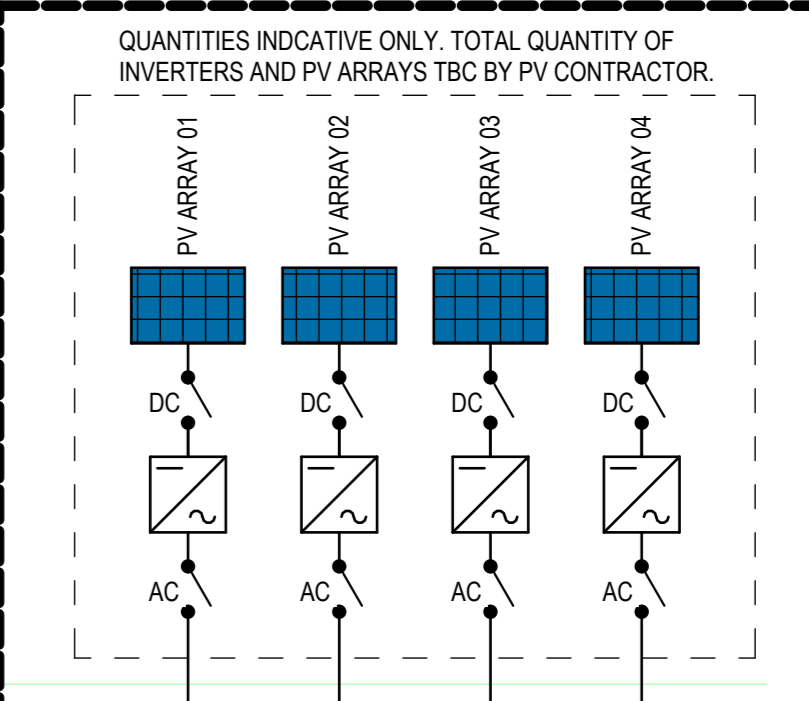
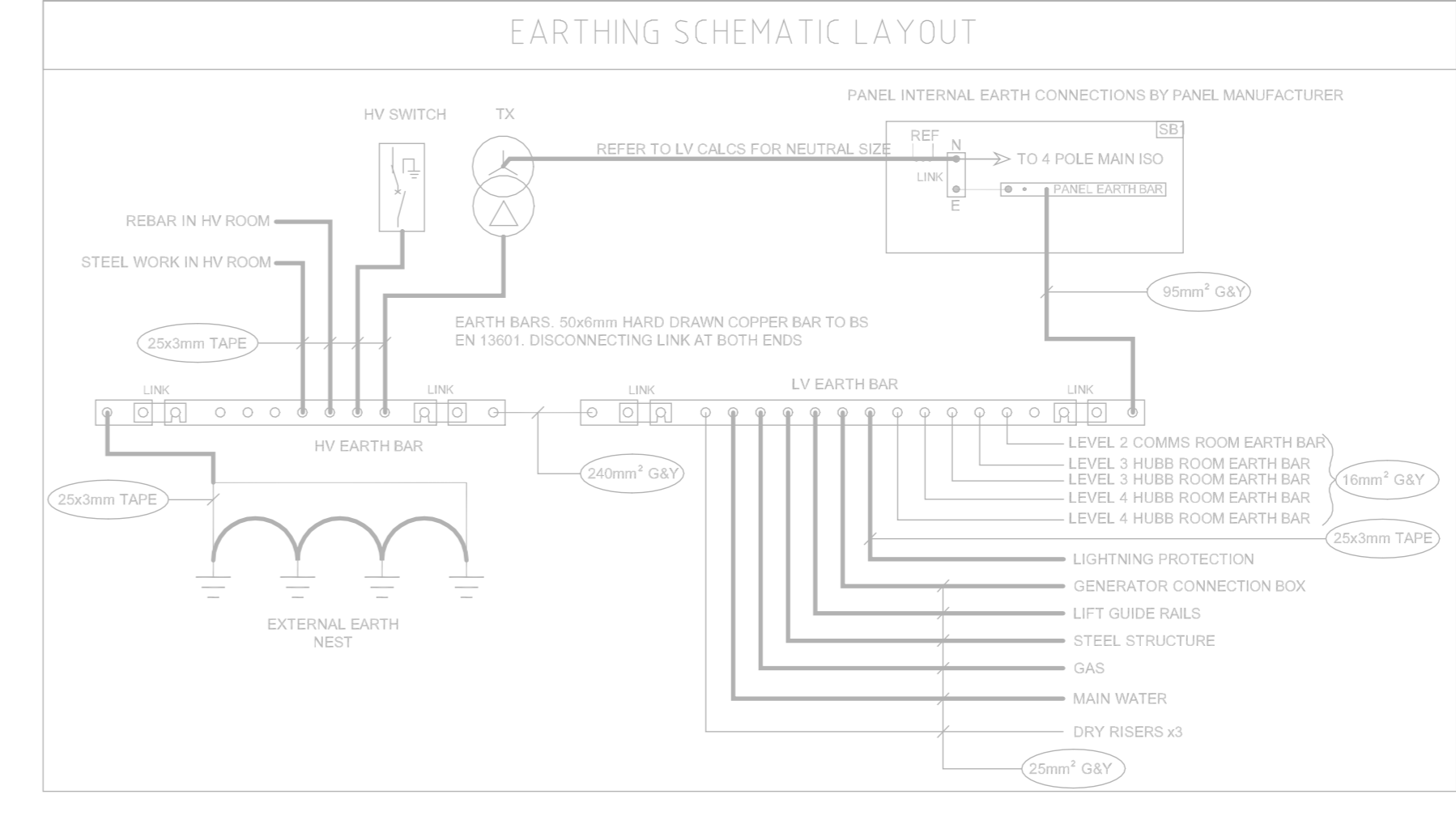
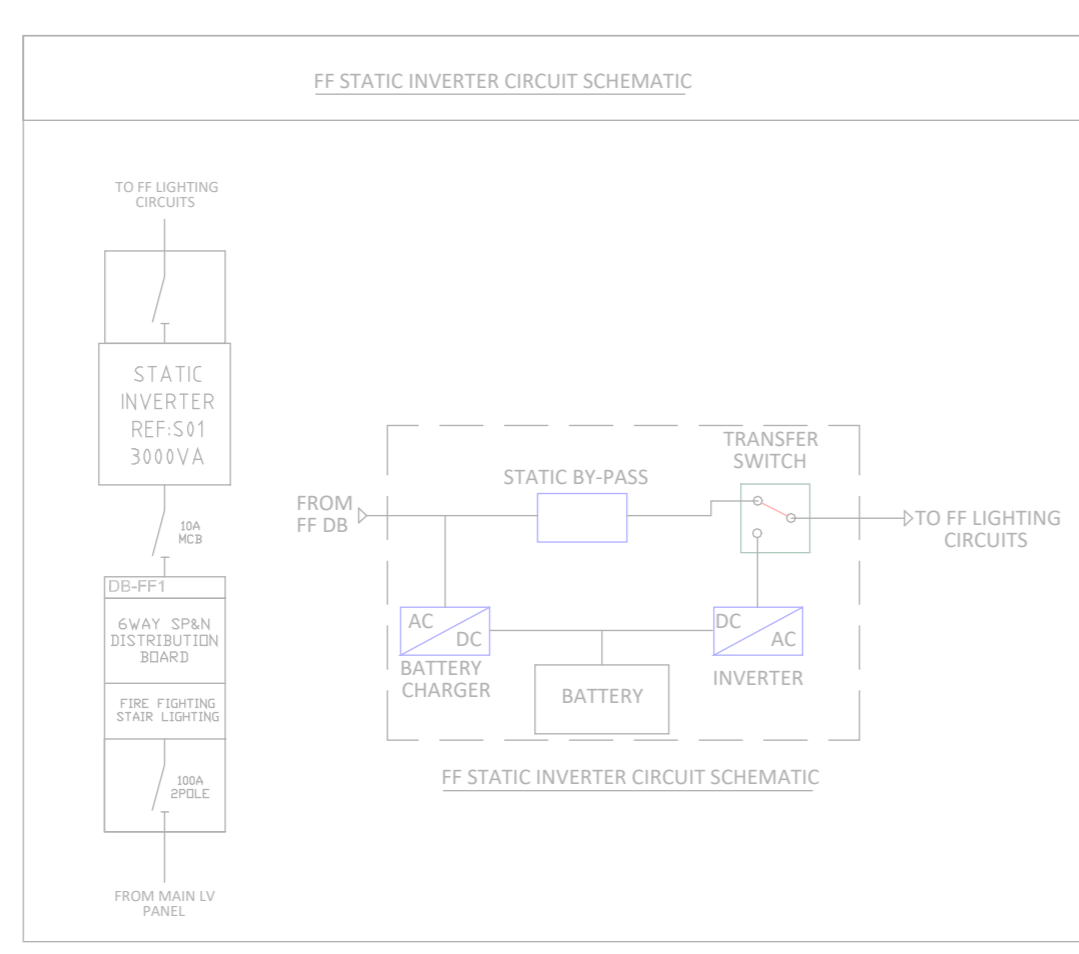
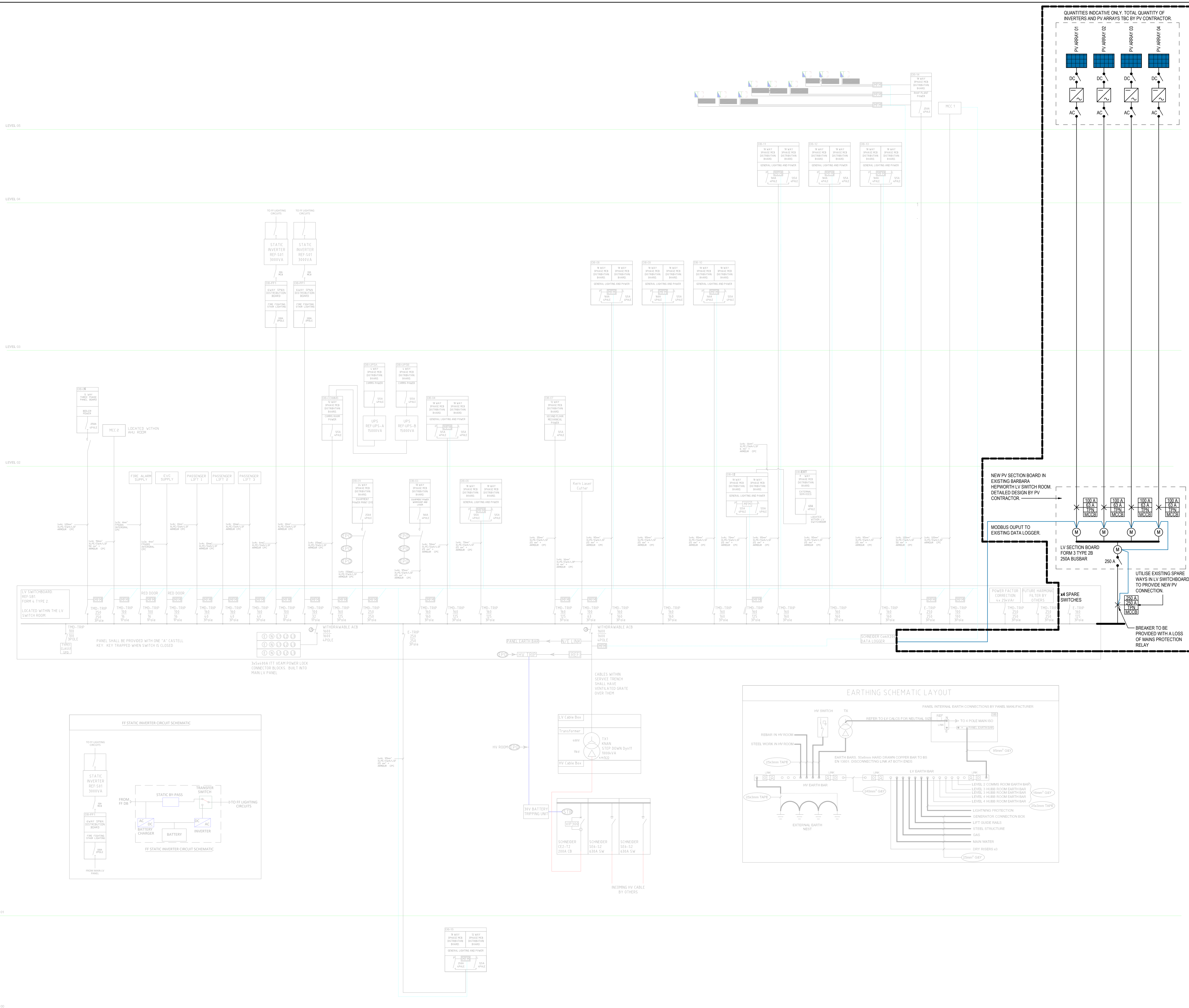


- NOTES
- REFER TO AMTECH REPORT FOR ALL CABLE SIZES AND PROTECTIVE DEVICE SETTINGS
  - ALL MULTI-FUNCTION METERS SHALL BE SERIES LINKED FOR DATA COLLECTION VIA MOD BUS
  - REFER TO DISTRIBUTION BOARD SCHEDULES FOR FINAL CIRCUIT INFORMATION

- TYPE** MULTI-FUNCTION METER INDICATING VOLTS, AMPS, KW, KVA AND POWER FACTOR. C/N MODBUS OUTPUT DUAL INPUT TYPE ON SPLIT BOARDS
- M** INDICATES MOTORIZED DEVICE CONTROLLED BY THE PLC
- TYPE1 (CLASS 500)** SURGE SUPPRESSION DEVICE
- MCB / ACB ISOLATOR (NON-AUTO)**
- MCB / ACB WITH TRIP UNIT**
- BS88 SWITCH FUSE**
- INDICATES ACB / MCCB WITH CASTELL INTERLOCK (trapped when closed unless otherwise stated)**
- ELECTRICAL/MECHANICAL INTERLOCK**
- CONTACTOR**
- RESTRICTED EARTH FAULT RELAY**
- SHUNT TRIP RELAY**
- EARTH ROD**
- EMERGENCY POWER OFF LATCHING BUTTON**

- E-TRIP** TRIP TYPE: Electronic or Thermal Magnetic
- 12S** FRAME SIZE
- 3Pole** TRIP UNIT SIZE
- 20** NUMBER OF POLES



- SAFETY HEALTH AND ENVIRONMENTAL INFORMATION**
- CONSTRUCTION**
- MAINTENANCE/OPERATION**
- DECOMMISSION/DEMOLITION**
- Notes**
- STANDARD NOTES**
- THIS DRAWING IS TO BE READ IN CONJUNCTION WITH ALL OTHER DISCIPLINES, DRAWINGS, SCHEDULES AND SPECIFICATIONS. LEGENDS AND STANDARD DETAILS.
  - THIS DRAWING IS COPYRIGHT AND SHALL NOT BE REPRODUCED WITHOUT PERMISSION.
  - DIMENSIONS GOVERN ON ALL DRAWINGS AND DETAILS SHOULD ANY DISCREPANCIES BE FOUND WITH THIS DRAWING AND ANY ASSOCIATED DRAWINGS OR SPECIFICATIONS THIS SHOULD BE BROUGHT TO THE ATTENTION OF THE M&E BUILDING SERVICES CONSULTANT IMMEDIATELY.
  - UNLESS OTHERWISE STATED ALL DIMENSIONS ARE IN MILLIMETRES.
  - DO NOT SCALE FROM THIS DRAWING.
  - DIMENSIONS TO BE CHECKED ON SITE BEFORE ANY WORK IS PUT IN HAND OR PREFABRICATED.
  - THIS DRAWING SHOULD ONLY BE USED FOR THE SPECIFIC SERVICES INTENDED.
  - THIS DRAWING SHOWS THE DESIGN INTENT ONLY. THE CONTRACTOR SHALL BE RESPONSIBLE FOR THE FULL CO-ORDINATION OF THE SERVICES INDICATED ON THIS AND ALL OTHER SERVICES DRAWINGS.
  - FINAL ACCESS AND SETTING OUT OF SERVICES SHALL BE AGREED BETWEEN THE ARCHITECT AND THE CONTRACTOR.
  - THE PROJECT NOTES ARE TO BE READ IN CONJUNCTION WITH ALL RELEVANT TECHNICAL SPECIFICATIONS.
  - WHERE ELECTRICAL SERVICES PASS THROUGH FIRE COMPARTMENTATION GELING VOIDS, FLOOR VOIDS AND STRUCTURAL WALLS THE CONTRACTOR SHALL SLEEVE/SAL THE OPENING WITH AN ACOUSTIC AND FIRE SEALANT APPROVED BY THE ARCHITECT.
  - THE CONTRACTOR SHALL REFER TO THE ARCHITECT'S DRAWINGS FOR DETAILS OF FIRE COMPARTMENTATION.

- DRAWING NOTES**
- REFER TO UOH RECORD DRAWING G071-GEN-ZZ-KX-OR-E-03-AF3 PRODUCED BY GENEC FOR THE EXISTING HV/LV SINGLE LINE DIAGRAM
  - THIS DRAWING IS A MARKUP OF AN ORIGINAL DRAWING PROVIDED BY THE UNIVERSITY OF HUDDERSFIELD. BURO HAPPOLD TAKES NO RESPONSIBILITY FOR THE ACCURACY OF THE ORIGINAL DRAWING INCLUDING ITEMS OUTSIDE THE 'BURO HAPPOLD PROPOSED MODIFICATIONS' SCOPE BOUNDARY.
  - QUANTITIES AND SIZES OF PV ARRAYS, INVERTERS AND CIRCUITS TO BE DEVELOPED BY THE CONTRACTOR AS PART OF STAGE 4.
  - CIRCUIT PROTECTION DEVICE TYPES AND SIZES TO BE DEVELOPED BY THE CONTRACTOR AS PART OF STAGE 4.

- BURO HAPPOLD LEGEND**
- BURO HAPPOLD PROPOSED MODIFICATIONS
  - PV ARRAY (QUANTITY OF PANELS NOT INDICATED)
  - CURRENT INVERTER & POWER CONDITIONING UNIT
  - ISOLATOR
  - UOH CHECK METER
  - MODBUS OUTPUT
  - NEW LV SUBMAIN CABLE
  - BUSBAR
  - NEW METERING COLLECTION GATEWAY
  - SECURE FILE TRANSFER PROTOCOL
- CIRCUIT PROTECTION DEVICE**
- FRAME RATING
  - OVERCURRENT TRIP SETTING
  - 3PN: THREE PHASE & NEUTRAL
  - SPN: SINGLE PHASE & NEUTRAL
  - ACB: AIR CIRCUIT BREAKER
  - MCCB: MOULDED CASE CIRCUIT BREAKER
  - VCB: VACUUM CIRCUIT BREAKER
  - NA: NON-AUTOMATIC

Rev	Description	Date	By	Appr
001	Issue 1	03/10/2024	ZA	PD
002	Issue 2	01/11/2024	ZA	PD

**STAGE 3**

Project Stage

**S2 - FOR INFORMATION**

State of Drawing

**BURO HAPPOLD**

The Featherstone Building  
66 City Road  
London, EC1Y 2DL  
UK

Tel: +44 (0)20 79 29 900  
Fax: +44 (0)20 78 14 145  
Email: [info@burohappold.com](mailto:info@burohappold.com)  
Web: [www.burohappold.com](http://www.burohappold.com)

Client: University of Huddersfield  
Contract: N/A  
Project: **UOH Solar PV**  
Prog Title: Barbara Hepworth Electrical Schematic Proposed PV Connection Principle

Job No: 000000  
Scale: A0  
Sheet No: 1 of 1

Drawn By: AD  
Checked By: ZA  
Approved By: PD

Drawing No: UOH-BHE-BH-ZZ-DR-E-2100  
Revision: P02