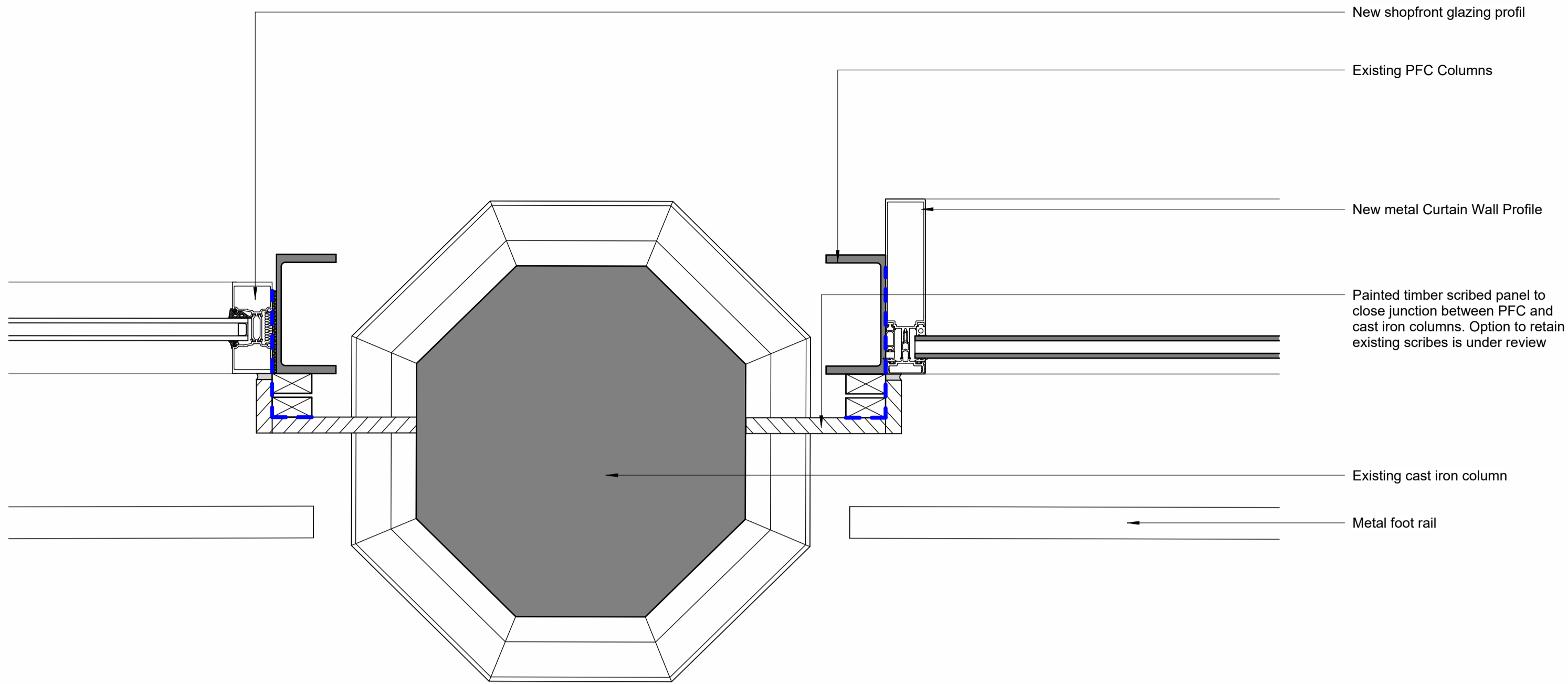
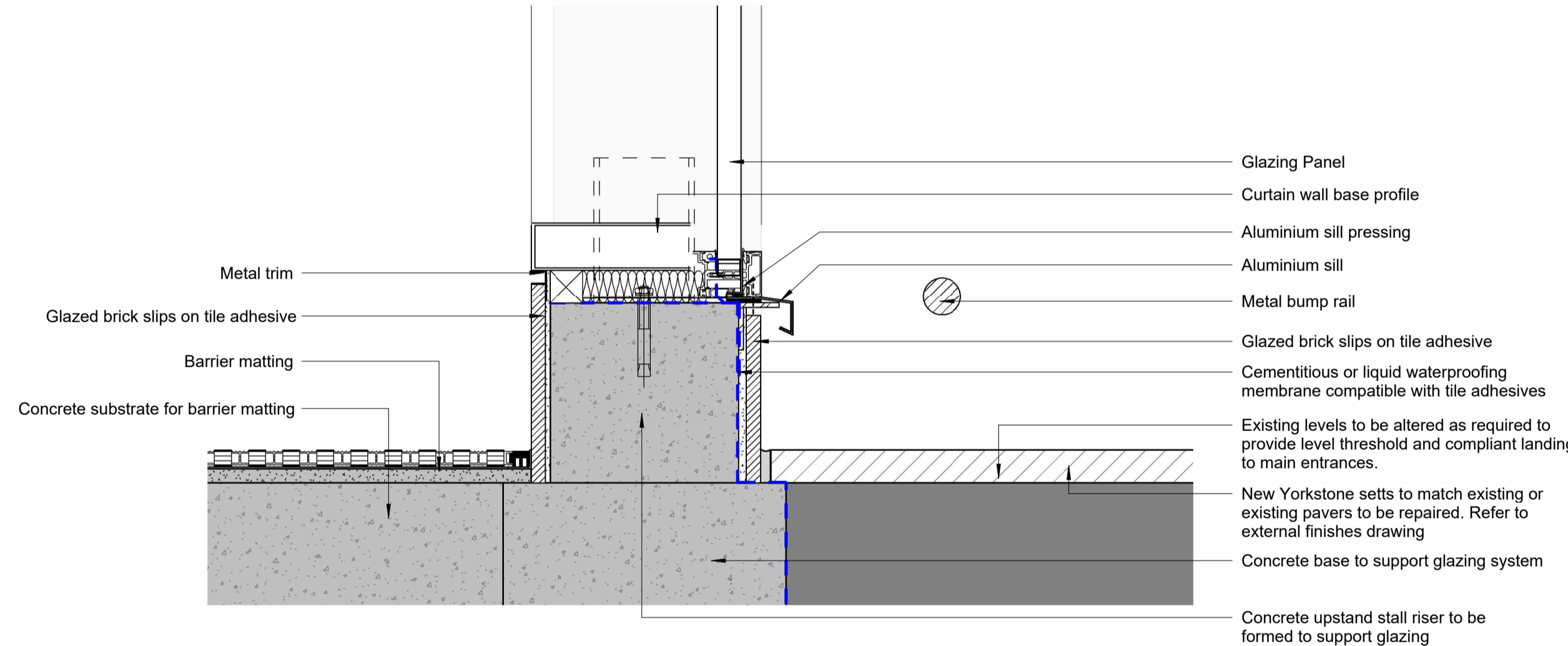


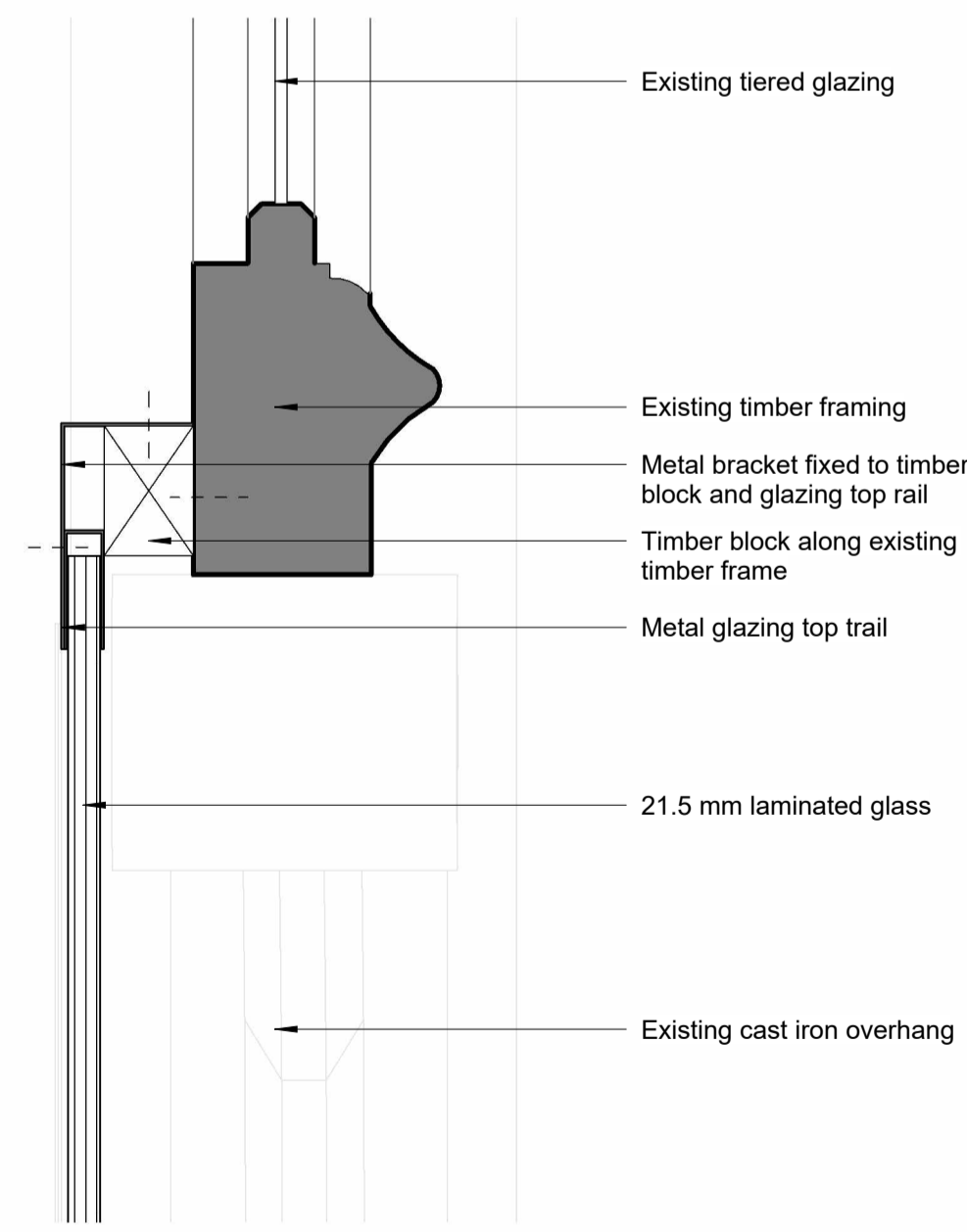
2 Typical Curtain Wall Section Details
1:5



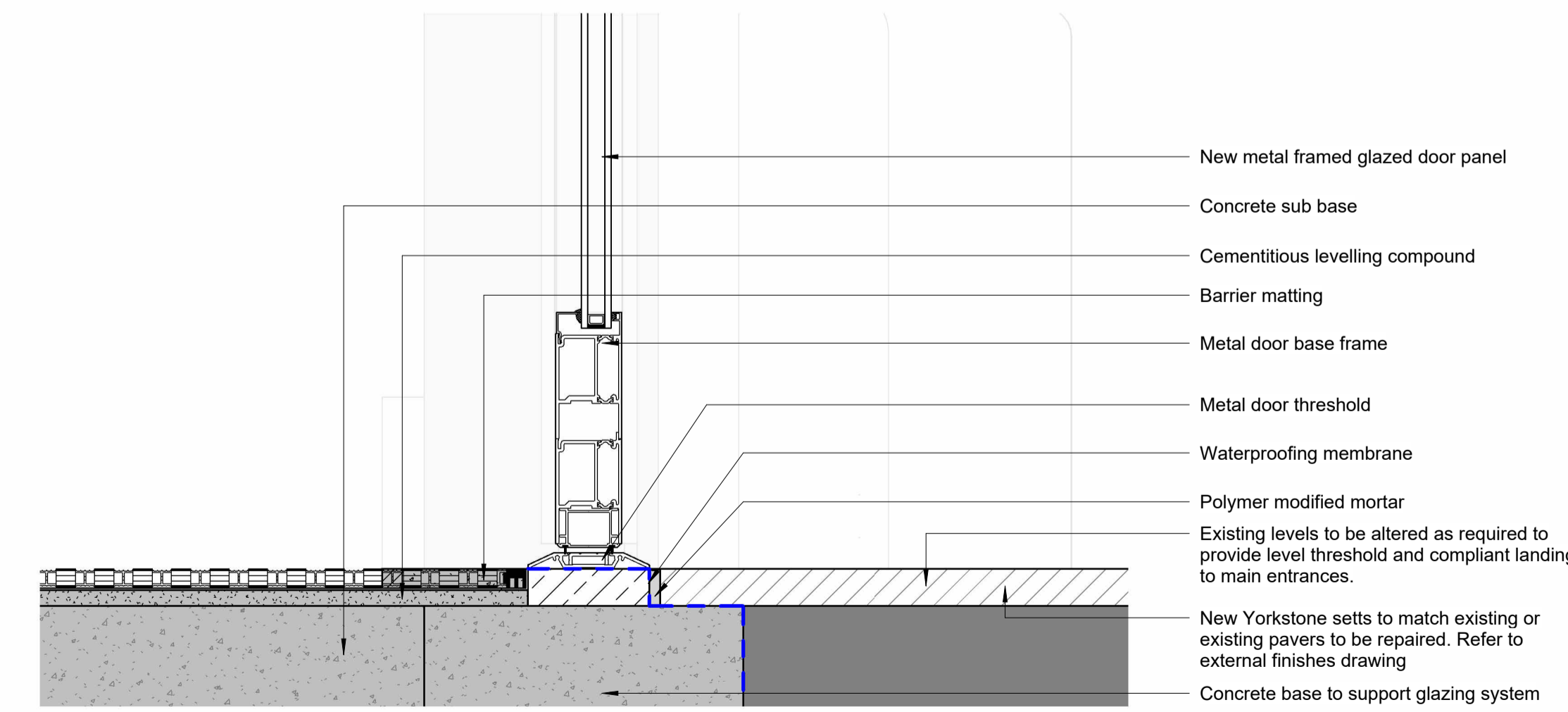
1 Typical Curtain Wall Jamb Detail
1:5



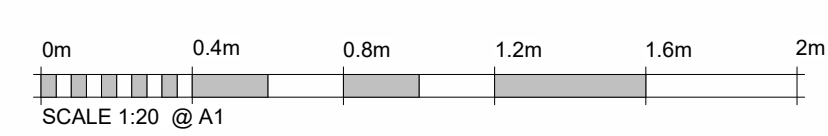
5 Typical Curtain Wall Base Detail
1:5



3 Typical High Level Glazing Head Detail
1:5



4 Typical Curtain Wall Door Base Detail
1:5



Do not remove this panel from this drawing. Do not scale from this drawing. All dimensions and levels are to be checked on site. All discrepancies, errors and omissions must be reported immediately to Greig and Stephenson Ltd. The contractor is responsible for setting out, checking and confirming all site conditions prior to fabrication and construction. All building and fabrication works are to be carried out in accordance with the Local and National Building Codes, practices and standards. This drawing is copyright and must not be reproduced without the written consent of Greig and Stephenson Ltd. Greig and Stephenson Ltd. accept no responsibility for any loss or expenses arising from use of this drawing for any purpose other than those agreed in writing by Greig and Stephenson Ltd. This drawing is not to be used by any third party without the written consent of Greig and Stephenson Ltd.

REV	DATE	COMMENT	DRW	APRV
P01	28/08/25	Issued for Planning	CS/SS	NM

Greig & Stephenson Architects

Studio SW.201, Screenworks
22 Highbury Grove
London, N5 2ER
tel. 020 7403 5511
fax. 020 7403 5544
email. info@gands.co.uk

CLIENT KIRKLEES COUNCIL

PROJECT HUDDERSFIELD MARKET

STATUS S3 - FOR REVIEW AND COMMENTS

DRAWING External Façade Interface Typical Curtain Wall System Sheet 2

SCALE	DRW	CHKD	RVW	APRV	DATE
1:5 @ A1	SS		SS		10/03/25
	NM		NM		

DRAWING NUMBER	REVISION
HMH-GSA-MH-XX-D-A-7103	P01