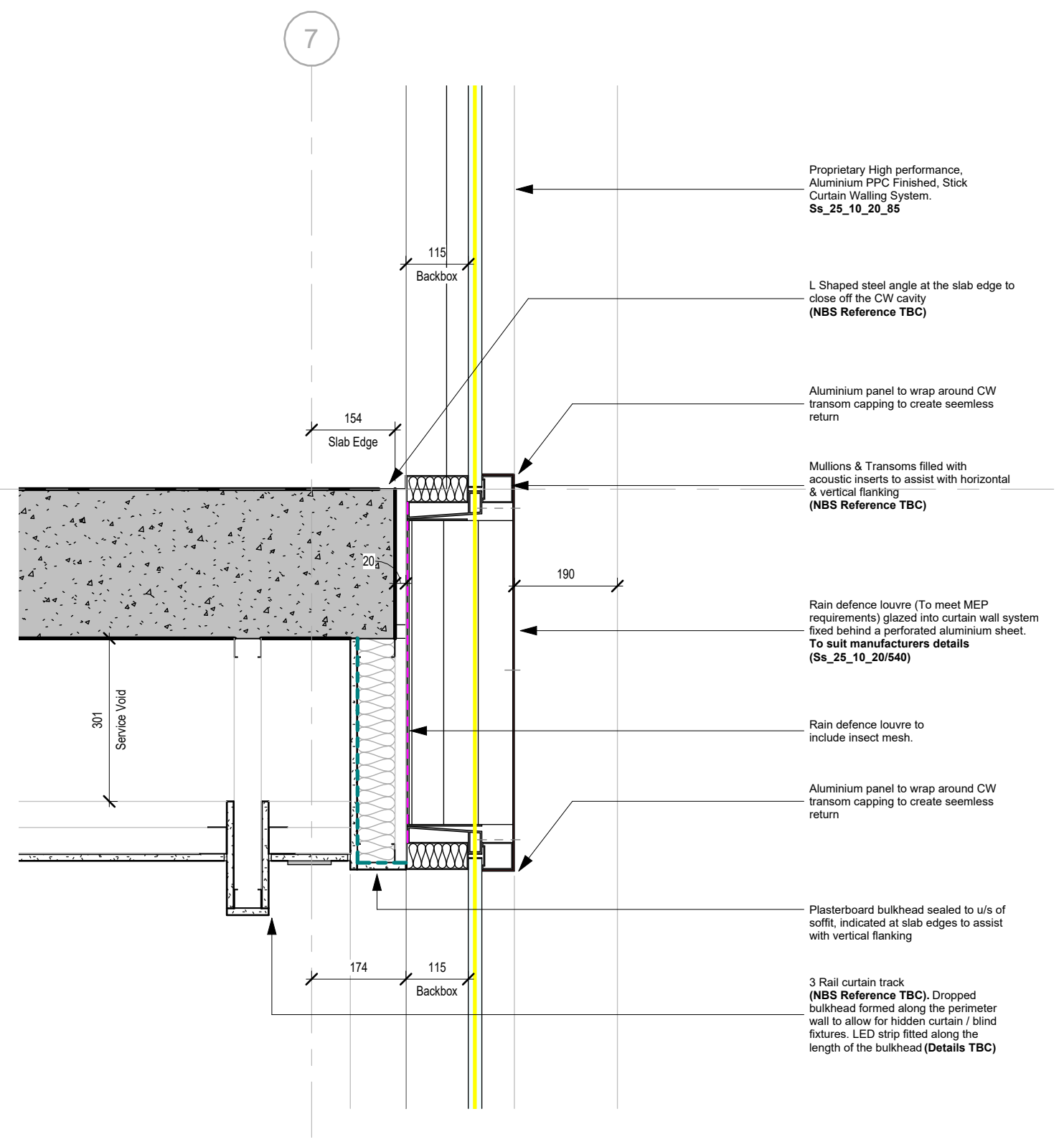


F External Wall Typical Section Detail F
1 : 10



G External Wall Typical Section Detail G
1 : 10

U-Value & Air Tightness Targets

Target U-Values (Subject to MEP Engineer thermal model verification)

External Walls - 0.2 W/m²K

Floors - 0.16 W/m²K

Roofs - 0.13 W/m²K


Windows & Roof Windows - 1.6 W/m²K

Rooflights - 2.2 W/m²K

External Doors - 1.6 W/m²K

G-Value for Glazing - MEP Engineer to confirm






Air-permeability

Proposed Air-Tight Line 




The minimum air-tightness is 8 m³/(h.m²) at 50 Pa

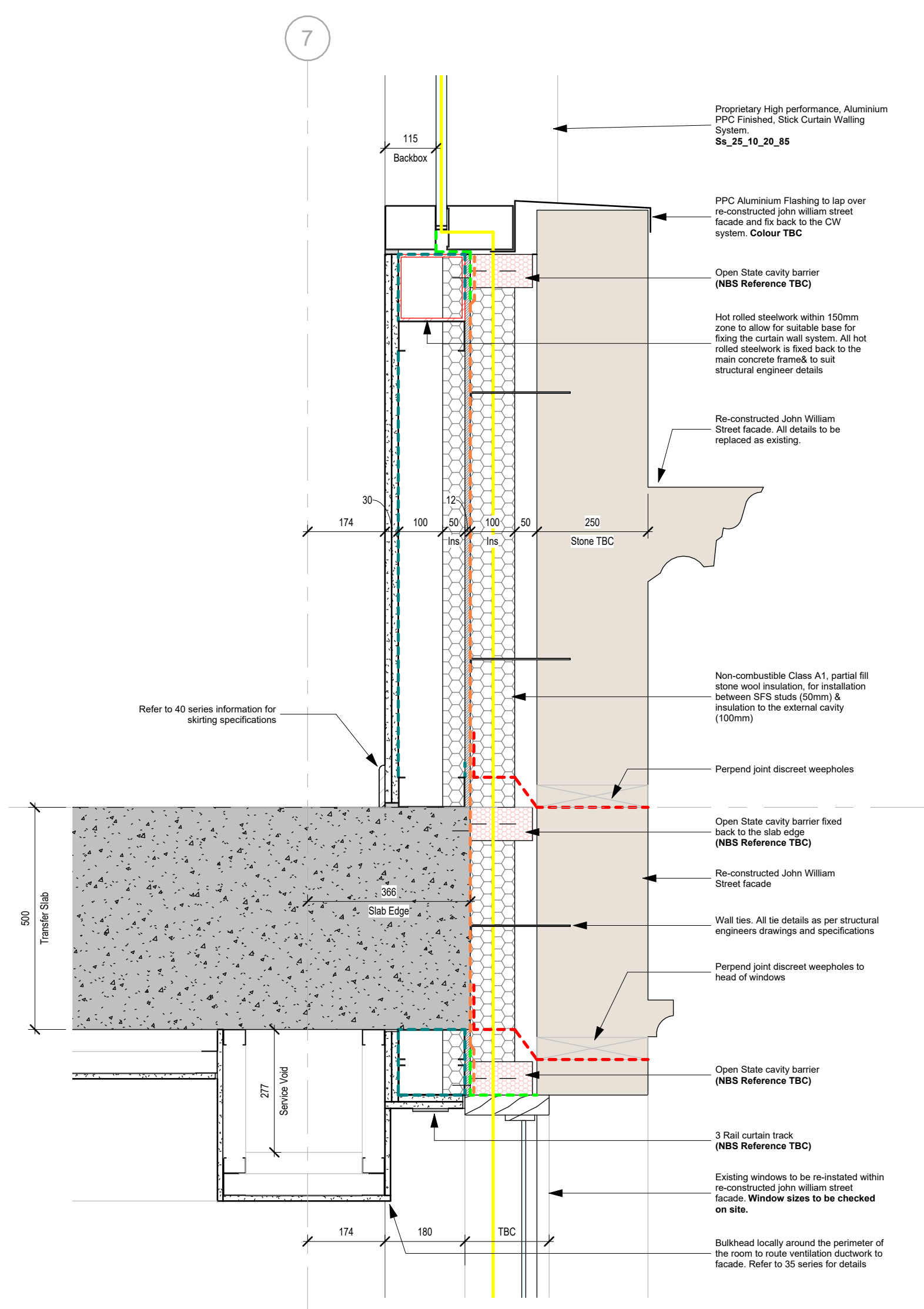
Detail Line Types

External Wall

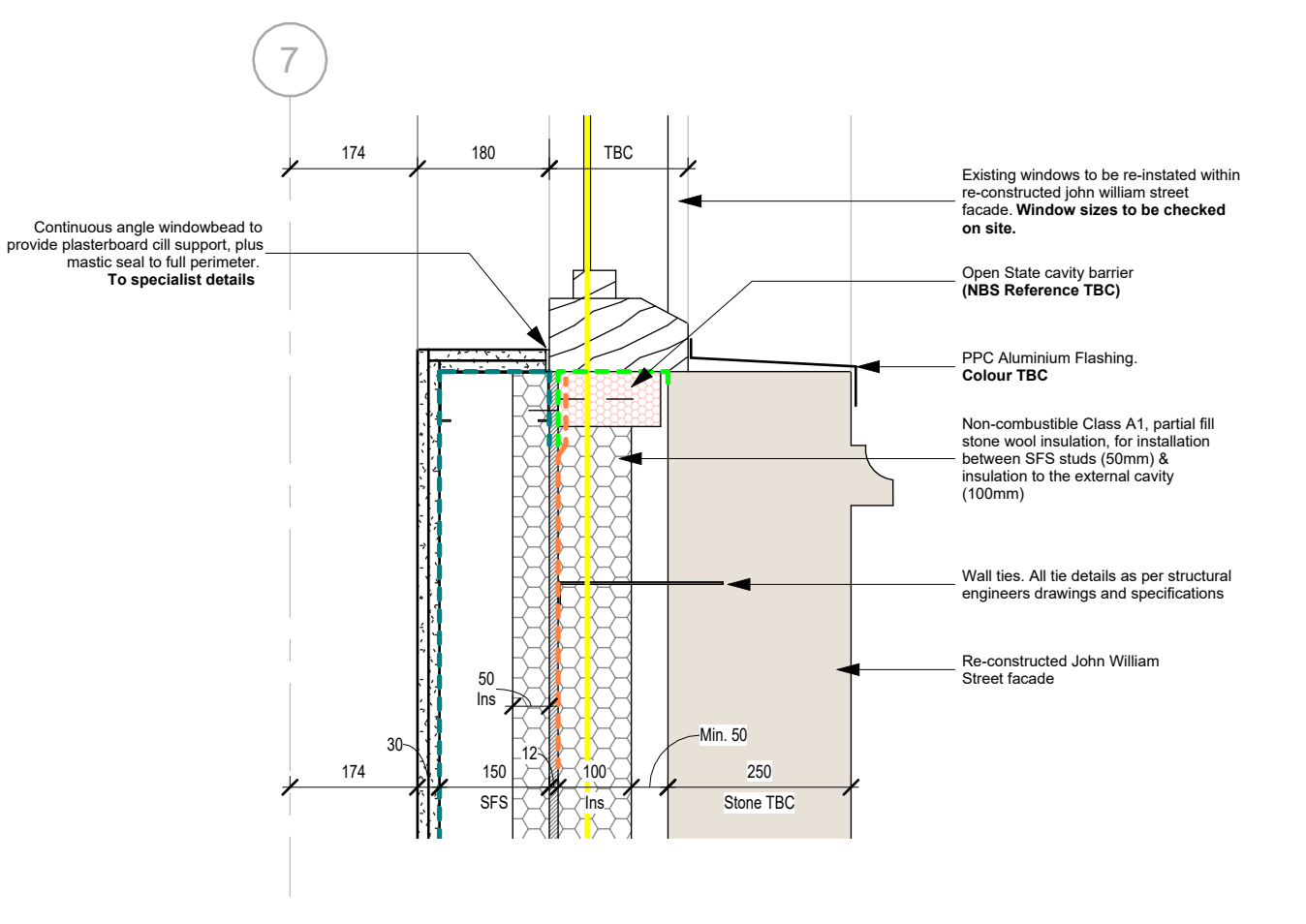
-  Breather Membrane
-  Wall VCL
-  EPDM
-  Self Adhesive Membrane
-  Vertical DPC

Roof

-  Existing Roof Material
-  Roof Membrane
-  Hot Melt System



H External Wall Typical Section Detail H
1 : 10



I External Wall Typical Section Detail I
1 : 10

P1	Issued to LPA.	25.06.2025	MCS	GS
Rev	Description	Date	Dr	App
original by	DR	05/21/25	MS	MS

AHR Architects Ltd
No 1 Aire Street
Leeds
LS1 4PR
United Kingdom

T +44(0)113 3858787
E leads@ahr.co.uk
www.ahr.co.uk

GMI

Kirklees
COUNCIL

client name	GMI Construction Group		
project	George Hotel Refurbishment		
drawing	External Wall Typical Section Details - Sheet 2		
computer file	110.32.1.110\DEM_Profile_Folder_nbs\mstrim\stephen\Documents\Rev		plot date
drawing number	2024.00373.000		scale
L054-AHR-21-ZZ-D-A-21202	As indicated@A1		issue status
	rev	P1	S0

This drawing is to be read in conjunction with all related drawings. All dimensions must be checked and verified on site before commencing any work or producing shop drawings. The originator should be notified immediately of any discrepancy. This drawing is copyright and remains the property of AHR.