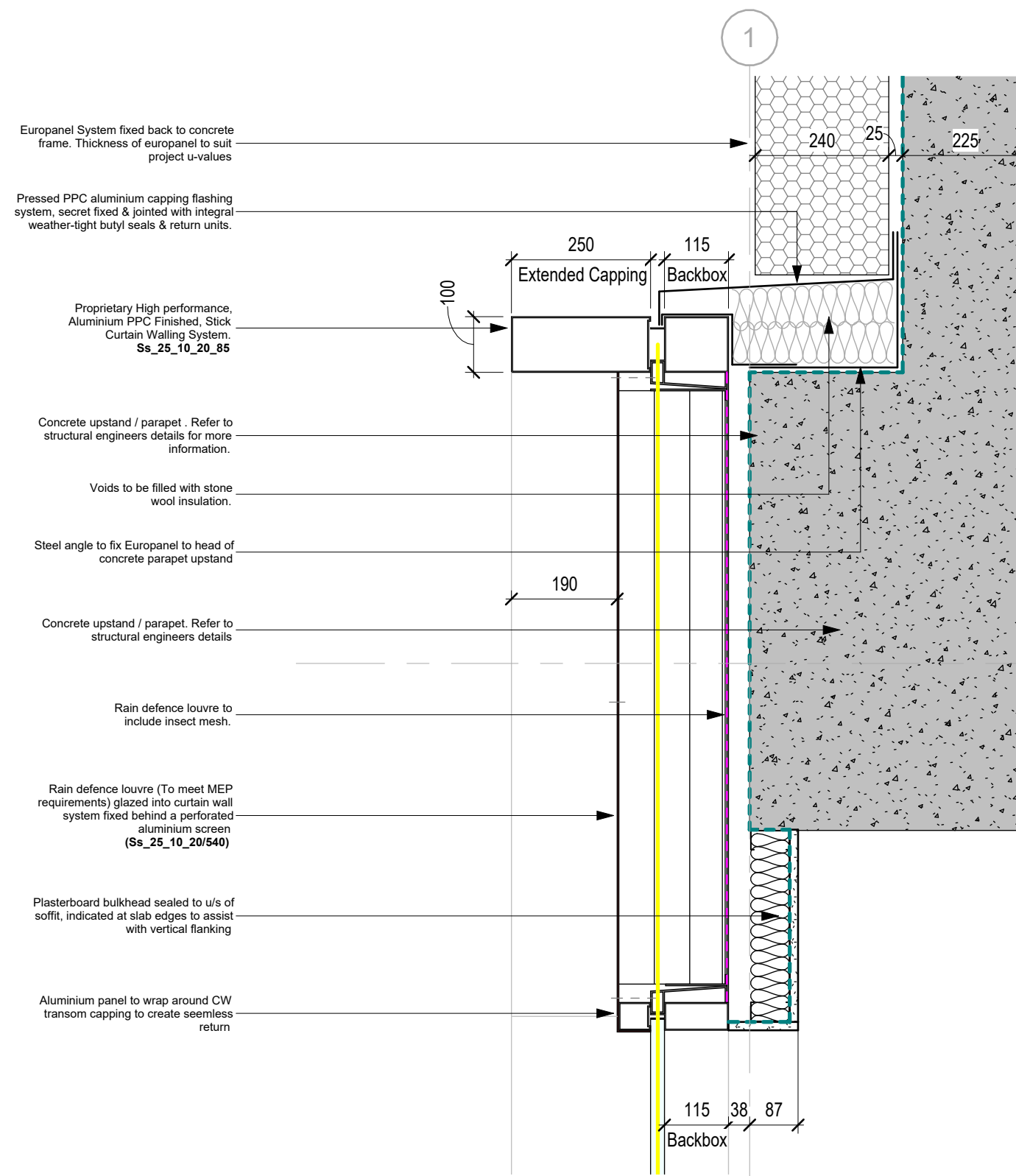
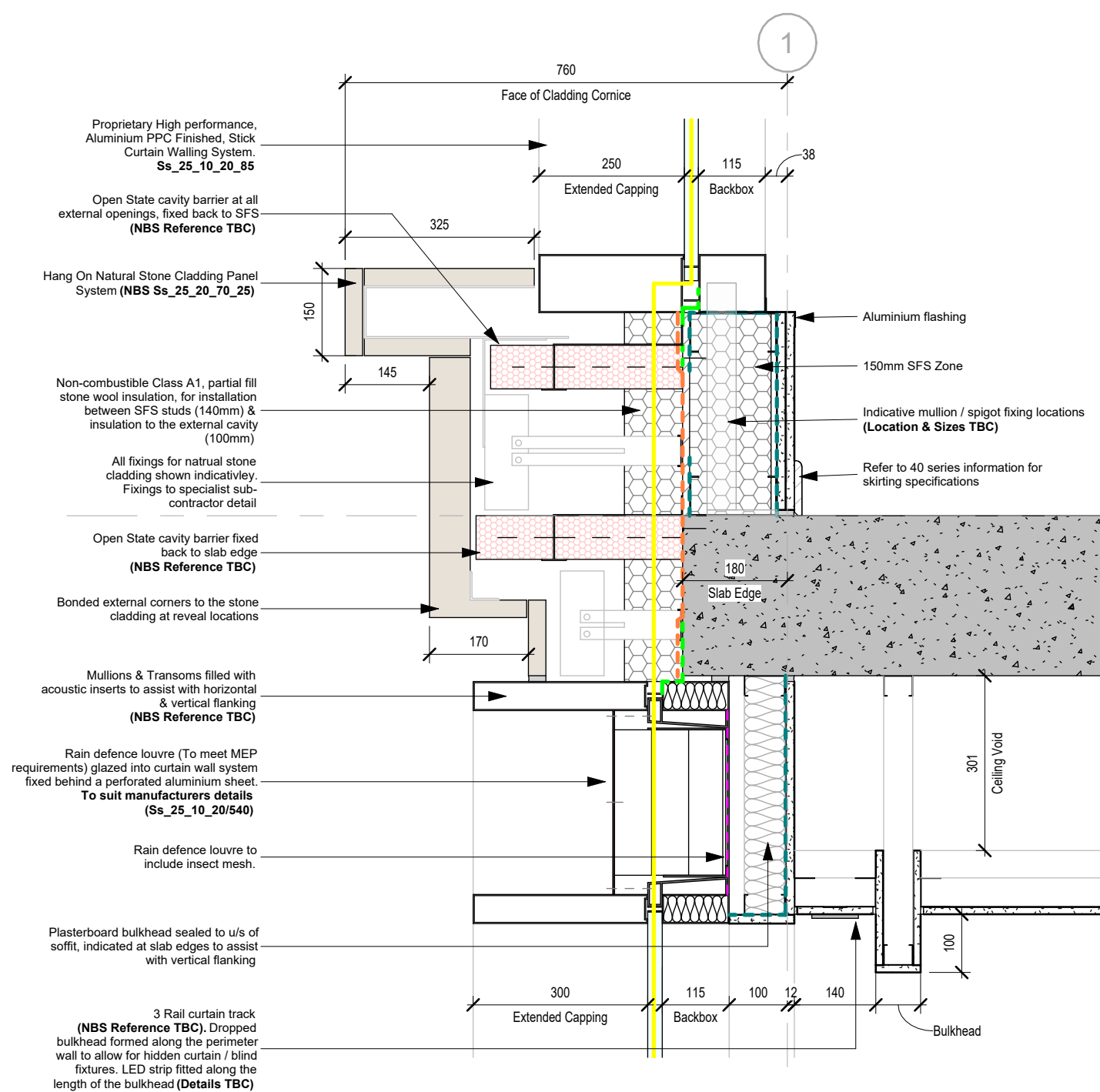


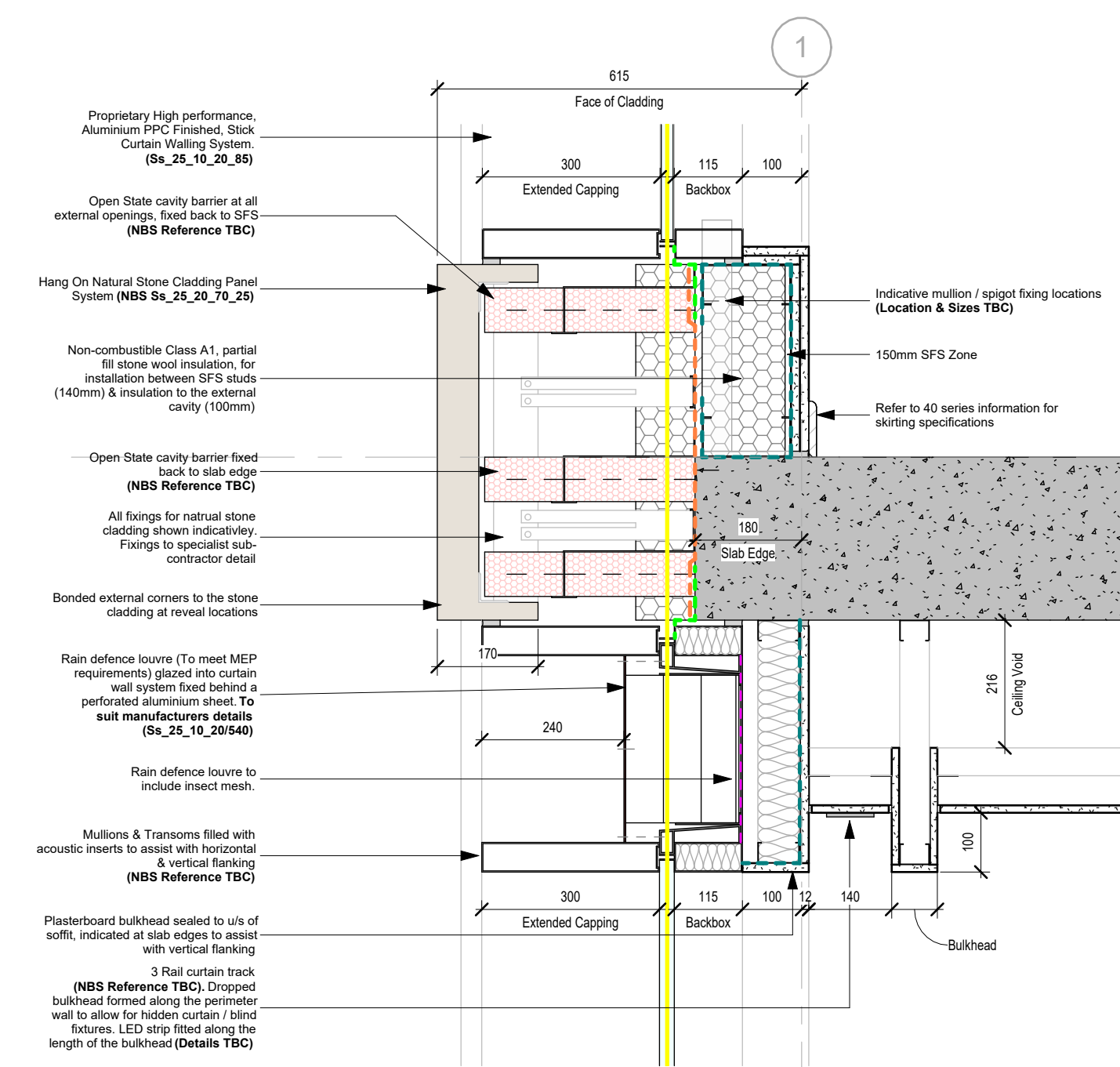
A External Wall Typical Section Detail A
1 : 10



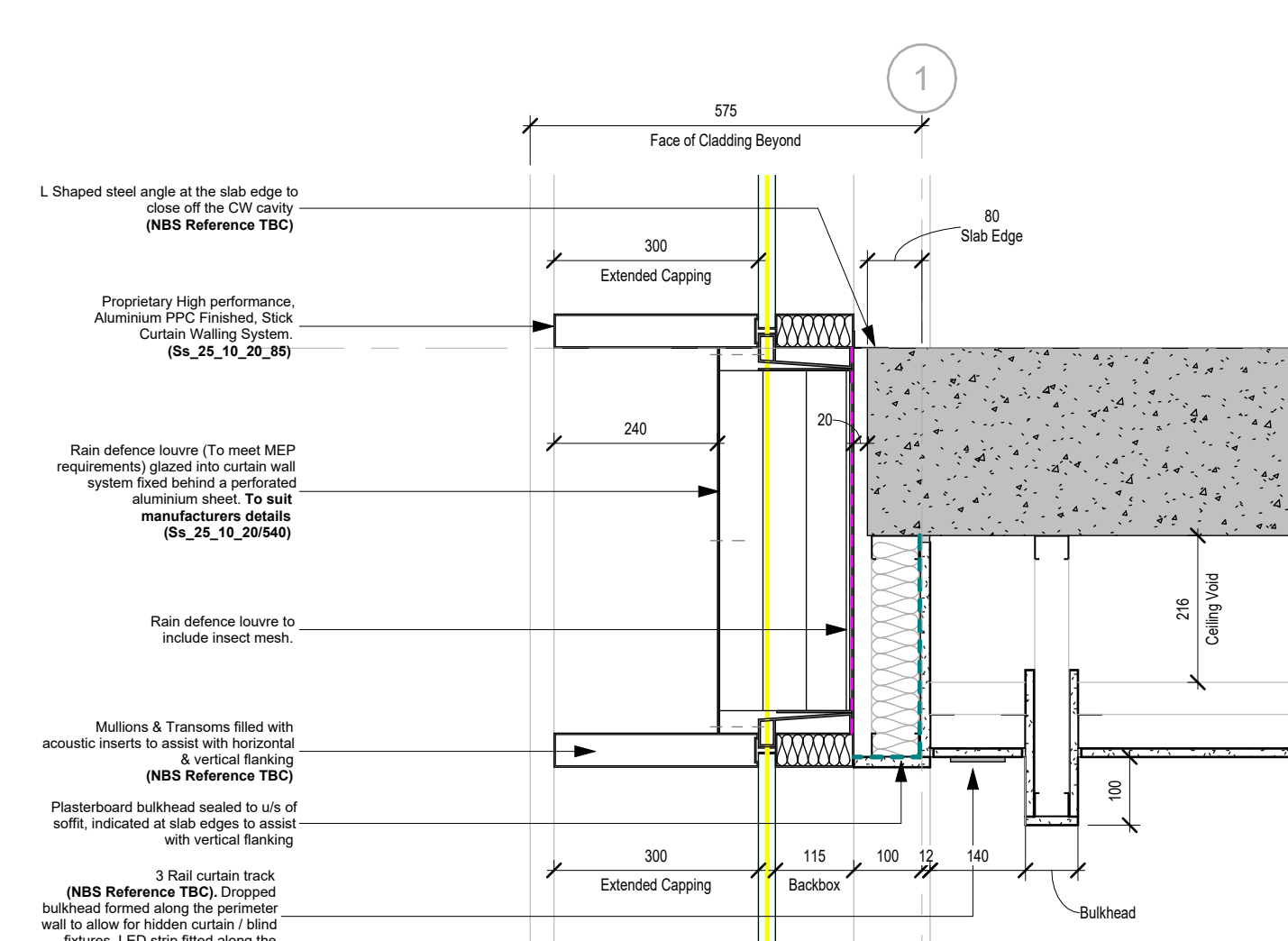
E External Wall Typical Section Detail E
1 : 10



B External Wall Typical Section Detail B
1 : 10



C External Wall Typical Section Detail C
1 : 10



D External Wall Typical Section Detail D
1 : 10

U-Value & Air Tightness Targets

Target U-Values (Subject to MEP Engineer thermal model verification)

External Walls - 0.2 W/m²K
 Floors - 0.16 W/m²K
 Roofs - 0.13 W/m²K
 Windows & Roof Windows - 1.6 W/m²K
 Rooflights - 2.2 W/m²K
 External Doors - 1.6 W/m²K

G-Value for Glazing - MEP Engineer to confirm

Air-permeability

Proposed Air-Tight Line _____
 The minimum air-tightness is 8 m³/(h.m²) at 50 Pa

Detail Line Types

External Wall

- Breather Membrane
- Wall VCL
- EPDM
- Self Adhesive Membrane
- Vertical DPC

Roof

- Existing Roof Material
- Roof Membrane
- Hot Melt System

Rev	Description	Date	Dr	App	GS
P1	Issued to LPA.	25.06.2025	MCS	GS	
DR	original by	05/21/25	date created	approved by	MS

AHR Architects Ltd
 No. 1 Aire Street
 Leeds
 LS1 4PR
 United Kingdom

GMI T +44 (0)113 3858787
 E leeds@ahr.co.uk
 www.ahr.co.uk

Kirklees COUNCIL

client name	GMI Construction Group		
project	George Hotel Refurbishment		
drawing	External Wall Typical Section Details - Sheet 1		
computer file	110.32.1.110\DEM_Profiles_Folder_nbs\external\stephen\Documents\Rev	plot date	
project number	2024.00373.000	scale	As indicated@A1
drawing number	L054-AHR-21-ZZ-ZZ-D-A-21201	rev	P1
		issue status	S0

This drawing is to be read in conjunction with all related drawings. All dimensions must be checked and verified on site before commencing any work or producing shop drawings. The originator should be notified immediately of any discrepancy. This drawing is copyright and remains the property of AHR.