

Advice : HSL-250429162515-243 DO NOT ADVISE AGAINST

Your Ref: 2025/90320

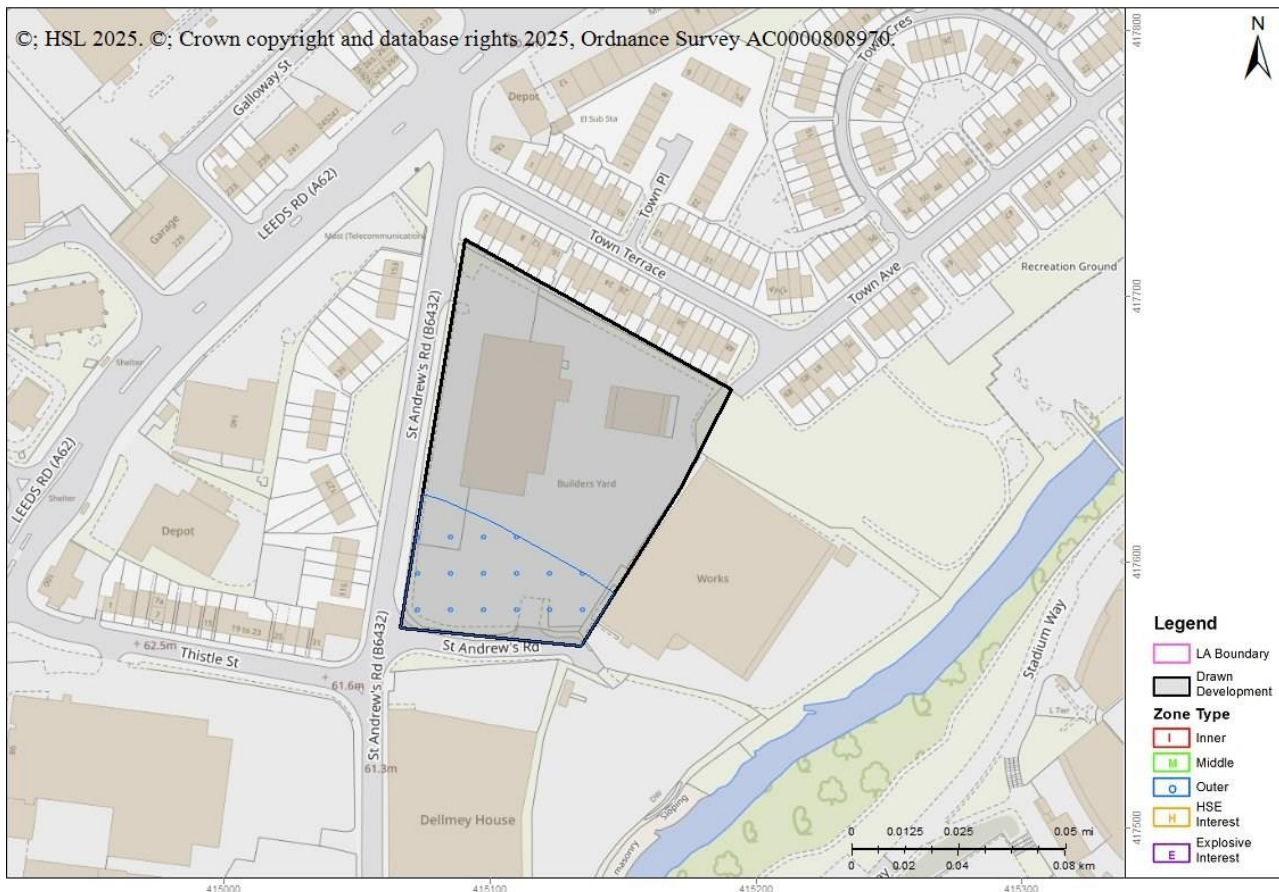
Development Name: Jewson Property And Services Division, St Andrew's Road, Huddersfield, HD1 6PX

Comments: Erection of extension to existing warehouse; demolition of warehouse entrance canopy and southern section of existing warehouse; demolition of existing timber storage area and erection of covered external racking area and associated works

Land Use Planning Consultation with Health and Safety Executive [Town and Country Planning (Development Management Procedure) (England) Order 2015, Town and Country Planning (Development Management Procedure) (Wales) Order 2012, or Town and Country Planning (Development Management Procedure) (Scotland) Regulations 2013]

The Health and Safety Executive (HSE) is a statutory consultee for certain developments within the Consultation Distance of Major Hazard Sites/ pipelines. This consultation, which is for such a development and is within at least one Consultation Distance, has been considered using HSE's planning advice web app, based on the details input on behalf of Kirklees District (B).

HSE's Advice: Do Not Advise Against, consequently, HSE does not advise, on safety grounds, against the granting of planning permission in this case.

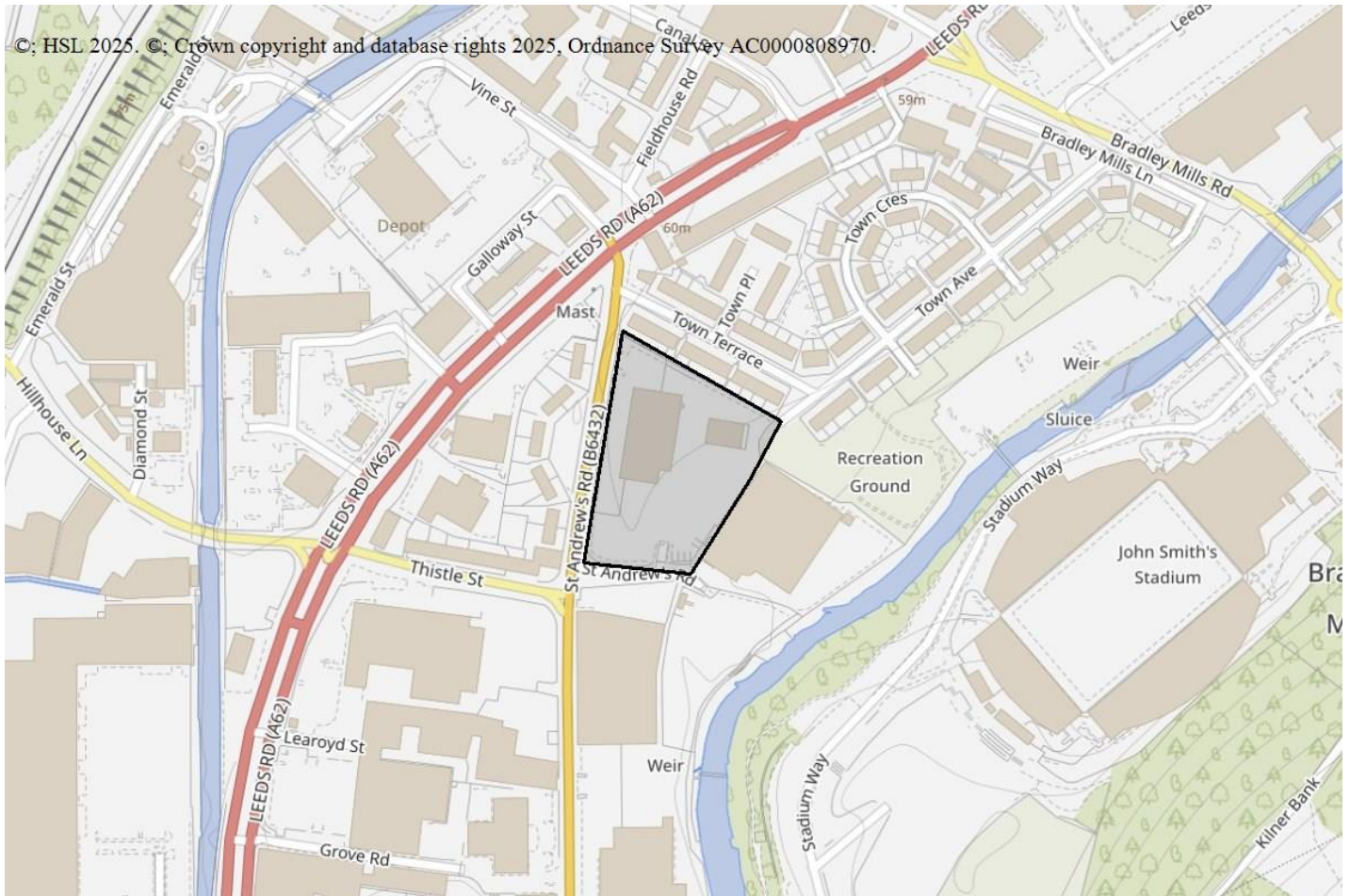


Breakdown:

Workplaces : Do Not Advise Against

Is it a workplace specifically for people with disabilities, e.g. sheltered workshops? No

Are there 100 or more occupants in any individual workplace building (that lie partly or wholly within a consultation distance)? Yes



This advice report has been generated using information supplied by Farzana Tabasum at Kirklees District (B) on 29 April 2025.

Note that any changes in the information concerning this development would require it to be re-submitted.