

This drawing is copyright and shall not be reproduced nor used for any other purpose without the written permission of the Bryan G Hall Ltd. This drawing must be read in conjunction with all other related drawings and documentation.

It is the contractors responsibility to ensure full compliance with the Building Regulations. Do not scale from this drawing, use figured dimensions only. It is the contractors responsibility to check and verify all dimensions on site. Any discrepancies to be reported immediately. IF IN DOUBT ASK.

Materials not in conformity with relevant British or European Standards/Codes of practice or materials known to be deleterious to health & safety must not be used or specified on this project.

Bryan G Hall Limited has not checked or verified, and shall therefore not be liable for any inaccuracies which may be attributable to any base plan(s) reports, data or information provided by the client, or purchased by the consultant on the clients behalf, that may have been utilised within this drawing.

Bryan G Hall Limited shall not be liable for the use of this or any associated document, for any purpose, by any person other than that for which they were provided.

It remains the clients and/or its appointed contractor's responsibility to check for any discrepancies. Any anomalies discovered must be reported immediately to Bryan G Hall Limited for verification.

The locations of utilities apparatus, if shown, have been reproduced from plans supplied to Bryan G Hall Limited. Although care has been taken when duplicating this information, these locations are approximate only. No guarantee can be given by Bryan G Hall Limited for their accuracy. It is the clients or its appointed agent/contractor's responsibility to verify the exact locations on site by appropriate means prior to mechanical excavation.

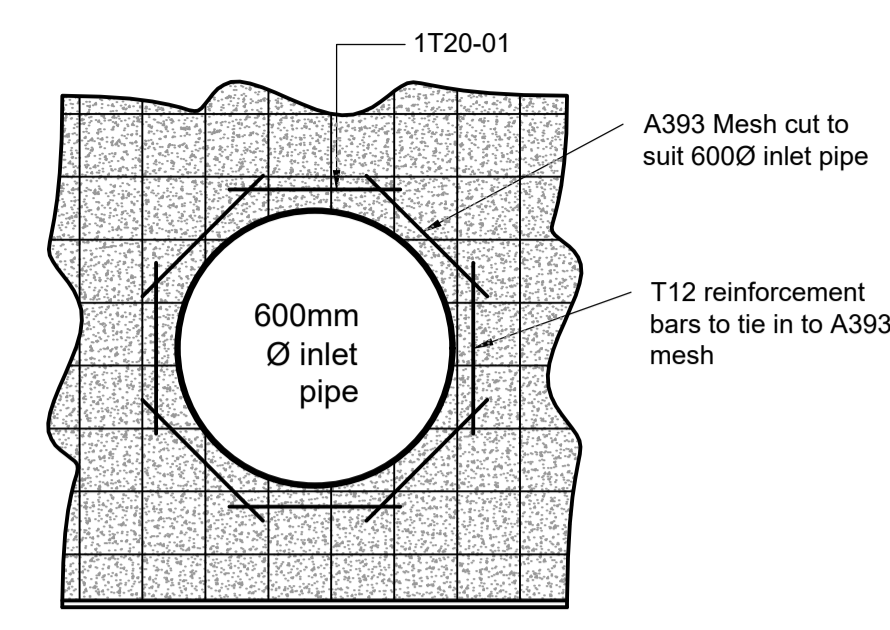
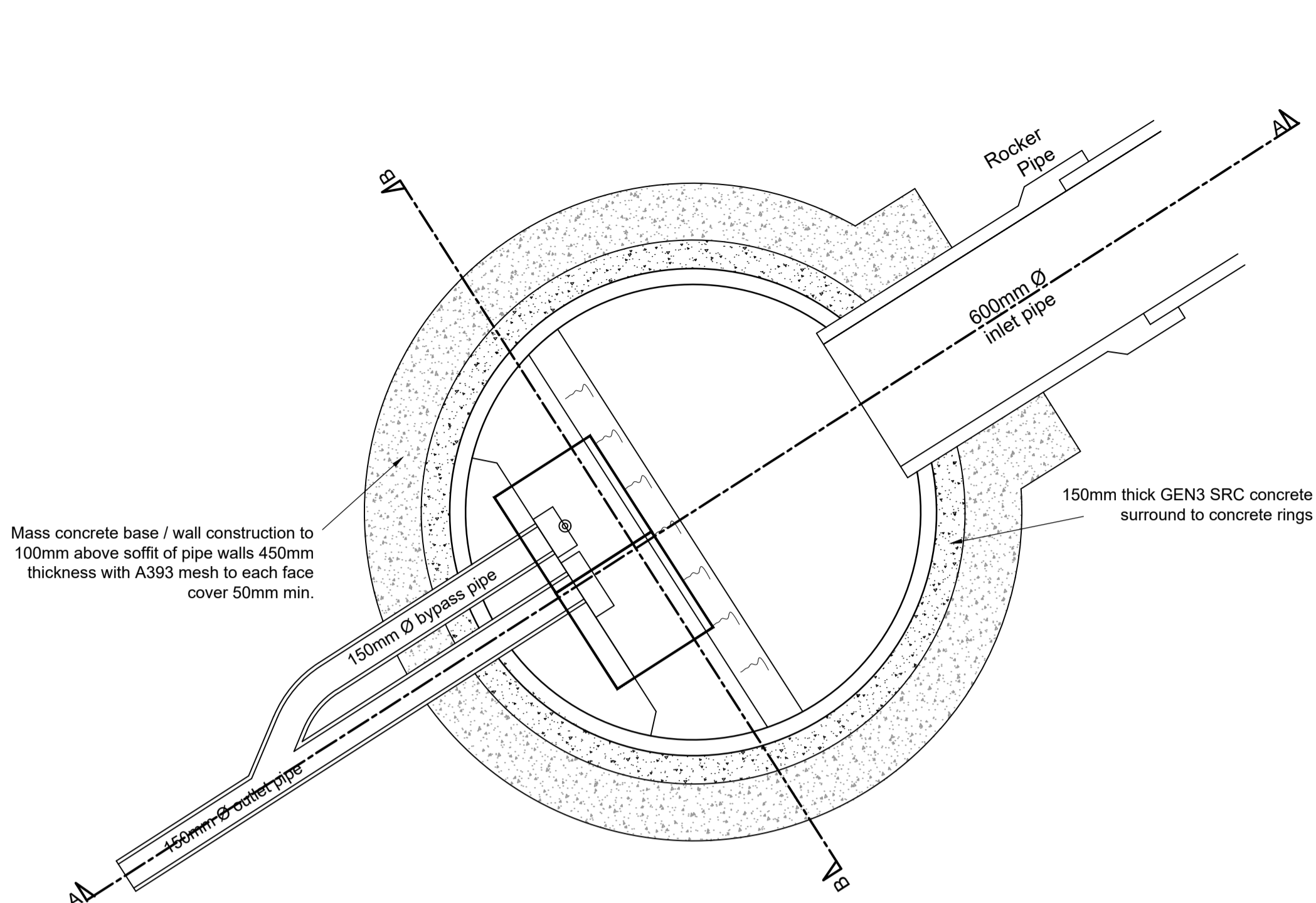
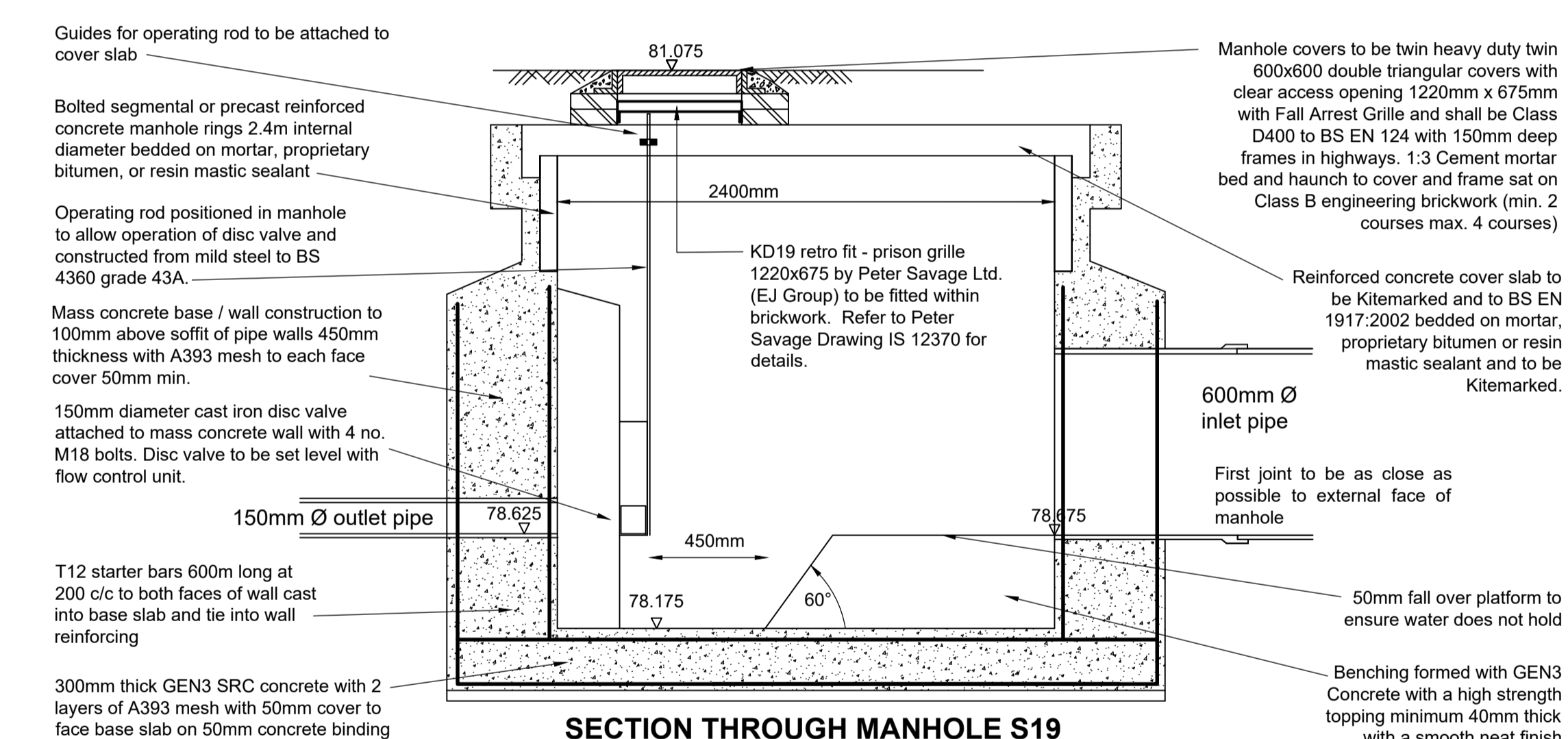


TABLE 1

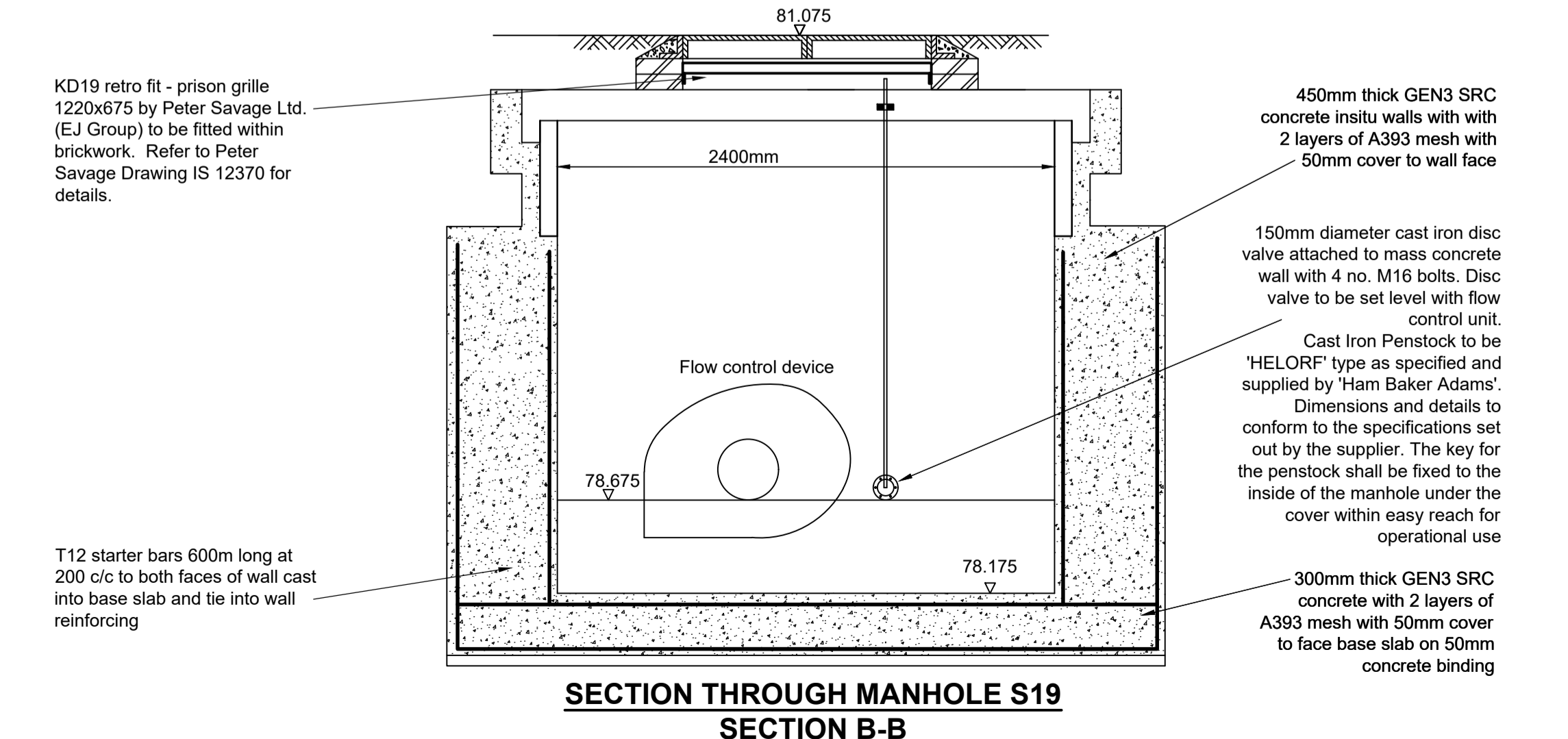
PIPE SIZE	BAR SIZE
600 - 1200mm	T12
1350 - 1500mm	T16
> 1500mm	T20

SECTION THROUGH REINFORCEMENT TO INLET PIPE
SEE TABLE 1 FOR BAR SIZES REQUIRED

MANHOLE S19
PLAN VIEW



SECTION THROUGH MANHOLE S19
SECTION A-A



SECTION THROUGH MANHOLE S19
SECTION B-B

Technical Specification

Control Point	Head (m)	Flow (l/s)
Primary Design	1.800	10.000
Flush-Fl ^o	0.525	9.978
Kick-Fl ^o	1.089	7.900
Mean Flow	8.743	

Hydro-Brake[®] Optimum Flow Control including:

- 3 mm grade 304 stainless steel
- Integral stainless steel pivoting for open door allowing clear line of sight through to outlet, low stainless steel operating rope
- Steel flanged flush to maximize conversion
- Hydro-Brake[®] Optimum Flow Control
- Stainless steel flange
- Rubber gasket to seal outlet
- Indicative Weight: 31 kg

hydro-int.com/patents

IMPORTANT: THE HEADFLOW CHARACTERISTICS OF THIS SHE-0134-1000-1800-1000 HYDRO-BRAKE OPTIMUM FLOW CONTROL ARE UNIQUE. DYNAMIC HYDRAULIC MODELING EVALUATES THE FULL HEADFLOW CHARACTERISTIC CURVE. THE USE OF ANY OTHER FLOW CONTROL WILL INVALIDATE ANY DESIGN BASED ON THIS DATA AND COULD CONSTITUTE A FLOOD RISK.

THIS DESIGN LAYOUT IS FOR ILLUSTRATIVE PURPOSES ONLY. NOT TO SCALE.

DESIGN ADVISE: The use of any other flow control will invalidate any design based on this data and could constitute a flood risk.

DATE: 18/01/2023 15:34
 SHE-0134-1000-1800-1000
 DESIGNER: Nathan Bridge
 REF: S19
 Hydro-Brake[®] Optimum

Technical Specification

Control Point	Head (m)	Flow (l/s)
Primary Design	1.800	10.000
Flush-Fl ^o	0.525	9.978
Kick-Fl ^o	1.089	7.900
Mean Flow	8.743	

hydro-int.com/patents

Head (m)	Flow (l/s)
0.000	0.000
0.062	2.199
0.124	6.355
0.186	8.424
0.248	9.091
0.310	9.516
0.372	9.775
0.434	9.915
0.497	9.973
0.559	9.971
0.621	9.927
0.683	9.849
0.745	9.738
0.807	9.589
0.869	9.387
0.931	9.113
0.993	8.742
1.055	8.250
1.117	7.994
1.179	8.199
1.241	8.398
1.303	8.592
1.366	8.782
1.428	8.967
1.490	9.148
1.552	9.325
1.614	9.499
1.676	9.669
1.738	9.836
1.800	10.000

hydro-int.com/patents

DATE: 18/01/2023 15:34
 SHE-0134-1000-1800-1000
 DESIGNER: Nathan Bridge
 REF: S19
 Hydro-Brake[®] Optimum

To Suit KD19 - Retro Fit

Drawing No: IS 12370
 Rev: Initial Draft

Section A-A: 1215 mm, 1195 mm, 97.5 mm, 107.5 mm, 180 mm, 107.5 mm, 180 mm, 107.5 mm, 97.5 mm.

Section B-B: 1215 mm, 1195 mm, 435 mm, 435 mm, 97.5 mm, 107.5 mm, 180 mm, 107.5 mm, 180 mm, 107.5 mm, 97.5 mm.

Detail C: 50 mm, 110 mm, 670 mm, 650 mm.

Detail E: Hasp & Staple is 316 Stainless Steel, Hasp & Staple in Locked Position.

Detail C: Lock Clip Retained to Frame, Grille Locked in Open Position.

Detail D: Lock Clip Retained to Frame.

3D Views: E, D, C.

Weld on Pivot Bar on Both Sides of Grille to Minimise Lateral Movement.

Rev: NB IE, NB IE, DRN CHK APR

Rev.	Date:	Amendment:	DRN	CHK	APR
B	24.10.24	Updated as per Icosa comments dated 15.10.24	NB	IE	IE
A	03.12.23	Drainage reviewed and amended following request from Newett Homes dated 28.11.23. Tank invert level raised to avoid assumed bedrock levels.	NB	IE	IE

BRYAN G HALL
 CONSULTING CIVIL & TRANSPORTATION PLANNING ENGINEERS

LEEDS T 0113 246 1555 | LONDON T 0203 5532336

Suite E15 | Josephs Wall | www.bryanghall.co.uk
 Hanover Walk | LEEDS | LS3 1AB | E transportleeds@bryanghall.co.uk

Client: Newett Homes

Status:

Scale: 1:25
 Size: A1 - 841 x 594 | Drawn: NB | Chkd: IE | Appvd:

Project: Residential Development
 Penistone Road, Fenay Bridge

Title: Flow Control Manhole
 Manhole S19

Drawing No: 22/491/500/005 | Revision: B
 Job No: 22-491 | Date: 06.02.23

smas WORKSAFE | CHAS | twitter.com/Bryanghall1 | Bryan G Hall

Copyright Reserved Bryan G Hall Ltd.