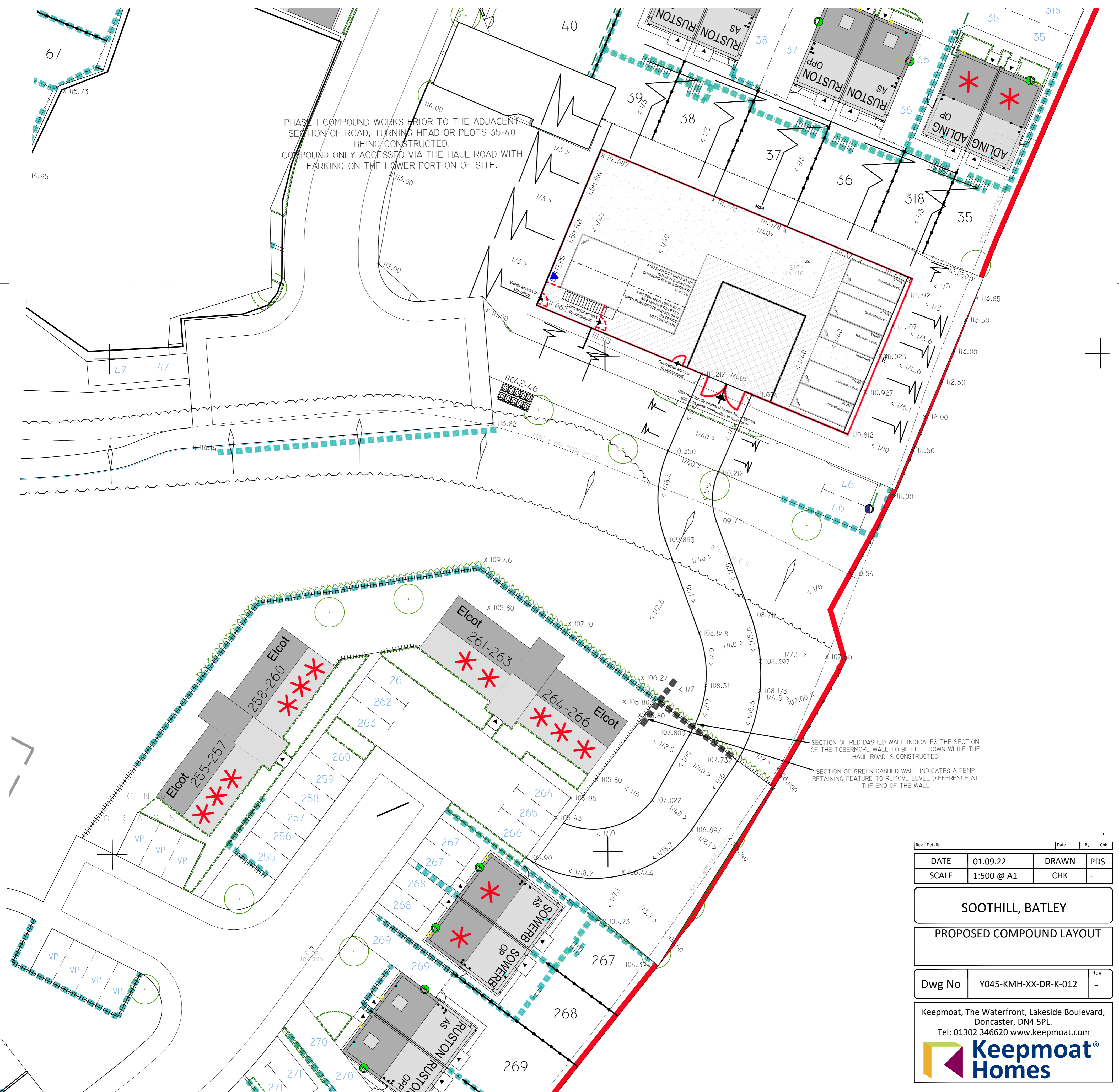


- KEY**
- Hoarding to perimeter of compound
 - - - 1.8m Fence
 - Post and rail fence (de-mountable rails for access)
 - ▲ Services (elec, water) entry point
 - - - Parking space
 - ✱ Designated crossing point
 - Wearing Course
Crushed Stone base with Macadam or Concrete finish
 - Running area
Crushed Stone base with Concrete finish
 - Stone areas
Clean stone (no fines)



Rev	Details	Date	By	Chk
DATE	01.09.22	DRAWN	PDS	
SCALE	1:500 @ A1	CHK	-	
SOOTHILL, BATLEY				
PROPOSED COMPOUND LAYOUT				
Dwg No	Y045-KMH-XX-DR-K-012	Rev	-	
Keepmoat, The Waterfront, Lakeside Boulevard, Doncaster, DN4 5PL. Tel: 01302 346620 www.keepmoat.com				