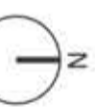
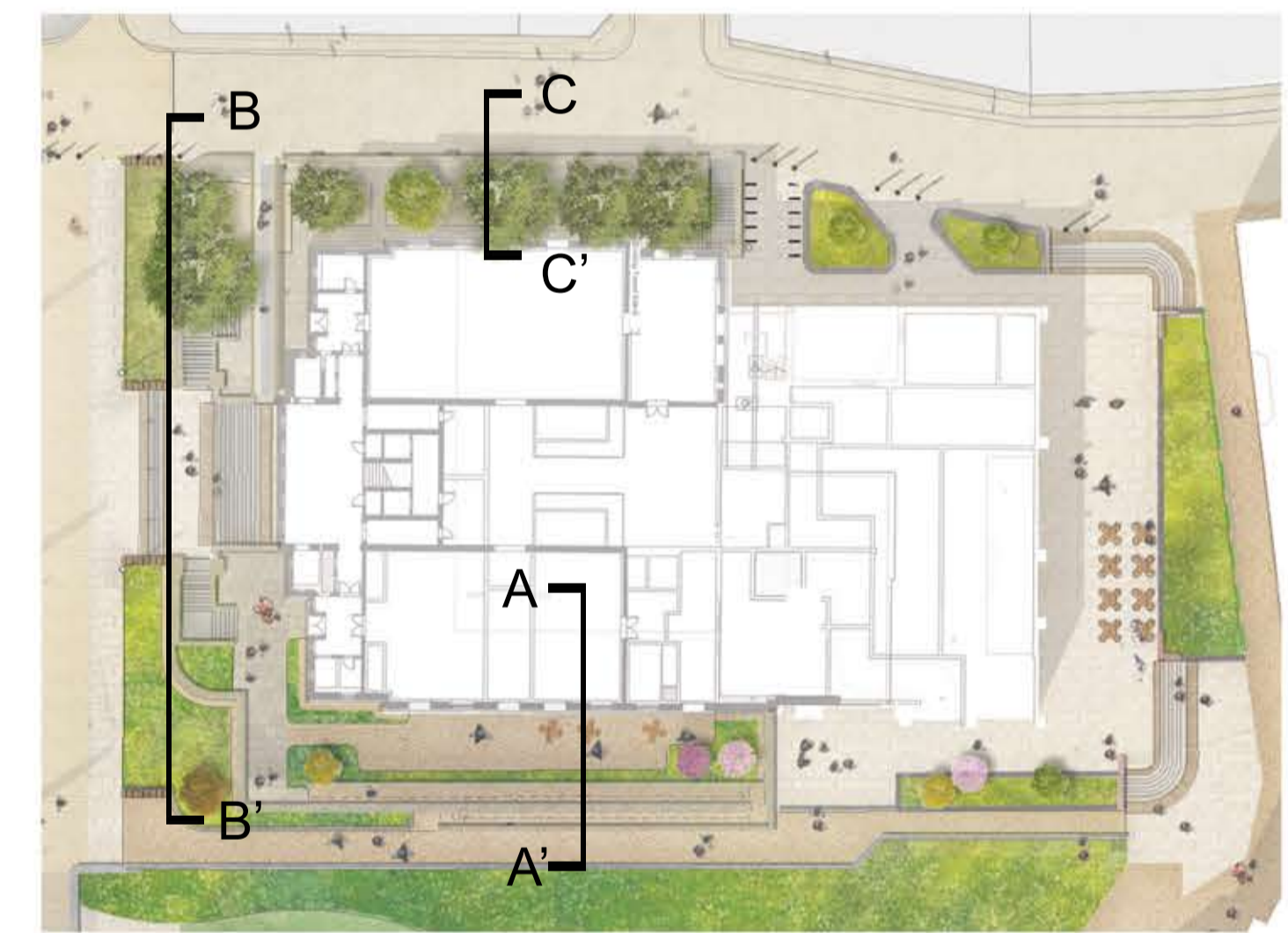


- Notes**
1. All dimensions in mm, unless otherwise stated.
 2. Scaling from drawing if printed incorrectly may lead to errors.
 3. All hatch patterns are indicative only unless stated otherwise.
 4. This drawing is to be read in conjunction with the following re-form landscape architecture documentation:
 - 0857-RFM-XX-00-DR-L-0001-Illustrative Landscape Layout - Ground Floor
 AND all relevant documentation from the design team intent. The contractor is to check and verify all levels and dimensions against site survey information.
 5. Levels information on this drawing illustrates the design intent. Any discrepancies in the design information are to be brought to the attention of re-form landscape architecture, in writing, prior to commencement of construction works.
 6. All proprietary products shall be installed in strict accordance with manufacturers written instructions.
 7. Refer to other consultants' drawings and specifications for the following design information:
 - Foundation details
 - Base course and/or sub bases design & specification
 - Waterproofing of any element
 - Levels & Drainage design and infrastructure
 - Lighting and ducting



Date	Description of revision	TL	HT	GD	PO2
22.08.24	planting area changed	TL	HT	GD	PO2
15.08.24	drawing issue	TL	HT	GD	PO1
		Drawn	Checked	Approved	Revision
		by	by	by	by

re-form
landscape architecture

W: re-formlandscape.com
E: info@re-formlandscape.com
T: Edinburgh +44 (0)131 354 1876
Leeds +44 (0)113 245 4695
Manchester +44 (0)161 397 4953

Project
OUR CULTURAL HEART: PHASE 2
RF21-914

Client
KIRKLEES COUNCIL

Document title
PHASE 2 SECTIONS

Paper size A1 **Scale** 1:50

Status FOR INFORMATION **Revision** S2

Drawing number IR430300-RFM-XX-00-DR-LD-000007 **Revision** P02

© re-form landscape architecture