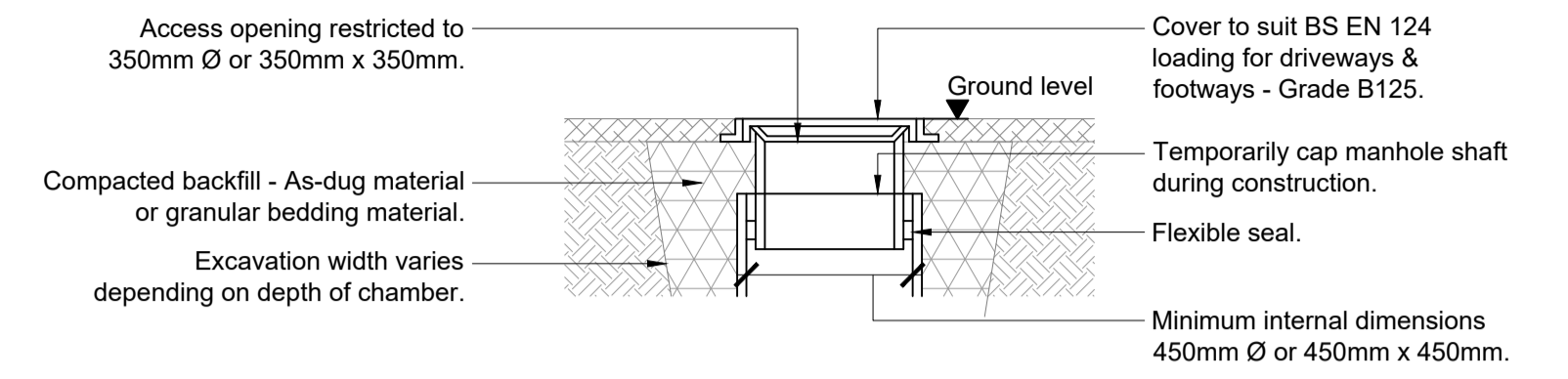


TYPICAL MANHOLE DETAIL
SCALE 1:20

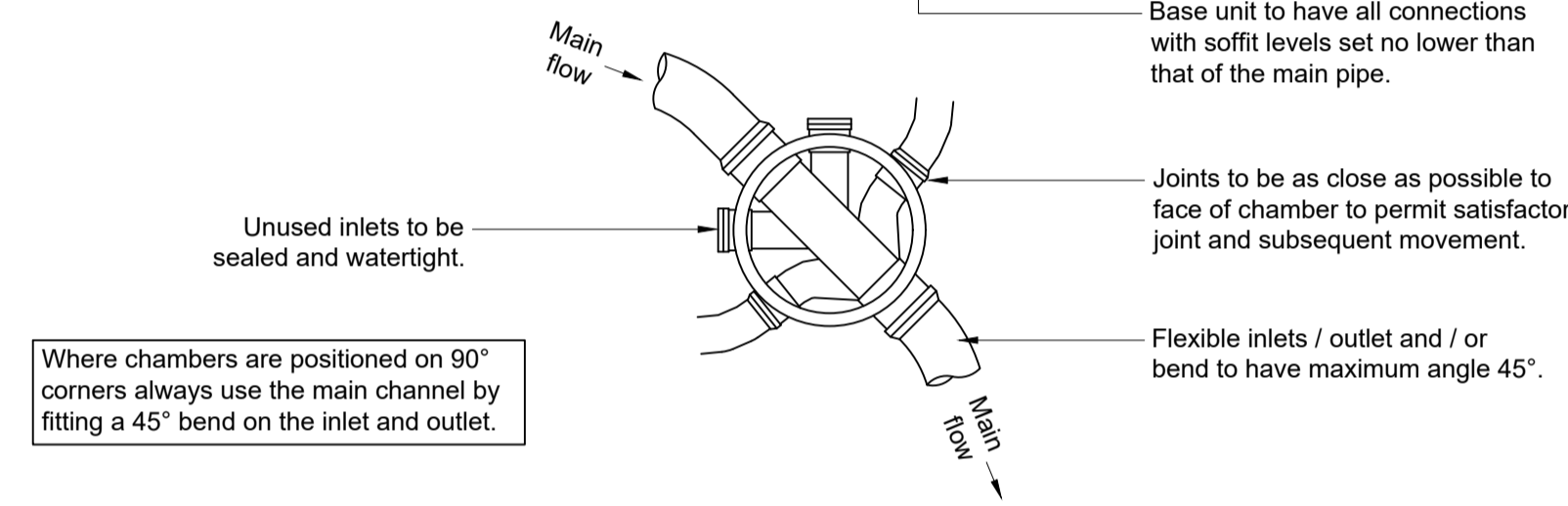
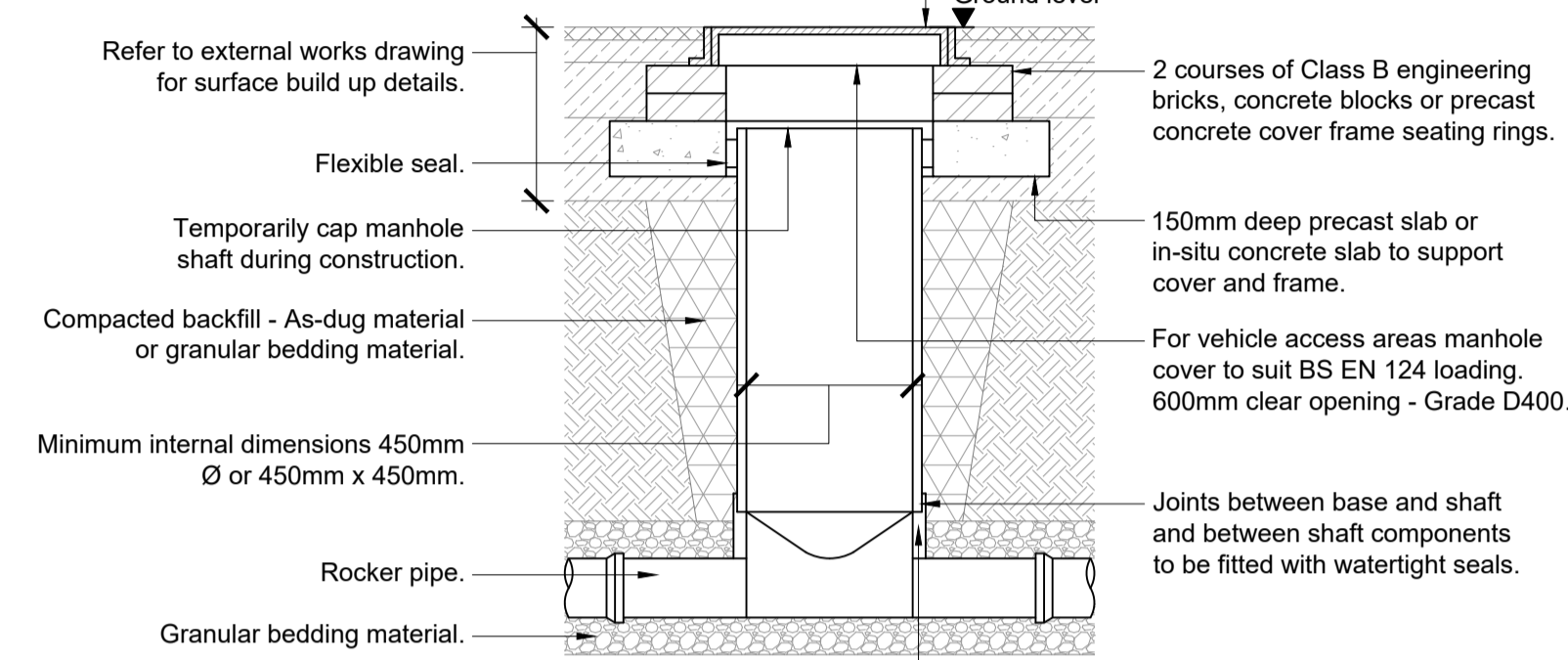
ADDITIONAL NOTES:

- Manhole diameter to be as follows :
1200mm Ø (pipe Ø up to 300mm)
1350mm Ø (pipe Ø > 300mm up to 450mm)
1500mm Ø (pipe Ø > 450mm up to 525mm)
1800mm Ø (pipe Ø > 525mm up to 750mm)
2100mm Ø (pipe Ø > 750mm up to 900mm)
- 1050mm concrete rings may be used where the manhole is of a 'Straight Through' or 'Terminal' type, where the depth to invert does not exceed 2.5m and the pipe diameter is not greater than 150mm.
- Where the depth to the top of the benching exceeds 3.0m, a type 'Z' manhole shall be used.
- Manhole construction to be in accordance with the current editions of 'Sewers for Scotland' section 4 and 'Civil Engineering Specification for the Water Industry'.
- Top and bottom P.C. rings to be plain ended. Channel to be formed using pre-formed half channel.
- Where pipes are 600mm diameter or greater, handrail, safety chain and toe holes to be provided.
- Connection to be made soffit/soffit where upstream pipe is smaller than outlet pipe. Invert/ invert when upstream pipe is equal or larger than outlet.
- A flexible pipe shall be provided as close as feasible to the outside face of the manhole. The next pipe away will be a rocker pipe. See Clause 4.6.6.2.
- Where there is no change in pipe diameter, the manhole invert shall follow the same gradient as the outgoing sewer.
- Step irons or otherwise to be fitted as required by the Authority's policy.

Plastic chambers and rings shall comply with BS EN 13598-1 and BS EN 13598-2 or have equivalent independent approval.

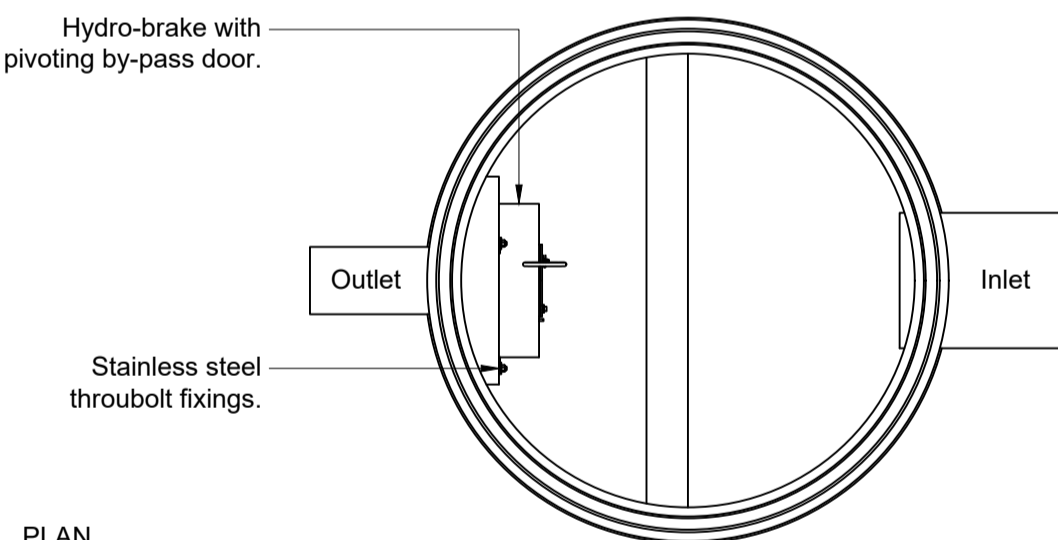


Plastic chambers and rings shall comply with BS EN 13598-1 and BS EN 13598-2 or have equivalent independent approval.

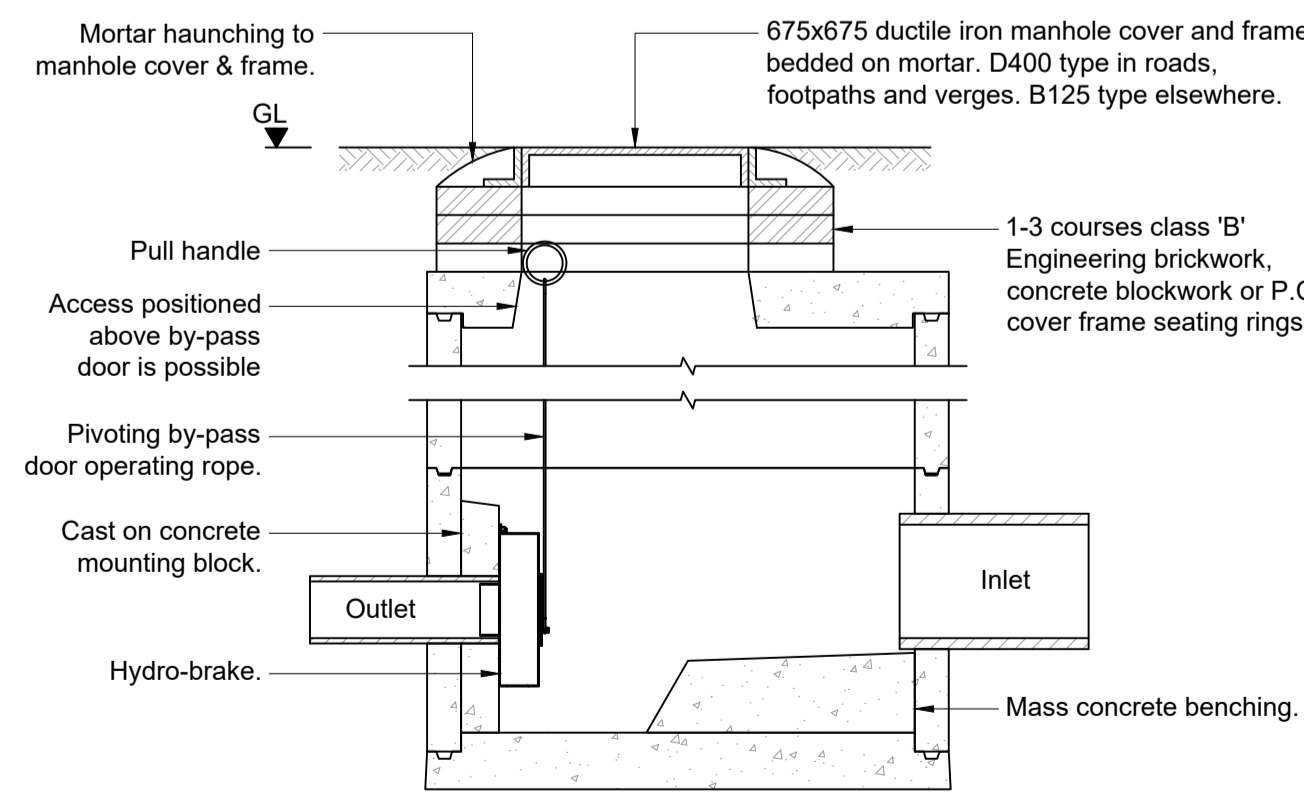


TYPICAL INSPECTION CHAMBER DETAIL - TYPE 3 (FLEXIBLE MATERIAL DETAIL)
(Depth from cover level to soffit of pipe 3m)

SCALE 1:20



PLAN



SECTION

TYPICAL HYDROBRAKE CHAMBER DETAIL

SCALE 1:20

NOTES:

- Do not scale from this drawing.
- This drawing is copyright and is sent to you in confidence. It must not be copied, used or disclosed, in whole or in part, to third parties without written permission. It remains the property of Booth King Partnership Ltd. (BKPL) and must be returned on request.
- This drawing is to be read in conjunction with all relevant contractual documents.
- Anyone using this drawing must be aware of their legal duties under the CDM Regulations 2015, refer to the HSE website for further information. BKPL are not Principal Designers.
- All dimensions shown on this drawing are in millimeters unless noted otherwise.
- If the Contractor consider that they do not have sufficient information to safely complete the works detailed on this drawing, they should contact the Engineer.
- This document uses revision codes in accordance with ISO EN 19650: P, Preliminary (non-contractual) - review, comment or approval. C, Contractual - Approved for stage completion.
- This document uses status codes in accordance with ISO EN 19650: Work in progress: S0 - WIP Shared (non-contractual); S1 - Coordination, S2 - Information, S3 - Review, S4 & S5 - Approval. Published (contractual); A1, An, etc. (where 'n' relates to the project stage)
- This document uses project stages in accordance with the IStructE Structural Plan of Work 2020: 2 - Concept, 3 - Coordination, 4 - Technical Design, 4.5 - Production Design, 5 - Construction, 6 - Handover.
- Only documents with a revision code C# (where '#' relates to a revision number) and status code A5 are suitable for construction. Documents with status code A6 indicate final construction ONLY. Any deviations to that which is on site is not the liability of BKPL.

C01	19.06.24	STAGE 3 - TENDER	CM
REV.	DATE	REVISION DETAILS	INITIALS
CURRENT DRAWING REVISION CHECKED BY			EZ
CURRENT DRAWING REVISION APPROVED BY			EZ

DRAWING STATUS:	PROJECT STAGE:
A3	STAGE 3

boothking
PARTNERSHIP LIMITED

CONSULTING CIVIL & STRUCTURAL ENGINEERS
www.booth-king.co.uk office@booth-king.co.uk
RAMSBOTTOM MANCHESTER EDINBURGH
Tel: 01706 822 022 Tel: 0161 694 7087 Tel: 0131 229 1547

PROJECT:
**Premier Inn
Huddersfield Central**

TITLE:
**Drainage Details
Sheet 1**

SCALE (A1)	AUTHOR	DATE	REVISION	BKPL No.
As noted	CM	Jun 24	C01	15106

DRAWING REF:
15106-BKP-XX-XX-DR-S-0590