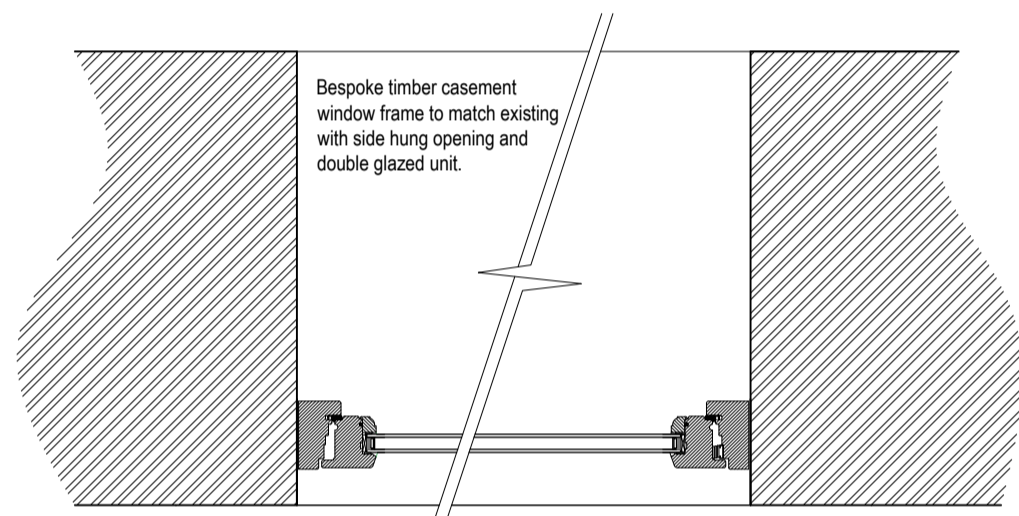
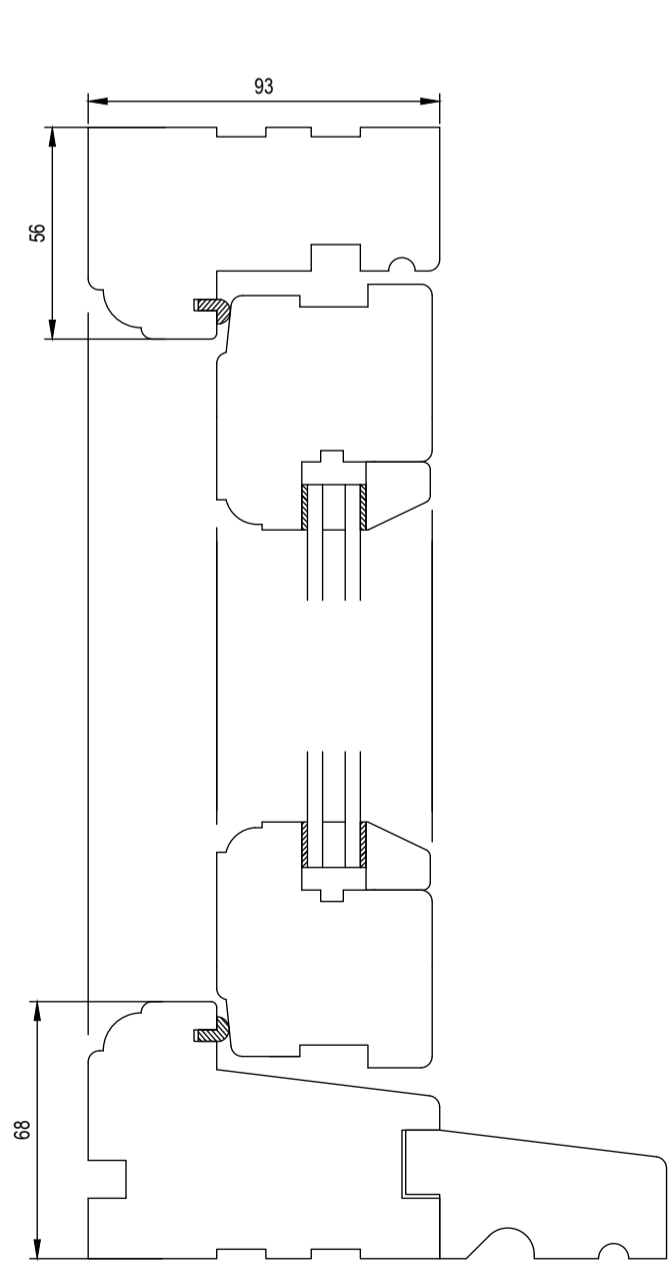


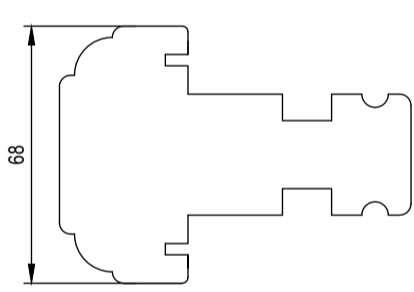
Typical section casement window
Scale 1:10



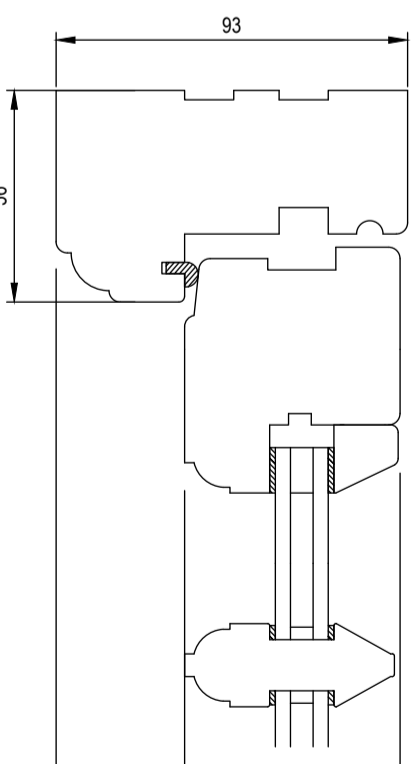
Section C - C Detail
Scale 1:10



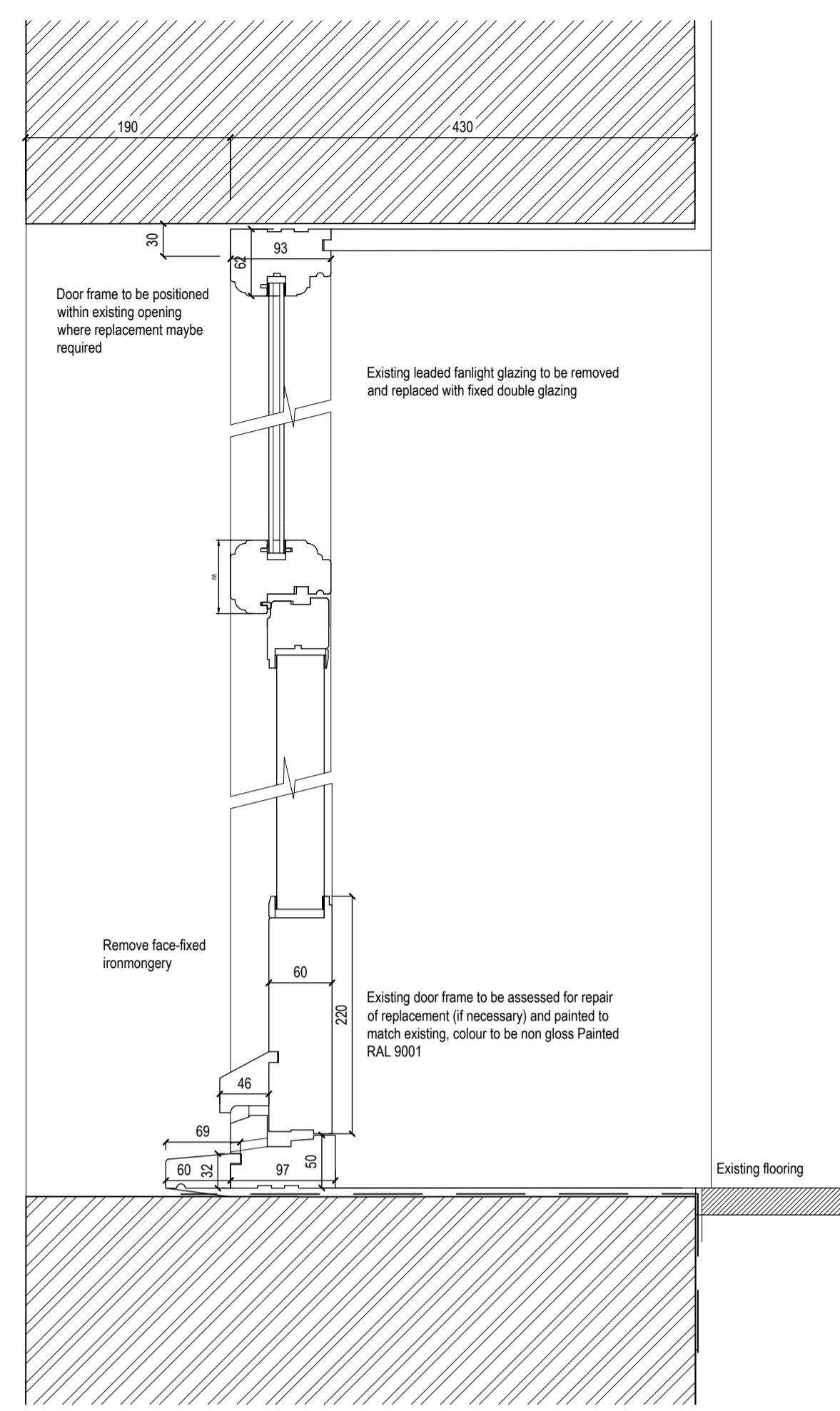
Typical Timber Head/Cill Detail (Openable)
Scale 1:2



Typical Timber Mullion Detail (Openable)
Scale 1:2

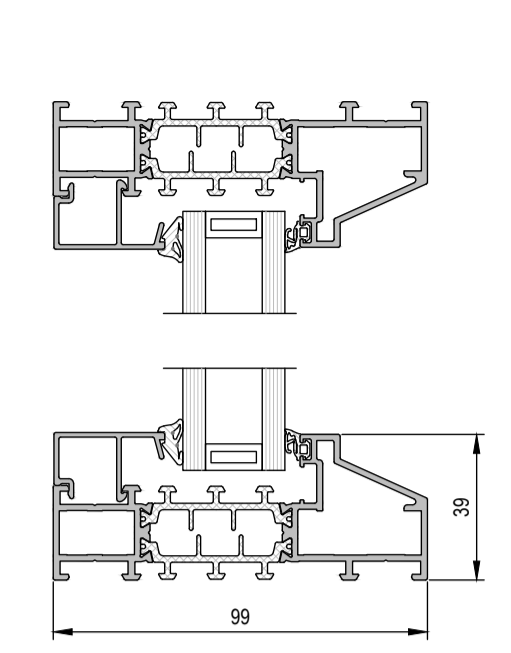


Typical Timber Jamb Detail (Openable)
Scale 1:2

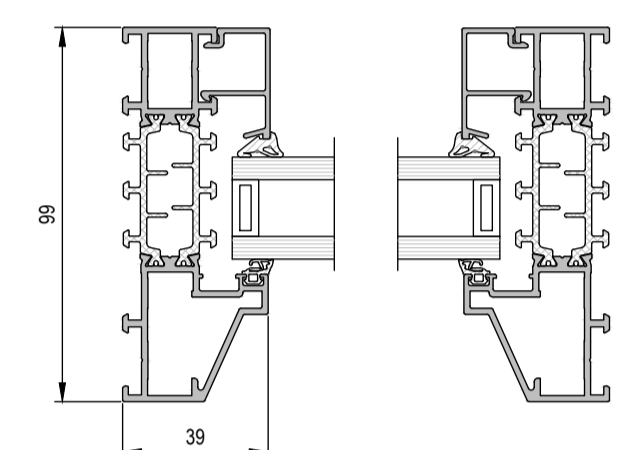


Main Entrance Door Detail - House 1
Scale 1:5

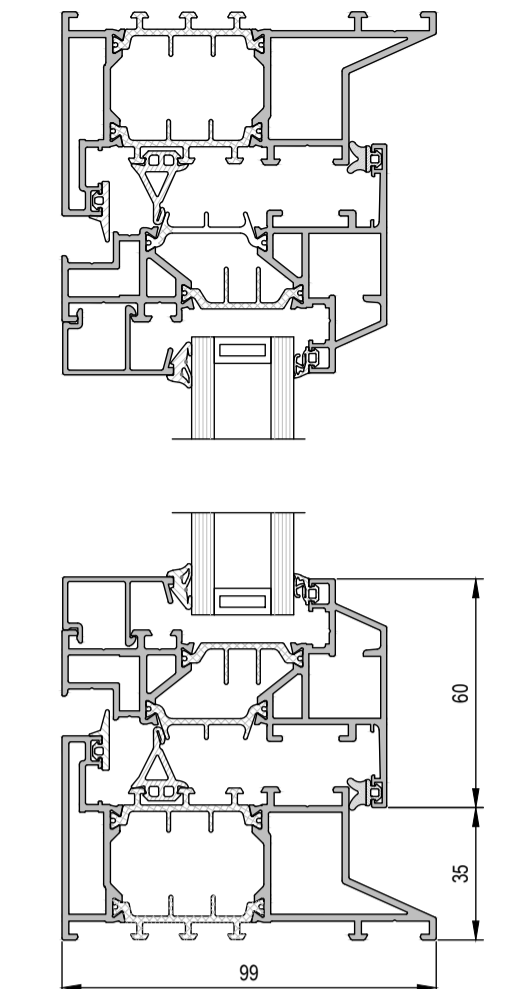
1. The Keylite Conservation Rooflight with ironmongery fixed to structural rafter supports or jamb using coach bolts fitted through fixing rails
2. Structural rafter support at jamb and structural trimmer.
3. Insulation fitted between structural supports.
4. Timber packers fixed to structural supports with 9mm WBP ply spacer to which plasterboard/timber lining is fixed
5. Plasterboard Lining
6. Plaster skim to align with rooflight lining to provide 'frameless' internal appearance. Rooflight linings 1d must be painted with timber finishing paint once the rooflight is installed to ensure longevity of this component.
7. Head hardwood tilting fillet
- 7b Cill hardwood tilting fillet - to provide minimum 5 degree fall for shedding rain water.
- 8 & 19. Line of general roofing membrane
10. Code 3 lead flashing at head. Carry flashing up the roof and lap under general roofing (Note consider using Code 4 in severe exposures)
11. Roofing tiles
12. Jamb flashing - lead soakers as shown (or mortar bed)
13. Perimeter silicone seal. Seal perimeter of rooflight just prior to installation of the rooflight using a thick continuous bead of low modulus neutral cure silicone sealant. Ensure sealant to cill is coated in a position where it will be covered by the cill flange of the rooflight.
14. Roofing membrane to rooflight head. Dress under general roofing membrane 19. Under lead flashing 10 and over general roofing membrane 8 to ensure suitable lap.
15. Insulation fitted on top of structural supports.
16. & 17 Timber packers fixed to top of structural support (same height as counter battens + top insulation)
18. Counter batten
20. Vapour barrier.



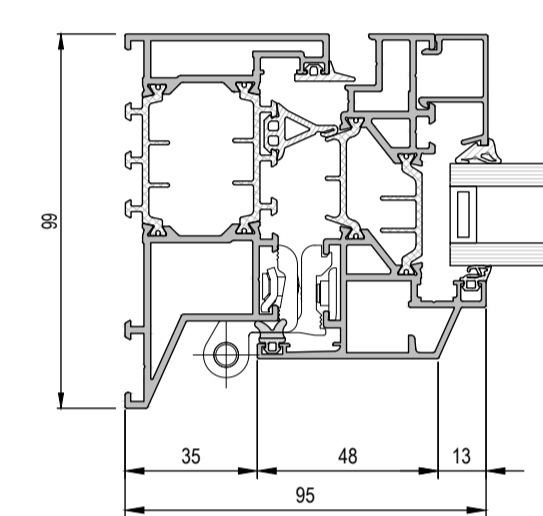
Typical Aluminium Head/Cill Detail (Fixed)
Scale 1:2



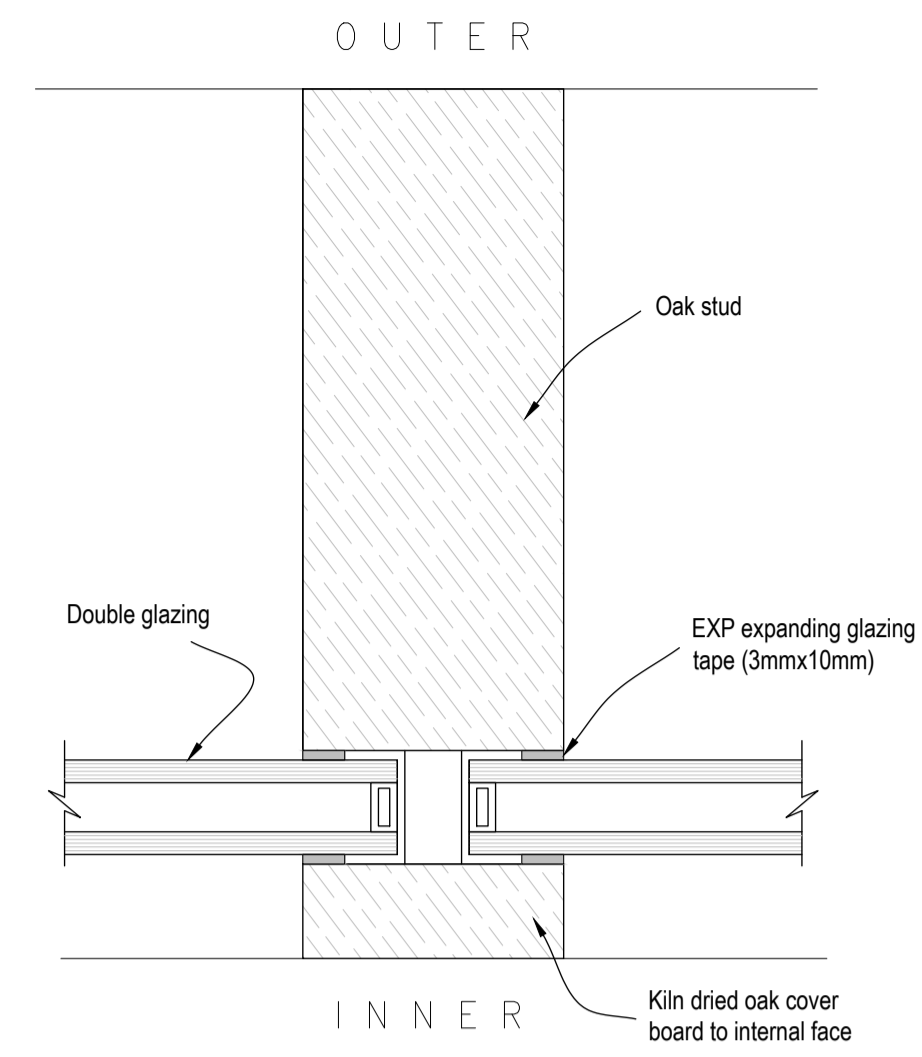
Typical Aluminium Jamb Detail (Fixed)
Scale 1:2



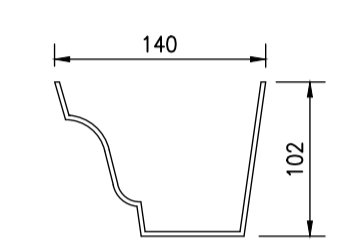
Typical Aluminium Head/Cill Detail (Openable)
Scale 1:2



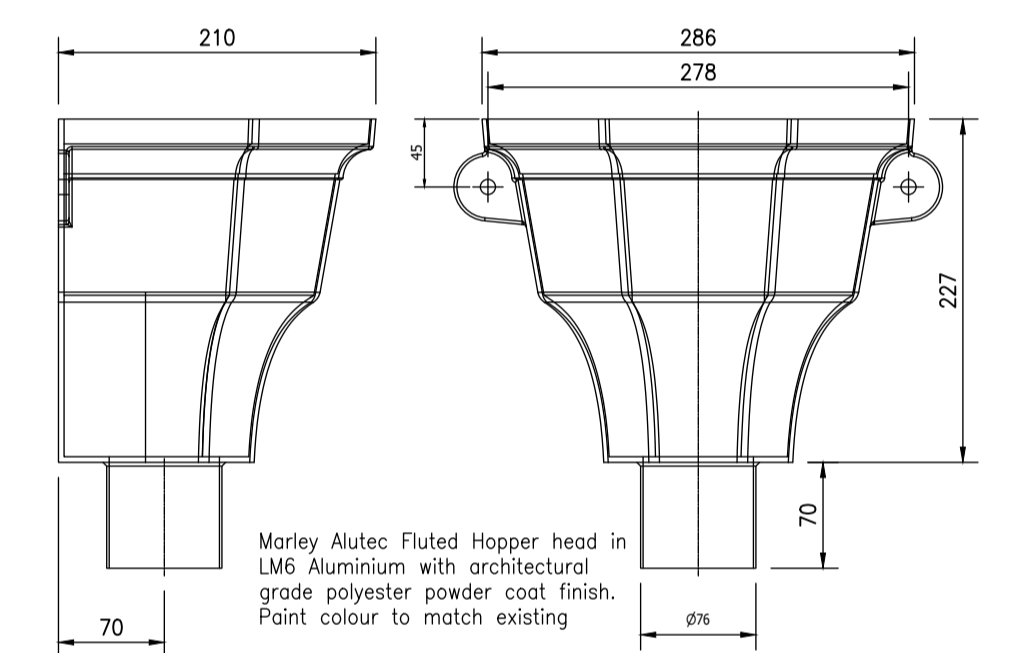
Typical Aluminium Jamb Detail (Openable)
Scale 1:2



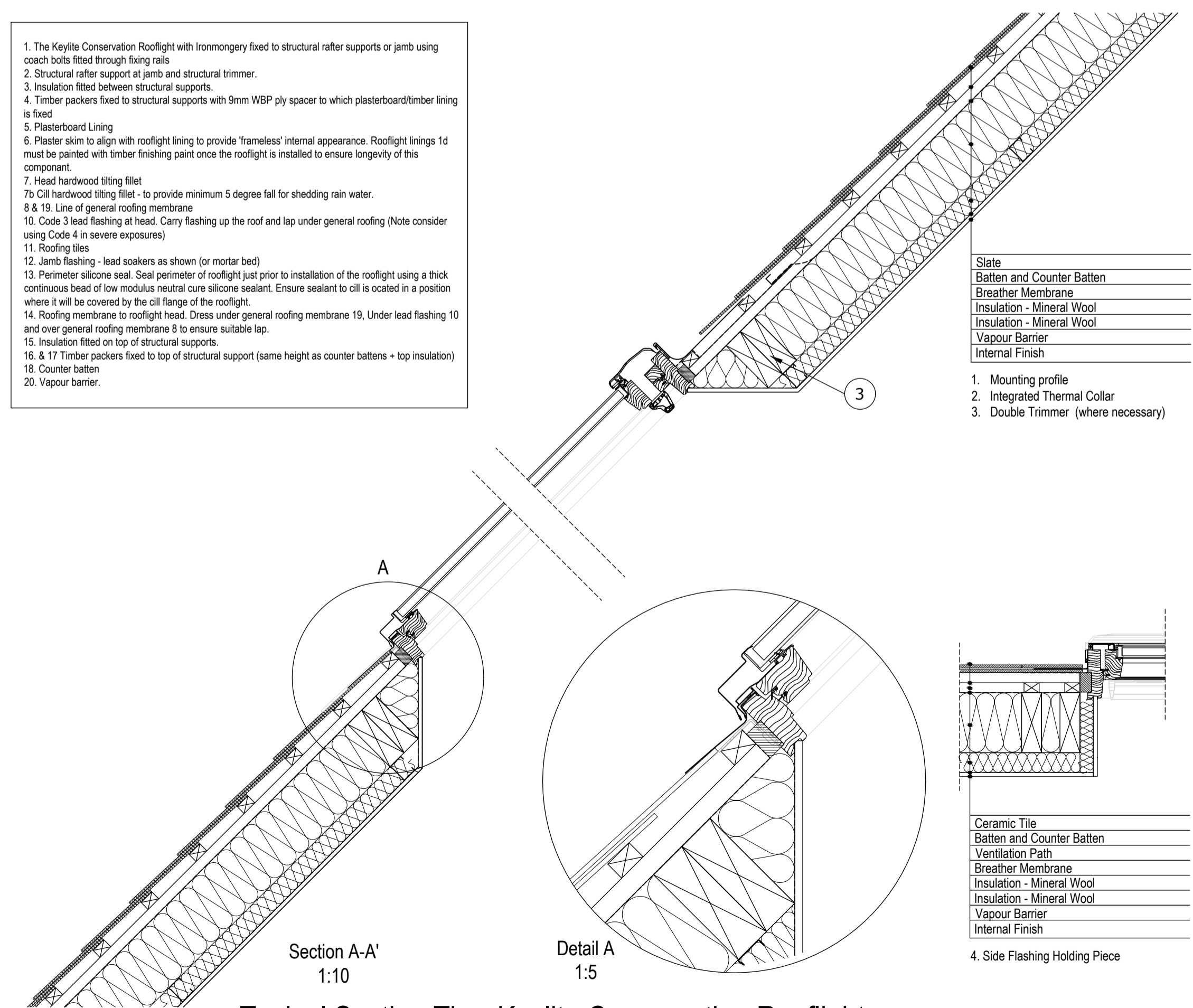
Timber Window Mullion Stud Detail
Scale 1:2



Typical Gutter Section Detail
Scale 1:5



Typical Hopper Detail
Scale 1:5



Section A-A' 1:10
Detail A 1:5
Section B-B' 1:10
Typical Section Thru Keylite Conservation Rooflight
Scale 1:10

- Slate
- Batten and Counter Batten
- Breathler Membrane
- Insulation - Mineral Wool
- Insulation - Mineral Wool
- Vapour Barrier
- Internal Finish

1. Mounting profile
2. Integrated Thermal Collar
3. Double Trimmer (where necessary)

- Ceramic Tile
- Batten and Counter Batten
- Ventilation Path
- Breathler Membrane
- Insulation - Mineral Wool
- Insulation - Mineral Wool
- Vapour Barrier
- Internal Finish

4. Side Flashing Holding Piece

NOTES

1. No dimensions to be scaled. IF IN DOUBT ASK.
2. All dimensions must be checked and verified on site by the Contractor prior to the commencement of works and Hinchliffe Architecture & Design Ltd. to be notified of any discrepancies.
3. The copyright of these drawings remains the property of Hinchliffe Architecture & Design Ltd. They must not be reproduced in any way without prior written consent from the originator (Hinchliffe Architecture & Design Ltd.)

Health & Safety Note

The details on this drawing have been prepared on the assumption that a competent contractor will be carrying out the works. If the contractor(s) considers that there is insufficient Health and Safety information on this drawing, this should immediately be brought to the attention of the designer.

Rev.	Date	Description
Status: PLANNING		
Client: P KANE & J TURNER		
Project: OLDFIELD, OLDFIELD ROAD, HONLEY, HOLMFIRTH, HD9 6RL		
Drawing Title: PROPOSED WINDOW, DOOR AND ROOFLIGHT & GUTTER DETAILS		
Scale (at A1): AS SHOWN		Date: JUNE 2024
Dwg. no.: 254-24-PL05	Rev.:	