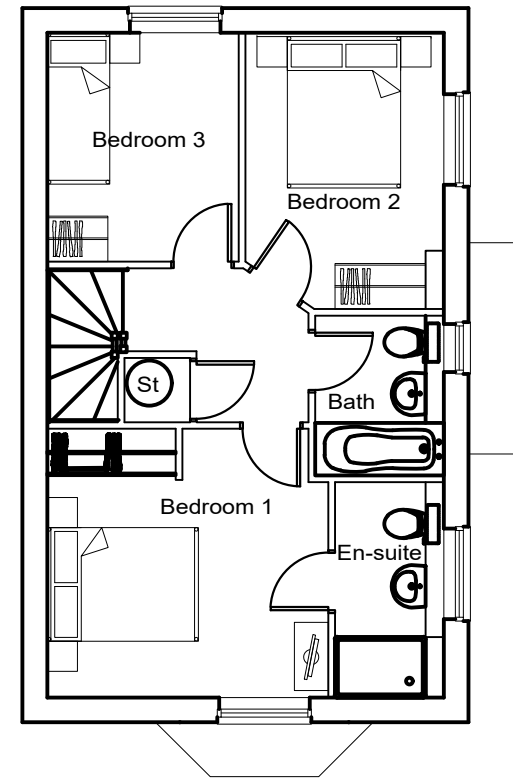


Ground Floor Plan



First Floor Plan

- **Living Room**
5.3m x 3m
Area: 16m² (172ft²)
- **Kitchen/Dining**
5.3m x 2.6m
Area: 13.64m² (147ft²)
- **WC**
1.9m x 1.2m
Area: 2.28m² (25ft²)
- **Utility**
2.2m x 1.5m
Area: 3.34m² (36ft²)
- **Bedroom 1/Ensuite**
3.2m x 3.1m / 1.8m x 1.7m
Area: 14.73m² (159ft²)
- **Bedroom 2**
3.1m x 3.1m
Area: 10.17m² (109ft²)
- **Bedroom 3**
2.9m x 2.0m
Area: 5.87m² (63ft²)
- **Bathroom**
2.2m x 2.0m
Area: 4.29m² (46ft²)

eleven52architects

eleven52architects
30 The Fairway
Pudsey
Leeds LS28 7RE

T: +44(0)7958738229
E: leeds@eleven52architects.co.uk
W: eleven52architects.co.uk

Client:

Britology

Project Ref: 0067 Project Name: Residential Development, Long Lane

Drawing Reference:
0067_LON_0_HT009

Title:

House Type E2

Created By:	Reviewed By:	Date:	Scale at A3:
KB		11.04.19	1:100

Revision:	Revision status
A	Planning

This drawing and its contents belong to eleven52architects Limited. We retain the Copyright and Intellectual property rights for all of the information contained within. We do not allow it to be copied, used, sent, shared or issued to anyone, in part or as a whole without our prior written consent.

Please note that our drawings should be used, read or viewed together with any other drawings, documents or information which we have intended to accompany it. It is unlikely that any drawing is intended to be used alone. That information may be produced by us but also may be produced by our sub consultants or other project team members. You should always check with us what information might be relevant that is not included here.

Whilst we produce all of our drawings to a recognised scale, you should take caution when measuring from reproduced or copied drawings. The process of printing can often lead to scaling errors in the actual printed document and you should always use figured dimensions when we include them. For all other occasions you should contact us for absolute clarity. We take no responsibility if you choose to work it out without us.

We make every attempt to make sure our drawings are accurate and complete however if you see a discrepancy or have any other queries then you should always contact us on the numbers or e mail address detailed before acting.

E2

3B5P: Private

Area: 93.00m²
1001 ft²

