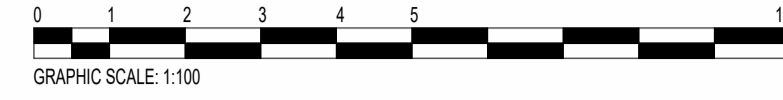


Only figured dimensions should be used.
 Scaled dimensions should be checked with the Architect.
 This drawing together with the design, is the property and copyright
 of the Architect and must not be reproduced without written
 permission



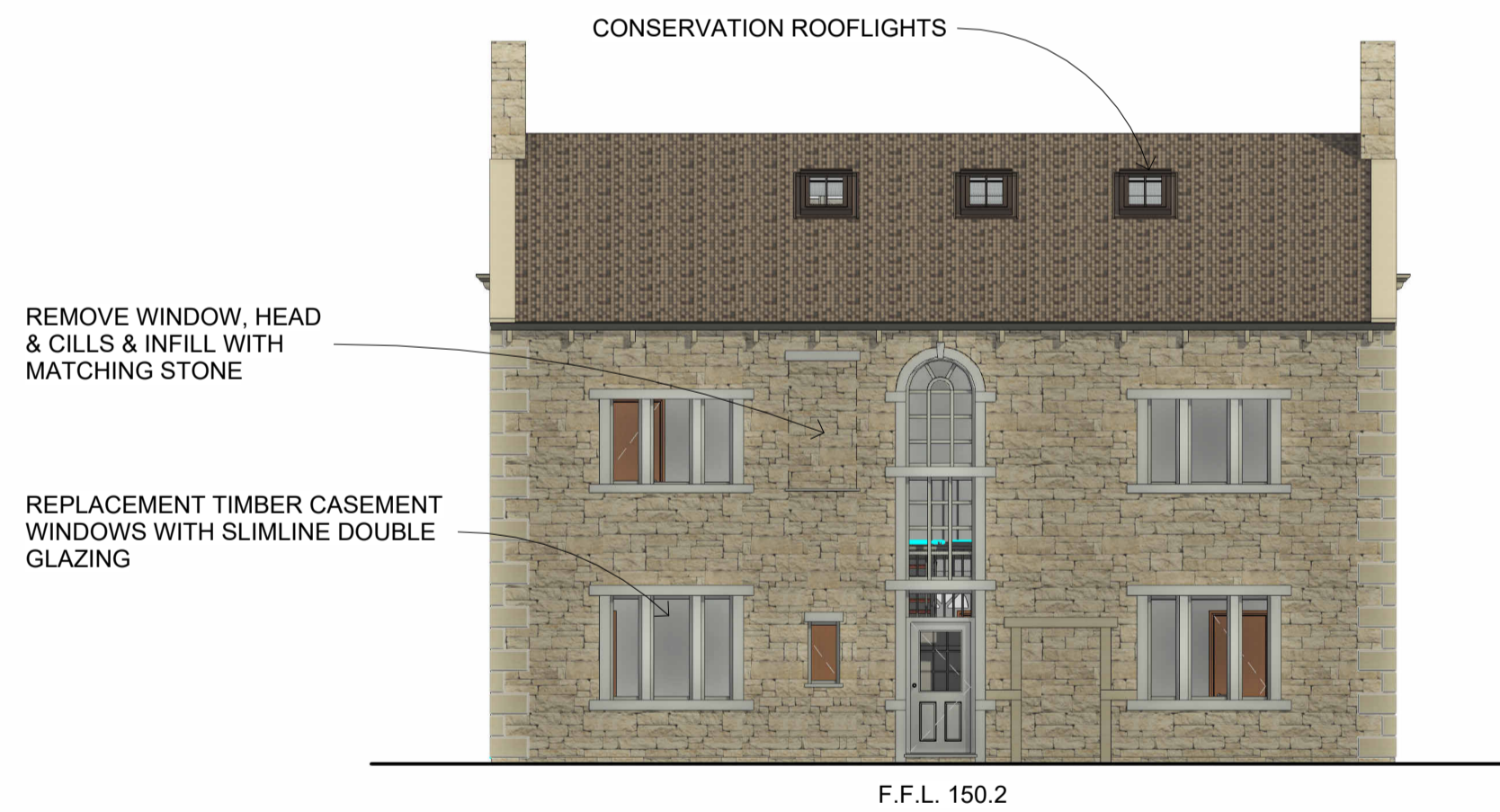
1 FRONT ELEVATION - SOUTH
1 : 100



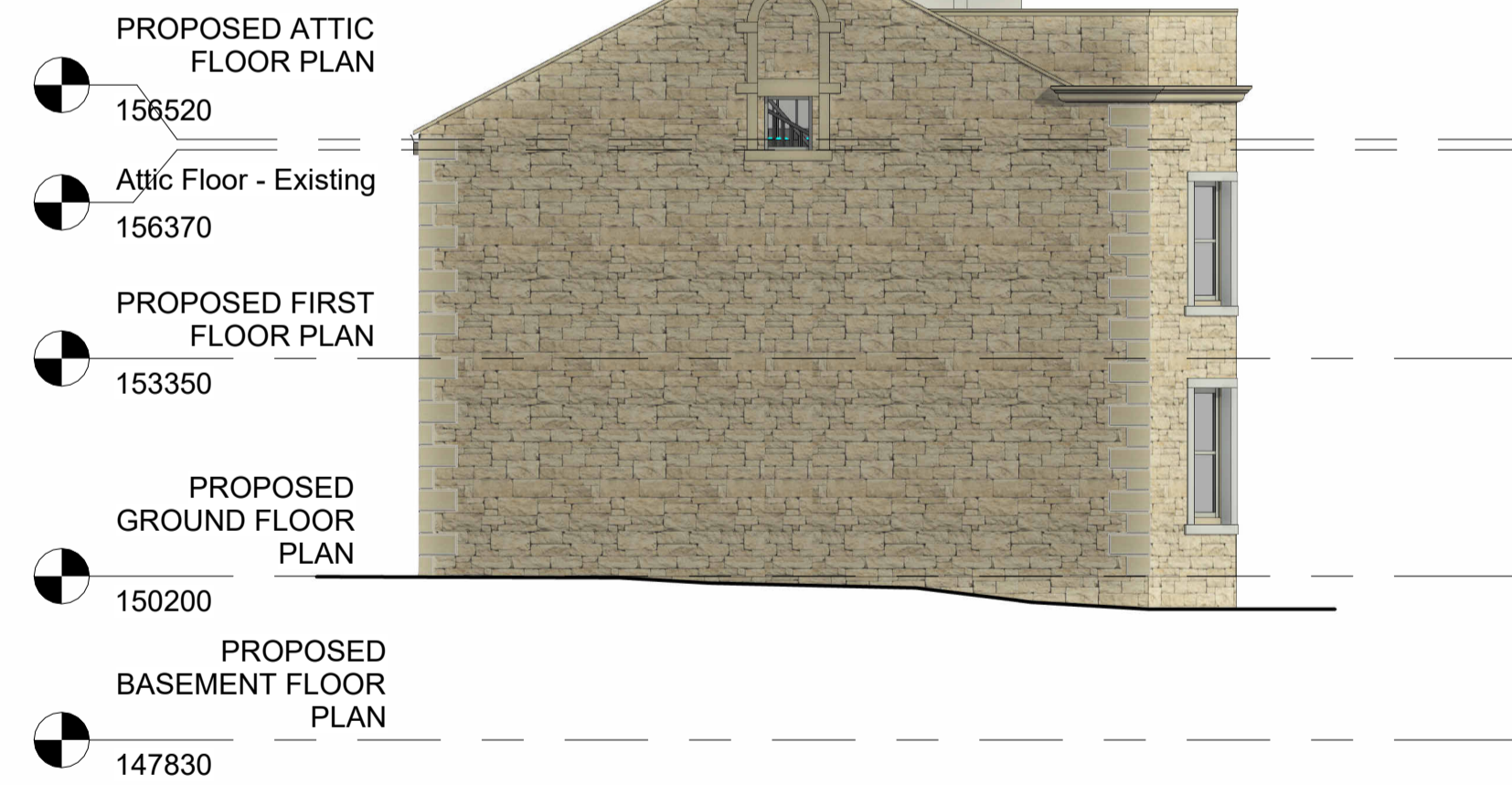
3 SIDE 1 ELEVATION - EAST
1 : 100



5 FRONT 3D VIEW



2 REAR ELEVATION - NORTH
1 : 100



4 SIDE 2 ELEVATION - WEST
1 : 100



6 REAR 3D VIEW

rev	description	drawn	auth	date
DO NOT SCALE OFF THIS DRAWING				

ACUMEN
 Designers & Architects

acumenarchitects.co.uk 01484 546 000
 Headrow House, Old Leeds Road, Huddersfield, Huddersfield HD1 1SG

Client
R CARR

Project
CLOUGH HOUSE, BIRSTALL

Project No 2848	Drawing No (100)09	Rev
---------------------------	------------------------------	-----

Description
PROPOSED HOUSE ELEVATIONS & 3D VIEWS

Scale 1 : 100 @ A1	Date Drawn MAR 24	Drawn By HB	Authorised By JC
------------------------------	-----------------------------	-----------------------	----------------------------

Purpose of Issue
 Planning Building Regs Tender Construction Comment Info